

Golfdom

MAY 2003 • VOLUME 59 • NO. 5

Taking Sides



60

Back to Life in the Bronx

A full-time superintendent and the First Tee are just what the doctor ordered for Mosholu GC.

By Larry Aylward

72

Special Report Grow-in Pains

Growing in a golf course can be a complicated, time-consuming and painstaking process. It's also a time for a superintendent to rise to the occasion.

By Anthony Pioppi

84

Real-Life Solutions Underscoring Overseeding

Experts shed light on various options, and strategies for turf throughout the golf course.

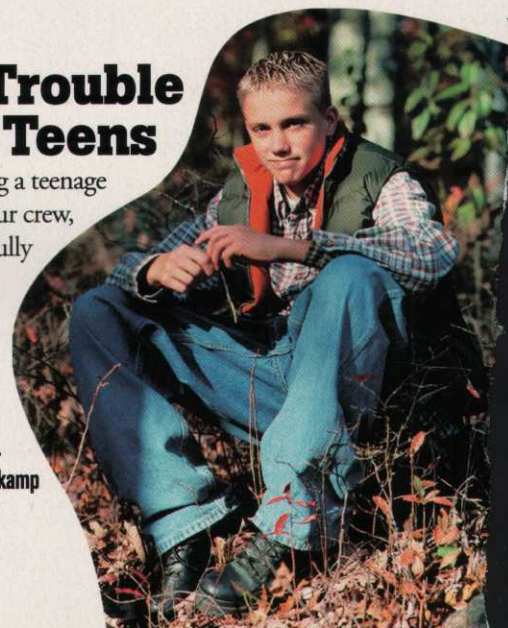
By Larry Aylward

90

The Trouble With Teens

Before adding a teenage worker to your crew, be sure you fully understand the many problems that can accompany him to work.

By Becky Mollenkamp





cover story

BY FRANK H. ANDORKA JR.

When superintendents cross over into management company positions, their peers often vilify them. But those who've made the transition say the criticism is unfair.

32

About the cover

Kim Traum, *Golfdom's* intrepid senior graphic designer, found this Eyewire image to illustrate in stark detail the line superintendents often feel that separates them from their management company peers.

columns

10 Flagstick

Get Used to It: They're Staying

26 Pin High

A Vital Speech Worth Revisiting

31 Shades of Green

You Work in a Great Profession

83 Designs On Golf

Why the Sport Is Out of Whack

102 Dave's World

Seeing Job Listings As They Really Are

120 Out of Bounds

Memorial Day

real-life solutions

98 A Big Drain

Southern superintendents are sold on Billy Bunkers.

departments

8 We've Got Mail

12 The Big Picture

14 Off the Fringe

28 Hole of the Month

113 Company Line

117 Leaders

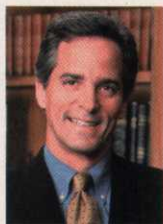
119 Classifieds

95

Hangin' Out With Mike Hughes

The National Golf Course Owners Association leader sat down with *Golfdom* to discuss why the number of golfers remains flat, what the uneven economy means for golf, and how the NGCOA and the GCSAA came together to merge their shows.

By Frank H. Andorka Jr.



News with a hook

14 Guarding Over Grubs

21 Cast of Characters

104

Performance, Not Perfection

Fertigation doesn't require a flawless irrigation system, but retrofitting an old system takes careful evaluation.

By Frank H. Andorka Jr.

We Hate It When That Happens

The headline on the lead story in April's *TurfGrass Trends* section (page 39) should have read, "Breeders Refine Tall Fescue's Disease Resistance."

Also, in a April story on new fungicides ("On the Horizon," page 74), the rates for BASF Professional Turf's Emerald for use on dollar spot should have read .13 to .18 ounces per 1,000 square feet.

43

TurfGrass Trends

This month, *Golfdom's* practical research digest for turf managers discusses the latest problems with dollar spot and more. Pages 43-59.