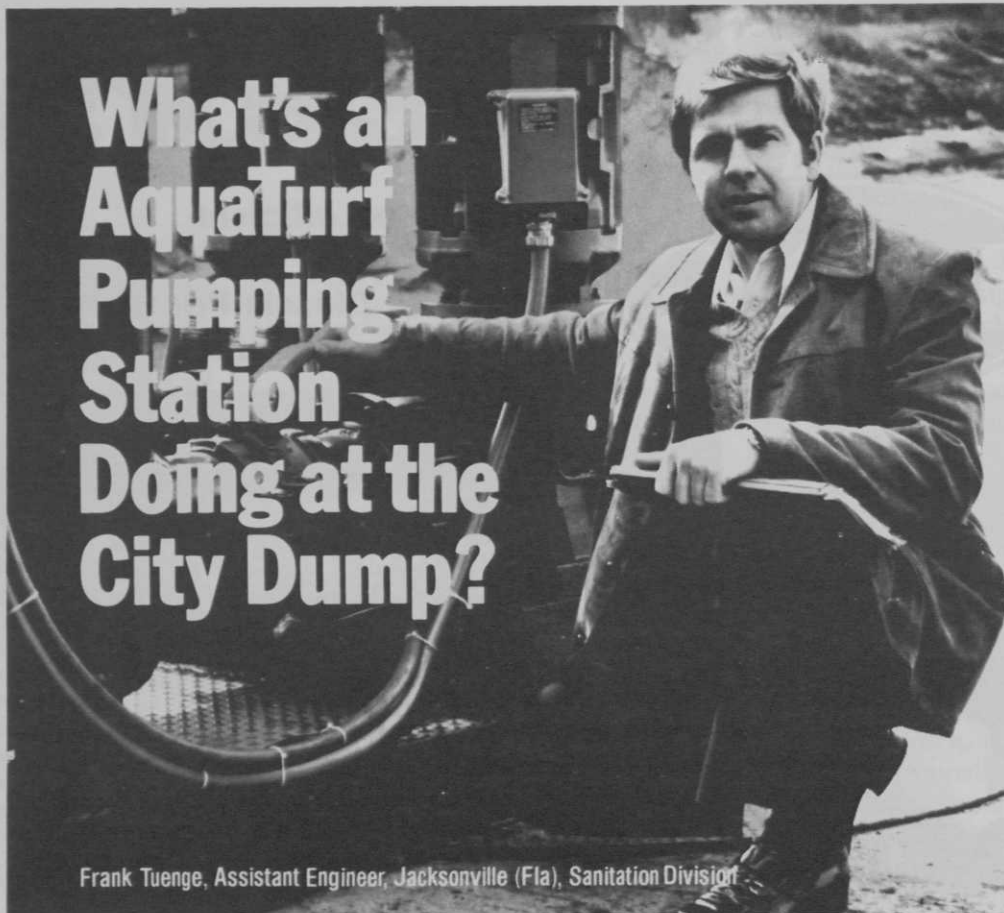


What's an AquaTurf Pumping Station Doing at the City Dump?



Frank Tuenge, Assistant Engineer, Jacksonville (Fla), Sanitation Division

In Jacksonville, Florida, it's providing a low cost, reliable method of lowering the ground water table at the city's East Sanitary Landfill.

"What we needed," explains Frank Tuenge, assistant engineer for the city's Sanitation Division, "was a pumping station that could operate around the clock without an attendant and could also handle the varying flow requirements of the landfill's drainage system."

The solution: An AquaTurf Atlantis 2000 pumping station. Automatically operated; electronically controlled; electrically powered. Two 25 HP pumps pre-programmed to "think for themselves," operating singly or in tandem depending on the need.

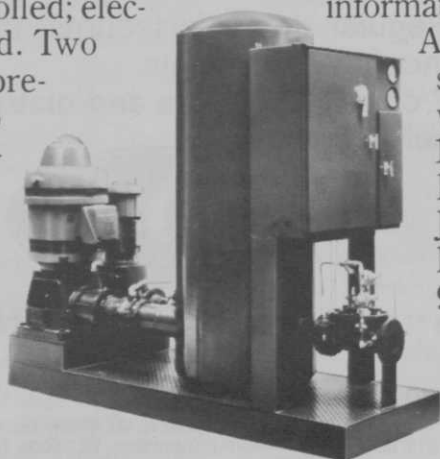
"The system is expected to

pay for itself in a little more than a year," Tuenge said. "We're also assured of keeping the ground water level within pollution control limits and the life of the landfill has been preserved for another nine years."

The anticipated savings to the city over that period of time: Nearly \$100,000.

What AquaTurf is doing in Jacksonville it can do wherever there's a dewatering problem—or a pumping problem of any kind. For the complete story on the Jacksonville installation and information about other

AquaTurf pumping systems, call or write AquaTurf, 11363 San Jose Boulevard, Jacksonville, Florida 32217. 904/268-6707.



AquaTurf

AQUATURF, 11363 SAN JOSE BOULEVARD, JACKSONVILLE, FLORIDA 32217, 904/268-6707
Circle 132 on free information card

Products

TINE HARROW

Fuerst F-l-e-x-i-b-l-e does many jobs

A Fuerst Tine Harrow will do a lot of jobs mechanically that now require doing by hand.

The Harrow will loosen thatch and stimulate growth of existing turf. It breaks up soil cores after aerification. It will prepare a seed bed while smoothing out rough uneven ground on newly constructed greens, bunkers and fairways, reducing hand raking to an absolute minimum. The Harrow will work in seed and fertilizer when overseeding and fertilizing. It can be used to rake roughs, wooded areas and traps. Many other uses have been developed by thinking superintendents.

Write 210 on free information card

FRONT-MOUNTED DIESEL

Bunton rotary features diesel engine

A new 30 horsepower diesel engine, front-mounted rotary mower has been introduced by Bunton. According to Bunton, the diesel, with its longer engine life, lower maintenance and about half the fuel consumption, will increase the ruggedness and high performance of the Bunton tractor.

Other engine options include: 19.6 hp air-cooled, twin cylinder diesel. Bunton also offers a choice of front-mounted mulching or side discharge rotary mower attachments in 61 and 71-inch cutting widths. A rotary broom and snow plow attachment are available also.

Write 202 on free information card

HF-15 HAS NEW DIESEL

Jacobsen mower features high torque

The 236 CID Perkins diesel engine available in the HF-15 generates 192 ft. lbs. of torque at only 1350 rpm, a gain of 20 percent over the previous diesel unit's 160 ft. lbs. of torque at 1600 rpm. Horsepower is also greater, rated at 78, compared to the original 65. Fuel consumption of the C.A.V.s fuel injected Perkins remains the same. Other new features of the HF-15 include a muffler and exhaust assembly that converts to either a vertical or horizontal position, a huskier gearbox drive with more rugged PTO shaft and U-joint, and a larger 12-inch diameter clutch.

Write 209 on free information card

UHF 2-WAY RADIO

Regency offers new hand-held series

The Micro-Com MCP-U Series of hand held, UHF, 2-way radios operate in the 450 to 470 MHz range on up to four channels that

may be switched as needed. The unit measures 6 inches by 1.8 inches by 2.45 inches wide and weighs 16 ounces.

A separate speaker and microphone have been incorporated in the unit for better receive ransmit quality. Audio output is rated at 4 watts.

Write 213 on free information card

MOTORLESS SPRAYER

Unit has ground-driven pump

The new WS-480 Grounds Wheelie manufacture is a liquid chemical spreader with a unique ground-driven pumping system. It can be used to apply liquid fertilizers, fungicides, herbicides and other chemicals. The twin wheel-pumps spray a fan of solution six feet wide at 1000 square feet per gallon. Coverage is relatively unchanged by the speed at which the sprayer is pumped. The faster it is pushed, the faster it pumps. The pumping system and the six-gallon container are made of corrosive resistant materials. The spray comes from two nozzles in the form of tiny droplets providing a steady uniform application which greatly reduces costly chemical drifting. The frame is fabricated of heavy gauge steel with shut-offs located on the handle grips.

Write 215 on free information card

VACUUMS, SWEEPERS

Parker offers complete line

Parker offers as standard equipment on all of its VAC-35 models the exclusive Spin-Pak air guide deflector which holds packs 19 percent more bulk litter into an 11 cubic foot collector bag, an anti-wrap ring which guards against material collecting behind the impeller and wrapping around the engine shaft, a 12-gauge steel chassis, and a spark free 5-blade aluminum impeller, plus many others. Parker also offers a complete line of turf sweepers.

Write 218 on free information card

HEAVY-DUTY TILT TRAILER

A new line tilts mechanically for loading

A new line of heavy-duty, low bed trailers that tilt to ground level for roll-aboard loading has been announced by Magline Inc. The Tiltster trailers are designed to reduce the cost of moving heavy, bulky equipment and other cargo by simplifying loading or unloading, and eliminating the need for special handling. A screwjack at the hitch end of the trailer mechanically lowers the rest of the trailer bed to loading position and then returns the trailer body to towing position when the load is aboard. Self-adjusting tailgate ramp provides a smooth, gradual incline for "roll-on" loading.

Four basic models are available, ranging in load capacity from 3,000 pounds to 7,000 pounds. Two bed sizes are offered: 70 inches wide by 10 feet long and 70 inches wide by 12 feet long.

Write 206 on free information card

SPECIALTY TRACTORS

Long Mfg. introduces a new series

Shown at left is the 310-C, a compact 28 PTO horsepower, two cylinder diesel tractor, one of a series of three new specialty tractors recently introduced by Long Mfg., a North Carolina based company. Two other models available include the 260-C with 24 PTO horsepower and the 360-C with 35 PTO horsepower. All three models are designed for turf work.

Write 201 on free information card

BOX SCRAPERS

Bush Hog scrapers fit 15 to 70 hp tractors

Designed to grade, level, and drag and backfill land and roadways, the new line of Bush Hog box scrapers feature a specially-designed curved moldboard that allows soil to roll within the box - preventing pile ups and rollovers for a smoother surface.

Write 208 on free information card

Continues on page 31



NO SYNTHETICALLY PRODUCED FERTILIZER CAN COMPARE WITH MILORGANITE...AMERICA'S NO. 1 TURFGRASS FERTILIZER SINCE 1926



For Information Write
MILORGANITE
 MILWAUKEE METROPOLITAN
 SEWERAGE DISTRICT
 735 North Water Street
 Milwaukee, Wisconsin 53202

Circle 115 on free information card

Products from page 29**GEAR-DRIVEN BLOWER***Features adjustable directional chute*

The Rotoblower was developed to meet the needs of professional turf manager. It allows the operator to blow leaves, thatch, debris or water in any direction - left, rear, its easy to rotate housing eliminates the need for wasteful deflection screens and requires less maintenance because it is gear driven and has no belts or chains to wear out. The blower requires a 30 hp tractor PTO and a category 1, 3-point hitch.

Write 217 on free information card

SOIL WATER MEASUREMENT*Offers line to measure matric potential*

Moisture Control Systems, based in Findlay, Ohio, has an extensive line of instrumentation which can measure soil water matric potential. Systems available include the 6005 for permanent data acquisition and the 6010 for portable data acquisition. Individual components of the systems are also available.

Write 212 on free information card

CONTAINER RINSE*Chemical rinser proves effective*

The E-Z Rinse is a new approach to the

cleaning of pesticide containers. The unit can be attached to any hose and allows emptying the container contents directly into the spray tank while mixing. The unit can be simply inserted into the bottom of 5-gallon-or-less containers. A punch or chisel must be used first on larger containers. Studies have shown that the E-Z Rinse can rinse a container in as few as 10 to 20 seconds, where it takes 2-1/2 to 3-1/2 minutes to triple rinse the old way.

Write 216 on free information card

WATER-COOLED DIESEL*Bolens has two new models*

Two new models, 19 and 24 horsepower, join the 15 and 17 horsepower water-cooled, diesel tractors Bolens introduced last year. All offer a choice of 2- or 4-wheel drive, multi-speed PTO, and 3-point hitch as standard equipment. Other standard features include an independent hydraulic system for raising and lowering Bolens' 37 approved attachments, a heavy-duty air cleaner, fuel line filter, fuel line shut-off, muffler deflector, thermostat, plus many more.

According to Bolens, these tractors offer Japanese quality and durability, combined with U.S. based distribution.

Write 203 on free information card

PARK AND PICNIC PAVILION*Game Time shelters offered in 16 sizes*

A Park and Picnic Pavilion, in sixteen

different sizes, has been added to the Game Time line of Octagonal and Linear wood buildings and shelters. Designed and built to last, the Milroy Park Pavilion will give years of service with a minimum of maintenance. The shelter is constructed entirely of fresh treated Southern Pine to inhibit decay.

The shelter features a partially assembled porch structure, and completely assembled rafters and gable ends. All roof boards are pre-cut to exact size and marked for ease of installation. A Milroy shelter can be constructed in a minimum amount of time.

The structure is available in a 22-foot or 29-foot width with lengths ranging from 27 feet to 116 feet.

Write 207 on free information card

HYDROSTATIC TRENCHER*Midmark claims first for its new unit*

The 14 horsepower Powermatic 140 can dig a full 36-inch deep trench. It features hydrostatic power systems to steer the unit, power the wheels and digging chain, and raise and lower the boom. The Powermatic has infinitely variable propulsion and digging chain speeds, enabling the operator to match the machine's speed to ground conditions. The Powermatic offers power steering and, as a result, the manufacturer has eliminated the customary handlebars. Fingertip controls are located on a panel directly in front of the operator.

Write 204 on free information card

HEAD OF ITS CLASS



Check with the turf managers who have used it, scan results from test plots all over the U.S. and you'll see why Derby has moved to the head of the turf-type perennial ryegrass class.

Numerous good fine-bladed ryegrasses are available today, but Derby is the one that has it all. It's a dark green beauty that mows beautifully, has excellent heat, drought and cold tolerance and produces a fine-textured turf.

In Northern regions, Derby is used to produce elite permanent turf, while it is considered a premier overseeding grass in the Southern U.S.

DERBY TURF-TYPE PERENNIAL RYEGRASS

- Germinates in less than a week under ideal conditions
- Thrives when cut to one inch or less on tees and fairways and as low as 3/16th inch on golf greens
- Produces a beautiful dense turf when cut to 1-1/2 inches
- Tolerates a wide range of soil types from sandy to heavy clay
- Persists in heavy, compacted, poorly drained areas where traffic is not intense

Derby is registered with the Plant Variety Protection Office PVPA No. 75 00009

Distributed By **INTERNATIONAL SEEDS, INC.** P.O. Box 168 • Halsey, Oregon 97348 • A/C 503 369-2251 • TWX 510/590-0765

Circle 125 on free information card