

Products

Beautifully quiet lockers

Republic Steel, Industrial Products Division, offers Mondrian lockers to make your locker room dramatically reflect the atmosphere of your club. The Mondrian locker has been designed with a recess handle to provide a true flush front which, coupled with low decibel quality, offers quiet distinctive elegance. Black or white frames accent the 19 standard decorator colors available for the doors. Mix or match individual door colors to make your locker room "a true work of art with the visual effect of a Mondrian painting."

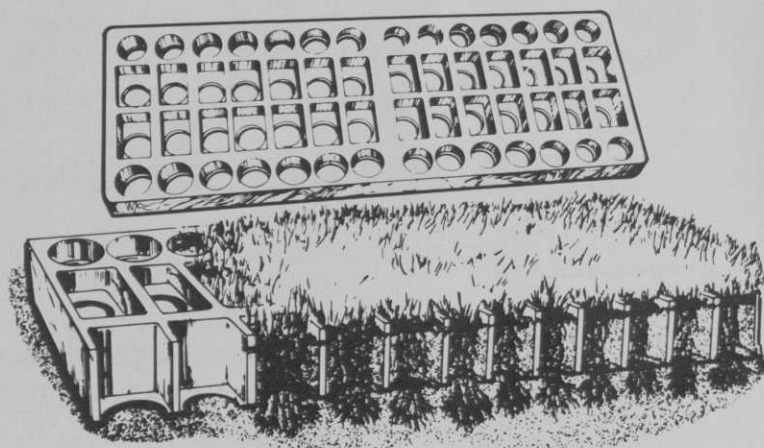
Circle 201 on free information card



Sod-growing blocks

Poly Forms, a division of Presto Products Inc., makes Sod-Saver landscaping blocks to provide wear-resistant sod in heavy-traffic areas on and around the golf course: golf car paths, tees, around drinking fountains, even parking lots. The blocks measure 12 by 36 inches and come in a normal 1 3/8-inch thickness and a 2 3/4-inch thickness for heavy-duty use. They provide a load-bearing, nonsinking base for turf, distribute weight to keep soil from compacting, allow air and water to reach tree roots. Easy to install, the blocks can be cut to fit with an ordinary saw.

Circle 202 on free information card



Compact, nonriding trencher

The new Ditch Witch model 1500, manufactured by The Charles Machine Works, Inc., is a two-wheel drive, nonriding compact trencher equipped with hydrostatic ground drive and a mechanically powered digging chain. Hydrostatic drive provides quick, precise adjustment of mobile or trenching speeds to fit conditions. Engine options ranging from 9 to 13 horsepower enable you to pick the powerplant that will best fit your needs. Equipped with a wheel clutch, the model 1500 will dig to depths of 5 feet and widths of 8 inches, depending upon boom and chain selection. An optional wide pivot is available for digging widths to 12 inches. If more stability is needed for digging on slopes or in other difficult areas, the wheels can be reversed to obtain an additional 10 inches of machine width and wider tracking. The machine's controls are big and easy to reach; ground drive direction and speed are controlled by one lever.

Circle 203 on free information card



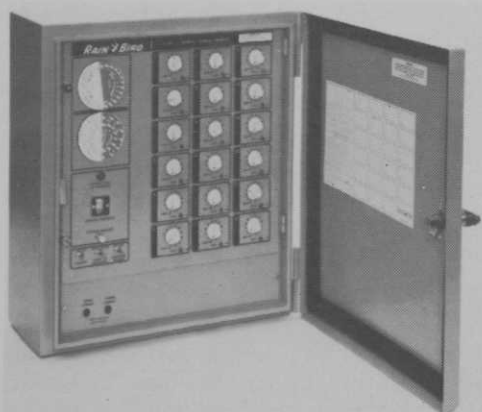
Multipurpose off-road truck

HydraHaul, product of OME Inc., has an aluminum dump bed that operates hydraulically, controlled from the driver's seat; fenders, seat, cowl, and footboards are also nonrusting aluminum. The electrically started, 16-horsepower Briggs & Stratton engine not only moves the HydraHaul at 10 miles per hour, it also powers a 2,400-watt, 110-volt a.c. generator for operating trimmers, pumps, and other tools on the course. The transmission is hydrostatic-type.

Circle 204 on free information card



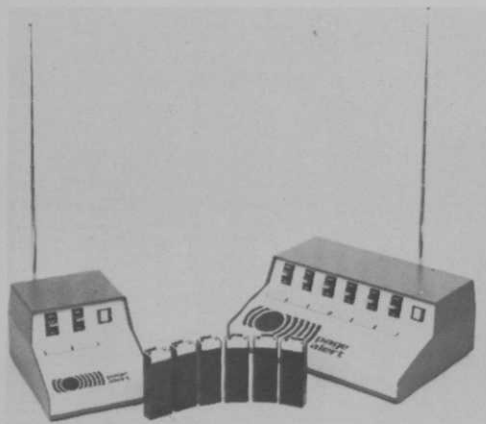
Products



Automatic irrigation control

Three models make up the B series of automatic controllers introduced this year by Rain Bird: models RC-12B, RC-18B, and RC-23B manage 12, 18, and 23 stations respectively. All work in conjunction with optional Dual Program or Long Timing modules and feature an Instant Repeat cycle. Other key features: 14-day calendar, incremental timing from 2 to 60 minutes on all stations, and a rain shutdown switch. A moisture sensor switch can override the controller if desired.

Circle 218 on free information card



Personnel pager

The 600 series radio paging system was designed by Page Alert Systems, Inc. to meet the needs of users such as golf courses where a range of one mile is required. Receivers are small, weigh just 4 1/4 ounces, and can be worn in a shirt pocket or on a belt. Paging is tone only; receivers are selectively called, so the pro, superintendent, and other personnel can be paged individually.

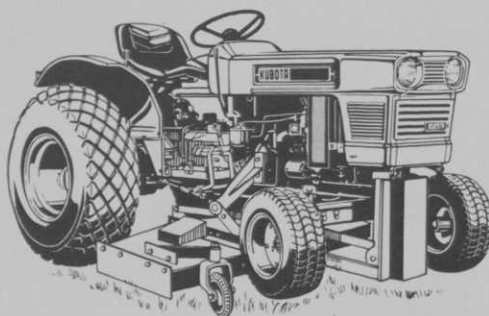
Circle 212 on free information card



Stump grinder

A one-man machine called Little David will reduce a stump to an easily removed pile of fine chips in minutes. While able to cut a foot below ground, it has adjustable wheels to enable removal of stumps 2 feet high. Its 14-inch cutting wheel has 12 carbide teeth and is powered by a 16-horsepower engine. From Promark Products West, Inc.

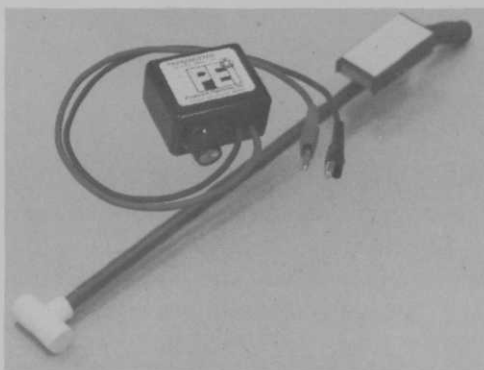
Circle 210 on free information card



Diesel tractor

A 25-horsepower three-cylinder diesel engine powers the Kubota L245 tractor, which has many big-tractor features: eight forward speeds and two reverse, front and rear PTO shafts, category I three-point hitch, hydraulic lift with position control. Shown here with optional mid-mount mower.

Circle 209 on free information card



Pipe detector

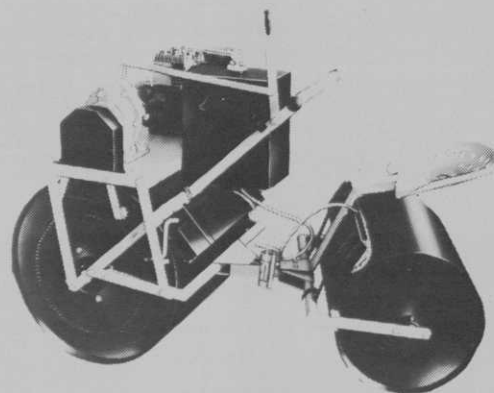
Locate underground water pipes, conduit, sewer pipes, and PVC water pipes with water in them by using the Tracker, a 33-inch device which operates on a 9-volt battery. The tracking unit weighs less than 3 pounds and

works with a 1- by 1- by 2-inch transmitter. Progressive Electronics Inc. sells the Tracker. Circle 215 on free information card

Dutch elm fungicide

Elmpo, an injectable systemic fungicide containing Arbotect, is available from Hopkins Agricultural Chemical Co. to combat Dutch elm disease. Elmpo is mixed 1:1 with water, then injected into the vascular system of the tree by gravity or low-pressure injection equipment. Apply it once per season.

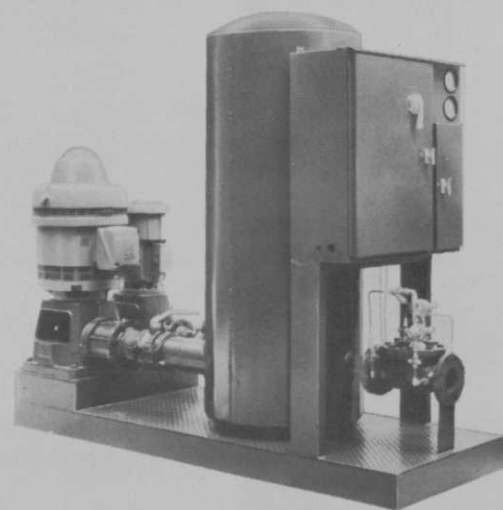
Circle 206 on free information card



Heavy roller

Brutus is the name of a 1/2-ton riding power roller made by Northeast Industries, Inc. for rolling turf, hot-tar surfacing, pavement patching, and compacting confined areas. Although low-priced, Brutus has a semiautomatic forward/reverse transmission and a center-pivot steering mechanism.

Circle 208 on free information card



Pumping station

A pumping station with solid-state controls to take the guesswork out of time, flow, and pressure measurements has been developed by AquaTurf. It is available in capacities ranging from 250 to 5,000 gallons per minute.

Circle 207 on free information card