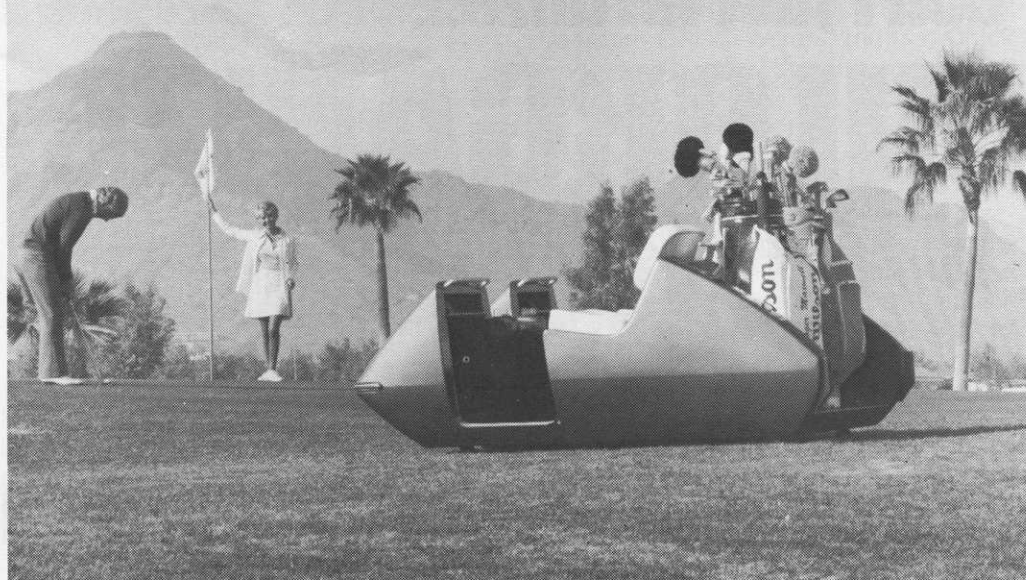


Products



New golf car has no wheels to mar your course's turf

A revolutionary new method of transporting golfers without marring the course is available now from TransGlide, a subsidiary of Dahlberg Industries. Called GolfGlide, this transportation system replaces traditional golf cars and paved paths with electrically powered "gliders" which ride down the middle of the fairways on a concealed underground track. Golfers control the gliders manually by pushbutton when in their vehicle and by remote control when out making a shot. An "automatic tee position" feature moves the glider on command from the green to the next tee while the golfers putt.

"With a GolfGlide system," Robert Trent Jones said at its introduction, "ugly golf car paths are eliminated. And damage to grass from off-path travel is no longer a worry to the designer or the owner." The GolfGlide track has a 2-inch opening which is covered to keep out debris. The cover opens in front of the glider and closes behind it as it moves down the fairway.

"The gliders are also impossible to tip over," Jones added, "which lowers liability risks associated with the operation of golf cars." The system automatically limits glider speed to 15 miles per hour. And in addition to a reduction of risk and of course maintenance costs, the gliders can offer other savings: they operate without tires, transmissions, driveshafts, differentials, shock absorbers, or steering mechanisms. Special equipment is needed to take a glider off the track, making it nearly impossible to steal.

Along with its remote control capability, GolfGlide also can be equipped with a display board in the pro shop or starter's hut to visibly point out slower-playing parties.

Inside the glider, golfers will find a yardage meter that indicates distance to the green from any point on the fairway. You can add such items as a heater or telephone.

Circle 201 on free information card

Golf clubs for '77 have very low center of gravity

The Executive line of men's and ladies' clubs from Spalding combines "the widest sweet spot possible" with an extremely low center of gravity to provide great playability. The wide sweet spot helps on off-center hits, while the lower weight distribution makes it easier to get the ball up and imparts more backspin. Other Executive features include light total weights, "Jet Step" shafts, confidence-building low looks on the long irons and the woods, a unique high toe to expand the wood hitting area, and full sole plates for low weight and wood sole protection. The wide Sweep Sole puts more club behind the ball, even on fat hits.

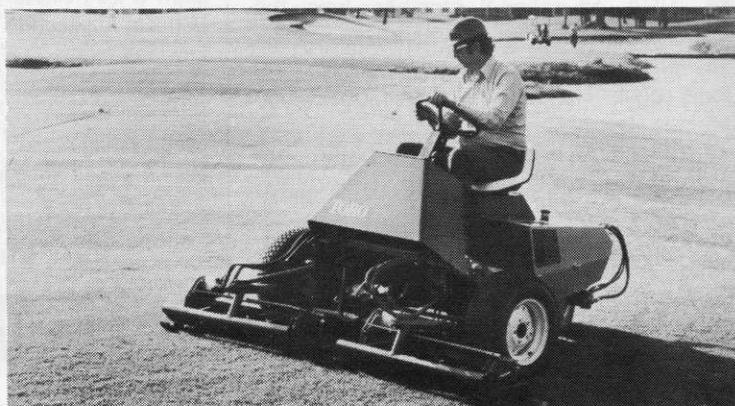
Circle 202 on free information card

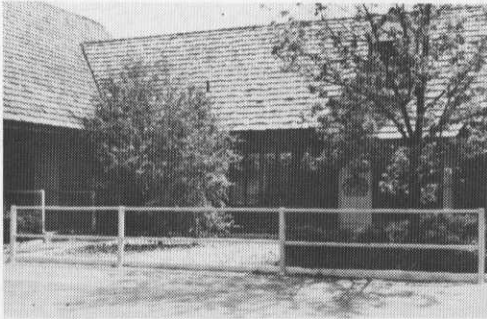


Triplex reel mower has all hydraulic power

The Toro Co. designed the first all-hydraulic triplex reel mower, the Turf Pro 84, with three characteristics in mind: low maintenance, high reliability, and outstanding performance. The mower's hydraulic system powers the three seven-blade reels, all three drive wheels, and the lift mechanism for the cutting units. Each of the reels and wheels has its own hydraulic motor, eliminating the drive chains and belts that often need constant adjustment, repair, or replacement. The Turf Pro cuts an 84-inch swath and mows up to 3.8 acres an hour. The reels have independent suspension to permit them to follow the contour of the ground, and reel speed adjusts independently of ground speed so the operator can select the correct clip for all types of grasses.

Circle 203 on free information card





Railings guide traffic

Equipto Decorator Style safety railing systems can be used outdoors to protect landscaped areas and define walkways to guide people and vehicles. Installation is simple: all parts are prefabricated, precision-formed sheet metal with smooth rounded edges, cut to proper size for quick assembly.

Circle 204 on free information card



Golf car trailer

Holsclaw Bros., Inc. has improved its model B-48 golf car trailer by making the rear ramp longer, to better accommodate some of the new four-wheel golf cars. The trailer is offered for three-wheel cars as well. Both models have an 1,100-pound carrying capacity and come complete with all necessary lighting and tie-downs.

Circle 205 on free information card

Turfgrass paving

Grass-Cel paving from Turfgrass Products Corp. was developed to help eliminate soil compaction and turfgrass wear on intensive-use areas such as golf car paths, footpaths, and around shelters and tees. It can also be installed on stream banks or other inclines where erosion is a problem.

Grass-Cel is made of a tough, resilient, green synthetic material in a honeycomb pattern that resembles small six-sided flower pots joined together. The walls of the cells support the weight and wear of traffic while protecting the soil and grass plants inside them.

Circle 206 on free information card

For a *tough* lie, you need a *mean* wedge that leads a *double* life.

ATTILA

is a DUAL wedge and a little meaner than all the rest. Handles both pitch and sand lies. Features a variable-pitch sole—the angle changes as the face is opened or closed. The very thin blade gives “feel” to every shot. Weight concentration is below the ball center and sole drag in the club center. Ball gets up fast and stops fast. From fairway, rough or bunker, your best wedge shot is an Attila shot. Mean! Ask your pro or contact



Crown Golf, Inc.

1048 East Burgrove Street, Carson, CA 90746
Pat Simmons International Canada, Ltd.
3291 Nobelton Street, Mississauga, Ontario

Different in a way that makes a difference!



Circle 128 on free information card

BUNTON

The Bunton Breed



Introducing the 52 inch cut Bunton Rear Discharge mower. A new design deck allows close trimming on both sides, helps prevent windrows and gives you a clean manicured cut (not that just-cut look). The new variable speed drive gives a wider range of ground speeds. The 3 gallon fuel tank and Hi-Way front caster wheels are standard equipment. This new mower is designed for fine lawns and rough areas. The finger tip control gives the same easy handling and hillside stability and maneuverability as the other Bunton Self-Propelled models. Also available is a new 36 inch rear discharge mower.

BUNTON CO. 4303 Poplar Level Rd. Louisville, Kentucky 40213 U.S.A.

Phone 502 / 459-3810 Telex 204-340

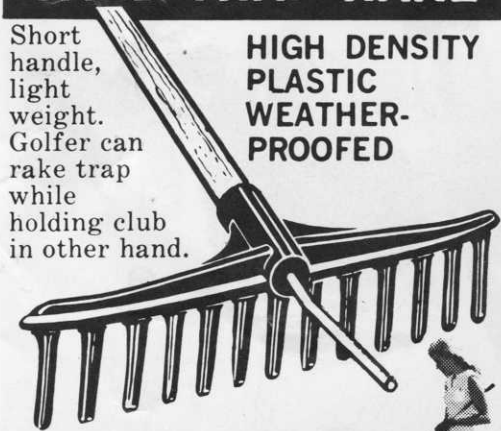
Circle 110 on free information card

RAKE OUT YOUR SANDTRAP WORRIES!

RAKE EZZE SAND TRAP RAKE

Short handle, light weight. Golfer can rake trap while holding club in other hand.

HIGH DENSITY PLASTIC WEATHER-PROOFED



Sturdy, attractive, won't rust, yet low in cost. Rake-Ezee stands erect on point, reminds golfer to rake trap. Fully guaranteed with tough plastic head. See your distributor, or write:

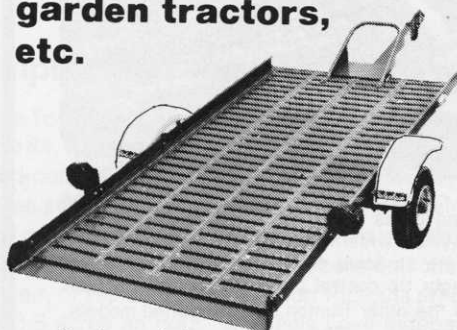
NORTH CENTRAL
Plastics INCORPORATED
ELLENDALE, MINNESOTA 56026

Circle 127 on free information card

not only will this all-purpose trailer carry your golf cart

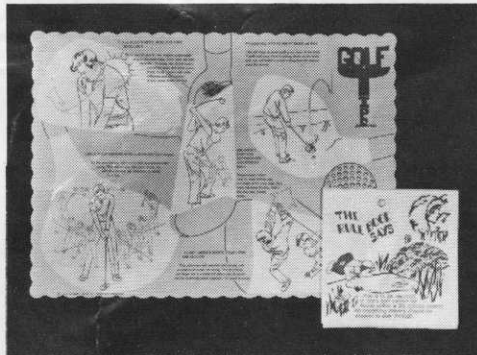


but it also will handle snowmobiles, garden tractors, etc.



write for catalog
HOLSCLAW BROS., INC.
414 N. Willow Road
Evansville, Ind. 47711

Circle 118 on free information card



Golf-theme paper goods

A place mat and beverage napkin from Fort Howard Paper are ideal for use in golf club foodservice operations. The place mat features five good golfing tips, such as "check your errors with a slow-motion swing," illustrated with line drawings. The beverage napkin carries pictorial and comical views of the rules of golf.

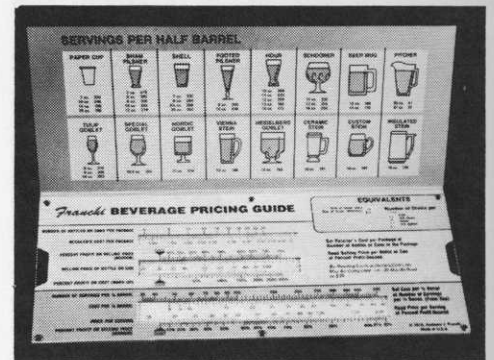
Circle 208 on free information card

Golf club carpet

Trophy is the name of a deep, 72-ounce cut-pile velvet carpeting designed especially for use in clubhouses. Available from Colonnade Carpets, a division of Collins & Aikman, the carpet has a dense construction made to with-

stand the heavy wear of spiked golf shoes; it carries a 5-year guarantee for installations in golf clubs. Cement it directly to all types of flooring above or below grade. Trophy comes in 15 solid and heather colors.

Circle 210 on free information card



Price drinks for profit

No need to guess — by using a beverage pricing guide from Franchi Calculator Co., you can realize maximum profit potential in your club beverage operation. The hand-powered calculator quickly determines percentage of markup, costs, selling price, and gross sales on liquor, wine, beer, and all soft drinks. It can save hours of figuring costs and eliminate errors.

Circle 209 on free information card

a true story...

How to turn cart rental problems into profit opportunities



When you operate on a short season, every dollar has to produce maximum profit. Here's how a Rhode Island club solved this problem: After studying the costs of operating on a 2½ month season, Sakonnet Golf Club decided to supplement its fleet of six riding cars with 20 Kangaroo Katty® Course-Master electric-powered walking carts.

These carts have made money since the day they arrived. Sakonnet's Course-Master carts average an 18-hole round 1½ times per day. Sakonnet's golfers like the Course-Master's performance and easy handling.

And Sakonnet's reaction? They plan to acquire additional Course-Masters, conserving capital with our lease-purchase plan.

Pros everywhere are discovering that the Kangaroo Katty® Course-Master is a real money-making problem solver. Write or phone today for the whole profit story.

KANGAROO KATTY

Gan-Ed, Inc. Box 1260 F
Tryon, North Carolina 28782
Phone (704) 894-8241

Manufactured under U.S. Patent No. 3,815,699

Circle 112 on free information card