



Products



Gas-powered trimmer cuts weeds and rough

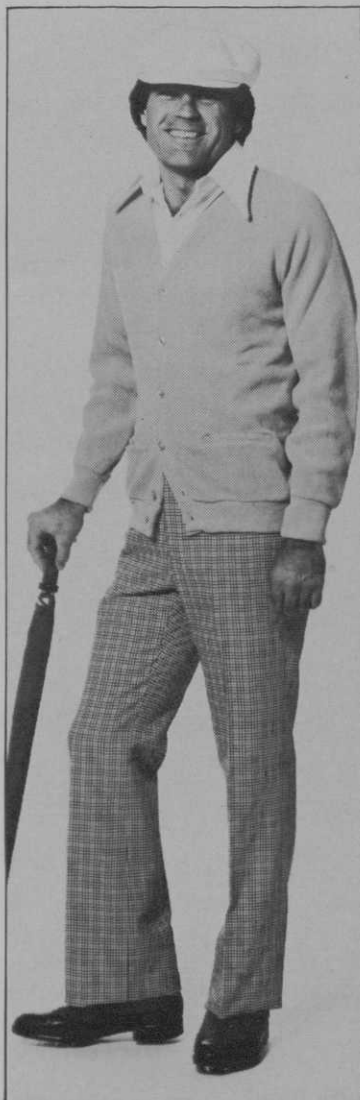
The original trimmer/edger from Weed Eater, Inc., is the gasoline-powered model 657, designed for heavy-duty use. Its "blade" is nylon monofilament cord which not only is safer than a metal blade, but also reaches into places a conventional trimmer can't touch. Great for trimming under fences, around trees, and along the edge of sand traps. Use it for sweeping and edging cart paths and walks, too. Power from the 85-horsepower Tecumseh engine is controlled from the adjustable guide handles.

Circle 201 on free information card

Outfit your golfers in complete ensembles

One of the secrets of successful pro shop sales and higher profits is the ability to merchandise a complete line of golfwear and, therefore, to make multiple-item sales. AMF Ben Hogan Co. offers coordinated ensembles in a wide selection of styles and colors to outfit your pro shop customers. The collection comprises comfortable men's and women's waterproof golf shoes; functional men's headwear; shirts in solids, stripes, and patterns; solid, fancy, and checked men's slacks; and a variety of colorful cardigan and pullover sweaters — it even includes umbrellas. Shown at right are the classic Hogan cap, the Golfer cardigan sweater, Centurion slacks, and Gator n' Suede golf shoes.

Circle 203 on free information card



Self-contained kit makes soil analyses

A chemistry background is not needed to perform your own soil tests using a self-contained Soil Test Laboratory developed by Hach Chemical Co. The kit contains simple step-by-step instructions, and the chemical reagents used in the tests are packaged in safe, unit-dose powder pillows. The kit can test for ammonia nitrogen, nitrate nitrogen, phosphorus, potassium, pH and lime requirements — so it's useful for determining fertilizer N-P-K ratios and whether, or when, to put down lime. All chemicals (enough to perform each test 50 times) and necessary apparatus are packed in a durable, black plastic carrying case which weighs just 15 pounds. The kit is battery-powered, and a battery eliminator is also provided for a.c. operation.

Circle 202 on free information card

Coffee dispenser offers economy + convenience

Club foodservice operators can fight rising coffee prices by using a ground coffee dispenser which provides the economy of buying bulk coffee with the convenience of using portion packs. Product of Cory Food Services, Inc., the dispenser holds 6 pounds of ground coffee and dispenses preset portions between ½ and 3½ ounces into any size brewing cartridge — without mess or waste. A lock nut is available to keep unauthorized personnel from changing portion sizes.

Circle 204 on free information card