

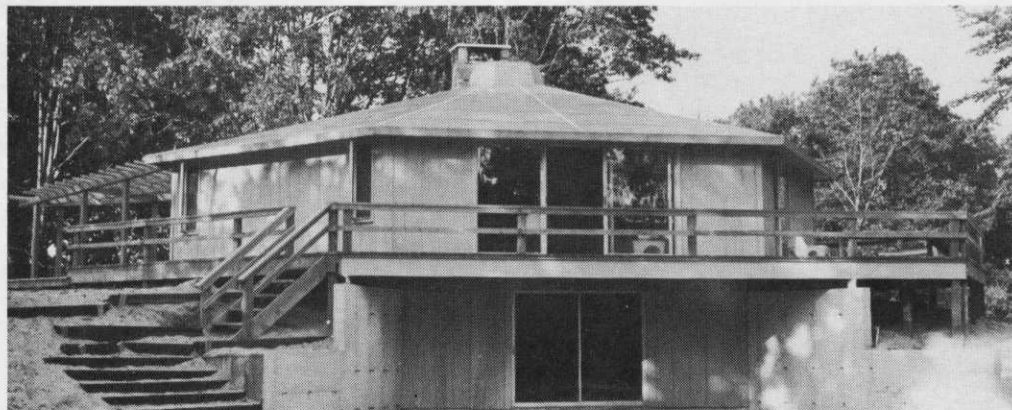
Products



Treborn now makes high-quality golf shoes

One of the finest names in tennis shoes is now the newest name in golf shoes. The Swedish company, Treton Inc., has introduced a distinctive line of men's and women's golf shoes for sale through pro shops in the U.S. The line comprises wingtip and moccasin styles in all standard sizes and a variety of color combinations. Designed and crafted for quality-conscious golfers, the shoes have water-repellent full-grain leather uppers and lightweight rubber cushion soles. A Treborn foam insole gives added comfort. Long-wearing tungsten carbide spikes are molded into the rubber sole and will not work loose. All told, these features should add up to the same exceptional comfort and performance that characterizes the Treborn tennis shoe.

Circle 201 on free information card



Buildings adapt to variety of club uses

Port Six buildings from W. H. Porter, Inc. offer three points of interest to golf club operators:

1) They require less energy than normal to heat or cool because the walls are formed of sandwich panels with a rigid foam insulation core. Bonded to each side of the core are gypsum board, embossed aluminum, rough-sawn plywood siding, or similar materials providing a finished weatherproof exterior surface and an attractively finished interior.

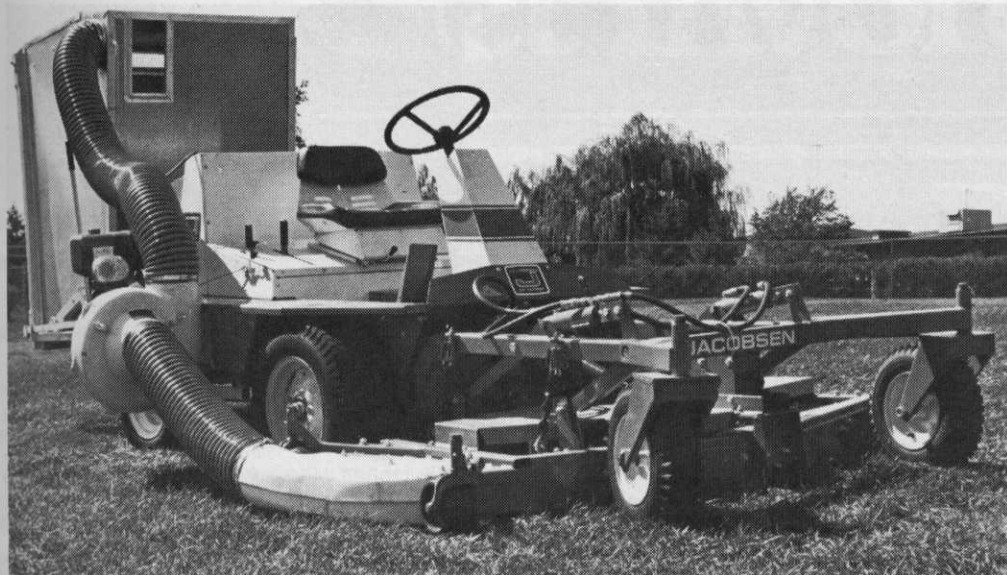
2) The panelized Port-R-Span building system is so simple that two of your own men can erect the entire structure in just a few days. The tubular steel frame simply bolts together. Frame parts are pre-drilled, welded, and engineered to go together quickly. The heaviest single part weighs just 146 pounds.

Circle 202 on free information card

The entire frame can be carried in one pickup-truck load. Wall and roof panels will take two or four more loads, depending on panel thickness.

3) The hexagonal shape of Port Six allows for full use of interior space with no inside supports. The interior is open and spacious; it is enhanced and dramatized by the vaulted cathedral ceiling leading to a unique center skylight which provides plenty of light on most days.

These features make Port Six adaptable to a variety of applications: a pro shop, clubhouse, restaurant, office, or 19th hole. Two models are available: inside wall lengths of 18 or 22 feet, giving a maximum inside dimension of 36 or 44 feet.

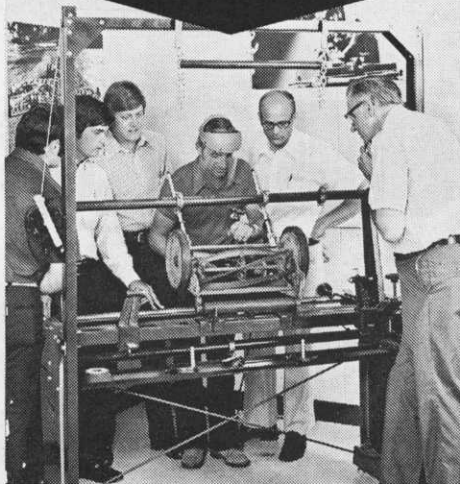


Turf vacuum attachment has its own power source

Jacobsen Manufacturing Co. offers a turf vacuum attachment for its Out Front Commercial riding rotary mower. The vacuum has a 1-cubic-yard hopper that attaches to the back of the mower and a 7-horsepower Kohler engine that attaches to the right side of the machine. Vacuum power is ample for picking up pine needles and other small debris, as well as grass clippings and leaves. The operator can dump the hopper without leaving his seat. Noncorrosive materials are used on the vacuum attachment wherever moisture might be a problem. The Out Front Commercial mows and vacuums a 72-inch swath; it has a front cutter deck and rear-wheel steering for close trimming around obstacles.

Circle 203 on free information card

THE COMPLETE LAWN MOWER Sharpening Team



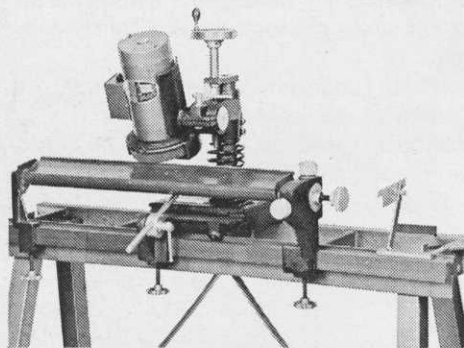
Foley Maintains High Standards In Production and Service for YOU

Satisfied customers are important to Foley. That's why each piece of lawn mower sharpening equipment is designed, engineered and quality-built at Foley...providing professional performance everytime.

Thru your local turf distributor, Foley provides you with proper maintenance procedures...safety and operator training...up-dated sharpening techniques. We'll help run special seminars and service shows too!

Foley Lawn Mower Grinder (shown above)

Professionally sharpen reel and bed knives without dismantling mowers... Accommodates blades up to 36" long.



Foley's Bed Knife Grinder

Foley's Bed Knife Grinder provides exact angles for precision sharpening. Grinds bed knives and straight knives up to 36" long.

Precision Lapping Machine

Precision Lapping Machine adds flexibility to any shop. Set-up is easy anywhere. Perfectly matches bed knife edge to reel blades.

For more information...see your turf distributor or contact Foley directly

Foley MANUFACTURING CO.,
231-7R Ringer Building,
Minneapolis, Minn. 55418

Circle 112 on free information card

Products



Measure clubs precisely

The Golf Club Gauge, available from Ralph Maltby Enterprises, enables you to measure woods and irons the way manufacturers do — but in your own shop. With it you can order a perfect duplicate of any club without sending it to the factory, build a perfect duplicate yourself, fit clubs more scientifically. The gauge comes assembled and adjusted; it measures loft, lie, face progression and offset, face angle, sole bounce and sole inversion, and all length, height, and width dimensions.

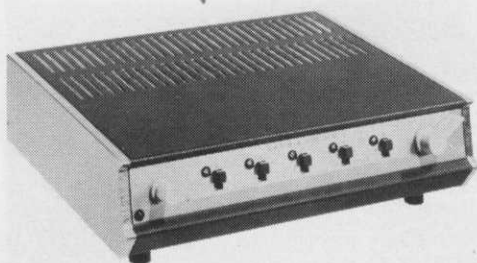
Circle 209 on free information card



New golf bags

Kent Sporting Goods Co. has redesigned its golf bag line for 1977 to include 19 new models. Top models offer Fat Cat slings, cylindrical polyethylene foundation, and roomy ball and storage pockets. A complete Sunday line has been added, plus two carryalls. Each model comes in a variety of quick-selling, attractive colors.

Circle 214 on free information card



Master intercom

Model K-ML-5WA from Talk-A-Phone Co. is a master intercom for use with up to five indoor or outdoor substations. It has the facility to call,

listen, and talk with the subs individually, selectively, or simultaneously as well as to receive calls. Annunciator lights identify the caller.

Circle 215 on free information card



Golf accessories

A national supplier of sports equipment, Wa-Mac Inc., has added a golf products line. Included are vinyl and knitted head covers, golf gloves, towels, visors, pom-pom socks, and specially packaged and priced golf balls for quick, volume sales.

Circle 216 on free information card



Water-saving urinals

Water-Guard urinals from Kohler Co. will flush with less than a gallon of water when installed with properly adjusted, specified flush valves. The Freshman model pictured offers siphon-jet flushing and spacesaving size — it's just 11¼ inches from wall to the front of the flare, 16¼ inches wide, and 24 high. This and three available washout models use 50 to 75 percent less water than conventional urinals.

Circle 213 on free information card



The Bunton Breed



Introducing the 36 inch cut Bunton Rear Discharge mower. A new design deck allows close trimming on both sides, helps prevent windrows and gives you a clean manicured cut (not that just-cut look). The new variable speed drive gives a wider range of ground speeds. The 3 gallon fuel tank and Hi-Way front caster wheels are standard equipment. This new mower is designed for fine lawns and rough areas. The finger tip control gives the same easy handling and hillside stability and maneuverability as the other Bunton Self-Propelled models. Also available is a new 52 inch rear discharge mower.

BUNTON CO. 4303 Poplar Level Rd. Louisville, Kentucky 40213 U.S.A.
Phone 502 / 459-3810 Telex 204-340

Circle 104 on free information card

Golf car parts

A leading manufacturer of replacement pistons for motorcycles now offers replacement pistons for Harley-Davidson golf cars. Wiseco Piston, Inc. makes them in sizes from stock to .060 overbore.

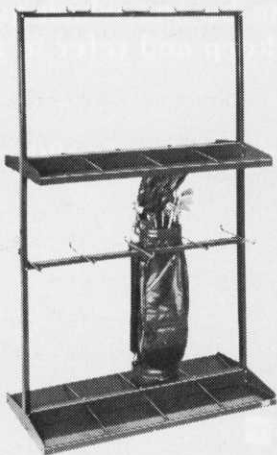
Circle 207 on free information card



Sculptured Irons

The RB-71 is one of six sculptured irons in the Northwestern Golf Co. line. It features a cavity back, stainless steel ferrules, All-weather composition grips, and Microlite LTS low-torque fluted steel shafts. The woods have dark walnut laminated heads with a wide-angle, prototype face insert with toe and heel brass-weighted insets.

Circle 208 on free information card



INCREASE EARNINGS, SERVICE & SPACE
 Remodel your present storage space, update with
NEW Stafford VERTICAL BAG RACKS

- Wear and tear of golf bags is completely eliminated
- Damp bags dry faster — no mildew
- Faster, easier storage
- Provides a neat appearance
- Easy to install and add more as needed

Your members will like the extra convenience and care. Your pro shop profits from 40% more space these racks make available. Double unit shown holds 16 bags, size 2' x 4' x 6'-6" high, gives 12" x 12" space for bags. Single unit holds 8, size 1' x 4' x 6'-6" high. Sturdy steel. Bags set solid on tapered shelves. Send us your floor measurements, we will plan a layout and quote you — no obligation. U.S. and Canadian patents. Send for folder.

The A.G. STAFFORD Co. 2000 Allen Ave., S. E.
 Box 8877, Canton, O. 44711
 Phone 216/453-8431

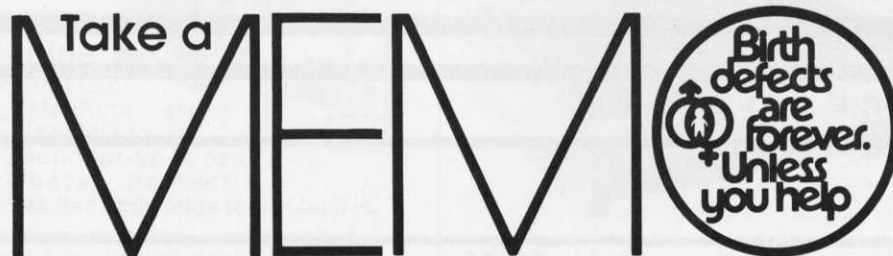
Circle 130 on free information card



Men's golf shirts

PGA Victor's 1977 line of men's shirts includes (from left to right above) the Checkmate, of Arnel Triacetate and polyester; the PGA Solid, of cotton Durene with a chest pocket and monochromatic PGA embroidery on the left sleeve; and the Pinball, also of Arnel triacetate and polyester. All have long tails, fused collars, and PGA-embossed square buttons; all are sold exclusively through pro shops.

Circle 211 on free information card



TO PROTECT THE UNBORN AND THE NEWBORN

March of Dimes

THIS SPACE CONTRIBUTED BY THE PUBLISHER



Restaurant ham

Armour Star Food Service Special hams feature excellent uniformity and extra-lean trim for operator economy and assured customer satisfaction. Armour Food Co. fully cooks the hams for easy preparation and serving, then vacuum-packs them. They come in 14- to 18-pound, 18- to 22-inch sizes. Clubs can serve the ham for breakfast, lunch, dinner, or snacks.

Circle 204 on free information card



Redwood benches

A line of heavy-duty park benches is made by Leisure Craft, Inc. in 6-foot, 8-foot, and custom lengths. All have steel channel assemblies which hold each redwood 2x4 individually, thereby enabling interchangeability of the boards. A variety of portable and secured bases is offered. All steel parts are coated with black rust-resistant paint.

Circle 206 on free information card

Battery chargers

Models 120, 240, and 360 are the latest in the Motor Appliance Corp. line of battery chargers for golf cars and maintenance vehicles.

All three meet Underwriters Laboratories standards, are competitively priced, and offer sizeable savings in energy consumption because of a low demand factor — which also permits installation of three chargers in a system that previously supported only two.

Circle 212 on free information card



Power cup cutters

R & R Products, Inc. offers two models of power cup cutters. The one shown mounts on any utility vehicle and enables anyone to cut a perfect hole in 3 to 7 seconds. Also available is a hand-held model with a 40-foot power cord. Each is powered by a 12-volt motor which connects to any battery.

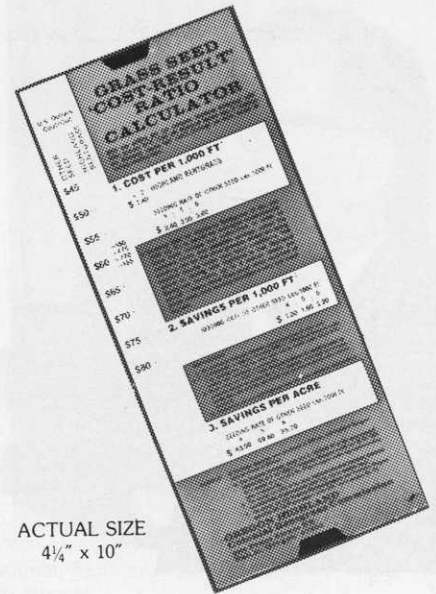
Circle 205 on free information card



Golf memo paper

A popular item for use by golf people or for sale through pro shops is called Ball Notes. The memo paper is printed to look like a golf ball and carries the saying "I'd rather be playing golf." A refillable holder dispenses one sheet at a time from a 1-inch stack. The manufacturer, Designsense, Inc., will imprint your club name or logo on the side of the holder.

Circle 210 on free information card



ACTUAL SIZE
4 1/4" x 10"

Budgeting is a Breeze with this Calculator
It's Yours Free . . . on Request

Here's a cost-calculator with which you can instantly compare the actual cost of various grass seeds.

Think on it a moment and you'll agree that cost per pound is only one factor in the cost equation. For a given price per pound you're also buying a given number of potential grass plants.

So, as in the case of Highland Colonial Bentgrass with its 8 million seeds per pound, you are buying a huge potential. Other grasses, which might cost less per pound may also have less potential grass plants so that from a practical standpoint they're more expensive than Highland.

Why not write for our free calculator. You'll find it a handy, fast method of comparing actual costs of planting bluegrass, ryegrass, bentgrass and fescue.

SEND YOUR REQUEST FOR A FREE CALCULATOR TO:

Highland Colonial Bentgrass Commission

Dept. A

Suite One, Rivergrove Bldg.
2111 Front St. N.E.
Salem, Oregon 97303

Circle 135 on free information card