

HILLERICH & BRADSBY COMPANY announces the addition of a new investment cast iron model of its Power-Bilt line of golf clubs. The new golf club line was introduced at the PGA Merchandise Show at Palm Beach Gardens, Fla., in January. Along with its investment cast irons, the company introduces its new Thoroughbred woods to be distributed this spring. They feature stainless steel investment casting that offers a contour beveled sole. Heel and toe weight balance is achieved with a cavity back rather than weighted inserts.

Circle No. 101 on reader service card

DEERE & COMPANY announces the new JD860-A scraper, a 15-yard unit that features an optional heavy-duty elevator with 75,000-pound tensile strength chain. The JD860-A's size, weight, and flotation make it an ideal machine for a variety of earthmoving jobs. It offers a 215-*SAE*-net-horsepower diesel engine, torque converter with lock-up, five-speed power shift transmission and "position-responsive" power steering with hydraulic follow-up that gives the operator a jerk-free, automotive feel.

Circle No. 102 on reader service card



PRI-LAB INDUSTRIES announces two models of sand trap rakes and a leaf rake, all made of weather resistant flexible long lasting plastic. The G-21 rake is said to be excellent for large sand traps; the G-14 is more compact with a 14-inch head, and the F-15 leaf rake is a broom style lawn rake and good for getting behind and under bushes and between paths.

Circle No. 103 on reader service card

PGA-VICTOR announces that golfing left handers now can play their right-handed counterparts on even terms with the introduction of left-handed Ryder Cup II woods and irons. These left-handed models are duplicates of the right-handed ver-

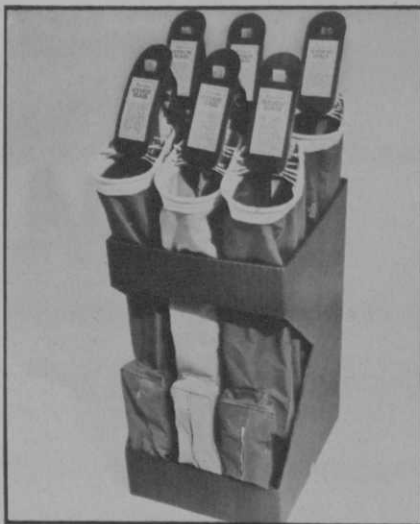


sions that received great acceptance by the better-playing right handers. Developed from investment casting, the PGA/Victor Ryder Cup II's feature a radically shortened hosel and stylish cavity-back design. The weight saved from these two innovations is repositioned into the toe and heel areas to achieve the delicate balance.

Circle No. 104 on reader service card

EDMONT-WILSON DIVISION presents the Edmont golf bag floor merchandiser. It is an attractive wood-grain display, with self-selling tags. The merchandiser keeps the bags up.

Circle No. 105 on reader service card



ROHM AND HAAS COMPANY introduces Kerb 50W herbicide for bermudagrass turf. Controls *Poa annua*. Kerb can be applied at any growing stage from germination through seed maturity and used as a pre-emergence or postemergence spray.

Circle No. 106 on reader service card

GOODALL LAWN TURF EQUIPMENT COMPANY presents the Model 12G-35B professional edger and trimmer. It is easy to handle when trimming around trees, fences, walls,

shrubs and monuments. It may be tilted when edging along sidewalks, driveways and curbs. It prevents marking or chipping of monuments and directs grass away from objects that you trim or edge, according to the company.

Circle No. 107 on reader service card

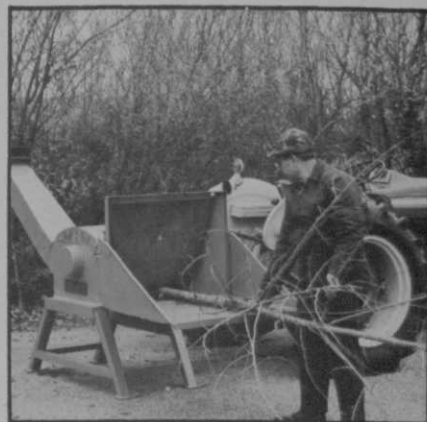


MACGREGOR COMPANY introduces a line of women's colored golf bags. Bags are accented in true violet, zinnia, apricot, sunflower rose and citrus green.

Circle No. 108 on reader service card

MITTS & MERRILL, a division of Walco National, has added a tractor mounted and driven brush chipper to their line, designed to meet the needs of those golf courses requiring a medium size but rugged brush chipper.

Circle No. 109 on reader service card



J I CASE has announced five new compact tractors for 1973 which include 8, 10, 12, 14, 16hp models in high or low profile versions with a full range of attachments. The 108 powers a 34-inch mower, 32-inch snowblower, 38-inch grader blade and will pull a dump cart, lawn sweeper and other attach-

continued

NEW PRODUCTS *continued*

ments. The 118 eight hp model features a hydrostatic transmission with a single lever control for both direction and speed, also rubber cushion engine mounts. The 210 10hp model with four forward speeds and one reverse offers the low gear necessary for tough tilling work. The 224 14hp model low profile, features hydraulic drive and flotation tires. The two cylinder 16hp Model 16 is a high clearance unit.

Circle No. 110 on reader service card



LOCKE MFG. presents the Maxi II Heavy Duty grounds maintenance mower. It features the Locke velvet-cut, and triplex unit with 87-inch mowing width and has a heavier chassis of steel weldments, stronger mounting bolts, control rods and linkages.

Circle No. 111 on reader service card



INTERNATIONAL HARVESTER COMPANY introduces five industrial tractors and allied equipment especially suitable for golf course grounds maintenance, including the 2400A Lo-Boy with three-point hitch and 84-inch mower and high flotation tires. The 3200A Compact Loader with 58-inch utility bucket or 3082 backhoe, has three-quarter ton 6.8 to 20 cubic foot capacity, turns on its own axis and works under a six foot clearance. The Cub 154 Lo-Boy with 15hp water-cooled engine

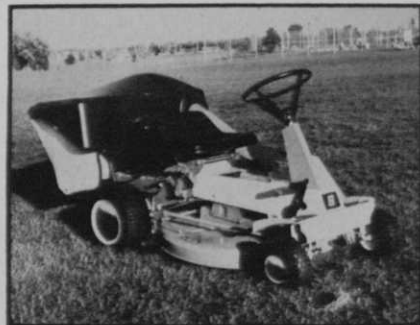
works with a center-mounted rotary mower. The 149 Cub Cadet comes with a three-point hitch and trap rake.

Circle No. 112 on reader service card



SIMPLICITY MFG. COMPANY, INC., introduces the eight hp Wonder Boy riding mower that cuts a 30-inch swath and provides a five-bushel collection hopper in back. The unit is powered by a Briggs and Stratton four cycle engine and features the free-floating mower to give a smooth even cut; also features an axle-mounted mower, a massive frame and enclosed transaxle traction drive.

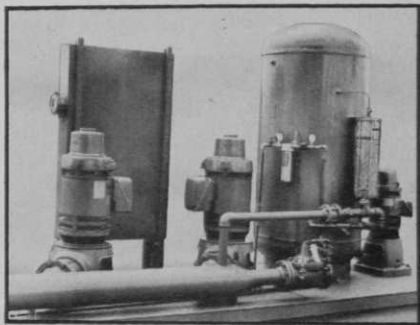
Circle No. 113 on reader service card



VENABLE SPRINKLER SALES introduces the Pump-A-Matic pre-assembled, pre-wired pump station, with pre-built flume and adjustable pre-built stacks. The unit can be installed in two days because little bolting is required. Cutoff feature turns off all pumps in case of pipe

breakage. All pump stations are equipped with slam-proof, spring-loaded checks.

Circle No. 114 on reader service card



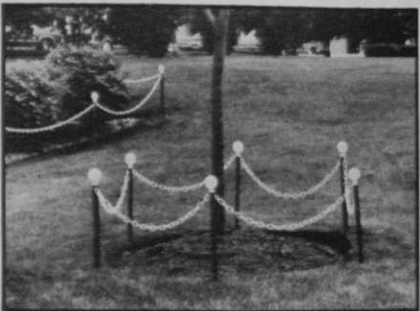
REFLECTOR HARDWARE CORP. introduces the Spacemaster garment rack system, which lets the retailer expand a single rack into a complete tandem arrangement. The system can be assembled in minutes and expanded at will and is adjustable.

Circle No. 115 on reader service card



MR. CHAIN, Division of M-R Products, makes a complete line of plastic fence components, including peg-and-chain combinations for grass and ground surfaces, post-base and chain combinations for use indoors and on paved surfaces and ball and Colonial tops, which decorate both pegs and posts.

Circle No. 116 on reader service card



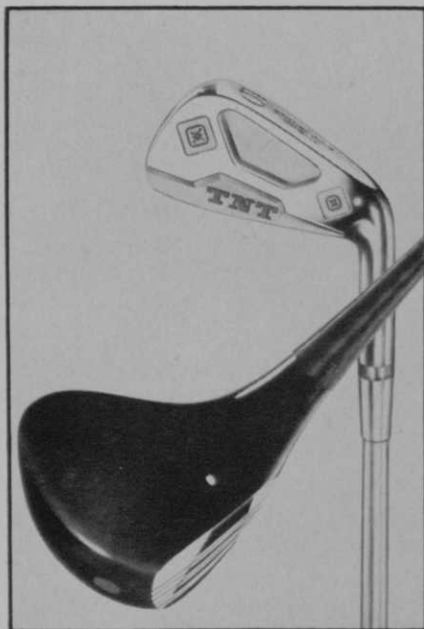
JACOBSEN MFG. COMPANY introduces the Model F-9 top dresser, which features 13.5 cubic foot hopper capacity and a rotating brush for deep distribution of top dressing. Mounted on the Model 12 truck, the unit can dress a 36-inch wide swath at speeds of up to four mph.

Circle No. 117 on reader service card



NORTHWESTERN GOLF COMPANY announces TNT model woods and irons with toe and heel weighting that is individually added at heel and toe with specially designed brass plugs. Heads are precision faced with laminated maple and the finish is ebony black. TNT irons are produced in 18-8 austenitic steel by the lost wax process. Precise relieving in the center of clubhead provides correct weight distribution and maintains strength. TNT model clubs are available with graphite, Microlite 400 stainless steel, lightweight chrome steel and dynamic steel shafts.

Circle No. 118 on reader service card



NCA TO BEEF UP AIDS TO CLUBS

Members, as well as the industry as a whole, can expect more direct action this year from the association

by **KEN EMERSON**

EXECUTIVE DIRECTOR, NATIONAL CLUB ASSN., WASHINGTON, D.C.

The National Club Assn. expanded its legislative, legal and tax service to the private club industry and elected new officers and directors at its 12th annual meeting in Honolulu, Hawaii, February 11-13.

In expanding service, the association will increase the frequency of its information services, which totaled more than 30 publications last year, add more contacts in Congress and in government agencies to its present resources and begin a new effort to aid clubs at the state level, particularly in the area of taxation. The first product of this level of activity will be NCA's 50 State Property Tax Analysis.

The association also established a precedent when it re-elected Cyril F. Brickfield to a third term as president. Brickfield, an attorney in Washington, D.C., was twice president of the Bethesda CC, is a former president of the Federal Bar Assn., is currently legislative counsel for the National Retired Teacher's Assn. and the American Assn. of Retired Persons and is a trustee of the Suburban Hospital in metropolitan Washington.

Brickfield has been closely associated with the legislative process in Washington for nearly 20 years, having served as counsel to the House Judiciary Committee for 10 years and then as Deputy Administrator of the Veterans Administration prior to his return to private practice.

Elected as vice presidents of NCA were Joseph J. Donoghue, general

manager of Losantiville CC, and Milton E. Meyer Jr., secretary of Pinehurst CC.

Secretary of the association will be Judge James J. Clyness Jr., president of the Country Club of Ithaca, N.Y.; treasurer is Louis L. Szep, general manager of the Oklahoma City G & CC.

The following are newly elected directors for a term of three years: Frank G. Hathaway, past president of NCA, secretary-treasurer of NCA, president of the Los Angeles Athletic Club; Herbert L. Emanuelson Jr., a Yale graduate and practicing attorney in New Haven, Conn.; E. Guenter Skole, general manager of the Cosmos Club, Washington, D.C., and a former director of the Club Managers Assn. of America; Louis L. Szep; Don A. Rossi, executive director of the National Golf Foundation, from Rolling Green CC, Arlington, Ill.; James E. McLoughlin, executive director Metropolitan Golf Assn. and a member of Whippoorwill Club, Armonk, N.Y.; Morris A. Cox, past president of the California GC, San Francisco, president of the Peninsula Hospital and the Rotary Club. Newly-elected directors for a one-year term are: Sam Dunham, former director NCA, from Salt Lake City, manager of the Ambassador Athletic Club and Houston White, attorney from Los Angeles, vice president of the Bank of California, past president and a director of the University Club of Los Angeles. □