



SAFETY & HEALTH ACT: ARE YOU LIVING UP TO THE LAW?

LAST OF A THREE-PART SERIES

Last month's article detailed the effects of Occupational Safety & Health Act standards on golf course maintenance and operations and emphasized safety precautions that now must be followed around equipment and machines and in storage facilities. This month's article will explore the impact the act will have on the pro shop and the clubhouse, emphasizing regulations that relate to the health portion of the act.

We will also examine one of the recurring problems created by the law's terminology, that of additions and changes to existing standards.

At this point we remind the reader that OSHA is not concerned with either the safety or the health of the club member, but only that of the club's employees.

SANITATION

About 10 pages of regulations deal with sanitation. Most of them are now under review. Although clubs must abide by existing standards, both the department of Health, Education and Welfare and the Occupational Safety and Health Administration have until April 28, 1973, to add to or change them.

Part of the reason for this stipulation in the act is that OSHA, faced with providing a large body of regulations within a short period of time, was forced to adopt a great many existing regulations that had been established by such diverse

The pro shop and the clubhouse must comply with Occupational Safety and Health Act standards to avoid penalties, even though these standards will be continuously revised or changed

by JACK JANETATOS
and KEN EMERSON

bodies, as the U.S. Public Health Service and the National Fire Protection Assn. Many of these regulations were obsolete in terms of today's technology and the additional two years (at the time of the act's passage) gave OSHA the opportunity to review and correct this body of "instant" regulations. It does, however, burden considerably the individual club, which must keep track of these changes and additions to comply with the law. (One of the functions of the National Club Assn. is to inform the industry through articles such as this one and its members through its monthly newsletter.)

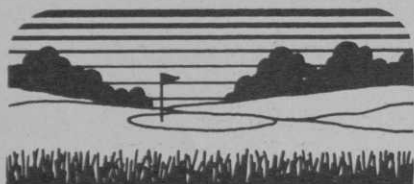
One graphic illustration, out of some 55 changes and additions that were offered as proposed regulations by OSHA on July 15, 1972, states that "clean ice will be permitted in drinking water." The present American National Standards Institute standard had justi-

fication for prohibiting ice in drinking water when the original standard was established, because *much ice was cut from rivers and lakes*. Today, ice is machine made, and sanitation in its manufacture is practicable. (Words are OSHA's, emphasis is editor's.)

Other sanitation standards important to clubs are:

1. False floors, platforms, mats or other dry standing places or appropriate waterproof footwear is required where wet processes (silverware or pot washing) take place;
2. Where vermin are detected, extermination is required;
3. Drinking water is required within 200 feet of working places (office areas);
4. Toilet facilities are required within 200 feet of a place where employees regularly work;
5. Toilet paper holders are required in all facilities and covered receptacles must be provided for women's toilets;
6. Other regulations deal with the construction specifics of the employee toilet facilities and provide that all receptacles must have open front seats;
7. Nonpotable water is permitted for cleaning and bathing, provided it has been properly treated;
8. One wash basin is required for each toilet facility;
9. At least one couch or bed must be provided in every place where 10 or more women are employed;

continued on page 50



Highland Colonial Bentgrass gives you Economy & Quality

You can count on Highland. It's the fine-bladed workhorse of Colonial Bents. Blue-green in color, it's a slow-growing, winter-hardy species which provides spring strength in an overseeding mixture.

COUNT ON HIGHLAND TO

- Retain fine color in cool weather
- Stand up to heavy foot and vehicle traffic
- Thrive on close cutting to 1/4 inch
- Remain attractive when left uncut
- Be adaptable to varying soils and climates
- Be among the most economical of the fine-bladed grasses

Write for free brochures
Answers to Questions About
Highland Bentgrass
Cultural Practices
Highland on the Golf Course



Highland Bentgrass Commission

Dept. A/Suite One/Rivergrove Bldg.
2111 Front Street, NE/Salem, Oregon 97303

For more information circle number 160 on card

OSHA from page 49

10. All employee food service shall meet the requirements of the U.S. Public Health Service;
11. All floors and work areas must be maintained in a clean and dry condition.

FIRE

Because of the extensive work done by the National Fire Protection Assn., fire safety regulations are more comprehensive and detailed than those in many other areas. Of particular concern to the clubs will be those standards affecting the use of portable extinguishers.

1. Portable extinguishers must be maintained in fully charged and operable condition and kept in their designated places at all times when they are not being used (These must be marked in red.);
2. Extinguishers are classified by type and intended use and must be so marked in such a way as to make their selection unmistakable;
3. Extinguishers must be maintained in good condition and kept in areas of free and ready access. They must be inspected at least once a year and must be refilled whenever they fall more than 10 per cent below capacity;
4. Extinguishers must be provided for the protection of both the building structure, if combustible, and the occupancy hazards;
5. In general, extinguishers must be located within 50 to 75 feet of any potential fire hazard;
6. The number of fire extinguishers per potential hazard is carefully spelled out by the regulations in terms of class and rating;
7. All extinguishers must be tagged to show the maintenance or recharge date and the initials or signature of the person who performs this service.

A considerable body of regulations deals with the safety requirements of fire exits. In general these require that:

1. Every building have enough exits to permit prompt escape of the occupants in case of fire;
2. Such exits must be kept free and clear of all obstructions. The approaches to these exits may never be blocked;
3. Every exit and the route to it must be clearly marked and artifi-

continued on page 52

WINTER PROFITS? HOW?



SKIING!

As you know, the interest in skiing parallels that of golf—SKYROCKETING! If your golf club has the two basic ingredients for skiing—a modest hill and snow (natural or artificial), you can begin to take advantage of this fast growing sport in what would normally be your off-season.

Look at some of the ADVANTAGES:

1. Income through sale of tickets.
2. Income through rental of equipment.
3. More efficient use of facilities—locker room, pro shop, restaurant, bar.
4. Year-around employment to help keep qualified employees.
5. Year-around recreation for members.
6. Your club even has a distinct advantage over ski areas—accessibility to members!

What about a ski lift? The Mitey Mite II, in widespread use at major ski resorts, would be ideal for your club, because of its versatility.

It's a heavy-duty, sophisticated surface lift, yet requires NO structures that could damage turf. Available in gas or electric models, it can be extended to any length up to 1000 ft. There are permanent handles, which makes it easy for even beginners to ride.

Ski Facilities, Inc., can advise you on every aspect of preparing your club for skiing, from slope selection to instruction, including artificial snow-making. Write or call today for more details.

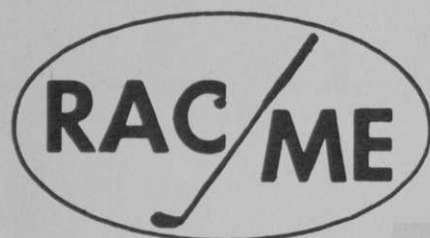


ski facilities, inc.

2740 4th Ave. S., Seattle, WA 98134
(206) 624-7561

For more information circle number 189 on card

GOLF BAG STORAGE RACKS



TRADE

MARK

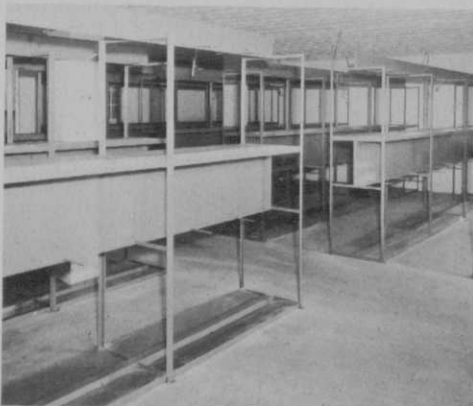
38 YEARS IN BUSINESS
Call Collect 301-322-3900
Or Write For Free Literature

INSTALLATIONS INCLUDE:

Chevy Chase C.C., Chevy Chase, Md.
Congressional C.C., Bethesda, Md.
Garden City G.C., Garden City, N.Y.
Dunbar C.C., Lake Arrowhead, Calif.
Scarsdale G.C., Hartsdale, N.Y.
Royal Poinciana G.C., Naples, Fla.
Longboat Key C.C., Sarasota, Fla.
Woodbridge C.C., Woodbridge, Conn.

IMPROVE BAG STORAGE BEST BY TEST

**WE DESIGN YOUR LAYOUT—
ECONOMICAL—EASY TO
ASSEMBLE HEAVY DUTY
FURNITURE STEEL—
NO OTHER PARTS TO BUY—**



ACME IRON WORKS, INC.

4900 Frolich Lane, Kenilworth Ind. Park
Tuxedo, Md. 20781

For more information circle number 155 on card

KEN Shop Supplies Help You Give Better Service



**KEN
Tacky
Grip Conditioner**

ALSO: Stains, Lacquers, Adhesives,
Grips, Listing, Whipping, Shafts,
Collars, Plugs, Sheathing, Buffing
and cleaning supplies; Golf Club
Scales; Official, Lorythmic, Pro-
rythmic.

ALL OTHER SHOP NEEDS

Kenneth Smith

GOLF CLUBS

Hand Made to Fit You

World's Largest Custom Club Maker

Box 41-GM, Kansas City, Mo. 64141, U.S.A.

For more information circle number 157 on card

Light Weight - One Hand

RAKE-Ezee

SAND TRAP RAKE

Short
handle,
light
weight.
Golfer can
rake trap
while
holding club
in other hand.



**HIGH DENSITY
PLASTIC WEATHER-PROOFED**



The bright, yellow-
handled RAKE-Ezee
Rake flags attention,
reminds golfers to rake
trap. Stands erect on
blunt metal point.

Sturdy, attractive, won't
rust, yet low in cost. Rake-Ezee
stands erect on point, reminds golfer to
rake trap. Fully guaranteed with tough
plastic head. See your distributor, or
write: >

MFD: BY

NORTH CENTRAL

Plastics INCORPORATED
ELLENDALE, MINN.

For more information circle number 156 on card

OSHA from page 50

cially illuminated with an appropri-
ately lighted sign;

4. Every door that is not an exit, but
might be mistaken for one, must be
clearly marked to prevent anyone
from being trapped in a dead-end
space;

5. Special emphasis is placed on
keeping halls and areaways and all
work areas in and near exits free of
obstacles. Inspectors have fined
companies that leave packing ma-
terials either in these areas or on
external ramps and have been ex-
tremely critical when these crucial
areas have been used for temporary
storage.

A considerable body of regula-
tions cover the use of automatic
fire control equipment. Much of
these regulations are technical and
are designed to meet the standards
of the National Fire Protection
Assn. For clubs, the most impor-
tant directive is that this equipment
must be in a continuously work-
ing condition. The same require-
ment is made of a fire alarm system;
if you have one, it must work.

STORAGE

Storerooms must be kept in a clean
and hazard free condition. All po-
tential dangers, such as low over-
heads or projecting valves, must be
appropriately marked.

Special storage compartments
must be maintained for all toxic
cleaning compounds and steriliz-
ers, including those used in swim-
ming pools. These should be marked
with the contents and appropriate
warning signs posted.

ELECTRICAL

The standards for electrical equip-
ment are extensive.

1. All circuits must be grounded;
2. Although the standards con-
cerned with much of the equipment
are currently under revision, it
can safely be said that all wiring
must include the third grounding
post that is often removed from
plugs by employees, so that the
plugs will accommodate old, non-
code wall fixtures and plugs;
3. All extensions must be of com-
mercial or heavy-duty grade. Using
household type wiring for an ex-
tension cord is a sure way to draw a
fine;

continued on page 55

OSHA from page 52

4. All wiring must be in good condition and of the proper type. Rubber insulated cords cannot be substituted for flexible cable; flexible cable cannot be substituted for conduit when required by the code.

Particular attention should be paid to these directives in the golf shop, where extension cords and the grounding of equipment is frequently faulty. This equipment, which is often installed on the spur of the moment by a club cleaner or assistant, can be particularly dangerous when used by inexperienced help. The same conditions are likely to exist in the locker room where attendants make temporary repairs to polishing and buffing equipment. Similar attention, particularly to grounding pots, should be paid to such equipment as vacuum cleaners and floor polishers. In storage areas, lightweight, household extension cord is frequently used to string temporary light bulbs. This type of wiring is inadequate.

FIRST AID, MEDICAL

As on the golf course, approved first-aid kits must be maintained in appropriate areas. Special attention should be paid to replacing their contents, which are often depleted without the knowledge of supervisors.

STAIRWAYS, LADDERS

The existing regulations covering stairways and ladders are too extensive to include here, even in review. In general, common sense safety is the primary requisite. Some of the more important regulations are:

1. All ladders must be safe and have no damaged or broken rungs;
2. All ladders must have safety feet;
3. Ladders that might be considered dangerous must be marked;
4. Metal ladders must be free of all hazards, such as sharp edges or burrs;
4. The rope used with the pulley on extension ladders must be not less than 5/16 of an inch in diameter, with a minimum breaking strength of 560 pounds;
6. All stairways must be equipped with handrails not less than 29 inches high;
7. All stairways must be in good re-

pair, kept clear and unobstructed. Treads must be uniform and in good condition.

EQUIPMENT

Many clubs maintain repair and maintenance shops in various degrees of completeness. These should review the many standards covering lathes, grinders, welding equipment, woodworking tools and other maintenance equipment covered in the Nation Club Assn.'s OSHA Manual.

Every club that has not already done so should immediately insti-

tute a program to bring their entire physical plant into compliance with safety and health standards. Delay would, at best, produce only administrative problems and possible fines; at worst, serious injury to employees. Furthermore, club officials should be aware of the direct benefits that affect their members from any improvement in the safety conditions on the club grounds. Lastly, all club officials should also be aware and make use of the assistance available to them through GOLFDOM and the National Club Assn. □



LITTLE BEAVER SPIKER

RED RIDER

Easiest loading, easiest operating and most durable workcart in America



TOP RIDER

The only riding top dresser—three times faster than any other top dresser.

Smithco's REDHEADS
keep greens greener!

SMITHCO'S big three—featuring the **LITTLE BEAVER** has to be the first team of turf maintenance equipment. **LITTLE BEAVER** greens spiker is the fastest riding spiker anywhere! Spikes 18 holes in 2½ hours. Turns on greens without ripping. They all have the interchangeable big red power heads. Check **Smithco's REDHEADS** when you want greener greens.

For more information circle number 174 on card