



23D CENTRAL PLAINS CONFERENCE,  
Manhattan, Kan., October 18-20.

SPRINKLER IRRIGATION ASSN. ANNUAL CONVENTION AND MANAGEMENT SEMINAR, Del Monte Hyatt House, Monterey, Calif., October 29-31.

ANNUAL INSTITUTE ON PARKS AND GROUNDS MAINTENANCE, Muehlebach Hotel, Kansas City, Mo., October 30-November 2.

3D ANNUAL GEORGIA GCSA/UNIVERSITY OF GEORGIA TURFGRASS SHORT COURSE, Center for Continuing Education, University of Georgia, Atlanta, Ga., November 5-7.

PANHANDLE TURFGRASS ASSN. FIELD DAY., Oldham Recreation Center, Vega, Tex., November 6.

THE NEBRASKA TURFGRASS CONFERENCE, Kellogg Center, University of Nebraska, November 20-22.

27TH OKLAHOMA TURFGRASS CONFERENCE, Student Union, Oklahoma State University, Stillwater, Okla., November 29-30.

GOLF COURSE SUPERINTENDENTS ASSN. OF AMERICA TURFGRASS CONFERENCE AND SHOW, Statler Hilton, Boston, Mass., January 7-12, 1973.

PROFESSIONAL GOLFERS' ASSN. MERCHANDISE SHOW, PGA National GC, Palm Beach Gardens, Fla., January 20-23, 1973.

VIRGINIA TURFGRASS CONFERENCE, Sheraton Motor Lodge, Fredericksburg, Va., January 30-31, 1973.

CLUB MANAGERS ASSN. OF AMERICA ANNUAL MEETING, Hilton Hawaiian Village, Honolulu, February 12-18, 1973.

## GOLF BAG STORAGE RACKS



TRADE

MARK

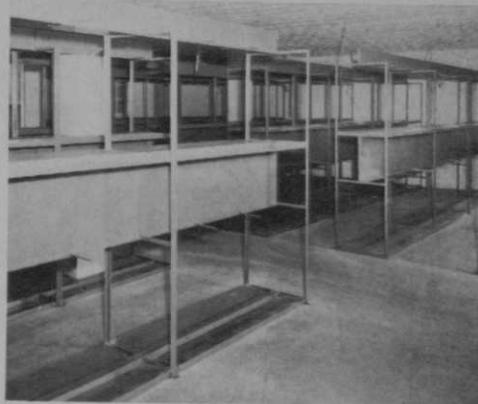
**38 YEARS IN BUSINESS**  
**Call Collect 301-322-3900**  
**Or Write For Free Literature**

### INSTALLATIONS INCLUDE:

Chevy Chase C.C., Chevy Chase, Md.  
Congressional C.C., Bethesda, Md.  
Garden City G.C., Garden City, N.Y.  
Dunbar C.C., Lake Arrowhead, Calif.  
Scarsdale G.C., Hartsdale, N.Y.  
Royal Poinciana G.C., Naples, Fla.  
Longboat Key C.C., Sarasota, Fla.  
Woodbridge C.C., Woodbridge, Conn.

## IMPROVE BAG STORAGE BEST BY TEST

**WE DESIGN YOUR LAYOUT—  
ECONOMICAL—EASY TO  
ASSEMBLE HEAVY DUTY  
FURNITURE STEEL—  
NO OTHER PARTS TO BUY—**

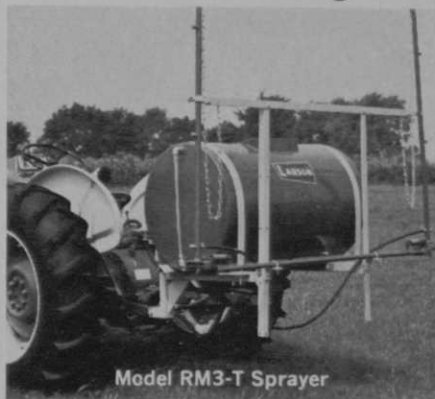


## ACME IRON WORKS, INC.

4900 Frolich Lane, Kenilworth Ind. Park  
Tuxedo, Md. 20781

For more information circle number 182 on card

## Versatility for more PROFIT



Model RM3-T Sprayer



Model 413 "Piggyback" Spreader

from **LIQUID** Sprayer to **DRY** Spreader  
with **LARSON** E-Z 3-Point Hitch Equipment

Here's two tractor-mounted units that can cut your golf course maintenance costs on obnoxious weed-control programs. Spray hand-guns and other accessories are available to further increase the utility and investment value of each unit. The LARSON LINE is first choice of many knowledgeable golf course superintendents and professional turf men.

■ For complete specifications, Write, Wire or Call TODAY!

QUALITY  
PRODUCTS  
by LARSON  
SINCE 1944

**LARSON** MACHINE, INC.  
SINCE 1944

PRINCEVILLE, ILLINOIS 61559 · PH. (309) 385-4312  
MANUFACTURERS OF BROADCASTERS, SPRAYERS AND ACCESSORY EQUIPMENT

For more information circle number 173 on card