



GOLFING ACROSS CANADA

Lush, verdant courses on the slopes of the Rocky Mountains or in the scenic valleys between; stunning layouts on the windswept plains of Western Canada; courses hewn from the deep bush and impenetrable rock of the Canadian Shield; the world's most difficult public course in exciting Toronto; the French flavor of Quebec; and the lovely seaside courses of Atlantic Canada, so reminiscent of Britain and Scotland.

The season blooms with spring and runs into the colorful Canadian Indian summer, which can stretch until mid-November (or all year in British Columbia).

Entry into Canada is simple. Citizens or permanent residents of the U.S. do not need passports or visas. (To assist border officers, however, visitors should carry proof of citizenship.) Necessary wearing apparel and personal effects are admitted duty-free. Up to 50 cigars, 200 cigarettes, two pounds of tobacco and 40 ounces of alcoholic beverages per adult may be included, as well as sports equipment declared at point of entry.

For the golfing holiday of a lifetime, challenge Canada. Some of the finest, most spectacular courses in the world are waiting for you. Air Canada and Canadian Pacific Air offer daily trans-continental service for the visiting golfer who prefers to travel by air. Canadian National and Canadian Pacific Railways also offer excellent rail service from coast to coast.

ATLANTIC CANADA

PRINCE EDWARD ISLAND

Can be reached via ferry from Cape Tormentine, New Brunswick or Caribou, Nova Scotia.

This tiny province has seven courses sprinkled over its rolling pastoral landscape. P.E.I. gets considerable rainfall, while temperatures rarely exceed 75 degrees. Courses do not "bake out" in July or August heat waves. Spend a week—play a different course each day.

BRUDENELL G & CC: An 18-hole, 6,500-yard layout, 30 miles east of Charlottetown. Hard by the Brudenell River, a fact you're not likely to forget as there are seven water holes. The course is part of an overall sports complex that includes first-class motel accommodations, lounges, etc. Green fees: \$3 through May, June, September

and October; \$4 for July and August. Weekly rate is \$12 and \$15, respectively.

BELVEDERE G & WINTER CLUB: On outskirts of Charlottetown, the only semi-private club on P.E.I. Guests must tee off before 3 P.M. on weekdays and after the same hour on weekends and holidays. Is 6,372 yards (par-72). Green fees: \$4, May-October.

STANHOPE: Newest course on north shore. Is 16 miles from Charlottetown. Layout, terrain and rates similar to Brudenell.

RUSTICO: Less than 10 miles from Stanhope, 18 holes around the shores of Rustico Bay. Restaurant, clubhouse, pro shop. Green fees: \$2, May-Oct.

GREEN GABLES: The 6,269-yard course is the home of "Anne of Green Gables." Anyone who plays it will remember the approach to the ninth green, which sits atop a high cliff and is guarded by water at the bottom, with Anne Hathaway's cottage almost beside it. Green fees: \$4, May-October.

MILL RIVER: Officially opened in 1971, an 18-hole course on Highway 2 in the Cascumpeque Bay area, toward the east of the island. A challenging test, already being compared to Brudenell. Same rates, too.

SUMMERSIDE G & CC: 18 holes, a few miles from Malpeque Bay. Oysters are the restaurant specialties. Green fees: \$3, May 15-October 15.

NOVA SCOTIA

Sport fishermen and summer sailors are well acquainted with Canada's easternmost province. Golfers should be, too.

CAPE BRETON HIGHLANDS: One of the great adventures in golf, this fiendishly difficult yet irresistible course combines seaside, valley and mountain settings in perfect proportion. The course plays 6,475 yards (par-72) and has at least one particularly memorable hole, the 565-yard fifth, called "Killiecrankie," meaning in Gaelic "a pain in the key area."

Fine food and gracious elegance are trademarks of Keltic Lodge. The course and lodge are all part of Cape Breton Highlands National Park. Green fees: \$4, \$20 weekly, May-October. Rates at lodge, \$38-\$47 per day, AP, shared. Book in advance.

OAKFIELD: At 6,975 yards (par-72), one of the outstanding tests in the province. Situated on Grand and Fish



Preceding page: top, Jasper Park GC, Alberta; in "leaf," Le Manoir Richelieu, Quebec. Above: Keltic GC, Cape Breton Highlands National Park, Nova Scotia.

Lakes, 26 miles from Halifax and 22 miles from Dartmouth. Was site of 1971 Canadian Amateur Championship. Lakeside setting ensures a breeze at all times. Club has own sand beach; clubhouse has full facilities. Green fees: \$6 weekdays, \$7 weekends.

NEW ASHBURN: At Kinsac Lake, longest course in Nova Scotia at over 7,100 yards (par-72). Carved out of virgin lakeside woodland. A huge double green serves the sixth and 11th holes.



OLD ASHBURN GC: Within city of Halifax. It's narrow, hilly, well-wooded and watered. Short at 5,322 yards (par-66), the emphasis is on accuracy. Very reasonable green fees.

YARMOUTH G & CC: Gorse, briar and occasional fog give course a Scottish flavor.

DIGBY PINES: This 300-acre resort overlooking Bay of Fundy offers complete family recreational facilities. 94 guest rooms, 28 cottages and a 6,140-yard (par-71) layout that winds through trees, over rolling hills and blue water. Special six-day golf package includes accommodations, breakfast and dinner, complete use of facilities for \$117 shared, \$141 for single. Digby Bay

scallops should be sampled.

TRURO GC: At 6,380 yards (par-70), it is site of major provincial tournaments every year.

BRIGHTWOOD G & CC: Perched on a high hill in center of Dartmouth, it offers spectacular views of both Dartmouth and Halifax. Course is 5,705 yards long (par-68).

LINGAN CC: Just outside Sydney, considered one of toughest courses in Atlantic area. It's 6,711 yards long and has a par-six hole for ladies.

KEN-WO: Halfway between Kentville and Wolfville. Has a spectacular back nine.

ABERCROMBIE G & CC: At New Glasgow, a stiff 6,450-yarder featuring a

440-yard par-four with two creeks and a horseshoe green. Green fees: \$4. Accommodations: \$14.

NEW BRUNSWICK

This province offers many unusual attractions, such as reversing waterfalls, the longest covered bridge in the world, the Magnetic Hill, where your car seems to coast uphill backwards, and the 80 square-mile wilderness that is Fundy National Park. There are also some fine golf courses.

THE ALGONQUIN HOTEL: In St. Andrews-by-the-Sea, 68 miles east of St. John on Highway 1. A resort landmark on shores of Passamaquoddy Bay for more than 80 years. The 6,314-yard (par-71) course has 12 of its 18 holes either beside or in full view of the Bay. Green fees: \$5.50 or \$27.50 a week. Holiday package (Fairway Plan) offers 7 days, 6 nights accommodations with breakfast and dinner, golf, all other resort facilities from \$99 standard (double occupancy) to \$115 superior, plus 8% provincial tax.

MACTAQUAC PROVINCIAL PARK AND GC: 10 miles west of Fredericton and five miles off the Trans-Canada Highway on Route 105. Entry to park is 50¢ per day or \$2 for the season, which also allows entry to all New Brunswick provincial parks. The course, designed for the Canadian Open, plays at 7,030 yards (par-72). Green fees: \$4 weekdays; \$5 weekends and holidays; \$20 for seven days; 30-day period, \$50 men, \$40 women; seasonal, \$90 men, \$75 women. Caddies available by prior arrangement; hand carts, 65¢ per day; electric cars, \$6 for 18 holes or \$3.50 for nine; club rentals, \$1.50 per day. The lodge is fully licensed, with a large dining room.

FREDERICTON GC: Three miles from downtown Fredericton via Highway 2, a well-trapped, hilly par-70 layout at only 5,934 yards. Hand carts and clubs for rent. Green fees: \$5; \$25 weekly and \$50 monthly. Abundant accommodations available in area, with cabins at the edge of course, hotels and motels within a mile.

RIVERSIDE CC: At East Riverside, eight miles northeast of Saint John via the Old Rothesay Road. The 18 holes play over 5,960 yards (par-71). Hand carts available for \$1, electric cars for \$7.50, clubs for \$4. The club is private, but members of other private clubs may play for green fees of \$5.

continued

...IN GOLF'S OWN COUNTRY

Plan your Canadian Golf Vacation with the help of the following list supplied by a leading Canadian Golf magazine. It is representative of Canada's many top quality courses. All courses listed are open to the public.

BRITISH COLUMBIA

Campbell River GC	Campbell River
Cherry Grove G&CC	Oliver
Chilliwack G&CC	Chilliwack
Chilliwack G&CC	Sardis
Fairview Par-3 GC	Kelowna
The Harrison GC	Harrison Hot Springs
Hazelmere Valley GC	Surrey
Metochosin GC	Victoria
Mount Brenton GC	Chemainus
Peace Portal GC	White Rock
Penticton GC	Penticton
Royal Colwood GC	Victoria
Salmo Golf Port GC	Salmo
Salt Spring Is. G&CC	Ganges
Slocan Lake GC	New Denver
Sumac Ridge GC	Summerland
Thornhill G&CC	Terrace
Vernon G&CC	Vernon

ALBERTA

Banff Springs GC	Banff
Barrhead GC	Barrhead
Coronation G&CC	Coronation
Devon G&CC	Devon
Highwood G&CC	High River
Jasper GC	Jasper
Lacombe G&CC	Lacombe
Leduc G&CC	Leduc
Palm Springs G&CC	Medley
Parkland G&CC	Bowden
Pigeon Lake GC	Melhurst
Ponoka Community GC	Ponoka
Redwater Community GC	Redwater
Riverside GC	Edmonton
Taber GC	Taber
Turner Valley G&CC	Black Diamond
Vegreville GC	Vegreville
Victoria GC	Edmonton

SASKATCHEWAN

Bellacres GC	Luseland
Caledonia GC	Milestone
Cooke Municipal GC	Prince Albert
Cowton GC	Maple Creek
Deer Park GC	Yorkton
Humboldt GC	Humboldt
Lakehurst GC	Gravelbourg
Lanigan G&CC	Lanigan
Meadowdale GC	Gull Lake
Melville GC	Melville
Moose Jaw CC	Moose Jaw
Murray Municipal GC	Regina
Nipawin G&CC	Nipawin
North Battleford G&CC	North Battleford
Shellbrook GC	Shellbrook
Tisdale Riverside GC	Tisdale
Wadena GC	Wadena
Waskesiu GC	Prince Albert
Weyburn GC	Weyburn
Willowbunch GC	Willowbunch

MANITOBA

Binscarth GC	Binscarth
Birtle Riverside GC	Birtle
Carman GC	Carman
Dauphin G&CC	Dauphin
Emerson GC	Emerson
Gilbert Plains CC	Gilbert Plains
Glenboro G&CC	Glenboro
Minnedosa & District GC	Minnedosa
Neepawa G&CC	Neepawa
Pine Falls GC	Pine Falls
Reston GC	Reston
Roblin G&CC	Roblin
Rosshorn GC	Rosshorn
Sunnyside G&CC	Brandon
Swan River GC	Swan River
Valleyview GC	Rapid City
Winkler GC	Winkler

ONTARIO

Abitibi GC	Iroquois Falls
Albion Hills G&CC	Bolton
Anderson Park GC	Borden
Annadale CC	Pickering
Beaverdale G&CC	Preston
Blenheim Community GC	Blenheim
Bluewater GC	Bayfield
Brookfield CC	Preston
Brookwood CC	Agincourt
Burlington Springs G&CC	Burlington
Canadain Forces GC	Trenton
Canard Valley GC	McGregor
Conestoga CC	Conestoga
Deep River GC	Deep River
Don Valley GC	Willowdale
Doon Valley GC	Kitchener
Dundas Valley G&CC	Dundas

ONTARIO (continued)

East Park Golf Garden	London
Elmira GC	Elmira
The Espanola G&CC	Espanola
Galagades GC	Galt
Glen Cedars GC	Claremont
Haileybury GC	Haileybury
Hearst GC	Hearst
Hornby Towers GC	Hornby
Humber Valley GC	Rexdale
Kapusking GC	Kapusking
Kenora G&CC	Kenora
Lakeside Park GC	Port Dover
Lido Golf Centre GC	Oakville
Little River G&CC	Windsor 18
Muskoka Sands GC	Gravenhurst
New Liskeard G&CC	New Liskeard
North Shore GC	Red Rock
Oak Hall Par-3 GC	Niagara Falls
Onapping GC	Onapping
Orangeville G&CC	Orangeville
Orchard Beach G&CC	Keswick
Paris GC	Paris
Picton G&CC	Picton
Pine Crest GC	Peterborough
Pine Ridge GC	Campbell Ford
Puslinch Lake CC	Hespeler
Richbrook G&CC	Utopia
Rideau Lakes G&CC	Westport
Ridgetown GC	Ridgetown
Rolling Hills G&CC	Stouffville
Roseland GC	Windsor
Saugeen GC	Port Elgin
Sherwood G&CC	Brockville
Smiths Falls G&CC	Smiths Falls
Stark's Golf Corner GC	Port Rowan
Strathroy GC	Strathroy
St. Thomas Public GC	St. Thomas
Summer Heights G&CC	Cornwall
Sunny Brae GC	Port Perry
Tam O'Shanter GC	Agincourt
Thunder Bay Municipal GC	Thunder Bay
Tyanandaga GC	Burlington
Wardsville GC	Wardsville
Wasaga CC	Elmule
Westview GC	Aurora
Willow-Dell GC	Niagara Falls
Wyldwood GC	Hornby

QUEBEC

Baie Comeau GC	Chute aux Outardes
Beauchateau CC	Maple-Grove
Bel-Air GC	Ste-Scholastique
Berthier GC	Berthier
Boule Rock GC	Mont Joli
Bromont GC	Bromont
Cap-Rouge G&CC	Cap-Rouge
Chicoutimi GC	Chicoutimi
Drummondville GC	Drummondville
Gatineau G&CC	Lucerne
Glenlea GC	Aylmer East
Gray Rocks GC	St. Jovite
Hemmingford GC	Hemmingford
Homestead G&CC	Lachute
Kingsway Park G&CC	Aylmer East
La Tuque GC	La Tuque
Lac St. Joseph GC	Ste. Catherine
Le Chantecler GC	Ste. Adèle
Le Chateau Montebello GC	Montebello
Le Club de Golf du Bic GC	Bic
Lennoxville G&CC	Lennoxville
Maisonnette & Viau GC	Montreal
Manoir Richelieu GC	Murray Bay
Mont Gabriel Lodge GC	St. Adèle
Mont Laurier GC	Mont Laurier
Mont Tremblant G&CC	Mont Tremblant
Mountain Acres GC	Nantel
St-Georges GC	St. Georges Beauce
St. Zotique GC	St. Zotique
Sorel Tracy GC	Tracy
Valleyfield GC	Valleyfield
Victoriaville GC	Victoriaville

MARITIMES

Algonquin GC	St. Andrews, N.B.
Belvedere GC	Charlottetown, P.E.I.
Brudenell Resort GC	Charlottetown, P.E.I.
Ken Wo GC	Wolfville, N.S.
Pines Hotel GC	Digby, N.S.
Plaster Rock GC	Plaster Rock, N.B.
Ridgeview Greens G&CC	Minto, N.B.
Rustico GC	Rustico, P.E.I.
Seaview GC	North Sydney, N.S.

EDMUNDSTON GC: Its 6,663-yard layout is one of most difficult in province. One par-three requires a shot over a railway line. Some tee shots here did not stop until they reached Montreal! Green fees: \$5.

Other courses of interest are the Ar-oostook Valley CC, Gowan Brae G & CC at Bathurst, the Moncton G & CC, the Mountain Ridge GC at the Magnetic Hill, the Westfield G&CC and the golf course in Fundy National Park.

QUEBEC

If gourmet cooking at the 19th hole turns you on, then Quebec is for you, as superb French-Canadian cuisine, and other fine dishes, are featured at almost all golf courses. There are more than 190 courses in the province.

GRAY ROCKS INN: One of the finest and best-known layouts in Canada. Located at St. Jovite, 74 miles north of Montreal via the Laurentian Auto-route and Highway 11. The resort offers complete vacation packages in addition to golf.

The 6,445-yard golf course (par-72) is surrounded by mountains and rolling hills. Hand carts, caddies, electric cars and club rentals are available. Green fees: \$5.50; \$6.50 on weekends for non-guests. Golf packages from May 30th to July 11th and from September 6th to October 12th offer shared accommodations for seven days and nights, three meals each day, and green fees for \$121 to \$138 per person. The golf-week price from July 12th to September 5th is \$134.50 to \$154.50.

LE CHANTECLER: At Ste-Adele, is reached via the Autoroute from Montreal. The 6,060-yard (par-70) layout is a mountain course of great beauty. Green fees: \$4 weekdays, \$7 weekends. Equipment available for rental. The hotel and cottages can accommodate 300, and there are many other hotels, motels and cottages in the area. The season is late May to late October. Special golf weeks are available at \$167 each, double occupancy (including electric golf car). Other sports facilities.

MONT GABRIEL LODGE: Sits atop a mountain at Ste-Adele, 39 miles north of Montreal, via the Autoroute and Exit 27. It features golf, swimming, riding, tennis, dancing, French cuisine (the Saturday-night buffets are famous). The 6,375-yard (par-72) golf course is quite picturesque. Green fees:

Canada

continued



GOLF WEEK

only \$147.50

(canadian funds, per person,
double occupancy)

**The Sunday to Friday package
includes the following:**

- * 5 days of golf (Monday through Friday) on Chantecler's 18 hole, 6,260 yard, par 70 course.
- * The use of an electric golf cart for 5 days.
- * One golf lesson.
- * Accommodations for 6 days and 5 nights.
- * 5 hearty breakfasts and 5 full course dinners (table d'hôte).
- * Full week of golf events such as mixed two ball, beat the pro, Atlantic handicap and best ball tournaments.
- * Full week of social events such as "meet the pro" cocktail party, golf film nite, bingo nite, etc.
- * Free use of most recreational facilities including indoor solarium swimming pool, fully supervised beach and tennis in our clean mountain air.

Organized bus tours and Riding Academy at moderate cost.
Add 8% Provincial Tax and 12 1/2 % Service Charge.
Add \$25.00 for single occupancy.
Also available are a 3 day 2 night golf package and a special non-golfer program.



le Chantecler

Ste-Adèle, Québec, Can.
42 minutes north of Montréal
via Laurentian Autoroute, Exit 42

For further information and instant reservation see your travel agent or call your nearest Chantecler reservation office (collect): Montréal (514) 866-6661, New York (212) 725-2244, Boston (617) 969-4457, Toronto (416) 364-8525, Telex 01-25614, Cable chanteclerstad. Call American Express Reservations (Space bank), U.S.A. (800) AE-8-5000, CAN. (416) 486-4850.

Write for our complete golf and summer vacation planning kit.

Name _____

Address _____

City _____

State _____ Zip _____

\$4 weekdays, \$6 weekends. A six-day package is offered for \$116, shared accommodation, and includes meals.

THE ALPINE INN: At Ste-Marguerite, an hour's drive up the Autoroute from Montreal, leaving at Exit 29. The Inn features a pool, tennis, putting green, dancing. The nine-hole golf course is surrounded by trees and mountains. Green fees: \$4; \$5 weekends. Accommodations at the Inn, \$18-21 per person, shared occupancy, includes meals.

LE MANOIR RICHELIEU: One of finest resorts in North America. Luxurious, completely modern and well-maintained. Located at Murray Bay (Pointe-au-Pic), on the north shore of the St. Lawrence River, 90 miles north-east of Quebec City and 255 miles northeast of Montreal. Hotel faces the St. Lawrence, which is 15 miles wide at this point. Is easily reached by all forms of transportation—Route 9 or 20 to Quebec City and then Route 15. Season runs from June to September.

The 6,110-yard (par-70) golf course, two miles from the hotel, is spread on a ledge of mountainside. From first tee you have a spectacular view. Clubhouse is 750 feet above the river, and there is a bar at the ninth-hole halfway house. Free transportation from hotel to course.

LE MANOIR ST-CASTIN: 1,000 feet above sea level, on the south shore of Lac Beauport, in the Laurentian Mountains. Only 15 minutes from Quebec City. Offers golf and other sports. The par-70 golf course overlooks the lake. All-inclusive golf weeks, six nights and five days, from Monday to Saturday noon, include breakfast, dinner and green fees. The price in May, June and October is \$115-\$145; in July, August and September it is \$140-\$160.

CHATEAU LAC BEAUPORT: High in the heart of the Laurentians, 10 miles from Quebec City via Route 54. Facilities include golf, a private beach, pool, tennis, fishing, riding, cycling, other entertainment. Golf course is shared with the Manoir St-Castin.

LE CHATEAU MONTEBELLO: Set in 105 square miles of forest, lake and stream, 80 miles from Montreal and 40 miles from Ottawa, on Highway 8. Was formerly the world-famous Seignory Club, host to kings and princes. It's a fine 6,110-yard (par-70) golf course. Green fees: \$8 during the week; \$9 on weekends.

ONTARIO

Ontario has a wealth of attractions awaiting holiday visitors: the roaring grandeur of Niagara Falls, the Niagara Peninsula in blossom time, the excitement of Toronto, the bicultural atmosphere of the Ottawa-Hull national capital area, the myriad lakes of the Muskoka region. Each area is laced with fine golf courses.

WINDERMERE HOUSE: On eastern shore of Lake Rosseau, is well-known for its excellent food and hospitality. Easily reached by car, train or air. Recreation facilities include golf, swimming, water skiing, tennis, cruises, dancing, movies. The 6,193-yard golf course has holes with colorful and descriptive names such as "Long Reach," "Hooker's Folly" and "Faraway." Water comes into play on six holes. Caddies available at \$2 per day, hand carts at \$1 a day. Special golf parties from June 14th to 30th and September 6th to 25th at \$117-\$145 per person (shared accommodation) for seven days; includes meals, golf fees, films, tournaments, cruises. In July and August golf parties are available at \$118-\$185 for five days.

ELGIN HOUSE: At Port Carling, across the lake from Windermere. A nine-hole (par-32) course of 2,400 yards; well-trapped, with tricky greens. Green fees: \$3.50. The course is just a pitch from all lodges. There is swimming, water skiing, entertainment. Guests may enjoy all activities of sister vacation hotel, the Delawana Inn at Honey Harbour. A special golf package is available at \$138-\$162 per person (shared), and includes seven days with all meals, green fees and entertainment.

MUSKOKA SANDS INN: At Gravenhurst, 100 miles from Toronto. Features international cuisine, sand beach, indoor pool, tennis, riding, supervised playground. The nine-hole golf course is 3,000 yards long (par-35). Green fees: \$4 or \$20 per week. The main lodge is a startling arrangement of glass and timber overlooking Lake Muskoka from a high bluff. Accommodations are from \$99 per week, double, A.P.

BANGOR LODGE: Built on the shores of Lake Muskoka, four miles west of Bracebridge, is reached by Highway 118 and Golden Beach Road. The nine-hole course is 2,600 yards long (par-34). There is a guest tournament every week. Lodge guests play for \$10 per

continued

"No designer
could have
more varied or
lavish material
to work with"



So said the late, great, golf course architect Herbert Strong, after he created the famous Manoir Richelieu links at Murray Bay.

Carving the magnificent course out of the forest overlooking the St. Lawrence river, Strong called on his great skill and experience to "build this natural beauty into every possible feature of the play".

That he succeeded is history. The beauty and challenge of the Manoir Richelieu golf course is known across a continent. So is the superb cuisine and luxury of one of Canada's great resort hotels. Including an Olympic-size pool, trap and skeet shooting, tennis, fishing, badminton and riding. Family cottages up to six bedrooms. Regular accommodation from \$24 per person, including meals.

Convenient

Quebecair

service to Murray Bay airport from Montreal. By road, the Manoir is 90 miles along the scenic north shore of the St. Lawrence River from Quebec City.

Join us for Golf Week (July 2-9), on the Labour Day golf weekend (Sept. 1-3), or anytime your tired soul craves champagne air.

MANOIR **Richelieu**
MURRAY BAY, P.Q.

Reserve now. Call Collect
Montreal office 514-849-3521
or Hotel office 418-665-3701

Telex: 01-13529 • TWX 610 572-5803

week, or \$2 per day. Nonguests pay \$2 per day with restricted hours during the season. Hand carts and clubs available for rent. Season: June 24th to September 5th. Complete resort facilities. Rates are \$85-\$150 per week, double occupancy, in season; and \$85-\$124.50 weekly, double, off-season.

CLEVELANDS HOUSE: On western shore of Lake Rosseau, nine miles from Port Carling via Highway 632. Has a par-33 nine-hole golf course measuring 2,355 yards. Green fees: \$2.50 per day or \$14 per week. There is a weekly ticket at \$22 that provides golf for parents and two children. Rental equipment available. Four main buildings and 18 cottages. Rates: \$135-\$147 per person per week, twin beds and private bath; \$129-\$141 per person per week, double bed and private bath; \$162 per person per week for two in the cottages. Season: May 24th to end of October. Dinosaur Park, where you see life-size replicas of prehistoric monsters, is 18 miles away.

PAIGNTON HOUSE: On Lake Rosseau at Minett, 135 miles north of Toronto and 29 miles from Bracebridge via Highways 632 and 118. The nine-hole golf course is tricky. Green fees: \$2.50, weekly tickets \$10 for guests and \$12 for nonguests. Carts and clubs may be rented by day or week. Lodge features two professional shows per week. Complete resort facilities. Rates during July and August are from \$92-\$146 per person per week, double occupancy.

STRATHCONA GC: Five miles east of Huntsville via Highway 60 and Canal Road. An 18-hole "executive" course of 4,348 yards (par-62). Water comes into play on three holes of this well-bunkered course, built on the north shore of Lake Peninsula. Green fees: \$3.50 for 18 holes, \$2.50 for nine, \$2 for juniors. There are packages of 20 tickets for \$50, and seasonal rates from \$90 to \$130. Caddies, carts, electric cars and club rentals available. Docking facilities for players arriving by boat. Several lodges in the area offer golf packages in conjunction with Strathcona, and special rates available. Season: May 1st to the end of October. The area has a full range of recreational facilities, including Hidden Valley chairlift for sight-seeing.

BRIARS INN AND CC: One mile east of Jackson's Point via Lakeshore Road, on the south shore of Lake Simcoe. The nine-hole course is 3,000 yards long (par-

36). Guests play for \$3.50; \$4 weekends and holidays. Daily rate for juniors. The lodge sits on the lakefront. Under the American Plan, prices range from \$112.50-\$165 per person per week, from rooms to suites with private living rooms. Season: early May to late October. Complete resort facilities.

THE BAY MOTOR INN: At Owen Sound, two hours north of Toronto, sits in a beautiful valley overlooking Georgian Bay with its 30,000 islands. The 18-hole golf course is designed for beginners and children, but has three sets of tees to satisfy all skills. Full resort facilities and a Finnish steam bath. Rates are from \$13 per person, double occupancy.

MINAKI LODGE RESORT: Owned by the Canadian National Railway. Is situated in northwestern Ontario's Lake of the Woods District, 36 miles north of Kenora and 150 highway miles northeast of Winnipeg. Paved highways lead from all major points to Minaki; from Kenora by Highways 17, 641 and 596. The village of Minaki is on the main line of the CNR, and there are two trains east and west daily; the lodge is a half mile from the station, with transportation provided. There are sea-plane facilities at the lodge, and a 3,000-foot airstrip three miles away, with courtesy car to lodge. All airlines connect to Winnipeg.

The golf course is a nine-hole layout, playing at 2,560 yards (par-33). Green fees: \$3 for guests. Clubs, carts and electric cars are available.

The resort offers miles of sparkling lakes, rock and forest. You may stay in the Grand Lodge, Chalet, Motor Lodge, Lakeshore Cottages or The Point. Rates (modified American Plan) quoted on basis of two persons occupying twin or double bedroom: Main Lodge and Cottages, \$25 daily per person; Chalet, \$21; Motor Lodge, \$21; children under 12 sharing parents' room, half price; Governor's Cabin (six persons minimum), \$21 per person; single occupancy in any room, \$5 per day extra. All include breakfast and dinner. Rates at The Point: Lodge, \$8.50 per person, per day, double occupancy; each additional person, \$6.50; housekeeping cottages start at \$8.50 per person, per day; children under 12, half price; children under 3, no charge. On all accommodations, \$50 deposit required with reservation. Season: June to mid-September. Complete resort facilities.

QUEENSTON GC: At Queenston, is very near Niagara Falls via scenic River Road and Concession No. 2. The nine-hole course is 2,910 yards long (par-35). Green fees: \$2 weekdays and Saturdays, \$3 Sundays and holidays. Carts and clubs available. The clubhouse offers a view of Niagara Escarpment.

Other courses of interest in Ontario include Fanshawe, at Fanshawe Lake; Glen Lawrence G & CC, near Kingston; Rockway G & CC, in Kitchener; Strathcona, at Thunder Bay; Thames Valley, near London; Upper Canada GC, between Brockville and Cornwall; and Whirlpool GC, between Niagara Falls and Queenston.

MIDWEST

MANITOBA

Manitoba, entrance to the vast Canadian prairie region, has many attractions for the golfing tourist: Churchill, the country's most northerly deep-sea port, where Eskimo life can be glimpsed, or whales watched at play; the 24-foot statue of Flintabatty Flonatin, designed by Al Capp, at Flin Flon; Fort Garry, the only stone fort of the fur-trade era still intact in North America; Winnipeg, a city surrounded by a "moat" to prevent flooding; and more than 80 golf courses.

FALCON BEACH GC: At Falcon Lake in Whiteshell Provincial Park, 90 miles east of Winnipeg on the Trans-Canada Highway. Lengthwise (7,020 yards, par-72) it's a bargain with green fees of \$2; \$3 weekends and holidays. Falcon Lake is one of Canada's most modern recreational townsites developments. Accommodations at the Falcon Motor Hotel are \$8.50 to \$16.50 per day.

PHANTOM LAKE GC: One mile south of Flin Flon, is built on muskeg and around rocky outcrops of the great Precambrian Shield. It is a nine-hole (par-36) layout of 3,122 yards and provides rental equipment. In addition to the natural hazards encountered on the course, the golfer must be alert to ball-hawking ravens and foxes.

WASAGAMING GC: At Clear Lake in Riding Mountain National Park, 125 miles north of the border via Highway 10, 175 miles from Winnipeg, via Highways 1, 4 and 10. The 6,272-yard (par-72) layout is home of the annual Grey Owl Tournament. Green fees: \$4. The clubhouse is open from 6 A.M. to dusk. Accommodations at the Thunderbird Bungalows, from May 10th to Sep-

tember 30th, are \$12-\$20 per day or \$79-\$135 per week. Other attractions are riding, hiking, tennis, lawn-bowling and fishing.

STEINBACH FLY-IN GC: On Highway 12, 40 miles southeast of Winnipeg, has an adjacent lighted landing strip for light aircraft. The nine-hole course measures 3,340 yards (par-36). Green fees: \$1.50. Rental equipment is available.

TRANSCONA: On Highway 15 at Ples-sis Road. Has a 5,966-yard (par-70) layout. Green fees: \$2; \$3 weekends and holidays. Equipment rentals available.

ROSSMERE G & CC: At East Kildonan. A 6,250-yard (par-70) layout that once hosted the Canadian Open. Green fees: \$3 until 3 P.M. and \$4 after; weekends and holidays, \$5 before 3 P.M. and \$4 after. Rental equipment available. The clubhouse has a dining room and lounge.

SASKATCHEWAN

Land of the "big sky," Saskatchewan is the heart of Canada's wheat-growing industry. The province is intimately linked with the exploits of the Northwest Mounted Police, or "Mounties," and many museums trace the history of the force. Buffalo graze in a fenced pasture beside the highway in the Wild Animal Park at Moose Jaw.

WASKESIEU LAKE GC: (pronounced Was-ki-soo): On the east shore of Was-kesieu Lake in Prince Albert National Park. Lies 60 miles north of Prince Albert, via Highway 2. Most visitors are impressed by the beauty of this scenic 6,059-yard (par-70) course. The 625-yard eighth is known as Mae West because of the identical twin contoured hills guarding the entrance to the green.

Early-morning players are often startled to see deer or moose sharing the fairway with them. Green fees: \$4 per day or \$20 per week. Clubs and hand carts for rent.

Accommodations in motels and cabins range from \$6 to \$15. There are also campgrounds, with sites for 120 trailers and 60 tents. All sports activities available. Entrance to the park is 25 cents per day or \$1 for the season.

KENOSEE LAKE GC: In Moose Mountain Provincial Park, situated north of Carlyle, via Highway 9. A 5,364-yard (par-69) layout. It is undulating, with well-treed, narrow fairways. Green fees: \$2. Reserve in advance for week-

FOR A SWINGING SUMMER

in the heart of the Laurentian mountains — just 74 miles north of Montreal.

Gourmet meals . . . gala evenings.

Learn-to-Golf Weeks . . .

Tennis . . . Swimming . . .

Riding . . . Playground &

Monitors . . . and more.

Write for our free, full colour brochure and rate card.

NEW GRAY ROCKS INN ACQUISITION

Le Chateau

only 3/4 of a mile from the Inn
with all Gray Rocks features



Tel: 819, 425-2771

HOTEL OWNED

18-hole golf course

Riding stables and airport.

Bowling Green.

All water sports.

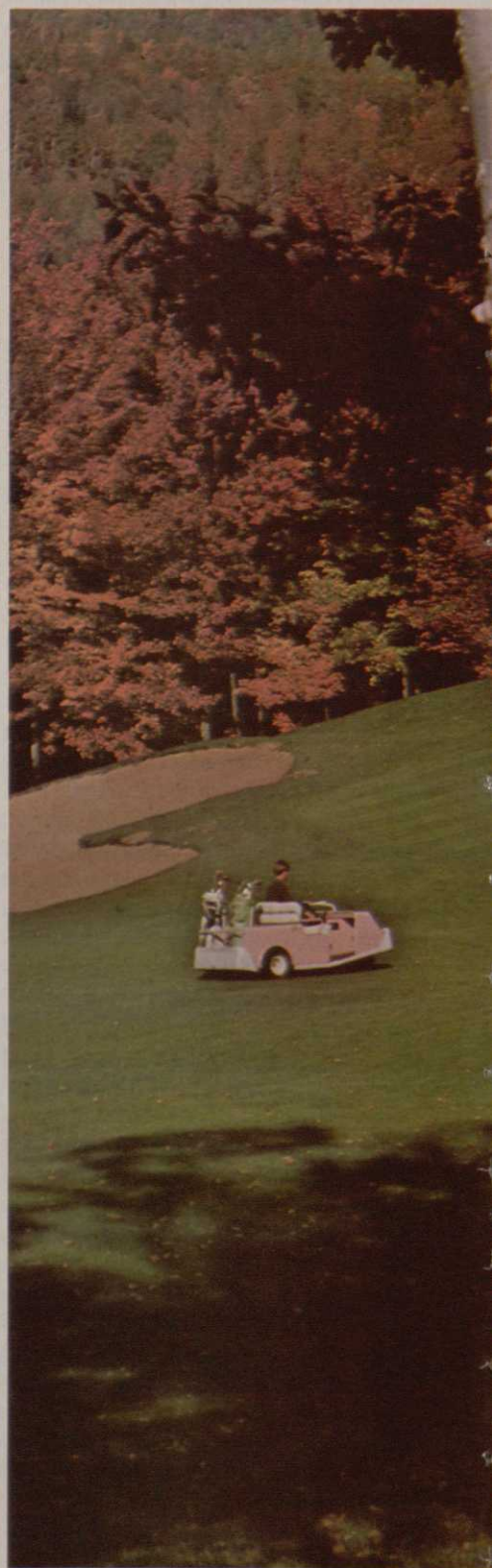
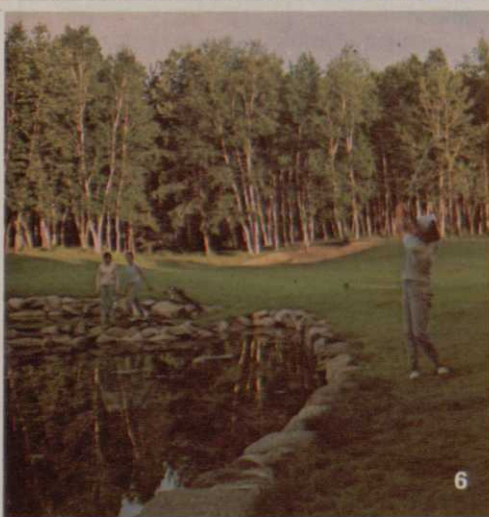
GRAY ROCKS INN

ST. JOVITE - MT. TREMBLANT
P.O. BOX 1000, ST. JOVITE, P.Q., CANADA

TRAVELER'S INFORMATION

Month	Weather	Suggested Clothing And Remarks
May	Warmer in daytime, cool at night	Medium-weight and summer apparel. Enjoyable period for spring travel. The country is green and spring flowers are in bloom by May 15.
June	Warm	Summer clothing with some medium-weight wear as a precaution against cool nights.
July & August	Normally warmest months of year	Summer clothing. Ideal for summer travel. All summer outdoor activities.
September	Days warm, evenings cool	Summer clothing along with some medium weight wear. Ideal for autumn travel. In most areas, foliage takes on fall coloring around Sept. 20.
October	Cool	Medium-weight apparel including top-coat. Excellent weather for autumn vacation. Leaves and other foliage in full autumn color during early part of this month. Many wonderful opportunities for color photography enthusiasts.

continued





ends and holidays. Family rate from Monday through Friday (for 13 years and up) is \$10; twilight rate (after 8 P.M.) is \$1. Hand carts and clubs rent for 50 cents.

The course is about one and a half miles from the campsite area of Fish Creek. Here there are 243 sites; the rates are \$1-\$2 per day with electricity. The park has a recreational complex. Kenossee Lake is the center for water activities.

Rates at the Park Motel's 14 rooms are \$10-\$16 per night, double occupancy; 18 cabin units are \$11-14, double; 10 units are \$9-\$11, double. The Chalet has accommodations of \$8-\$10 per night, double, and Clark's Resort has rates of \$7.50-\$15.

MADGE LAKE GC: In Duck Mountain Provincial Park, 15 miles east of Kamsack, Alberta, on the Saskatchewan-Alberta border; take Highway 57 from Kamsack. The course is 5,544 yards long (par-68). Heavily wooded, it has several natural water hazards. Green fees: \$2; twilight rates (after 8 P.M.), \$1; season rates, \$32.50 for men and \$22 for women; juniors, \$19.50; weekly rates for the family are \$10. Hand carts and clubs rent for \$1.

The park has tent and trailer campsites for \$1 and \$2 per day. There are also modern rental cabins. One-bedroom cabins rent for \$11 per day for two people, with \$1.50 extra for each additional person. Two-bedroom cabins are \$14 per day for four, and \$1.50 for each extra person. The Ministik Inn has cabins at \$6-\$12. Car entrance to the park is \$1 per day or \$4 for the season.

CYPRESS HILLS GC: Located in Cypress Hills Provincial Park in southwestern Saskatchewan, 20 miles south

Clockwise: 1) The Algonquin Hotel, New Brunswick; 2) Le Chantecler GC, Quebec; 3) GC at Niagara Falls, Ontario; 4) Queen Elizabeth Park, British Columbia; 5) Green Gables GC, Prince Edward Island; 6) Waskesieu Lake GC, Prince Albert Natl. Park, Saskatchewan.

continued

of Maple Creek via Highway 21. The nine-hole course has sand greens and well-treed fairways. Green fees: \$1; a \$10 family rate available Tuesday through Friday. Hand carts and clubs rent for 50 cents. The park has 196 campsites, at \$1 and \$2 per night. There are also 43 cabins: one bedroom is \$11 per day for two, plus \$1.50 per day for each additional person; two-bedroom cabins cost \$14 per day, under the same arrangement. Other resort facilities are available. Car entry to the park is \$1 per day or \$4 per season.

There are eight golf courses at Regina, five at Saskatoon and other 18-hole layouts at Estevan, Melfort, Moose Jaw, Prince Albert, Swift Current and Yorkton.

PACIFIC REGION **ALBERTA**

The Calgary Stampede, called "the greatest outdoor show on earth"; snowmobile rides on the vast Columbia Icefields; a breathtaking cable car ride up Mount Norquay; Banff Indian Days Celebration; the view from the top of the 626-foot Calgary Tower in Calgary;

the weird rock formations of the Badlands; the Dinosaur Trail; Klondike Days in Edmonton; the huge buffalo herd in Elk Island National Park; the magnificence of the Rockies. This is Alberta . . . plus, of course, the incomparable resorts at Banff and Jasper, and their superb golf courses.

BANFF SPRINGS HOTEL AND GC: 80 miles from Calgary, is located at the junction of the Bow and the Spray Rivers, in a circle of mountains. Easily reached by the Trans-Canada Highway; by bus, train, or by air from Calgary. The golf course, almost a mile above sea level, is 6,729 yards of scenic thrills and golf challenges. Towering mountains around the course often cause golfers to underestimate distances. The seventh hole is carved from the face of Mount Rundle, and tons of rock were quarried for this 513-yard par-five called "Gibraltar." There is much wildlife on the course. Banff National Park is a game preserve, and animals are fearless and quite tame. Green fees: \$7.50; \$8 weekends.

Accommodation rates at the 600-room hotel run from \$25 for single occupancy, and \$30 for double, on the European Plan. Season is June to September. Facilities include swimming in fresh water pools maintained at 74 to 78 degrees.

JASPER PARK LODGE AND GC: Is located 177 miles north of Banff and is easily reached by road, train, bus or air from Edmonton. It is also accessible by the spectacular Icefield Highway. Jasper is surrounded by mountain ranges, and the 6,455-yard golf course was hewn out of the slopes of the Rockies. In 1914, Sir Arthur Conan Doyle, creator of Sherlock Holmes, tried his hand at creating a golf course here, but Stanley Thompson planned and supervised the construction of the course in 1923-24. Train-loads of soil were imported, as the rock and bush of the area supported very little grass. Each bunker has a definite design—a rose, a footprint, an artist's palette. The water supply for the fairways, tees and greens is obtained by means of a gravity system which also supplies the water for the lodge. At the ninth hole you drive straight for the 9,000-foot pinnacle of Pyramid Mountain. The green and bunkers of the ninth were originally shaped in the form of a huge, recumbent female, but objections

were raised on the grounds that this design would put male golfers off their approaches, so the contours have been flattened out. But the hole retains its name—Cleopatra. Wild animals frequent the course. A bull moose once took over the water hole on the 10th fairway, and golfers had to shoot over him for two months. Sometimes bears squat on the benches and watch golfers tee off.

The course is the setting for the annual Totem Pole Tournament for amateurs, begun in 1929. The trophy stands more than two feet high and the pole itself is cast in silver. Bing Crosby won the tourney in 1947. Green fees: \$8; \$10 weekends.

Accommodation is from \$27.50, shared occupancy. Facilities include tennis, swimming, riding, hiking, boating, nightly entertainment.

WATERTON LAKES NATIONAL PARK GC: About one mile from the Waterton Park Townsite, situated in the extreme southwestern portion of Alberta, 160 miles from Calgary via Highways 2, 3 and 6; and 72 miles southwest of Lethbridge on Highway 5. In summer, buses run daily from these cities to the park, and Lethbridge is served by Air Canada. The par-71 course is 6,103 yards long and very hilly. The course is well-treed and provides beautiful vistas with the Rockies as background. Green fees: \$4; \$20 for weekly ticket. Clubs and hand carts available for rental. Electric cars are \$8 per round. Season: May 15th to September 30th.

The townsite at the northern end of Upper Waterton Lake has recreational facilities, and at the edge of town is Cameron Falls and an enclosure containing a buffalo herd. Saddle horses available for exploring the mountainous terrain. The lake has boat launch ramps and docking facilities.

The park has 375 campsites at four locations, the main one in the townsite. Costs are \$1.50 for unserviced sites and \$2.50 for sites with water. There are good accommodations at the Kootenai Motel, Bayshore Motel, Crandell Lodge Motel, Emerald Bay Motel, Kilmorey Motor Lodge, Lakeshore Chalets, Ponderosa Motel, Stanley Hotel and Cottages, Waterton Auto Bungalows and Wildflower Motel. Rates run from \$5 single to \$30 per day (suite) for four. The season gen-



Aerial view of the city of Winnipeg, the capital of the province of Manitoba. Population is 557,000.

erally runs from May 1st to Oct. 1st.

There are many other good courses throughout the province, with a large number in the Calgary and Edmonton areas.

BRITISH COLUMBIA

Strange as it may seem, there is a place in Canada where golf is played all year. It's beautiful British Columbia, where some of the country's finest courses rarely see snow, and the golfer has a 12-month season.

Here is golf of every description—from the courses on Vancouver Island to the forested layouts of the Vancouver area itself (Capilano, Marine Drive, Point Grey), to Harrison Hot Springs. And all around is the towering grandeur of the Canadian Rockies.

THE HARRISON HOTEL: Now owned by the House of Seagram, is located at Harrison Hot Springs, 75 miles east of Vancouver via Trans-Canada Highway 401 (BC No. 1) and Highway 9. It lies on a 700-acre site overlooking the 46-mile long, glacier-filled Lake Harrison. The nine-hole golf course is two miles from the hotel. Transportation available by prior arrangement. The 3,425-yard layout is comparatively flat, but with tricky greens. Hand carts rent at 75 cents; electric cars at \$4.50 for nine holes and \$5 for 18. Green fees: \$3 for nine, and \$5 for 18 holes.

With 285 rooms, hotel offers a wide variety of accommodations. A mid-week package includes three nights, arriving Sunday, Monday or Tuesday, and one round of golf for \$55 per person, double occupancy (\$70 single). A honeymoon plan provides three nights and one round for \$100. Both plans include three breakfasts and two dinners.

RADIUM HOT SPRINGS LODGE AND GC: 3,400 feet above sea level, is 90 miles south of Cranbrook via Highway 93-95, and 85 miles southwest of Banff via Highways 1 and 93. The golf course overlooks the spectacular Columbia Valley and is 3½ miles southwest of the Hot Springs. It is a 2,800-yard, nine-hole layout. The longest hole is 525 yards. The season runs from Easter until late in the fall. Green fees: \$2.50 for nine holes, \$4 for the day, or \$17 for a week. Hand carts rent for 50 cents for nine holes, electric cars for \$4 for nine and \$7 for 18. Club rentals available. Rates (June 1-Sept. 30) are \$17-\$22 for two per day, and \$1.50-\$2.50 per day for

each additional person. Single rate is one dollar less.

QUALICUM BEACH GC: On Vancouver Island, 28 miles north of Nanaimo via Highway 19, and just across the street from the George Inn. It is reached from the mainland by two ferryboats from Vancouver to Nanaimo. There is train and bus service from Victoria on the southern tip of the island. The seaside nine-hole golf course is 2,760 yards long. Green fees: \$2.50 for nine, \$3.50 for 18 and \$1.50 for juniors. Hand carts rent for 50 cents per round and clubs for \$1.50; electric cars cost \$4 for nine and \$6 for 18.

The English Tudor-style George Inn overlooks the golf course and the sea and is noted for its excellent cuisine. It offers Finnish sauna baths, heated indoor pool opening onto a landscaped patio, and other facilities.

GLEN MEADOWS G & CC: 18 miles from Victoria on Vancouver Island, is reached by Washington State Ferries into Sydney, or B.C. Ferries that run every hour in summer. The course is a 7,014-yarder (par-72). It has over 40

traps and five water hazards. There is a variety of accommodations in nearby hotels. Attractions in the area include undersea gardens and Madame Tussaud's Waxworks.

VICTORIA GC: Jutting into Oak Bay, is the oldest in the province (1894). It is a par-69, at 5,950 yards, and exposes players to the challenging winds that gust across the Strait of Juan de Fuca. It is four miles from the center of Victoria. Green fees: \$7; \$10 weekends.

There are other courses in the Vancouver and Victoria areas.

OTHER AREAS

There are many golf courses in more remote area of Canada that are well worth a visit by the ardent player. Newfoundland and Labrador have very fine courses plus other attractions unique to their parts of the country.

In Yellowknife, in the Northwest Territories, there is the Midnight Golf Tournament in which participants play the first nine before midnight, partake of refreshments until 2 A.M. and then play the second nine—finishing about 6 or 7 A.M. □



At Jasper Park Lodge every hole is lined up with a mountain peak.



So knowing where you're going is easy. It's getting there that can make strong men weep! Imagine a quiet valley in the Canadian Rockies. Clear, clean air. Elegant chalets set among tall pines. Superb food. And a championship course. What more could any golfer want? Special April/May and Sept./Oct. rate \$35. per day (minimum 3 days). Includes accommodation, breakfast, dinner and green fees. Come by train, air or auto. For the golfing vacation of your life write to Archie Grant, Golf Reservations, Jasper Park Lodge, Jasper, Alberta, Canada.

CN hotels

