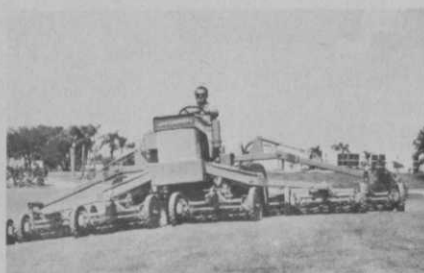




VICTOR GOLF COMPANY, PGA Div., introduces Par Excellence golf clubs for women. The men's version was introduced earlier this year. The clubs feature more loft than standard women's clubs to help get the ball up into the air quicker and easier. The woods come in a 1-3-5-7- set with a royal purple finish and white epoxy insert. The length and lie of the Lady Par Excellence are standard. The clubs feature a special women's model shaft, which has the smallest diameter of any ladies' shaft on the market, according to the company. This diameter encourages greater flexing action without increasing the weight of the clubhead. The over-all weight of the clubs is less than those of standard sets, according to the company. Demonstrator sets of ladies' clubs are available to golf professionals who purchase the clubs. This permits professionals to allow female golfers an opportunity to try the clubs.

Circle No. 101 on reader service card

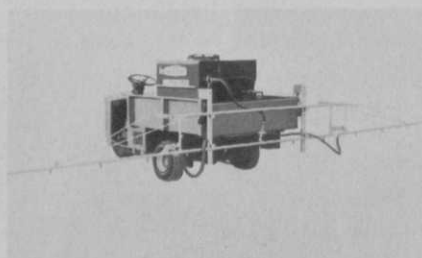


JACOBSEN MFG. COMPANY introduces a nine-gang fairway mower with its F20 turf tractor. The unit is capable of a 19-foot cutting width and is suited for road travel between



job sites. The mower units are hydraulically lifted and are self-contained, so they can be deployed in a variety of combinations to meet different mowing situations. The F20 is powered by a 68 hp, gasoline, heavy-duty industrial engine with four speed transmission. The tractor can turn within a radius of nine feet. An adjustable spring loaded cushion seat and back rest compensate for height and weight of the operator. As a safety measure, engine speed is controlled by both hand and foot throttles, with an override of the hand control by the foot pedal.

Circle No. 102 on reader service card



JOHN BEAN DIV., FMC, introduces two new lightweight and compact Turfkeeper golf course sprayers. The Model MF-11-G is a PTO model for mounting on a golf course utility vehicle equipped with PTO. The 100-gallon capacity sprayer applies three to five gallons per thousand square feet. Once the forward speed and application rate is determined changes in rpm's are automatically maintained at a constant application rate. The Model MF-100-GE is recommended for utility vehicles without PTO. It delivers up to 60 psi for full spray coverage. Both units are equipped with lightweight, three-section, 15-foot beams with five-foot foldaway wings and 19 nozzles 10 inches apart for added coverage of fairways.

Circle No. 103 on reader service card



BEN HOGAN COMPANY is reintroducing a new six-wood to give golfers a more than adequate utility club for loft and distance. The woods are available to match current Ben Hogan wood models. Hogan is also introducing a women's golf glove, with a Velcro fastener and a detachable ball marker, which conveniently snaps onto the side of the glove. Hogan is also introducing two putter models. The model 156 is a super-sized mallet with an offset neck and black sight line across the top of a triangular aluminum head. The model 157 is a "fat blade" semi-mallet with an offset neck and a black sight line.

Circle No. 104 on reader service card

FIRL INDUSTRIES, INC., offers free plans and material lists for easy and inexpensive construction of a six-foot by eight-foot golf shelter. The plans are available without obligation from Firl, manufacturers of Weblon Drop Curtains. The drop curtains give extra protection and relief from sun, winds and rain and are available in a wide variety of colors.

Circle No. 105 on reader service card

MALLINCKRODT CHEMICAL WORKS introduces Trex-San Bent broad-spectrum broadleaf herbicide, which kills more than 35 weeds, from clover to dandelion. Trex-San Bent is fully registered and labeled for use on practically all fine turfgrasses, including bentgrasses. According to the company, the new herbicide features a built-in margin of error, so accidental overdoses, even on fine bent putting greens, will not cause adverse affects on the bentgrasses. Trex-San Bent is available in one and five-gallon containers. A single gallon, diluted in 30 to 50 gallons of water, treats about three acres.

Circle No. 106 on reader service card