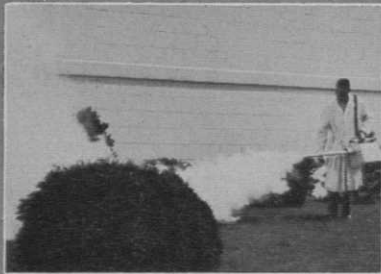


Now you can effectively control

**MOSQUITOES**

and other flying and crawling insects around your clubhouse and inside



WITH **HUB STATES**  
ECONOMICAL

**CYTHION**

**FOGGING CONCENTRATE**

Hub States CYTHION FOGGING CONCENTRATE is unequalled for effectiveness in killing mosquitoes, flies, fleas, gnats, chiggers, mites, moths, wasps, hornets, ROACHES of all species (even resistant strains), ants, silverfish, beetles, spiders, crickets, and other insects . . . yet it is safe for use around foods, facilities, plants and animals. Low in cost. Just mix 1 gallon of Hub States CYTHION Fogging Concentrate with 25 gallons of No. 2 fuel oil. Leaves no stains; low odor.

1 gal. can. . . \$12.90 per gal.  
5-gal. pail. . . 11.93 per gal.

For Quick, Complete Coverage

**DRY  
FOG  
SR.**



A powerful professional fogger that's small enough to put in a car trunk and easy to carry. Blankets thousands of cubic feet of area in minutes with a fine dry fog. Billions of microscopic droplets of lethal Malathion insecticide penetrate into every crack and crevice in a building, killing even the hiding insects. Output up to 7 1/2 gallons per hour. Can be adjusted from a fine to a coarse fog. No special training required to operate it. \$372.00.



**HUB STATES**  
Chemical & Equipment Corp.  
2022 N. Illinois St.  
Indianapolis, Ind. 46202

**MAIL YOUR ORDER NOW**

Send me.....  
Firm.....  
Address.....  
City..... State.....  
Signed..... Title.....

For more information circle number 132 on card

## Fitting clubs the 'mod' way

*New machine not only aids the pro in teaching, it helps him determine the correct club specifications for the pupil*

The golf pro may just have found a friend for life. The owner of a new machine called the Swing Recorder, already patented, claims to have put the tricky and complicated question of club fitting on a reliable basis.

The pro merely follows the readings of computerized charts, called Photoanalytical Club Fitting Analysis Charts. These charts are encased in plastic and bolted to the machine and enable him to record the results of a golfer's performance with a variety of clubs as measured by photoanalytical polaroid shots.

The golfer's performance as to his impact speed, clubshaft flex and loft are carefully recorded on the charts until the proper combination gives him the optimum trajectory. He thus has in his hands an exact and clearly understandable series of records of what his best fitted club will do for him on the average. The machine will also help to determine which club is best for the golfer.

The device is electric and works best indoors. It is 18 inches wide, nine inches deep, 40 inches high and weighs 65 lbs. The pro can also use the machine to give his lessons.

One example of its use in teaching is illustrated in figure 1. The action of the golfer can be stopped motionless at any point and can be viewed by the student, with his instructor interpreting his action.

All the theories developed and later embodied in the charts were actually tested on the driving range

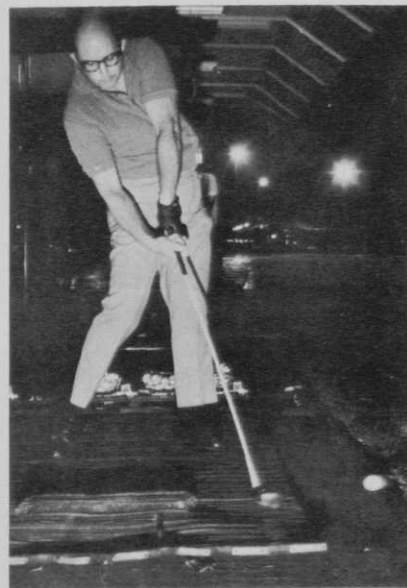


Figure 1. The sensitivity and accuracy of machine enables the most critical action of the golfer to be stopped and viewed. Clubhead speed above was 88 mph; carry 180 yards.

and were very accurate in their predictions, it is reported. Golfers, from the average to the touring pro, were subjected to these methods and their performances were accurately measured while they hit shots on the range. These shots compared with the predicted results.

The machine's inventor is E.J. Betinis. He possesses a background in mathematical physics and computer analysis and has played golf for about 25 years. □