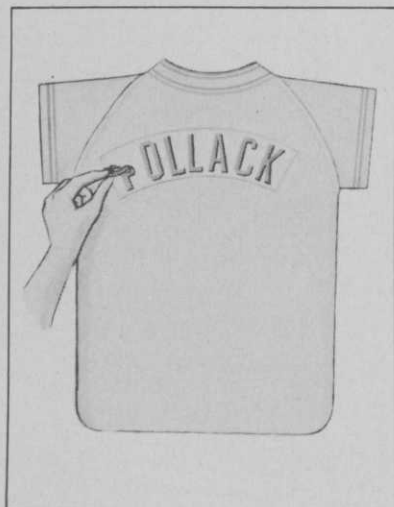


New products



Bunton Company, Inc. has introduced a new heavy-duty rotary mower. Model lines range from 3.5 to 6 hp and come with an optional 10" wheel kit for rough terrain. All models are made with heavy-gauge reinforced steel frames and have a five quart fuel tank and adjustable handles that can be offset to either side for trimming along walls or other structures.

For more information circle number 101 on card



Miracle Grip Letters has announced a reusable lettering process that will personalize any athletic equipment. Ideal for caddies or personalizing golf bags. Each letter can be removed and reused again, without sewing, ironing or glueing.

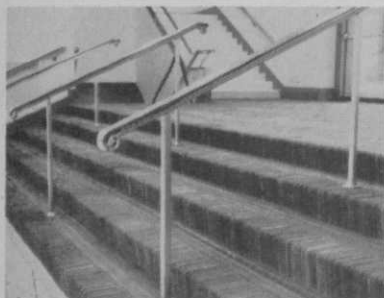
For more information circle number 102 on card



H & H Plastics Mfg. Co., has developed the H & H Dispo-So T-Apron (hostess style). The disposable apron is made of durable embossed H-Lex material, is available in six colors, and may be imprinted.

The company claims the apron is impervious to dirt, grease, stains, and most acids and that no laundering or cleaning is required. *Continued*

For more information circle number 103 on card



**GUARANTEED THREE YEARS AGAINST ALL TRAFFIC!
HANDSOME, LASTING FLOORCOVERING
ECONOMICAL TO INSTALL—MAINTAIN**

FUTURUS GOLF CLUB CARPETILE



Check FUTURUS with ALL others:

- Absolutely SAFE and SKIDPROOF—wet or dry.
- HIGHLY RESISTANT to heavy spike shoe traffic.
- Women's spiked heels DO NOT penetrate its surface.
- NOT AFFECTED by exposure to fresh or salt water.
- EASILY INSTALLED by anyone—Cleans readily.
- Indoors or Outdoors—completely WEATHERPROOF.
- Neutral color tones BLEND with any background.
- STAIRWAYS—Safest, Most Durable of All.

Made from selected nylon cord heavy duty tires—buffed to chenille-like finish. Strips $\frac{3}{8}$ " thick are bound to glasscloth impervious to moisture... then cut to 12" x 12" tiles. Used successfully throughout the country for other recreational and commercial purposes.

For further information, prices—and USER-PROOF of FUTURUS Carpetile service satisfaction—write:

FUTURUS, INC. 1076 West Ninth Street
Upland, California

U. S. Patent No. 3,352,733



USE THIS GANG of PIXTONEs

One tractor and operator pulls three PIXTONEs—triples area covered. Unique revolving arm and rake mechanism pick stone 3/4" to 9" dia., pulverizes, aerates, leaves perfect seedbed. Hundreds in use by landscapers, parks, golf courses, contractors. Write for complete details..

BRIDGEPORT IMPLEMENT WORKS, Inc.
Box 491G Stratford, Conn. 06497
Phone: (203) 378-0060

For more information circle number 152 on card

GOLF

NATION-WIDE DISTRIBUTORS
FOR OVER 30 YEARS
OF
GOLF SHOP-DRIVING RANGE
PAR 3 & MINIATURE COURSE
SUPPLIES

SEND FOR CATALOG:

**NORTHERN
GOLF BALL CO.**
2350 W. ROSCOE ST.
CHICAGO, ILLINOIS 60618

For more information circle number 237 on card

COMPLETE GOLF COURSE CONSTRUCTION

Also rebuild, move tees and greens, install watering systems.



**IBERIA
EARTHMOVING SERVICE, INC.**

IBERIA, OHIO • Ph. Galion, O. 419 468-5454

For more information circle number 185 on card

TROPHIES AT NEW LOW PRICES

Immortalize that
HOLE-IN-ONE.

Mount the real
"HOLE-IN-ONE"
golf ball on gold
claws mounted
on Walnut base
with engraving
plate.

XPW-4-5 \$5.95
Ball not included.



**BIG
PRO
DIS-
COUNTS**

Write today for FREE Colorfully Illustrated Catalog.

THE TROPHY & MEDAL SHOP
4560 N. Western Avenue Chicago, Illinois 60625
Telephone: Area Code 312/271-7600

For more information circle number 203 on card

New products

Continued



Clipper Manufacturing Co., Inc. has announced for its Norton Construction Products Div., a new turbo-blast blower. The Winro blower blows leaves and litter into central piles. It can also dry greens, drives and tennis courts. Other features include 20" rear wheels, dual front swivel casters, controlled air output and folding handles.

For more information circle number 104 on card



Grimco Signs has recently come out with an outdoor sign giving the basic rules for golf car safety. The sign measures 24" x 30", has a baked enamel all weather finish, and can be mounted either on the side of a building or posted near the first tee.

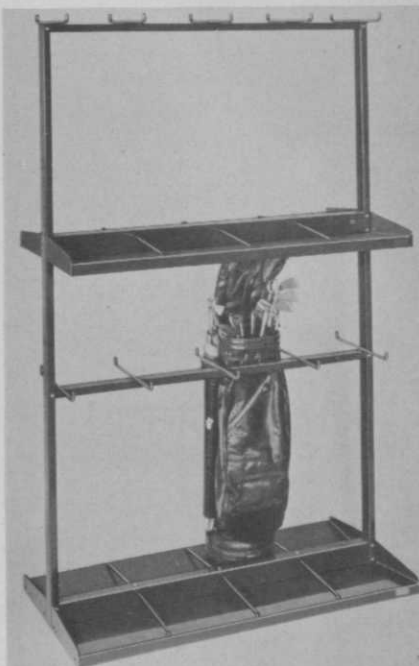
For more information circle number 105 on card

Permagrass, Inc., has made available a new artificial grass bearing the same name. Molded from specially formulated polyethylene, each 12" x 12" square is composed of more than 7,000 life-like green blades. Each square firmly locks together, enabling the customer to cover any size area or shape. Permagrass is vermin and mildew proof, and can be cleaned outdoors by just hosing down with water.

For more information circle number 106 on card

Continued on page 65

**INCREASE EARNINGS,
SERVICE & SPACE**
Remodel your present storage
space, bring your bag racks
up to date
**WITH NEW Stafford
VERTICAL BAG RACKS**



U.S. & CANADIAN PATENTS

Your members will like the extra convenience and care. Your pro shop profits from 40% more space these racks make available.

Double unit shown holds 16 bags, size 2' x 4' x 6'-6" high, gives 12" x 12" space for bags. Single unit holds 8, size 1' x 4' x 6'-6" high. Sturdy steel. Bags set solid on tapered shelves.

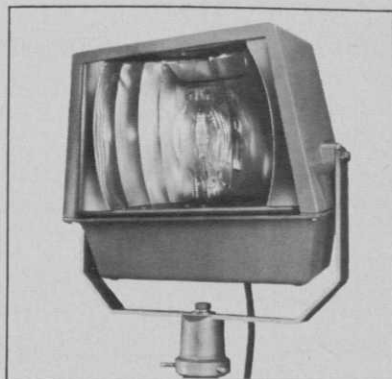
- Wear and tear of golf bags is completely eliminated
- Damp bags dry faster — no mildew
- Provides a neat appearance
- Faster, easier storage
- Easy to install and add more as needed —

Send us your floor measurements, we will plan a layout and quote you — no obligation.

THE A. G. STAFFORD CO.
2000 Allen Ave. S.E. • P. O. Box 287
Canton, Ohio 44701 • 216/453-8431
For more information circle number 160 on card

New products

Continued from page 63



General Telephone & Electronics recently announced for its subsidiary, Sylvania Electric Products, Inc. a new heavy duty floodlight fixture series for use in outdoor areas requiring maximum beam efficiency. The outdoor floodlight series includes two models designed for use with 400 and 1000-watt mercury or Metalarc lamps. Both feature optical designs producing "batwing" type light distribution.

For more information circle number 107 on card



LO-BLO, the Air-Broom...

**SWEEPS UP LEAVES AND LITTER FASTER, BETTER THAN 6 MEN!
SAVES TIME, LABOR, MONEY AND MUSCLE**

The terrific blast of air blows leaves and litter to a central point for gathering or burning. Attachments available for snow removal, blow washing, etc.

There's a size and price to meet every need . . . 4, 6 and 8 hp. models, a 12 hp. self-propelled model and the new 4 Fan Model PTO 30 pictured here.

Send for literature and name of your nearest distributor.

ATWATER STRONG CO., INC. • ATWATER, OHIO 44201
Phone 216/947-2344

For more information circle number 280 on card

Safari
SPECIALISTS IN
**COLD WATER
DRINKING
EQUIPMENT**
GAS-FIRED Drinking Fountains
and Water Coolers
ELECTRIC Drinking Fountains
No Moving Parts to Wear Out...
No Motors to Burn Out!
SAFARI (DEPT. G)
591 N.E. 5th Street, Pompano Beach
Florida 33060
Phone (305) 942-8076

For more information circle number 155 on card

TAT
GOLF COURSE SIGNS
Extremely smart looking signs
with self fastening stakes.
Signs 50c & 75c
Stakes 25c & 30c
Shipped in 24 hours
Write for Free Brochure
TAT GOLF SIGNS
BOX 1, DUNEDIN, FLORIDA 33528

For more information circle number 236 on card



If you haven't thought about specifying plastic pipe for your course's sprinkler system. consider this:

Municipal water systems in all parts of the country are switching to plastic pipe. Because it stands up as well as metal pipe. And installed cost averages 50% less.

A sprinkler system using CRESline PVC Plastic Pipe saves you around half the cost of nearly any other type. It goes in fast and lasts indefinitely. Installation of an 18-hole system takes about 5 weeks, seldom disrupts play.

Hundreds of courses throughout the country are sprinklered the CRESline way (names on re-

quest). It is rustproof, highly resistant to corrosion, available with a full line of fittings—and *guaranteed right* in writing.

Don't let a browned-out course drive your golfers to greener grounds. Look into CRESline PVC Pipe, the logical successor to metal pipe on all counts.

CresLINE PLASTIC PIPE CO., INC.

Member National Golf Foundation

Dept. G-868, 955 Diamond Ave., Evansville, Ind. 47717