

# Swinging around golf

By **HERB GRAFFIS**

News of the Golf World in brief



Lack of jobs as an alibi for race rioting isn't "bought" by golf course superintendents who for years have tried to hire Negroes for work where there is no discrimination between the working people but discrimination between grasses . . . Superintendents at many GCSA national and section meetings have said that golf courses and home lawns and gardens are eager markets for millions of hours of work for those who really want to work.

Superintendents have observed that unemployment and other relief payments, especially in metropolitan areas, have made Negroes reluctant to take golf course and landscaping jobs.

Politicians have given millions of the unemployed attractive deals for avoiding work then profess to wonder why more money is needed for a political campaign against unemployment, lack of opportunity and poverty mainly for votes so politicians won't be unemployed . . . That is one cause of rioting that political investigations won't mention. At least, that's how this columnist sees it.

**Robert F. Smith**, who recently eased up as head of the Victor Comptometer Corp. divisions making Worthington balls, PGA and Burke golf equipment, and was succeeded by **Mark Cox**, died July 29 after a day's hospitalization . . . He'd had a heart attack two years ago but seemed to have recovered completely and was active at work and golf . . . He was at the PGA championship at Columbine energetic, bright and apparently in fine health . . . **Bob Smith** was one

of the best as a golf businessman and a friend and golfing playmate . . . He was born at Providence, R.I., and started in golf with the U.S. Rubber Co., then went with **L. A. Young's** Walter Hagen Golf Co., then with Worthington Ball Co., which was acquired by Victor-Comptometer . . . He is survived by his widow, **Luella** and son **Robert, Jr.**

**John Panton**, who's won Scottish pro championship seven times and was on six Scots teams in the Canada Cup competition, finally knocked off Yank opposition when he defeated **Sam Snead** 3 and 2 at Wallasey (England) Golf Club for the Teacher's World Senior pro title . . . This was the first time a British player had won the World Senior pro even since 1958 when **Norman Sutton** beat **Gene Sarazen**, 2 and 1 . . . In the Ryder Cup matches of 1951, at Pinehurst, **Snead** and **Mangrum** beat **Panton** and **James Adams** 5 and 4 . . . In 1953 at Wentworth, **Snead** and **Mangrum** downed **Panton** and **Eric Brown** 8 and 7, and in 1961 at Royal Lytham and St. Annes **Panton** and **Bernard Hunt** lost, 4 and 3, to **Art Wall** and **Jay Hebert** . . . **Panton** got 69 on the par 72, 6,574-yard course and was 3 up on **Sam** . . . He kept hot and was 5 up after 27.

**Hubby Habjan**, pro at Onwentsia Club, Lake Forest, Ill., ran a full page ad in July Chicago Omnibus, on custom club fitting and manufacture . . . **Hubby's** copy on shaft, weight, loft, lie, grip and balance of swingweight is something to

*continued on page 10*

## Graffis Swing

*continued from page 8*

be studied by young pros and their assistants who aspire to do expert jobs in club fitting . . . Prestige of the exclusive Onwentsia Club where the 1899 National Amateur began a history of national title events, and the craftsmanship of Hubby and his staff and personal fitting have made a substantial business which Habjan has extended by arrangements with pros at other clubs.

**Paul Hicks** now pro at Belwood CC, Natchez, Miss., succeeding **John D. Morgan** who resigned . . . Hicks formerly was at Humphries County CC, Belzoni, Miss. . . . Annual golf day and dinner of Chicago Club Managers Association for their presidents and chairmen at Medinah CC was largest of these deluxe affairs the managers have conducted. . . . It had among its honored guests a number of the Chicago district's athletic celebrities and veteran club manager **Harry Fawcett**, who was honored with a Hospitality Hall of Fame plaque . . . Fawcett, who managed country and city clubs in New York, Illinois, Indiana and Missouri, spoke entertainingly on the prominent clubmen epicures of earlier days and of gastronomic and food service recent developments.

**John Kirkpatrick** now superintendent, Mountain View CC, Corona, Calif. . . . **Harry Obitz**, executive director of golf, Kings Inn, Freeport, Grand Bahamas, says second 18 will be in play in November . . . Construction of the third course has started and a fourth 18 is planned for 1968 . . . Where the energetic Obitz is, golf business grows . . . **Allan M. Cul-lum**, lively pioneer in golf car design and sales development, now is sales consultant for Westinghouse Electric Corp. on its golf vehicles . . . **Michael Mininni** and wife, **June**, are managing Tally Ho CC, (formerly Vernon Hills CC) near Libertyville, Ill. (suburban Chicago) . . . **Martin Schmidt** is superintendent.

Bellevue, Wash., borrowed \$800,000 at net effective interest rate of 5.6 per cent on bonds for its new course . . . **Charles E. Schmidt**, Kenilworth, Ill. winter resident of Boca Raton, Fla., bid \$675,000 for Tamarac GC 18 west of Boca Raton . . . Schmidt owns second mortgage lien on the course . . . Sale was protested by parties claiming Tamarac price was "woefully inadequate." . . . Metro (Miami, Fla., metropolitan area) buys formerly private 18-hole Palmetto CC, paying \$1,288,500 for the 123-acre property . . . Purchase financed by sale of revenue certificates to First National Bank of Miami at 4.3 per cent interest.

**Mrs. Bernadetta Tommarello**, for five years auditor of the Oakmont CC in suburban Pittsburgh, now is manager of the club, succeeding **Jack O'Neill** who went to Chicago GC as manager . . . Brookview CC in suburban Minneapolis has sold its property to village of Golden Valley for \$1,325,000 and is to build 18 and clubhouse at Medina, Minn. which will be opened in 1968.

**Willie Kidd**, for 37 years pro at Interlachen CC (Minneapolis district), died recently at Minneapolis . . . His son, **Willie, Jr.**, succeeded him at Interlachen when Willie, Sr., retired ten years ago . . . Willie, Sr., soon found he couldn't quit work so he became architect of a number of good courses . . . He was a grand all-around pro; one of the last of glorious old Scottish-American pros who built the game in the U.S. . . . He was a fine clubmaker and teacher, a good man to take care of a course, an excellent player and an honored friend of his members . . . He was at Algonquin at St. Louis before he went to Interlachen.

**Jamie Jackson** expects to have the first nine of his Skyview Lakes CC at Lakeland, Fla., open in September . . . Metacony CC, headed by **Lyle Condon** and **Maynard Snyder**, to build 18 near Toledo, Ohio . . . Architect is **Arthur Hills** . . . Orangetown, N.Y. Town Board votes to buy Blue Hills GC 123 acres and adjoining 26 acres for \$1.1

*continued on page 12*

## Graffis Swing

continued from page 10

million, subject to approval by voters' referendum . . . Open now is the rebuilt Alameda, Calif., municipal 18, which is named in honor of the late Earl Fry who was professional at the course since its opening in 1927 until his death in 1964 . . . Desmond Muirhead of Sarazen, Muirhead and Caldwell modernized the original 18 . . . The second 18 is unchanged . . . Muirhead also designed Quail Lake CC near San Jacinto, Calif., owned by Frank and Franklyn Motte, an 18 recently opened.

William Messenger, Camden (N.J.) County parks superintendent, is building the 18-hole course in New Brooklyn Park to open in October, scheduled use of county equipment and labor during otherwise non-working time . . . Over two years he built for \$85,000 a course estimated in 1963 to require \$250,000 . . . The \$85,000 includes waterpipe, topsoil,

### Editor's Note

Due to the sudden death of Miss Barbara Kitson Grau on August 5th, who was the daughter of Dr. and Mrs. Fred V. Grau of College Park, Md., Dr. Grau's column, Grau's Answers to Turf Questions, will not appear this month.

fertilizer, seed, mowers and other equipment and accessories . . . Never a dull moment for county equipment and workment in those two years.

Argument in San Francisco suburban Walnut Creek about whether a local architect or an architect experienced with clubhouses should design the clubhouse for the city's new municipal course . . . Whoever gets the job probably will be driven half-nutty by a city official who doesn't know what it's all about . . . Anyway, that happens in most private club jobs.

Bill Casper was awarded the Radix trophy for 1966 in a ceremony prior to

continued on page 76

# Order Now for Winter Play!

## CUSTOM MADE FOR YOUR COURSE



New, big 18" markers. Unusual and attractive. Die embossed steel with heavy baked enamel finish.

Set of 9.....\$ 51.75

Set of 18..... 103.50

5 1/2 ft. posts.....ea. 1.50

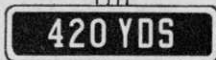


All-in-One. 14" x 7". White letters on green background. Die embossed steel with permanent finish.

Set of 9.....\$44.00

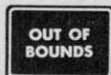
Set of 18..... 88.00

(Price incl. 26" stakes, bolts, nuts.)



Most economical tee markers you can buy! Sturdy 10" x 7" die embossed steel with baked enamel finish. Replacements always in stock.

Hole Numbers....\$1.60 ea.  
Yardage Signs .... 1.50 ea.



10" x 7" White on Green. Speeds play! Protects your course! Only \$1.60 ea.

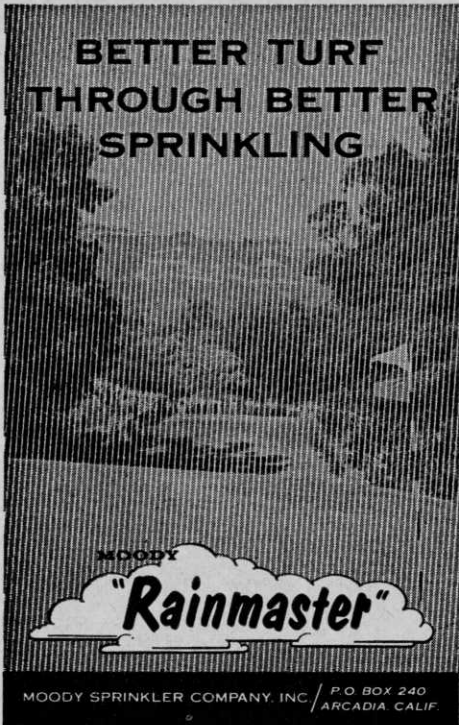
**GRIMCO**  
Signs

since 1875

GOLF catalog  
Write for

141 Hanley Industrial Ct.  
St. Louis, Mo. 63144

## BETTER TURF THROUGH BETTER SPRINKLING



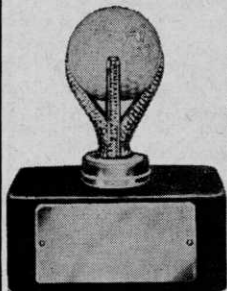
MOODY  
"Rainmaster"

MOODY SPRINKLER COMPANY, INC. / P.O. BOX 240  
ARCADIA, CALIF.

For more information circle number 139 on card

### NEW TROPHIES! NEW LOW PRICES!

#### HOLE-IN-ONE TROPHY



XPW-4-S Hole-in-one  
Sunray Ball Holder &  
Engraving Plate. Genuine  
Walnut Base. Ht.  
4-1/8" — \$5.95 each  
Ball not included

#### WORLD'S TALLEST GOLF TROPHY

For  
High Net,  
High Gross,  
40" TALL.  
With  
Male or  
Female  
Figure  
... \$7.75 list

#### BIG PRO DIS COUNTS

Write today for FREE 32-  
Page Colorfully Illustrated  
Catalog.

THE TROPHY & MEDAL SHOP  
4560 N. Western Avenue Chicago, Ill. 60625  
Telephone: Area Code 312/271-7600

For more information circle number 161 on card

THE WORLD'S TALLEST TROPHY 40" HIGH



## Graffis Swing

continued from page 12

the pro-am that was curtain raiser of the 1967 Western Open at Beverly CC... This trophy, presented by the late Harry E. Radix, is awarded to the pro having the lowest scoring average for 70 or more rounds during a calendar year... Casper's 1966 average was 70.276 for 87 rounds... He also won the Radix trophy in 1960, 1963 and 1965... Ben Hogan won it five times (1940, 1941, 1942, 1946 and 1948)... Snead won it in

## Larchmont AUTOMATIC GOLF COURSE IRRIGATION

Consultants-Designers-Installers

LARCHMONT ENGINEERING  
11 Larchmont Lane  
Lexington, Massachusetts

For more information circle number 136 on card

### IT COSTS YOU NOTHING...

... to ask any Club owning a "SINGLETON" — installed turf irrigation system how they like it!

Without obligation — ask us to name a Club in your vicinity...

For PROFESSIONAL performance in design and installation of sprinkler systems — any turf sprinkler system!

*Singleton Systems, Inc.*

95 Broad Street, New York, New York 10004

Telephone: Area 212-269-4540

— Bonded Contractors —  
TURF IRRIGATION SPECIALISTS

For more information circle number 155 on card

## ARTHUR HILLS

Golf Course Architect

Box 5523

Wernert Station

TOLEDO, OHIO 43613

419-882-6473

For more information circle number 132 on card

1938, 1949, 1950 and 1955 . . . Palmer won it in 1961, 1962 and 1964.

Eighth annual All-America Junior tournament played at Cape Coral (Fla.) and neighboring Fort Myers CC had a field of 350 . . . Boys were in age groups 9-20 and girls, 10-20 . . . USGA Open, Women's Western Open and Ladies PGA championships in 1968 will continue to be 72 holes . . . All other tourneys on LPGA schedule will be 54 holes . . . This means cutting 18 from the St. Petersburg and Dallas annual events.

*continued on next page*



**FAIRWAY  
CONST. CO.**

**EXPERT  
SOIL  
BLENDING**

OLD OR NEW CONSTRUCTION } GREEN FAIRWAY IRRIGATION

TELE: OVERLAND PARK, KAS. NI 8-4900  
PHOENIX, ARIZ. 266-6631

For more information circle number 120 on card

## AUTOMATIC IRRIGATION

*"Set it and Forget it"*



**Waters areas up to 140 x 650 ft. in one setting. Only 10 minutes to set or remove. Pulls itself along thru winding up a steel cable—Water Powered—Shuts off water automatically.**

**\$120 to \$325—write for demo offer**

# TRAVELRAIN®

238 N. Robertson Blvd., Bev. Hills, Cal. Estab. 1955

For more information circle number 162 on card

**Eliminate Field Stone Troubles**

**... use PIXTONE**

The Proven Mechanical Stonepicker.

Picks stone—aerates—pulverizes—sturdier roots.

Contact manufacturer for details and prices.

**BRIDGEPORT IMPLEMENT WORKS, INC.**

P. O. Box 491G—Stratford, Conn. 06497

For more information circle number 109 on card

# NEW Safari



**COLD WATER  
DRINKING  
EQUIPMENT**

Safari has a better way . . . out on the course!

**SAFARI GAS-FIRED DRINKING FOUNTAINS** operate for less than 7 1/2¢ a day.

**SAFARI GAS-FIRED WATER COOLER** gives on the spot, cool, refreshing water whenever desired.

**SAFARI ELECTRIC DRINKING FOUNTAINS** have no moving parts. Allow low cost electric installation.

**SAFARI SANITARY ICED DRINKING FOUNTAINS** save up to 50% on ice and maintenance.


For gas models contact your local LP Gas dealer or . . . write for more and detailed information.

**SAFARI DEPT. GD**  
591 N.E. 5th Street, Pompano Beach, Florida 33060  
U.S. patent 9-6-66 Phone (305) 942-8076

For more information circle number 154 on card

### EVERY PRO NEEDS THIS!

Kenneth Smith's Professional Shop Manual of Instruction



## Golf Club Alterations and Repairs

A Professional Shop Manual of Instruction

# Kenneth Smith

BOX 41, KANSAS CITY, MISSOURI U.S.A.

Tells how to:

- Apply grips
- Change club length
- Remove & replace shafts
- Refinish wood heads
- Alter wood & iron heads
- Many other tips to make better & quicker club repairs.

**SEND ORDER & CHECK TODAY**

Price \$1.30 postpaid

# Kenneth Smith GOLF CLUBS

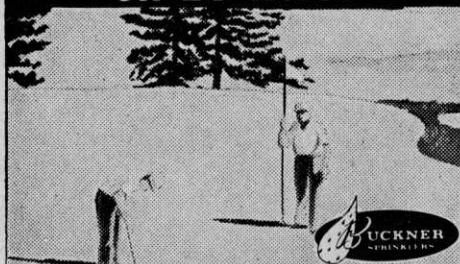
*Hand Made to Fit You*

World's Largest Custom Club Maker

Box 41-GM, Kansas City Mo., U.S.A.

For more information circle number 157 on card

## Play will be normal on 17 holes



...while **KIRCHDORFER**  
Installs your  
**Irrigation System**  
**one fairway at a time!**

Free Literature and list of installations on request.

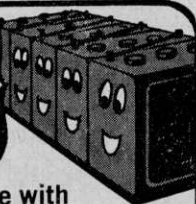
# Kirchdorfer

Irrigation, Inc.

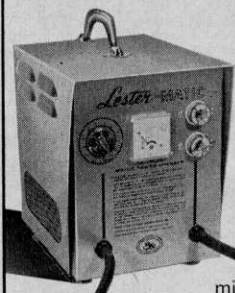
P. O. BOX 4124      LOUISVILLE, KY. 40204  
PHONE 585-4305      AREA CODE 502

For more information circle number 176 on card

## We get a real charge out of LesterMATIC!



Increase battery life with  
**LesterMATIC** golf car chargers



- Compensates automatically for line voltage variations. No taps to set.
- Superior capacity, allowing equalization of cells each cycle.
- Silicon diodes with surge protection for highest reliability.
- Convection cooled for maximum life—minimum maintenance.

**Insist on LESTERMATIC**  
**Leader in Motive Power Chargers**

LESTER ELECTRICAL  
625 West A St., Lincoln, Nebraska 68522  
LESTER EQUIPMENT  
151 W. 17th St., Los Angeles, Calif. 90015

For more information circle number 131 on card

## Graffis Swing

*continued from preceding page*

At Stratton Mountain in Vermont, about \$3 million is being invested in a golf and ski resort with six inns . . . There are nine by Geoffrey Cornish already completed and another nine being built . . . The snow and ski equipment runs into big money but it will pay for itself with the 400 and more expected at the resort inns . . . Many authorities consider the Vermont Development Department is doing the most effective job

## BOB DUNNING & ASSOCIATES

Join the increasing number of Bob Dunning designed Golf Courses and Greens. Complete layout, design and engineering, specifications, all phases, working drawings.

Buckner automatics, J-M pipe and installation.

Greens and courses with built in savings. Multiple Pin Positions.

P.O. Box 224, Area 913-Adams 6-7088  
Shawnee Mission, Kansas

P.O. Box 3597, Tulsa, Oklahoma

For more information circle number 117 on card



Member: American Society of  
Golf Course Architects



11 South LaGrange Rd., LaGrange, Ill.  
Telephone—Area Code (312) 352-2113

For more information circle number 148 on card

## WILLIAM JAMES SPEAR

GOLF COURSE ARCHITECT

116 WEST MAIN STREET  
ST. CHARLES, ILL. 60174



(312)  
584-8200

For more information circle number 156 on card

of state recreation promotion for profit.

Bruce Herd, recently retired as pro for Flossmoor (Ill.) CC, sent Joe Dey a beautiful specimen of the "teaching club" made by the famed clubmakers, Fred Herd and Bill Yoeman of Chicago . . . Fred, Bruce's uncle, won the 1898 National Open in Myopia . . . The teaching club is in fine condition, with the original leather grip and the hickory shaft and persimmon head real works of art.

Graduates of the Stockbridge School  
*continued on next page*

**G O L F**  
NATION-WIDE DISTRIBUTORS  
FOR OVER 30 YEARS  
OF  
GOLF SHOP-DRIVING RANGE  
PAR 3 & MINIATURE COURSE  
SUPPLIES

SEND FOR CATALOG:  
**NORTHERN  
GOLF BALL CO.**  
2350 W. ROSCOE ST.  
CHICAGO, ILLINOIS 60618

For more information circle number 143 on card

	<ul style="list-style-type: none"> <li>• RANGE</li> <li>• PAR 3</li> <li>• MINIATURE</li> </ul>
	Equipment Supplies • Fixtures
	Consulting and Contracting Services
	<i>Write for COMPLETE CATALOG</i>

**WITTEK Golf Range Supply Co., Inc.**

3650 AVONDALE • CHICAGO, ILLINOIS 60618

For more information circle number 167 on card

**ROBERT E. THOMASON**  
GOLF COURSE DESIGN AND  
CONSTRUCTION

Box 41  
Morristown, Tennessee  
Phone: 586-1667

For more information circle number 164 on card

# WINTER INJURY and SNOW MOLD


...have one thing in common

THEY ARE MORE SEVERE IN  
AREAS OF POOR DRAINAGE

## AQUA-GRO

... moves excess water out,  
prevents overly wet areas  
that encourage snow mold  
and winter injury

For more information circle number 190 on card



## for a good grip — a better game



Claro Non-Slip is a smooth grip cream. It gives you a truer, more confident feel of the club. It assures a firmer and more positive grip. Unaffected by perspiration, one application lasts a full round. Just 50 cents at pro shops.



Here's another invisible glove—the Claro Rosin Bag. Specially compounded to be tacky but not sticky. Offers same advantages as Claro Non-Slip—only 50 cents.

**CLARO LABORATORIES**

421 W. Ewing Ave.  
South Bend,  
Indiana 46614

For more information circle number 171 on card

## **GEORGE FAZIO**

### **GOLF COURSE ARCHITECT**

P.O. Box 9951  
Philadelphia, Pa. 19118  
215 242 1330

2140 Westwood Blvd. Room 10  
Los Angeles, California 90025  
213 475 3787

For more information circle number 119 on card

## **FERDINAND GARBIN**

*Golf Course Architect*

Member American Society  
of Golf Course Architects

R.R. 2, Box 186  
Export, Pennsylvania 15632  
Tel. 412-327-4704

For more information circle number 121 on card

## **PUTTING GREEN PERFECTION!**



(Send for Bulletin: Stolons vs. Seed)  
• Washington • Cohansey • Arlington  
• Congressional • Toronto • Pennpar  
Phone: Area 313-437-2026

**Hiram F. Godwin & Son Inc.**  
55150 Ten Mile, South Lyon, Mich. 48178

For more information circle number 122 on card

**ROBERT MUIR GRAVES**  
**GOLF COURSE ARCHITECT**  
LANDSCAPE ARCHITECT • SITE PLANNER  
LAFAYETTE, CALIFORNIA

For more information circle number 124 on card

## **Graffis Swing**

*continued from preceding page*

of golf course management at the U. of Mass., the pioneer school set up by the late Professor L. S. Dickinson, are joining with the New England GCSA in establishing a scholarship fund as a memorial to Dick . . . Orville Clapper, who endowed a scholarship in Rhode Island as a memorial to his father, the late Sam Clapper, a founder of Toro Mfg. Co., was the guy who reminded the grads of what they might do in perpetuating the

## **X. G. Hassenplug**

Golf Course Architect  
Consulting Engineer  
Design, Irrigation, Construction

1300 Freeport Road  
Pittsburgh, Pa. 15238  
412-781-6994 or 412-781-1820

For more information circle number 128 on card

## **JAMES GILMORE HARRISON**

*Golf Course Architect*

Member American Society  
of Golf Course Architects

266 Harrison Road  
Turtle Creek, Pennsylvania 15145  
Tel. 412-823-3444

For more information circle number 129 on card

## **DR. BURTON R. ANDERSON**

*Golf Course Architect*  
*Turf and Golf Course Consultant*  
Route 5 Augusta, Maine 04430  
(207) 622-7659

For more information circle number 106 on card



historic service they rendered golf in establishing the pilot plan of golf course management . . . When you think of what that schooling has done in increasing the enjoyment of golf by millions and compare the publicity it's had with the big space given the tournament players' yowl for more money and power in golf you hope the tourney boys will grow up into big IQs before they take 14 hatchets and *kill* the Golden Goose . . . Even the Evans Caddie Scholarship operation of the Western Golf Association has trou-

*continued on next page*

**William F. Gordon**  
and  
**David W. Gordon**  
Golf Course Architects  
Doylestown, Pennsylvania  
**Fillmore 8-4243**  
American Society of Golf Course Architects

For more information circle number 123 on card



**ROBERT BRUCE HARRIS**

*Golf Course Architect*

MEMBER AMERICAN SOCIETY OF GOLF COURSE ARCHITECTS

645 N. MICHIGAN AVENUE CHICAGO 11 • ILL.  
Whitehall 4-6530

For more information circle number 127 on card

*"Give your course a signature"*

*Robert Trent Jones*

**GOLF COURSE ARCHITECT**

7 CHURCH ST.  
MONTCLAIR, N. J.  
201-744-3033-34

360 BRYANT STREET  
PALO ALTO, CALIF.  
415-324-1253

P.O. BOX 4121  
FT. LAUDERDALE, FLA.  
305-564-3422

For more information circle number 134 on card

**Bob Jordan**

**Golf Course Constructor**

**Irrigation Systems**

*"I Supervise All Work"*

235 State St., East Peoria, Illinois  
Phone: 699-6974 or 673-1067

For more information circle number 135 on card

**CLARENCE E. McMURRAY**

GOLF COURSE CONSTRUCTION

Liberty, Ind. • Ph: Area 317-458-6462

*Now Building Golf Courses*

*Designed By . . .*

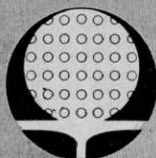
**BOB SIMMONS**

*Golf Course Design of the Future*

For more information circle number 140 on card

**WM. NEWCOMB, ASSOCIATES**

321 S. MAIN • ANN ARBOR, MICH.



**GOLF COURSE ARCHITECTS**

663-3064 PHONE 665-3226

For more information circle number 144 on card

# CLASSIFIED

## JOBS WANTED

Class A P.G.A. Professional, 15 years, excellent teacher, and former National Tournament player, desires a change. Write Box #282, c/o GOLFDOM.

**Pro Superintendent. Class "A" PGA Member. Fully experienced in all phases of golf. Golf course maintenance and turf management. Excellent teacher. Completed 1967 Course on Turf Management, Rutgers University. Experience as head pro-superintendent. Age 46, married 21 years, son, 18 years old. Willing to relocate. Excellent references. All inquiries will be answered with complete resume. Write Box #280, c/o GOLFDOM.**

P.G.A. Professional looking for new position starting November 1, 1967. Experienced teacher, clubmaker and manager. Married, Age 28 and will travel, Write Box #277, c/o GOLFDOM.

Pro-Manager position desired. P.G.A. Member, experienced teacher and manager, married, Age 28, looking for permanent position, outstanding references. Write Box #278, c/o GOLFDOM.

**SALESMAN:** Desires lines to sell Golf Professionals in the Carolinas. Long experience both men's and women's sportswear and related items. Write Box #276, c/o GOLFDOM.

Locker room Manager desires relocation. 15 years experience. Age 42, Married, references. Top clubs only. Write Box #275, c/o GOLFDOM.

Golf Professional, 20 years experience in all phases, including Teaching, Promoting, Tournaments, Management. Available for Interview. Johnny Moran, Aurora Hotel, Aurora, Illinois.

Assistant Professional. Experienced all phases; references. Desire winter employment. Age 21, single, two years college. Write Carl H. Martin, Tippecanoe Country Club, Canfield, Ohio 44406.

P.G.A. Member, 35 years, Class A, Age 55, very active. Presently employed—same club, 18 years. Excellent instructor, wishes change for '68 season. Will consider other positions. Excellent credit rating and financial position very good. Write Box #283, c/o GOLFDOM.

Golf Professional desires position for the winter months. Age 28, Married, No children, Wife can assist if desired. Excellent references. Write Box #289 c/o GOLFDOM.

Head Pro: 3 years. 1st assistant at prominent club, excellent golfer, age 27, married, good references, Request resume: Write Box #287, c/o GOLFDOM.

Superintendent: Do you require better maintenance, better quality turf, worker relationship, course renovation, budgetary control, design, architecture, construction supervision. Write Box #247, c/o GOLFDOM.

**Manager with over thirty years of successful Club, Restaurant and Motel Operation desires to locate in South, preferably in Florida but not restricted to that area. Have a complete and comprehensive knowledge and experience in all phases of above operations including Office, Food, Bar, Administrative, Maintenance, Entertainment and associated responsibilities. Married, college education, just past sixty with no children and in excellent health. Salary not so important as permanent position where experienced supervision is desired. Excellent references. Write Box #255, c/o GOLFDOM.**

**CLASS "A" P.G.A. PROFESSIONAL—Two Clubs in twenty two years, 44 years old. Wife capable of managing club. Specialist in establishing golf program at new club. Write Box #292, c/o GOLFDOM.**

Golf Pro and Assistant Pro, Team — Combined experience — 15 years. Good organizers, merchandisers, and Junior golf promoters. P.G.A. Members — 34 & 26 years old. Will run complete golf business. Send for resume. Write Box #295, c/o GOLFDOM.

Class "A" Pro desires position as Pro or Pro-Greenskeeper. 20 years experience in Course Maintenance. Good player, teacher and promoter. Finest of references. Preferably the West. Write Box #298, c/o GOLFDOM.

Pro or Assistant-wants to enter golf field, any area. Experienced and excellent golfer. Good references. Marshall Station, 170 Woods Drive, Annapolis, Maryland. COlonial 3-4285.

## Graffis Swing

*continued from preceding page*

ble getting cooperation of some of the playing pro specialists.

Joey Rey engaged as golf director of Grand Teton Lodge, Grand Teton National Park at Jackson Hole, Wyo. . . . It is one of Laurence Rockefeller interests involving fine golf courses . . . Ray Lillie is executive manager and Everett Noonkester, one of brothers famed in course management, is superintendent . . . Rey plans a program of his "Golf Schools for Kids" as an added attraction at Grand Teton . . . Rey's schools always go great with the parents as well as with the kids . . . In October, Rey goes as golf cruise director on the Matson Lines Mariposa to Australia, New Zealand, Hawaii and South Pacific isles . . . Makes a swell trip with golf ashore and lessons and practice at sea with the able Rey.

John J. Sepe, Glendale, Calif., has bought Shorecliffs CC, San Clemente, Calif. . . . Phil Ellsworth, who as receiver has managed the club for seven months, will continue as manager . . . San Jose, Calif., City Council has appropriated \$1,886,000 to buy Berryessa 144-acre course site . . . Spokane County (Wash.)

Golf Pro desires change in job. Presently employed as golf pro and Greens Superintendent, would like to stay in Ohio or in neighboring State. Good player and teacher. Good references. Married, Three children, Age 26. Write Box #299, c/o GOLFDOM.

**Club Manager with long and successful experience in every phase of managing clubs wishes to operate seasonal club on six or seven months basis. Location immaterial but Southern States preferred. Excellent references. Write Box #300, c/o GOLFDOM.**

## JOBS OPEN

Greens Superintendent: New 18-Hole semi-private. Complete pressurized water system. Knowledgeable in grasses, fertilizers, fungicides, machinery, budgeting, management of help. Grand Rapids, Michigan. Year round work. State resume, salary and references. Write Box #296, c/o GOLFDOM.

**SALESMAN WANTED.** To sell a full line of Emblem Caps. Golf Jackets, Hosiery, Shirts and Accessories. 10% commission. Write Box #222, c/o GOLFDOM.

Restaurant and catering facilities of a large and modern clubhouse available on South Shore of Long Island. Interested parties of substantial background desired. Write Box #285, c/o GOLFDOM.

**GREENSKEEPER . . .** Long Island, 18 hole course. Adequate work crew. Permanent job. Salary open.. WRITE Box #284, c/o GOLFDOM.

**AGGRESSIVE SALES AGENTS WANTED!** The following territories are available with liberal commissions for selling nationally known soft goods lines: 1. New England 2. Georgia, North and South Carolina 3. Kentucky, Tennessee, Alabama, Mississippi 4. Oklahoma, Ark-

sells in July \$400,000 in bonds for Hangman Creek Valley course at rate of 4.19523 per cent . . . Bonds are \$5,000 . . . Previous sale of Spokane County bonds was on \$6 million for construction of Public Service Building at rate of 3.752558 per cent.

Rick Diebold took pro job at Emporium (Pa.) CC Sept. 1, succeeding Donald Farber, Jr., who returns to college . . . Diebold took course management schooling at Penn State . . . George C. Winn becomes pro at De Anza Desert CC, Borrego Springs, Calif., succeeding Tag Merritt . . . Winn was assistant to Jerry Barber at Griffith Park in Los Angeles . . . John Prices named pro-superintendent at Belle Meade CC, Thomson, Ga., under construction . . . He was pro at Kingstree (S.C.) CC.

Beverly Hills (Calif.) CC which Robert Trent Jones has designed for group headed by Dean Martin is to have 600 members at \$25,000 each . . . It will be on 330 acres being levelled four miles from heart of Hollywood . . . It will cost \$15,000,000 to build and is expected to open in Sept., 1969 . . . John Ball of Bloomfield Hills, Mich., and others have bought Lincoln GC at Grand Rapids.

ansas 5. Chicago, Southern Illinois, Indiana 6. Northern California, Washington, Oregon, Montana, Wyoming, Idaho 7. Iowa, Nebraska, Kansas, Missouri. Apply for these territories only. Write Box #256, c/o GOLFDOM.

WANTED: Experienced greenskeeper superintendent for private country club in its 54th year, Northeast section. Ample greens budget. Applicant should have recent greenskeeping study and experience. Send resume, Reply held in strictest confidence. Write Box #281, c/o GOLFDOM.

**SALESMEN WANTED: INTERNATIONAL GOLF ACCESSORIES, 150 WEST 52ND STREET, NEW YORK CITY, 10019, IMPORTERS OF THE FAMOUS ALLEN SOLLY LINE OF GOLF SHIRTS HAS OPENINGS AVAILABLE IN: TEXAS, LOUISIANA, OKLAHOMA, NEW MEXICO, ARKANSAS, KANSAS, COLORADO, MISSOURI AND INDIANA, FOR HIGH QUALITY SALESMEN. EXCELLENT OPPORTUNITY FOR MEN INTERESTED IN HAVING AN EXCLUSIVE TERRITORY. TOP EARNING POTENTIAL. WRITE COMPLETE RESUME IN STRICTEST CONFIDENCE.**

**REPS—JOBBERs** now calling on golf/country clubs. Sell the fabulous all new 100% **MIRACLE RANGE BALL PICKER**. Liberal commission, bonus plan. **STRICTLY GOLF** Manufacturing, 3134 West Walton, Chicago, Illinois, 60622, Phone 826-2262 A/C 312

WANTED: Salesmen calling on driving ranges and golf courses to sell successful, proven range ball, 10% commission. Write fully to Box #288, c/o GOLFDOM.

#### MISCELLANEOUS

Wanted — Hard or Soft Goods Distributorship or Sales in Southern California. Lazy B Golf Ranch, 10604 Meads Avenue, Orange, California 92667.

For Sale — 18 hole Public Course; Excellent Family Type Operation or Potential to Turn Private; Watered Tees-Greens; Pro Shop-Snack Bar; Maintenance Equipment. Write Box #279, c/o GOLFDOM.

For Sale — 300 Member semi-private 18 hole golf course in beautiful, rolling terrain complete with pool, lovely clubhouse and excellent staff. Located in fast growing greater Washington D.C. area. Plenty of water and interior lots to develop on approximately 200 acre tract. Reasonably priced. Write Box #274, c/o GOLFDOM.

FOR SALE — Beautiful 18 hole Country Club. Excellent Kitchen facilities. Cocktail Lounge and Spacious dining room. Swimming Pool. New electric carts. Located in the vicinity of a resort. 300 Members. Semi-Private. Write Box #286, c/o GOLFDOM.

Want to lease or lease with option to buy, Golf Course. Twelve years experience in all phases of Golf Course Management. Write Box #293, c/o GOLFDOM.

26 Single Seat Golfcarts and Chargers. \$125.00 Each or Package Deal. Bob-O-Link Golf Course, North Canton, Ohio—Area Code 216 494-7710.

**GOLF CARS FOR SALE—\$175.00** and up. Gas or Elect. Power. Most all makes. Like new demonstrators reconditioned or as is. Single units or matched fleets. Dealers welcome. Send for price list. **NICKEY GOLF CAR CENTER**, 3100 N. Tripp Avenue, Chicago, Illinois 60641. Area Code 312-777-0917.

1,000,000 Golf balls wanted, used and/or cut, premium prices, we pay freight. "Strictly Golf" Manufacturing, 3134 West Walton, Chicago, Illinois 60622. Phone 826-2262, A/C 312

Golf Professional — Class "A" P.G.A. Member, 22 years at two clubs — Desires opportunity to buy into Golf Club as active partner — has cash and golf knowledge in all fields, and, wife who is competent Club Manager. Write Box #294, c/o GOLFDOM.

For Sale — 18 hole Picturesque Championship Country Club on 180 acres in Mid-West States! App. 45-50 acres overlooking golf course for home sites, apts. or motel. Large beautiful Club House equipped to handle at least 450 members. App. 300,000 pop. within 20 miles radius. Price includes practically all new equipment, new golf carts, tractors, mowers and beautiful big home overlooking golf course. Price \$425,000. 29% down, balance amortized, 6%. IF YOU CANNOT FINANCE, DO NOT ANSWER. Write Box #297, c/o GOLFDOM.

Ball-O-Matic Model 3A — never used after Factory Reconditioning. Sell at Dealer cost. FOB Akron, Ohio. Ron Patterson, 3080 S. Clev-Massillon Road, Barberton, Ohio 44203 (216) 825-7317.

For Sale: Golf Driving Range Equipment in excellent condition. Will sacrifice for less than half new price. New road putting us out of business. **NEW KINGSTON GOLF CENTER**, NEW KINGSTON, PA. (Cumb. Co.), Phone 766-9277 (area code 717).

## Classified Ads

**RATES: Minimum insertion \$7.00 for 20 words or less; additional words 40¢ each; in boldface type 50¢ per word. ALL CLASSIFIED ADS ARE PAYABLE ON PLACEMENT OF ORDER.**

**NO CLASSIFIED ADS ACCEPTED AFTER THE 20th OF MONTH PRECEDING DATE OF ISSUE. NO CLASSIFIED ADVERTISING OFFERING NEW MERCHANDISE OR EQUIPMENT WILL BE ACCEPTED.**

**Please mark all envelopes containing correspondence or checks for classified ads, ATT: Helen Mirthes, GOLFDOM Classified. Under no circumstances are we permitted to divulge the names or addresses of those placing blind advertisements.**

**Response to all box numbers ads should be addressed to the BOX NUMBER, c/o GOLFDOM, 235 East Forty-Fifth Street, New York, New York 10017. Replies are promptly forwarded to the advertisers. When replies to blind ads require more than 10¢ postage, the additional proper postage for forwarding must be supplied.**