

**GOLF COURSE DESIGN  
AND CONSTRUCTION  
EDMUND B. AULT Ltd.  
GOLF COURSE ARCHITECT**

*Sculptured Greens*

7979 Old Georgetown Road  
Bethesda, Maryland 20014  
301-942-0716

For more information circle number 175 on card



**FAIRWAY  
CONST. CO.**

**EXPERT  
SOIL  
BLENDING**

OLD OR NEW CONSTRUCTION { GREEN  
FAIRWAY  
IRRIGATION

TELE: OVERLAND PARK, KAS. NI 8-4900  
PHOENIX, ARIZ. 266-6631

For more information circle number 167 on card

*Larchmont*

**AUTOMATIC  
GOLF COURSE IRRIGATION**

Consultants-Designers-Installers

**LARCHMONT ENGINEERING**  
11 Larchmont Lane  
Lexington, Massachusetts

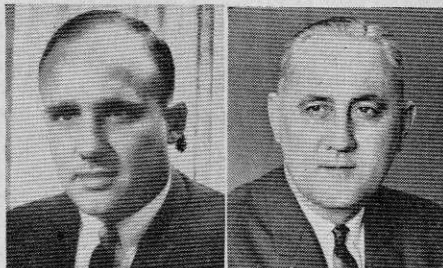
For more information circle number 166 on card

**ROBERT MUIR GRAVES**  
**GOLF COURSE ARCHITECT**  
LANDSCAPE ARCHITECT • SITE PLANNER  
LAFAYETTE, CALIFORNIA

For more information circle number 176 on card

**People  
in the News**

Professor Patrick D. Williams has been appointed to a new position with the Professional Golfers Assn. as Education Director.

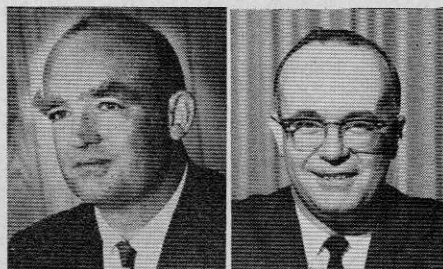


WILLIAMS

COLBURN

Harry W. Colburn was elected a vice president of Wilson & Company, manufacturers of sporting goods.

Robert A. Eaton, v.p. of marketing, Charles A. Eaton Co., Brockton, Mass., has been named chairman of the marketing committee for the National Footwear Manufacturers Association.



EATON

BUTZ

James T. Butz is the new director of marketing for Victor Golf Co., Morton Grove, Ill., president Mark Cox announced recently.

Joseph V. Poticny has been re-elected president of the Automotive Electric Association. He is manager of distributor sales of the Leece-Neville Co., Cleveland.

Mason Rudolph signed his new staff contract with First Flight, announced Lew Oehmig, president of First Flight.



RUDOLPH



ALPINE

Albert E. Alpine has been promoted to director of manufacturing and engineering for the pipe division of Certain-teed Products Corp., Ambler, Pa.



POTTER



BRACH

Roy Potter and Duane Brach have joined Harley-Davidson Motor Co., Milwaukee, Wisc., as golf car sales representatives.

Marvin T. Elstad was appointed sales manager for Ryan Equipment Co., 2055 White Bear Ave., St. Paul, Minnesota.



ELSTAD



CRANE

Neal D. Crane has been named president and chief executive officer of the Ben Hogan Company, Fort Worth, Texas.

	<ul style="list-style-type: none"> <li>• RANGE</li> <li>• PAR 3</li> <li>• MINIATURE</li> </ul>
	Equipment Supplies • Fixtures
	Consulting and Contracting Services
	<i>Write for            COMPLETE            CATALOG</i>

## WITTEK Golf Range Supply Co., Inc.

For more information circle number 202 on card

A most impressive addition to your course

## PERMANENT MARKERS CAST IN BRONZE or ALUMINUM

Permanently weatherproof. Can be imbedded in concrete in the ground or inserted in vertical holders. Size & design to suit your requirements. For full information, write or call

MARKETING  
ASSOCIATES, Inc.

Hall of Fame  
Plaques  
210 MELLETT  
BLDG. • CANTON,  
OHIO 44702  
(216) 456-9366



For more information circle number 101 on card

Nothing 'cut' with this  
COUPON except grass  
the way it should be!

Send it  
to Bridgeport

Read why Manco-  
Locke Handles  
Easier ...  
Cuts Better ...  
Costs Less ...



Send me FREE Literature  
on **MANCO Locke** Highwheel Mowers

... and also on Locke reel and rotary mowers.  
I'd like the name of closest dealer too.

(name) (street)

(city) (state) (ZIP)

**Locke** Manufacturing Cos., Inc. 1020-M Conn. Ave.  
Bridgeport, Conn.

For more information circle number 189 on card

**BELLANTE & CLAUSS INC.**

*Art Wall Jr.*  
**GOLF COURSE ARCHITECTS**

Master Planning • Site Analysis  
Plans Specifications • Supervision  
Irrigation Systems • Storage Ponds

Bellante and Clauss Bldg.  
Scranton, Pa.  
717-344-8531

Suburban Station Bldg.  
Philadelphia, Pa.  
215-564-2444

For more information circle number 180 on card

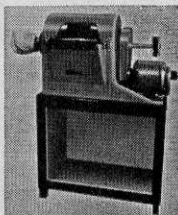
1967 Improved

## CLUBSCRUB

The Safest and Fastest  
Way to Clean Clubs

Takes less than 2 minutes

ClubScrub cleans faster, better . . . is rugged, easy to operate, trouble-free . . . trade-in policy, replacement parts. Immediate delivery.



Distributors, Manufacturers Representatives inquiries invited, territories open.

*ClubScrub, Inc.*

BOX 300, SCHENECTADY, N. Y. 12301

For more information circle number 132 on card

## CUSTOM MADE WOODS

#1 THRU #15

## CUSTOM MADE PUTTERS

Including Famous "WON-PUTT" &  
"PRO'S OWN"

## Repairs-Any Make Club

Fast Service — Reasonable Prices

Write for Catalogue & Price List

*Bert Dargie* GOLF CO., INC.

3030 SUMMER AVE. • MEMPHIS, TENN. 38112  
PHONE 324-4688 AREA CODE 901

For more information circle number 159 on card

## MILLER GREEN

### Miller Sprinkling Systems

Division of A. J. Miller, Inc.

1320 North Campbell Road, Royal Oak, Michigan  
313, 398-2233

40 years of experience in designing and installing  
irrigation systems

For more information circle number 212 on card

## People in the News

Charles R. Johnson has been appointed irrigation sales manager for Hector Turf and Garden Supply Co., Miami, Fla., the exclusive distributor of Toro's turf maintenance equipment.

Robert D. Rickey has been elevated to the office of president of the National Golf Foundation, Chicago, Ill.

George J. Skarich has been appointed executive secretary of the Pacific Northwest Golf Association.

### Eleven years ago

Cary Middlecoff won his second U.S. Open Championship at the Oak Hill Country Club, Rochester, N.Y.

### New plant for Mallinckrodt

A new plant of Mallinckrodt Chemical Works is being built in Raleigh, N. C. to manufacture organic and inorganic chemicals.

## GEORGE FAZIO

### GOLF COURSE ARCHITECT

P. O.Box 9951

Philadelphia, Pa. 19118

Tel. 215 242-1330

For more information circle number 111 on card

MR. ZIP SAYS:

ZIP CODE IS FOR EVERYONE.

USE IT FOR BOTH BUSINESS

AND PERSONAL LETTERS.