

Mist blower vs. boom sprayer

*Spraying fairways is becoming more common every day.
Here is a comparison of two methods.*

By DON WRIGHT

Superintendent, The Camargo Club, Cincinnati, Ohio

The big problem on golf courses today is time. Therefore, superintendents must find more ways to speed up maintenance. The trend for spraying fairways has become widespread, and more and more superintendents are doing it every year. The cost is no longer the deciding factor; time is.

Let's take a look at boom spraying. If you have a 21-foot boom on a 300-gallon tank with a 20 to 25 g.p.m. pump, it will take a good spray man one to one and a half working days to spray a 35-to-40-acre fairway golf course. This, until the high-powered mist blower arrived, was the best you could do. However, while the mist blower will do most of your jobs, I would not advise its use for herbicides.

Let's compare the two machines and then you be the judge. In my opinion, it is the best way to spray large areas in a short time.

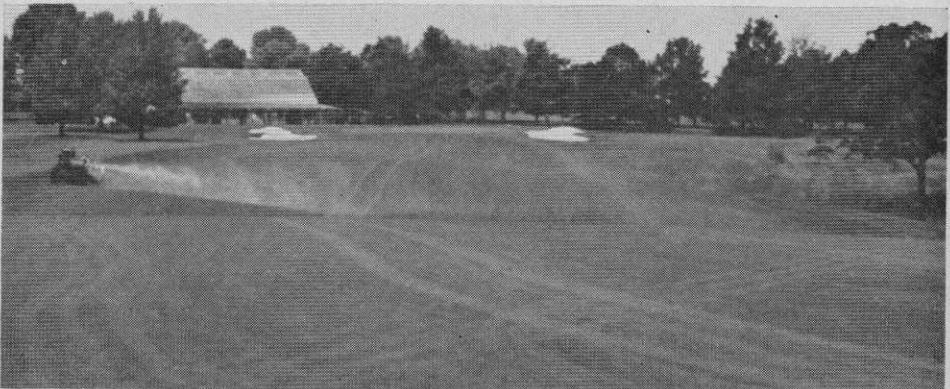
After digesting this information, you

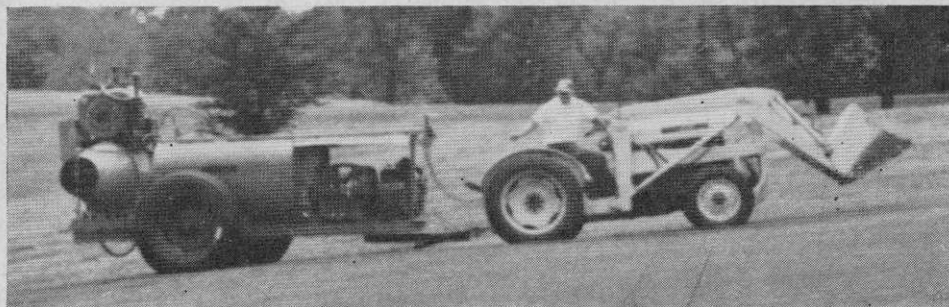
	MIST BLOWER	BOOM SPRAYER
Cost	\$4-5,000	\$3-4,000
Capacity	300 gals. or more	300 gals. or more
Pump	20 - 30 gpm	20 - 30 gpm
Spray width	60 to 90 ft.	21 to 30 ft.
Time to spray 35 acres	3 1/2 hours	8 to 12 hrs.
Time to spray greens 5-acre total	3 1/2 to 4 hrs.	8 hrs. 2 men
Large tires	yes	yes
Electric brakes	yes	yes
Remote control	yes	yes

can see the big difference and, bear in mind, the most critical time to spray is after a rain with high humidity. With the mist blower you spray from the rough to the fairway and with the boom sprayer you spray on the soft wet fairway.

continued on page 50

With mist blower, you spray from rough to fairway. With boom sprayer, from wet fairway.





While mist blower, above, will do most of your jobs, use for herbicides is not advised.

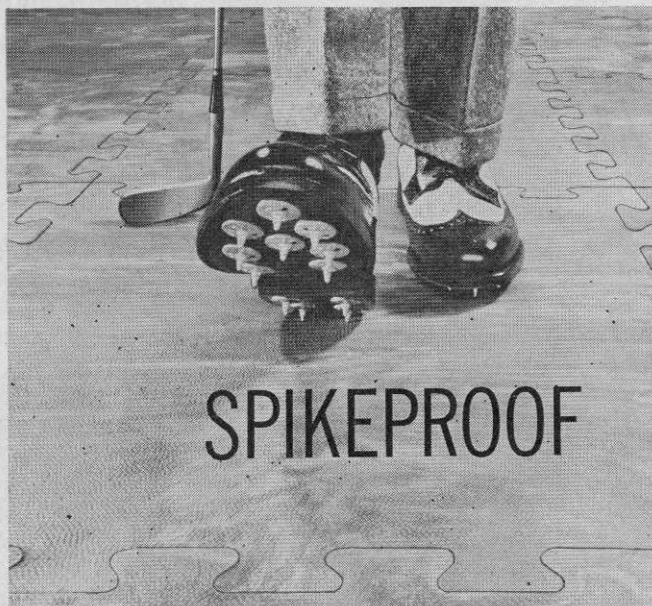
MIST BLOWER

continued on page 48

Air is part of the carrier for the blower and you can cover your fairways in two passes, one from each side of the fairway. With the boom sprayer it takes six


to 10 passes. With a mist blower, you can apply 30 gallons, more or less, of material to the acre. With a boom sprayer, you need about 60 gallons.

I think there is an exciting future for the blower and it warrants inquiry. •



GOLFTILE Interlocking Rubber Flooring

Stays beautiful under heaviest spike traffic... won't mar, scratch, chip or dent. Prevents slipping and sliding. Eliminates clatter. For locker rooms, lounges and pro shops. Golftile is 1/2 inch thick rubber tile. Exclusive interlocking design makes it easy to install over wood or concrete, without mastic. Attractive marbled colors. Guaranteed 5 years prorata. Write for **Free Sample**.

MITCHELL  **RUBBER & PLASTICS**
Division of Royal Industries, Inc.

2130 San Fernando Road, Los Angeles, Calif. 90065, Dept. C77

For more information circle number 150 on card