



About half of the youngsters who were enrolled in the Lawrence County CC Junior program are shown with Pro Dick Grout, Mrs. Harry Fee, Mrs. Richard Englum and A. J. Bowman, club president.

*Dick Grout's Summer  
Program Outlined*

## **3- Phase Program Gives Junior Golfers Polish**

By **HERB GRAFFIS**

Lawrenceville, Ill., is a golf-minded community that has in Lawrence County CC a club that is much livelier than is often found in a town where the population is somewhat greater than 6,000.

The club's 1965 Junior program, directed by Pro-Manager Dick Grout and an energetic Junior committee, was based on the idea of not only educating the youngsters to be good golfers but to be good club members. The success of the program has astonished members who didn't believe that with two series of lessons and an examination, boys and girls in the 9-14 age bracket possibly would show so much golf interest and progress.

Attendance was around 70 at every class. As is the case in most well run Junior programs, women members of the committee were credited by the professional as being 99 per cent responsible for the school's being popular and effective. Perhaps Dick Grout is letting his modesty peek through, but most pros will agree that a Junior instruction program is never any better than the women members' enthusiasm for it.

### **Stardom Not The Object**

Stardom isn't the objective Grout has for his golfing youngsters. He and his members are more concerned with getting the kids to enjoy the social as well as the physical compensations of golf.

A letter was sent by Grout to Lawrence County CC members on June 3 in which the Junior program was outlined. It read:

Dear Parent:

A course of instruction in three phases will be offered boys and girls between the ages of 9 and 14 at the clubhouse, beginning June 18. Phase I will cover lessons on the rules, courtesies and fundamentals of golf.

Prior to moving into Phase II, a written examination must be successfully completed with a passing score of 75 per cent. Participants must attend at least two of the three scheduled lessons. Failure to pass the written exam, in addition to barring entry into Phase II, will preclude the use of

the course in the absence of immediate parental supervision. Although this may seem overly stringent, to reduce the examination to "rubber stamp" approval will defeat the purpose of the program.

Phase II will be devoted to general instructions on July 9-16-23, commencing at 9. Golf equipment, i.e., clubs, etc., must be furnished by the participant. This phase is not intended to supplant individual lessons from the pro, but afford a transition period from Phase I to Phase III. During this period, observation of the individual's talents will enable the teachers to categorize the participants in preparation for Phase III.

Phase III will consist of 16 holes of play, to be scheduled as shown:

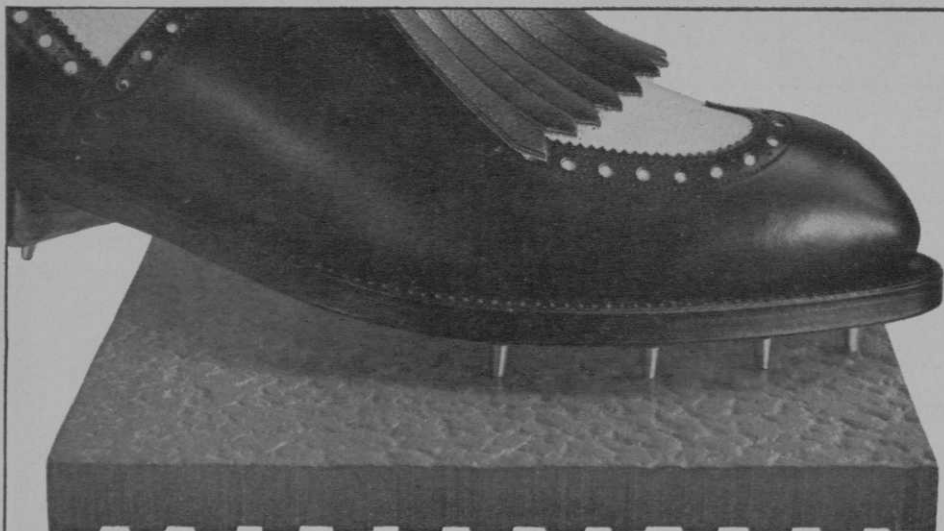
Aug. 6 & Aug. 13 — 4 holes each to establish individual handicaps;

Aug. 20 & Aug. 27 — Tourna-  
(Continued on page 74)

---

*To stay in the Junior program at Lawrence County CC, youngsters have to shoot 75 per cent, although some exceptions are made for the nine- and ten-year olds who, it is evident, give the test a good try. How would you make out on it? Nine Juniors scored 100 per cent; eight hit 96 per cent; 17 scored 88 or higher; three passed with 80s and another had a 76.*

1. When you finish playing a hole, should you immediately leave the green? Yes— No—
2. Does the rub of the green mean when a ball in motion is deflected by any outside agency? Yes— No—
3. What is the penalty for a lost ball? Stroke— Stroke and Distance—
4. What is meant by Match Play? Total Strokes— Total Holes—
5. Should you talk while others are making a stroke? Yes— No—
6. Can you ground or sole your club in a hazard? Yes— No—
7. Should you help your friend in the group look for a lost ball? Yes— No—
8. What is meant by Stroke Play? Total Strokes— Total Holes—
9. Does the term, through the green, include the putting green? Yes— No—
10. The size of the hole on the putting green is? 4 inches— 4¼ inches—
11. A ball is deemed lost after searching? 5 minutes— 10 minutes—
12. The maximum number of clubs you can carry is? 14— 15—
13. The weight of a ball is? 1.62 ounces— 1.68 ounces—
14. The diameter of a ball is? 1.62 inches— 1.68 inches—
15. When one has the honor, does he? Play first— Play last—
16. What is the penalty for a ball out of bounds? Stroke— Stroke and Distance—
17. Should you play until the players in front of you are out of range? Yes— No—
18. Should one count every stroke, even if he misses the ball? Yes— No—
19. Should you tee your ball in the rough, or in a bunker or a hazard? Yes— No—
20. Should you smooth out foot tracks and divots from a bunker? Yes— No—
21. Is casual water a temporary accumulation of water? Yes— No—
22. Does "Fore" mean that you should play with caution? Yes— No—
23. Is a bunker a hazard? Yes— No—
24. Is a road or path a hazard? Yes— No—
25. Should you carry your golf bag to the green and lay it down? Yes— No—



**Carlyle Golf Club Quarry Tile...** combines the beauty and durability of ceramic quarry tile with rippled non-slip surface. In a variety of rich colors, 6" x 6" x 1/2" in size, for new floors or resurfacing. Contact your ceramic tile contractor or write direct. **The Carlyle Tile Company, Ironton, Ohio; or Jordan Tile Mfg. Co., 909 Railroad St., Corona, Calif., 91720.**

**MOSAIC**®

## Front Yard Maintenance

*(Continued from page 48)*

Water is not one of Sunset Oaks' headaches, except when it refuses to go into the ground. The development owns a lake that holds 3½ million gallons and has free flowing wells to replenish it. On a long summer day, the course may use as much as 1.7 million gallons on the fairways, applied through a quick-coupler system. Sprinklers at the greens are operated automatically.

### Sun and Wind Hurt

The climate is nearly as devilish for Umland as the soil. The incessant sun bakes the shallow soil throughout the long summer days, often with assistance from stiff winds. Frost nips the tender grasses in the winter when heavy cloud layers often last for weeks.

Fairways were seeded to a 40-60 Highland bent and red fescue mix in December, 1962. Six months later the course was playable. In October of 1963 the first major tournament, the Porky Oliver Open, was held. A year later the Camellia

Open was held.

Greens are Seaside bent over 14 inches of washed sand. They average 10,000 square feet. In spite of obstacles, Sunset Oaks management was able to reduce its maintenance budget for 1965 to \$85,000 from the \$100,000 allotted last year.

## 3-Phase Junior Program

*(Continued from page 32)*

ment (Medal) play of 4 holes on each date to determine the Junior champions.

An entrance fee of \$2.00 will be charged for each person enrolling in the program. Money collected will be returned to the participants in the form of prizes and refreshments at the end of the tournament.

Parents who desire to enroll their children in the program should submit their names and ages to the professional as soon as possible and no later than June 18.

Junior Golf Committee