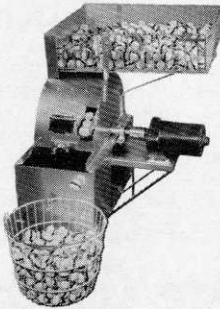
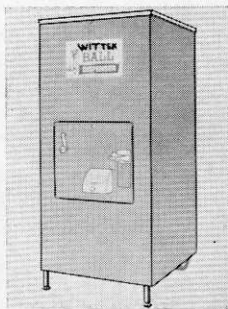


The first VIP golf bag made by The MacGregor Co. was presented to Jim Campbell (r) of the Cincinnati Reds, who won the Baseball Celebrity tournament played at Indian Wells, Palm Desert, Calif., last fall. Eddie Susalla, Indian Wells pro (behind George Gobel who holds mike) made the award. The VIP bag, made of alligator-kangaroo leather, is described by MacGregor as luxurious.

### Wittek Makes Additions to Range, Miniature Lines

Wittek Golf Range Supply Co., Inc., 5122 W. North Ave., Chicago, Ill., has made two new major additions to its line of range and miniature



golf equipment and supplies. The Wittek Junior Golf Ball Washer washes 15,000 range balls an hour, using only 13 gallons of water per filling and is fully automatic. The Wittek Range Ball dispenser features a standard single or double unit cabinet which will take interchangeable ball dispensing mechanisms in manual or electric models. Electric models also offer a remote control feature for private club practice tee lines. Interchangeable ball dispensing mechanisms were designed to promote easy checking of equipment, quick replacement or conversion from manual to electrical operation.



Range operators can cut costs by getting double the mileage from range cuts by having them rebuilt. Stop in and drive some yourself and see how we do it. Never before has a rebuilding job of this quality been offered. Every cut ball has new winding and we apply the same cover as the one used on our new construction range ball. The carefully vulcanized cover has the best Eurathane enamel, and after the stripe and brand are applied, a clear coat of Eurathane is sprayed on. Also in yellow cover.

**Price—\$2.90 per dozen with your cuts. Truck freight paid in on 1,000 balls or more. Also finest quality new range balls in 2 compressions.**

**You Can Pay More, But You Can't Buy Better!**

**HUGH J. McLAUGHLIN & SON, Inc.**  
614 N. Indiana Ave., Crown Point, Indiana

### Singleton Irrigation Systems, Inc.

Manchester-by-the-Sea, Mass.

**JACKSON 6-4649**

219 E. Broward Blvd., Fort Lauderdale, Florida  
**JACKSON 4-4331**

**Engineers, Consultants & Installers**  
**Manual, Semi-Automatic or Automatic Controls**

### GOLF COURSE IRRIGATION

#### Cummings & Bricker, Inc.

Box 305, Batavia, N.Y.

**Engineers**

**Installers**

Classified Ads • P 124  
Buyers' Guide • P 127

# **J. PRESS MAXWELL GOLF COURSE CONSTRUCTION COMPANY**

## **Designer and Builder of Fine Golf Courses**

**Member of the American Society of Golf Course Architects**

5715 East Third Ave.,  
Denver 20, Colorado  
Tel. 333-3057

Box 767  
Aspen, Colorado  
Tel. WA. 5-3409

### **Keep Cushman Trucksters on-the-go at Scottsdale**

Scottsdale (Ariz.) CC keeps abreast of its continuous watering program with two tri-wheel utility Cushman Truckster vehicles. The



780 models are used to transport nozzles, hoses and other equipment used in this part of the maintenance work. The Trucksters can carry an 800-pound payload. They are used practically around the clock at Scottsdale since the rainfall there averages only 6 or 8 inches a year. The club also has a fleet of 55 Cushman Golfsters.

### **Allis-Chalmers Acquires Chamberlin Metal Products**

Allis-Chalmers of Milwaukee, Wis., has purchased Chamberlin Metal Products, Frankfort, Mich., manufacturer of electric and gas driven golf cars, and pull-type carts. The Frankfort

plant which employs about 20 people will be operated as a wholly-owned subsidiary of Allis-Chalmers. George K. Petritz is to continue as manager of the Frankfort operation. The newly purchased company was founded in 1939 and moved to Frankfort from Chicago three years ago. The purchase price was not disclosed.

Lloyd B. (Sid) Jackson has been named sports products sales manager for golf cars and carts manufactured by Allis-Chalmers. Jackson has been with Allis-Chalmers for 13 years in a sales and dealer service capacity. In 1962, he was promoted to the position of Western region engine sale manager. He is a Navy-Marine veteran of World War II and attended Monmouth (Ill.) College.



**Jackson**

### **Palmer Equipment Line**

The Arnold Palmer Co., Chattanooga, Tenn., recently introduced its new line of golf equipment. Palmer, the firm's president, plans to play the equipment he designed and developed. Called the Tru-Matic, the line will be sold in pro shops only. The Palmerized Tru-Matic patented steel center ball also was introduced with the woods and irons.

# **Complete Golf Course Construction**

## **MOORE GOLF, INC.**

**DIVISION OF  
MOORE, KELLY & REDDISH, INC.**

**Roads, Lakes, Playing Fields, Irrigation Systems**

**Box 606, Orange, Va.**

**Tel. 7357**

## SPIKE RESISTANT PNEU-MAT RUNNERS



**MONEY BACK TRIAL OFFER:**  
Order a 24" x 60" trial section  
at \$13.50 postpaid. Test it on an  
area which gets especially hard  
wear. Money back if not satisfied.

## Save your Club House Floors

**SUPERIOR RUBBER MFG. CO., INC.**  
145 Woodland Ave. • Westwood, N. J.

● Rugged, reversible Pneu-Mat Runners, woven of rubber-impregnated fabric, outwear rubber, provide comfortable walking for spiked shoes with complete floor protection. Improve club house appearance. Competitive in first cost—lowest in long-life cost.

Standard Widths 20"—24"—30"  
36"—42"—48"

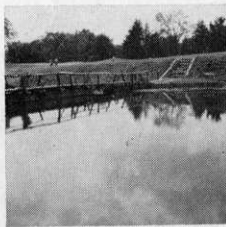
*Write today for illustrated folder*



Julius Boros (center), who won so often with Wilson equipment in 1963, checks '64 model clubs with Joe Wolfe (l), golf promotion director, and Art Leazette, manager of the Wilson plant in River Grove, Ill.

### Phelps Dodge Product Reduces Aquatic Weed Formation

Phelps Dodge Refining Corporation, 300 Park Ave., New York has begun treating ponds and water hazards with copper sulphate, long used



Before and after at Knollwood CC, White Plains, N.Y.

to purify water in municipal and other systems throughout the country. The product is said to reduce unsightly aquatic weed formation and green surface scum which are due to algae growth.

### Handles Crookshank Clubs

Angelo Burton Corp., Box 242, Middlefield, O., is the sole distributor for the Crookshank golf clubs in U.S., Canada, Mexico and South America. Produced in England, the new clubs will be marketed on a pro-only basis through a nationwide organization of independent reps. The Burton company provides three week delivery on special orders. The Crookshank club is unique in that the shaft of the head enters the clubhead at an angle, bringing it much closer to the center of gravity and giving it, the manufacturer claims, superb balance.

### Four-Way Stretch Built into Kohler Engines

Kohler Co's interchangeable engines of 6½, 7, 8 and 10 hp, are adaptable to a variety of engine-powered equipment. Each of the engines shown in the photo will fit into the compartment of a single basic tractor designed for interchangeable engines. Instead of designing, engineering and building four tractor models, a manufacturer can develop one basic machine and offer it with a choice of horsepower. Base bolt dimensions, crankshaft diameters and heights on all four engines are the same.



### Cuts Down on Wildness

The Victura Golf Ball, with its perfect circle steel center, will reduce hooks and slices, says Bristol Pro-Golf, Inc., Melrose Park, Ill. According to the company, the Victura 90-plus compression tested ball features tru-tension electronic winding along with a perfect circle steel center.

# PGA OFFICIAL GOLF BAG TAGS

## CLUB MEMBERSHIP TAGS

### NEW IMPROVED

**PLASTIC**  $\frac{1}{8}$  INCH THICK  
HEAT EMBOSSED  
WITH METALIC FOIL

CHOICE OF  
7 COLORS

**\$15<sup>00</sup>** per

**100**

Furnished with Heavy Plated "5" Hooks  
BEAD CHAINS \$1.50 per 100 EXTRA  
LEATHER STRAPS \$5.00 per 100 EXTRA

**SPECIAL CLUB EMBLEMS  
ON BACK TO ORDER**

IRV SCHLOSS  
PGA GOLF PROFESSIONAL

QUEEN OAKS GOLF CLUB  
CLEARWATER, FLORIDA



SEND FOR SAMPLES  
ALSO AVAILABLE  
IN FIBRE  
Send For Catalog

## SEND FOR CATALOG

DISPLAY ARRANGEMENTS -  
BAG TAGS - SIGNS - CLUB  
CLEANING EQUIPMENT  
CLUB STORAGE BINS  
GOLF PRIDE GRIPS

**MILLER GOLF PRINTING  
AND SUPPLY**

2053 Harvard Avenue Dunedin, Florida

## Holley Acquires Interest in First Flight Firm

Frank N. Holley, Jr., Miami banker and businessman, has acquired a stock interest in First Flight Co., Chattanooga, Tenn., and has



Frank Holley (l) and Lew Oehmig.

been elected to the firm's board, according to Lew Oehmig, First Flight pres. For the last 20 years, Holley has been associated with Miami and Coral Gables banks. Thirty years ago he started the Holley 5 & 10 cent store chain that stretched over southern Florida. He has long been associated with welfare and civic organiza-

tions in the Coral Gables area. Holley is a former president of Coral Gables CC.

## International Markets Two Snow-Throwers

International Harvester Co., Chicago, Ill., is marketing two new walk-behind snow thrower models. Said to be easy to start and easy to handle, the self-propelled throwers merely need to be steered while they do the heavy work at a 1½ mph pace. Windrows are eliminated since snow is cast up to 15 feet. The International 35 Snow Thrower, with a 3½ hp engine, covers a 20-inch swath, and can clean up to 100 feet of four-foot sidewalk in five minutes. Features include recoil type starting and replaceable scraper blade. The International 60, with a 6½ hp engine and a 28-inch swath, is a heavy duty gear-driven model with 248 lbs. of built-in weight. It has a forward and reverse shift for maneuvering in tight quarters and a hand crank to change snow discharge direction.



## TROUBLE FREE! RENTAL CART SERVICE

We furnish you all you need on rental share basis. No investment for you! We deliver and service carts regularly and keep them in good repair — FREE. Clubs not held responsible for damages, theft or breakage.

**CADDY-ROLL RENTAL SERVICE**  
Three Rivers, Michigan





# RALPH PLUMMER

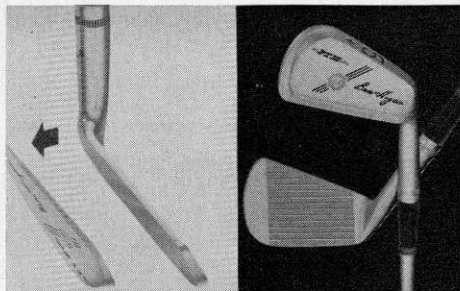
## GOLF COURSE ARCHITECT

Member, American Society  
of Golf Course Architects

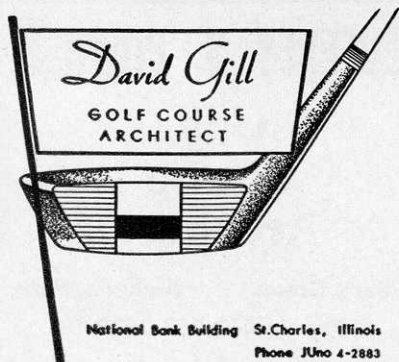
6455 Woodstock Road • Fort Worth 16, Texas  
Pershing 8-4215

### Blade on Blade Design Features Hogan Irons

What is said to be a revolutionary "blade on a blade" is an exclusive weight distribution factor in the 1964 Power Thrust III irons produced



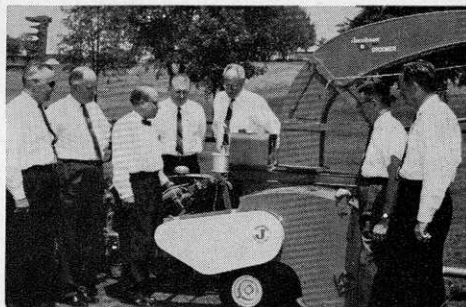
by AMF-Ben Hogan Co. The forward or "control" blade plane is said to give the iron a larger "sweet spot." The rearward or "power" blade is engineered for optimum weight distribution to transfer full swing force into the ball. The irons have "flash reaction" shafts and "slip-proof" grip, made of a special rubber and cork compound. Hogan calfskin grips can be obtained as an alternative. The 21 component parts in the irons, according to Hogan, have undergone extensive prototype testing and refinement.



## GOLF COURSE DESIGN AND CONSTRUCTION EDMUND B. AULT GOLF COURSE ARCHITECT

### Master Planning of Complete Site

11607 Grandview Avenue  
Silver Spring, Maryland  
Whitehall 2-0716



E. A. Jacobsen (second left), pres. of Jacobsen Mfg. Co., and Sherman C. Heth (third left), engineering vp, and a company panel inspect the all new Turf Groomer, which is expected to get wide distribution this year. Jacobsen's turf equipment panel is a unique planning group. Twice a year, five men representing different parts of the country meet to devise new equipment or revise standard models to broaden the market potential.

Rowco Manufacturing Co., Inc., 4812 Emerald st., Keene, N.H., has issued a 12-page brochure on its new Model 880 Brushking portable powered brushcutter. It can be obtained upon request. Part of the brochure is devoted to proper brush control and outlines the benefits of mechanical brush clearance.

## WILLIAM P. BELL & SON GOLF COURSE ARCHITECTS

Member: American Society  
of Golf Course Architects



544 Sierra Vista Avenue  
Pasadena, California

Sycamore 3-6944

Atlantic 7-2933

# James G. Harrison Ferdinand Garbin

**GOLF COURSE ARCHITECTS**

Member

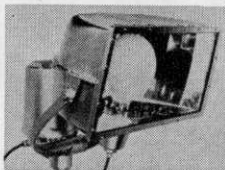
American Society of Golf Course Architects

266 Harrison Road  
Turtle Creek, Pa.  
823-3444

R. R. 2, Box 186  
Export, Pa.  
327-4704

## Improved Wide-Lite Lamps

Improved models of 400-watt and 1,000-watt mercury vapor floodlights have been introduced by the Wide-Lite Corp., 4114 Gulf Freeway, Houston, Tex. The fixtures have two new features. The cast aluminum floodlight body's lens mounting flange now turns outward instead of inward, increasing the 1,000-watt fixture's lens area by more than 30 sq. ins. and adding more than 75 sq. ins. of cooling surface to the unit. Improvements in the 400-watt model are proportionate. Two additional reflectors have been added. According to the firm, the new models retain all other "Wide-Lite" features. These include combination ballast box and mast fitter, patented Stabilux socket which protects lamps from breakage during rugged use, tempered glass lenses, stainless steel fittings and screws, cast aluminum housings and cast-in cooling fins.



## Chipping Practice Device

Campatio, Inc., Box 201, Norris, Tenn., is introducing a golf gadget designed to make the lawn area into a practice green for short approach shots. The Chipnet, a 48-inch by 48-inch

**FRANCIS J. DUANE**  
Golf Course Architect

735 Port Washington Boulevard  
Port Washington, L. I., N. Y.

516 - PORT WASHINGTON 7-7851



**ROBERT BRUCE HARRIS**

*Golf Course Architect*

MEMBER AMERICAN SOCIETY OF GOLF COURSE ARCHITECTS

645 N. MICHIGAN AVENUE CHICAGO 11 • ILL.  
Whitehall 4-6530

nylon tire-cord net, is supported a foot off the ground by four plated steel legs. It is designed to pocket fly balls hit into it and hold them. It is claimed to be completely weather-proof and can be set up or removed in a few minutes.

## Ezee-Flow Spreaders Cover 30-50 Acres Per Hour

Ezee Flow, 3428 N. Harlem, Chicago, Ill., has introduced the Ezee Flow No. 111 spinner-type fertilizer spreader. Reported capable of



spreading 30 to 50 acres per hour, the spreader handles any granular, semi-granular, or pelleted fertilizer with high uniformity. According to the firm, the 3,000-lb. capacity (4,000-lb. with sideboard extensions) spreader will spread fertilizer in 28-foot widths and also handles grass seeds. It features the patented Ezee Flow agitator and large-size tires to prevent turf damage.

**GEOFFREY S. CORNISH**  
Golf  
Course  
Architect

Fiddler's Green Amherst, Mass.  
Phone: 413-253-3913

**Complete  
GOLF COURSE CONSTRUCTION  
BY CONTRACT  
VAN BUSKIRK CONST. CO.**

**Grading, Supervision, Irrigation  
and Seeding**

**Free Estimates  
GUARANTEED WORK**

**215 Bensen Bldg., Sioux City, Iowa  
Ph. 584 Hawarden, Ia.  
Ph. 5-3612 Sioux City, Ia.**

**New Accelerator Thread  
in U. S. Rubber Golf Balls**

The 1964 Royal golf equipment line has much appeal. U.S. Rubber claims a far-reaching ball change with a new accelerator thread, 90 feet of which is stretched eight times normal



length around L/P ball centers for greater distance and accuracy. The ball has a thin-walled liquid Silicone center and rugged Cadwell cover. Queen Royal L/P balls have accelerator thread and new Royaloc finish. Royal's Micro-Balanced irons feature improved Flexomatic True Temper shafts designed to match head weight and correlate the set for weight uniformity.



*"Give your course a signature"*

*Robert Trent Jones*

**GOLF COURSE ARCHITECT**

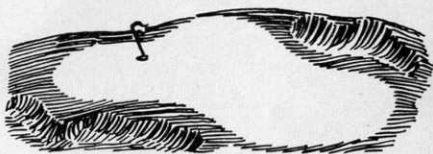
**20 VESEY STREET  
NEW YORK 7, N.Y.  
212-BE 3-1023**

**360 BRYANT STREET  
PALO ALTO, CALIF.  
415-324-1253**

**EDWARD LAWRENCE**

**PACKARD**

**GOLF COURSE ARCHITECT**



**Code 312 352-2113**

**11 South La Grange Road La Grange, Illinois**

Drilled-through hosel mountings give proper weight distribution. Royal woods, of bonded maple sheets with Uniseal finish to seal out moisture, have a "sight" at the club face edge to line up shots. Power balanced Queen Royal clubs have scoop contoured sole plates. Premier Naugahyde® Royal bags come in two men's models: the Keystone step-down, in brown or black alligator, with leather strap and trim, double-zippered ball pocket, adjustable padded sling, and sturdy Royalite® bottom; and the round top set-down, with adjustable club dividers, detachable hood, bag balancer strap, and Royalite bottom. Oasis Green Premier Naugahyde women's bags have molded rubber bottoms, vanity pockets, and umbrella holders.

**Victor Register Computes  
Customer's Change**

The Business Machines div. of Victor Computer Corp., Chicago, Ill., has introduced a visible indication cash register with multiple totals. The receipt-issuing machine automatically computes customers' change after listing deductions for tax, refunds, and coupons. It has enforced registration to identify the clerk and department transaction. Keyboard variations are available with capacities ranging from \$99.99 to a cent less than \$10,000.00. The manufacturer claims the register's operation is quiet and easy to learn.

**Golf Club Management Company**

**75 E. Wacker Dr., Chicago 1; Phone 263-1589**

**Specialized Consulting Services in:**

- All phases of club operations • Organization-new or operating clubs • Long range planning • New club development • Management selection & supervision • Interim or temporary management

Our staff of trained executive and professional personnel are now available nationally. We have established and executed successfully a plan for sound new club development.

**Write or call for full information**



**William F. Gordon**

*and*

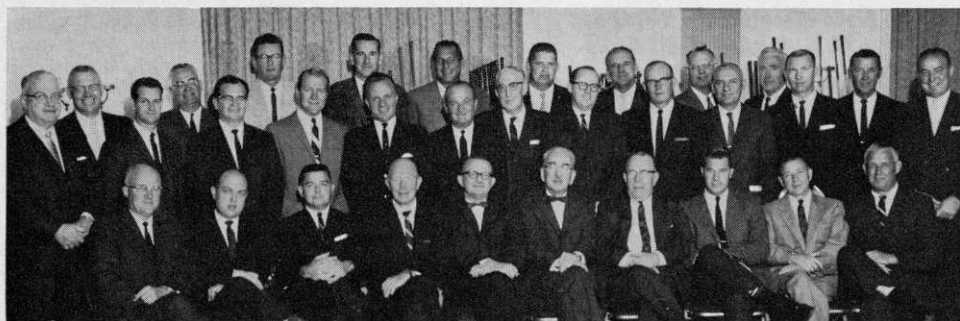
**David W. Gordon**

**Golf Course Architects**

**Doylestown, Pennsylvania**

**Fillmore 8-4243**

*American Society of Golf Course Architects*



***H & B Sales Force Enthused Over '64 Prospects***

Sales personnel who attended the Hillerich & Bradsby Co's annual sales meeting in Louisville, Ky., late in 1963, were brimming over with enthusiasm as to prospects for the Power-Bilt line this year. Besides studying the 1964 models, the sales team looked ahead to '65 and made many suggestions for even further innovations in the H & B line. At the meeting were (seated, l to r): Gurdon Leslie of True Temper, Don Hess, Bart Brown, Ed Medaris, Charley Quick, A. B. Birtles, Al McCann, Don Copeland, Bill Schoenbaechler and Carl Gliessner. (Standing): Ed Davidoff, Jack McGrath, John MacDonald, Tom Force, Manuel Rivera, Howard Holzum, Joe Mellor, Bill Zylstra, Orv Parsons, Dick Davis, Gus Novotny, R. F. (Red) O'Dea, Bill Kaiser, Jr., Bill Becker, Walt Cisco, A. E. (Bud) Schwei, Joe Rountree, Ken Bayers, John Sullivan, Gene Duncan, Joe Sullivan and Bill Kaiser.

***Woods Nest Head Cover***

The "Woods Nest", a new type of club head cover, is offered by Ohio Sales Co., 22 Upland Ave., Youngstown, O. The rigid plastic cover fits into the golf bag to keep each wood in position. A pliable plastic top snaps over each

club. There are two models, a short one which covers the club heads only, and a longer one with individual plastic tubes extending the length of each club to protect shaft and grip. Ohio Sales also markets a canvas "Protecto Bag" to cover bag and clubs when storing or shipping.



LAseil 7-0193

435-4370

**Paulini & Vespa Bros., Inc.**  
**GOLF COURSE CONSTRUCTION**

**Builders of Better Golf Courses**

**P. O. Box 563, Fruit Street**

**Hopkinton, Massachusetts**



## New Brunswick President

John L. Hanigan has been elected president of the Brunswick Corp., which manufactures the MacGregor golf equipment line. He serves



as principal operating officer and directs manufacturing, marketing, engineering and research operations. Hanigan was with Dow Corning Corp. for 26 years and was executive vp when named to the Brunswick post. Besides heading Brunswick, Hanigan is a member of both the company's board and executive committee.

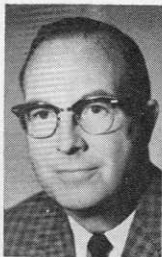
## DuPont's New Material in Etonic Golf Shoes

The Charles A. Eaton Co., maker of Etonic golf shoes, is the only shoe manufacturer selling to pro shops which offers shoes with uppers of Du Pont's new product, "Corfam," a poromeric shoe material. Corfam is said to be fully breathable, due to a microporous structure inherent in the material. According to Eaton, shoes of Corfam literally shrug off the weather, being unaffected by sun or rain, hot or cold weather or even repeated golf games in dewy grass. After drying out, the material will not stiffen or crack. The material also is scuff and abrasion resistant, according to the manufacturer. The shoes come in both grained and smooth surfaces in both brown and black.



## Clay Named General Manager of Dunlop Sports Division

Vaughn H. Clay, former assistant vp, has been promoted to general manager of the sports division by Dunlop Tire & Rubber Corp. This is a newly created position. Clay now supervises both the sale and manufacture of Dunlop's golf and tennis products. He has been with the company for 34 years, many of them in a managerial capacity in Westminster, S.C. and Buffalo, N.Y. Clay is a graduate of Bowdoin College. As general manager he is assisted by O. D. Ellis, Paul R. MacDonald and Robert J. Goehle.



Clay

## ALFRED H. TULL GOLF COURSE ARCHITECT

Member

American Society of Golf Course Architects

LARCHMONT, N. Y.

TEL. TE. 4-4017

## GOLF RANGES MINIATURE COURSES PAR THREE GOLF CLUBS

EASTERN HAS  
EVERYTHING

Complete line  
of golf balls,  
equipment  
and supplies  
You name it,  
we've got it!

Free Illustrated Catalog On Request

## EASTERN GOLF CO.

2537 BOSTON ROAD • BRONX 67, N.Y. Dept. G

## GOLF COURSE CONSTRUCTION

By CONTRACT

## MADDOX CONSTRUCTION COMPANY

Since 1923

FREE ESTIMATES. COMPLETE  
FACILITIES. GUARANTEED WORK

Phones: TREmont 9-3843  
HICKory 2-2411  
584-0315

Batavia, Ill.  
Danville, Ill.  
St. Charles, Ill.

Buyers' Guide • P 127

Full Line of

# GOLF Equipment Supplies

- Golf courses
- Miniature courses
- Driving Ranges
- Par 3 Courses

Serving only  
the West

*Western*

**GOLF SALES, INC.**

1831 Colorado Avenue

Santa Monica, Calif. Phone Area 213 451-1464

## PAR • HOLE • YARDAGE MARKER



Made to your specifications. 14"x7" Green and White die embossed steel, including 26" stakes, cad plated bolts and nuts.

Set of 9 ..... \$44.00  
Set of 18 ..... \$88.00

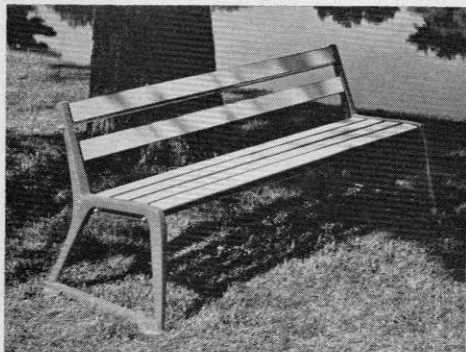
Standard wordings, 10" x 7": OUT OF BOUNDS,

REPLACE DIVOTS, etc. \$1.60 ea. Hole numbers 1-9 \$13.75; 1-18 \$27.00; 26" Steel Stakes .60 ea. Write for golf catalog, traffic sign catalog.

**GRIMCO • 8105 Rosalie • St. Louis**

### Plastic Adds Protection to Par Aide Benches

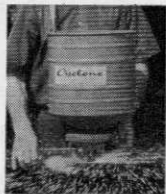
For added protection against weather, wear and spike marks, two models of back rest benches, made by Par Aide Products Co., 296



N. Pascal St., St. Paul 4, Minn., are available with plasticized seat and back. Six-foot benches (BRB-1 and BRB-2) can be ordered with 1/8 in. high impact plastic laminated onto plank surfaces. The plastic has a mottled finish and is beige to complement any frame color. Back and seat planks already in use also can be plasticized.

### Hand-Held Spreader

A broadcast spreader with extra high capacity is offered by the Cyclone Seeder Co., Inc., Urbana, Indiana. Cyclone Model 57 Broadcast Hand Spreader has a corrosion resistant, galvanized steel hopper finished in baked enamel which slopes at the bottom to a self-agitating feed outlet. Said to be quick and easy to load, the spreader stands upright while being filled. The hopper has a 50-pound capacity for pelleted or granular fertilizers. According to the manufacturer, the model can spread grass seed in a uniform pattern up to 8 feet wide and pelleted fertilizers up to 28 feet wide.



### Practice Club Reflects Proper Swing

The Private Pro, a practice-training golf club with a stainless steel hinged shaft, is being marketed by the Private Pro Co., 1004 E. Jefferson Ave., Detroit 7, Mich. According to the manufacturer, the club breaks or unhinges when not swung properly, but holds firm and hits the ball when swung correctly. It can be used interchangeably in actual play with regular clubs.

## HIGHLAND COLONIAL BENTGRASS

for

Greens • Tees • Fairways •  
and Rough

Use it alone or in mixture with Oregon-grown Fine Fescues and Bluegrass. We would be happy to assist in a trial seeding. For Information, Write:

**OREGON HIGHLAND  
BENTGRASS COMMISSION**

1213 Tyler St. Corvallis, Oregon



Yes, **WE**  
Make the  
finest

*Custom Made clubs  
for the man who wants  
to improve his game!*

WRITE FOR FREE ILLUSTRATED CATALOG DEPT K.

**Bert Dargie  
GOLF CO.**

3030 SUMMER AVE.  
MEMPHIS 12, TENN.



## LOCKER NAMEPLATES

GREETER PINS



Samples and prices on request

## KIRSCH CARD SERVICE

Box 222X, Villa Park, Ill.

### Country Club Shower Head Has Sensitive Adjustment

The "Country Club" shower head, distributed by Bel-Aire Sales Corp., 1109 W. 7th st., Los Angeles 17, Calif., features a "dial-your-spray" adjustment that quickly gives a needle fine to coarse rinse spray. The chromium plated, 24-carat gold spray attachment is guaranteed not to clog. It screws on to the shower fixture and is said to fit any pipe. Packaged in a gold-wrapped box, the Country Club is said to make an excellent gift.

### Trade Briefs

Wilson Sporting Good Co.'s 1964 Professional Golf Catalog has been shipped to golf professionals. The company just celebrated its 50th anniversary in the sporting goods industry . . .

Charles A. Eaton Co., manufacturers of Etonic golf shoes, has moved into the firm's new factory in Richmond, Me. Home offices and shipping department will remain in Brockton, Mass. . . . Bristol Pro-Golf, Inc., Melrose Park, Ill., is constructing a central manufacturing and warehouse plant which will double its present space. The West Coast will still be served through the Los Angeles, Calif., warehouse, and the East Coast warehouse will remain in Whiteside, L.I., N.Y.

## MAGIC FLUFF

Floor Covering  
Spike Resistant

NEW  
MAGIC FLUFF

Tee Mats  
Keeps clubs from marring.

## H. M. WISE

212 Helen Ave., Mansfield, Ohio

## For the BEST of the LATEST in RANGE-PAR 3-MINIATURE

Equipment — Supplies — Fixtures  
Consulting & Contracting Services

Write for complete catalog

## WITTEK

## GOLF RANGE SUPPLY CO., Inc.

5128 W. North Ave. Chicago 39, Ill.

Walter Hagen Golf recently announced the availability of its 1964 catalog . . . According to Victor Comptometer now accounts for 17 per cent of all golf balls sold in the U.S. Brands include Worthington, Les Strokes, PGA, Tommy Armour, and Lady Diana, plus many private labels. The golf division is Victor's fastest growing department with the current sales of \$5,500,000 expected to reach \$10 million by 1965.

Kent Sales & Manufacturing Co., Inc., Kent, Ohio, has announced the development of the Kent Shag Tube. The 38-inch, styrene plastic tube picks up as many as 23 balls and stores them for practice . . . Tri-State Lawn & Golf Supply, Inc., Cincinnati, O., has been named distributor for Jacobsen Manufacturing Co. . . . It covers 19 counties in Ohio, Ky. and Ind., according to Mark Davis, manager of the Tri-State firm.

J. A. Williams Co., Pittsburgh, has set up a Toro Turf division, according to Frank H. Allen, sales manager . . . Its three sales engineers, David DelVecchio, Joseph C. Grant and Harry T. McCague, serve Western Pa. and West Virginia for Toro . . . Toro Manufacturing Co., Minneapolis, is building a plant in Riverside, Calif. for its subsidiary, Moist O'Matic, Inc., which will be completed next month . . . It will provide 31,000 sq. ft. of floor space and is located at 5825 Jasmine st.

### RYANS O.K. No. 4 SEEDER & SPREADER 4 Cu. Ft.(300 lbs) Capacity-3 ft. Spread



No Holes to Clog.  
Quick Shut-off Lever &  
Adjustable Gauge.  
Screw On Handle  
Spread Top Dressing.  
Nitro-Humus, Peat,  
Commercial Manure  
& Other Materials  
Successfully  
Weighs Only 69 Lbs.  
Write Dept. "G"

DEALERS WRITE FOR OPEN TERRITORIES

H. & R. MFG. CO., Los Angeles 34, Calif.



## FROM PLANNING TO PLAY

A Complete Construction Service from Golf Course Specialists

• Consultation • Design • Irrigation • Landscaping • Construction

**D. J. WESTERGARD, Inc.**

TUTTLE ROAD

PHONE 757-0440

WATCHUNG, N. J.

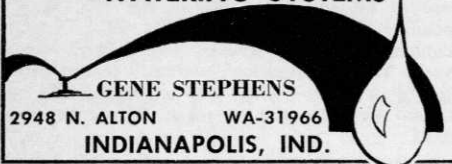
### ROBERT E. CHAKALES

*Designer & Builder of  
Championship Par 3 Golf Courses*

Richmond, Virginia

Phone: AT 88289 • 8804 Brawner Dr.

### WATERING SYSTEMS



2948 N. ALTON WA-31966  
INDIANAPOLIS, IND.

### WELTON and COLLETT GOLF COURSE ARCHITECTURE

5646 Chelsea Ave., La Jolla, Calif.

*Continental Experience*

Area Code: 714

Kenneth Welton 454-5719 Don Collett 435-9485

### CHARLES E. STEWART

**GOLF COURSE  
IRRIGATION ENGINEER**

Reports • Design • Supervision

18357 Homewood Ave., Homewood, Ill.

Phone: SY 8-3918

### Samuel S. Mitchell

*Golf Course Architect  
Designer and Builder*

18 Old Randolph Street

Canton, Mass. Tel. 617-828-1065

**golfway inc.**

**COMPLETE GOLF COURSE  
CONSTRUCTION & LANDSCAPING**

4324 Webster St., Dayton 14, Ohio; 513-275-9543

### Personnel News

Certain-teed Products Corporation has named Joseph De Luca Quality Control Engineer of its Pipe division. He replaces William A. Hild, Jr., who has been promoted to manager of quality control . . . Recent additions to the PGA Golf Equipment Co. staff are Robert Bonamy, appointed sales manager, Robert J. Berns, named



DeLuca



Berns



Bonamy



Moffett



Kee



Vaccarelli



Sinard



Border



Morris

advertising manager, Jack Schnaedter, the new sales administrator, Al Armstrong, in charge of all iron club manufacturing, and Carl DeVries, supervisor of wood club manufacturing . . . Jacobsen Manufacturing Co. of Racine, Wisc., announced the appointments of Stephen V. Moffett, James N. Kee, and Robert A. Vaccarelli. Moffett, formerly assistant commercial products manager, has been named sales engineer. Kee is assistant commercial product manager after being an assistant in public relations. Vaccarelli joins the company as an assistant public relations manager.

General Battery & Ceramic Corp., Reading,



## PIER 39

THE EMBARCADERO • SAN FRANCISCO • LANDSCAPE ARCHITECT • SITE PLANNER  
SUTTER 1-2997

## ROBERT MUIR GRAVES GOLF COURSE ARCHITECT

Pa., has named John R. Tench vp, industrial sales division . . . Henry L. Sinard is Michigan district sales manager in charge of Flintite asbestos-cement pressure pipe for Orangeburg Manufacturing Co., a division of the Flintkote Co. Sam J. Beman recently was named to represent DiFini Originals and DiFini Knitwear exclusively in the states of California and Nevada. John Bright has been chosen for the same job in Colo., Wyo., Utah, N. Mex., and Ariz. Dennis Iden now represents DiFini in Fla., Ga. and Ala. . . . A new member of the DiFini staff is Paul Hahn, the trick shot artist.

John A. Bowers, James L. Joplin, and Martin A. Rudnick, Jr., have joined the consumer products division of Velsicol Chemical Corp. as marketing specialists . . . Jack H. Krause is a new addition at Mallinrodt Chemical Works. He's the director of commercial development for the firm's industrial chemicals division . . . Cushman Motors, a Lincoln, Neb. division of Outboard Marine Corp., has appointed Curtis T. Morris vp and general sales manager, and Vaughn E. Border director of sales and advertising.

Paul Gibbs, vp and a 25-year veteran of Dunlop Tire & Rubber Corp. sports division, suffered a fatal heart attack last fall. Gibbs was a director of the finance committee of the National Golf Foundation. Paul worked in Dunlop's Richmond, Atlanta and N.Y. offices.

### You've Been Around If You're Listed Here

Toro Manufacturing Corp., Minneapolis, which just celebrated its Golden Anniversary, has issued Old Timer certificates to its honor role of supts., who have used Toro power mowers and tractors for more than 40 years and are still active. The list includes: W. H. Brinkworth, Sr., Derrick Golf & Winter Club, Edmonton, Ala.; Jack Melville, Horsham Valley CC, Dresher, Pa.; Jim Vigilotti, Indian Creek CC, Miami, Fla.; Leo Feser, Orono GC, Wayzata, Minn.; Ray Gerber, Glen Oak CC, Glen Ellyn, Ill.; Carl Bretzlaff, Broadmoor CC, Indianapolis, Ind.; Severin Loeffler, Sr., Washington, D.C. and Emil Picha, Oak Ridge CC, Hopkins, Minn.

### Trans-American Widens Service

Trans-American Van Service, 7540 S. Western Ave., Chicago, Ill., has received permission from the ICC to transport golf cars between all points in the continental U.S. According to a company spokesman, this will enable the golf car industry to ship from 20 to 30 cars per load throughout the U.S. without costly crating and packing.

## WILLIAM JAMES SPEAR GOLF COURSE ARCHITECT

1309 W. MAIN STREET  
ST. CHARLES, ILLINOIS



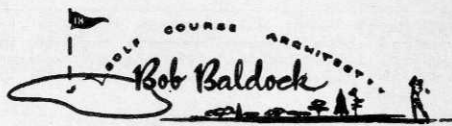
JUNO 4-6340

## ALEXANDER G. McKAY Golf Course Architect

Complete Planning at Site  
Design and Construction

Phone 586-5467

P.O. Box 1341  
Morristown, Tenn



1505 BLACKSTONE  
FRESNO, CALIFORNIA

Phone: AMherst 4-1521

## HORACE W. SMITH GOLF COURSE ARCHITECT Quality Construction

Phone: 584-6101

Worcester, Pa.

2 miles from Norristown, Pa.

### THE PERFECT PACKAGED SHELTER!



100%  
STEEL

\$198.

FREIGHT PAID

KWIK-BILT, INC. Box 6834, Dallas 19, Tex.

## GOLF COURSE IRRIGATION ENGINEERS & INSTALLERS

Any Phase or Complete Turn-Key Jobs

McCune & Company, Inc.

3721 Mahoning Ave.,

Phone: SW 9 3231

Youngstown 9, Ohio

## MANUFACTURER'S REPRESENTATIVES WANTED

- 'Crookshank' custom-crafted British golf clubs.
- Stocked in U.S.A. Three-week delivery on specials.
- First major design change since the steel shaft.
- World-wide patent coverage.
- Pro only policy.

Contact: Anglo Burton Corporation,  
Box 242, Middlefield, Ohio.

**FOR SALE — LPGA APPROVED 18-HOLE COUNTRY CLUB.** Bids invited on 6300-yard, 18-hole, par 72 Sunnyside Country Club, Waterloo, Iowa. Club planning new location. Sunnyside held LPGA women's Open last 6 years. Excellent private fee opportunity. No private fees courses in area. 87,325 rounds played yearly on 2 municipal courses. Metropolitan area 127,200, including 5,000-student State College. 2 bars, 2 lunch rooms, large dining room, ballroom, modern kitchen, china and linen service, 2 swimming pools with complete filtration. Liquor license available. For bid specifications, contact Jack Swinehart, vice president, Sunnyside CC, Waterloo, Iowa. Phone 233-3501 (Area Code 319).

**GOLF BALL MFR.** wanted. Will purchase small mfr. located in EAST. Address Ad 121 c/o Golfdom

**For Sale — 8 Victor, Model 3200 Electric Golf Carts,** with bucket seats and push button switches and automatic chargers. Used only one season. Good condition, \$450.00 each. Contact Appliance Buyers Credit Corp., 242 Pipestone Street, Benton Harbor, Michigan. Phone 616 — WA 7-3556.

**For Sales — 20 Nassau, Model 70 Golf Carts.** Used only one season. \$450.00 each. Stored in Chicago Area. Contact: Appliance Buyers Credit Corp., 242 Pipestone Street, Benton Harbor, Michigan. Phone 616 — WA 7-3556.

Responsible party wishes to buy or lease golf course. Send all particulars first letter. L. D. O'Connell, 743 Vermont, Gary, Indiana.

**For Sale — 19 used gas golf carts — Joliet Country Club, Joliet, Illinois, Telephone 815-727-3677.**

## Things A Supt. Should Know! How Do You Rank Them?

Divot News, publication of the Southern California GCSA, lists in order of importance the things that a supt. should know about course maintenance and golf in general. The list is from a consensus of members — Business knowledge; Fertilizer knowledge; Grasses; Water management; Mechanical knowledge; Personnel management; Knowledge of golf—rules, play, handicap, rating, etc.; Control of insects; Control of weeds; Control of disease.

## Wilson Executive Bag Line



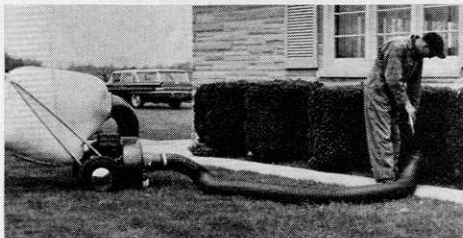
Wilson Sporting Goods Co's 1964 line of bags are designed to fit every level of taste and budget. The Executive Sets are said to represent the ultimate in materials, design and craftsmanship. They feature an extra large keystone style stepdown top ring, full length grommeted club dividers and specially molded plastic compound bottom. Carry-alls and shag bags, of the same luxurious leather, complement the golf bags.

## Photogrammetry Buys Graph-Check

Graph-Check, Inc., which developed the sequence camera, widely used by pros in teaching, has been purchased by Photogrammetry, Inc., 12230 Wilkins ave., Rockville, Md., according to Gomer T. McNeil, president. Photogrammetry, which has specialized in photo instrumentation since 1953, designed the Graph-Check camera and has been a prime contractor in its manufacture. The camera is distributed by the Arnold Palmer Co.

## Does Thorough Cleaning Job

Parker Sweeper Co., Springfield, O., now markets a vac (PV633ORH Vac 35) with a new hose attachment that is said to solve every cleaning chore. It has a quick-disconnect intake



housing for easy installation of a flexible hose. The hose can be used to clean around flower beds and shrubs, inside window wells and in similar areas that are hard to reach. The new machine has the same design, construction features, etc. as other VAC-35 models.

## Spalding's Profits Up

For the year ending Oct. 31, A. G. Spalding & Bros., Inc., had net earnings of \$2.17 a share for 970,000 shares as compared to 73 cents in 1962. Consolidated net earnings for 1963 were \$2,104,684 against \$713,378 a year ago. Part of the increase in earnings was reflected by a gain on the sale of Spalding's British properties and a gain on the divestiture of the Rawlings div. and related subsidiaries.