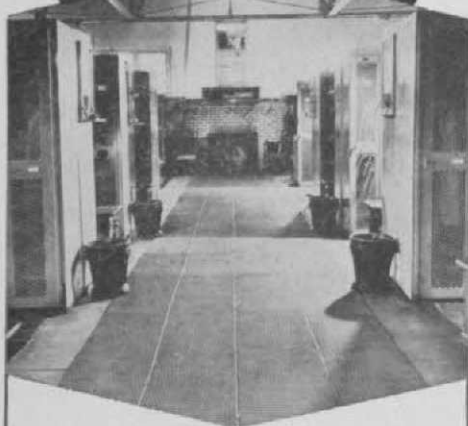


*Stop
Worrying
About
Accidents
resulting from slipping*

PREVENT THEM
WITH SPIKE-RESISTANT
DO-ALL
Cross Rib
RUNNER MATTING



Ideal for locker rooms, washrooms, lobbies, back of counters, at drinking fountains, and for carpet protection. Affords unequaled resistance to scoring, denting and puncturing. Good scrapeage for dirt removal when used at entrances. Easy to clean. Sides beveled. A variety of colors and widths.

Send for catalog sheets and prices.

AMERICAN MAT
CORPORATION

1802 Adams Street • Toledo 2, Ohio

"America's Largest Specialists in Floor Matting"

Superintendents Did Fine

(Continued from page 24)

and women members while being toughened for the long hitters.

The Aronimink budget is "\$50,000 plus," Elliott says, pointing out that the budget has to be elastic because it is difficult to determine exactly what is a course expense and what is a ground expense.

44 Traps Knocked Out

In getting ready for the PGA championship Aronimink eliminated 44 traps, a few others were lengthened, several tees changed and borders of a lake altered. There was no interruption of play during construction work. Elliott says Baskin planned and accomplished the reconstruction so well that inconvenience and unsightliness of this sort of work were minimized.

In the autumn of 1961, Baskin put Agrico at the rate of 500 lbs. per acre on Aronimink's fairways and tees. In the spring he applied 400 lbs. per acre of Milorganite.

Aronimink's fairways usually are cut at 1/2 in. For the PGA championship the fairways were cut a trifle higher than 1/4 inch.

Baskin applied about 100 lbs. Milorganite to each of his greens early in April and repeated the fertilizing a month later in mid-June. He gives his greens a combination of Tersan and Calo-Chlor once a week; maybe twice a week in August or in other hot, humid periods.

His greens normally are cut at 3/16 in. For the PGA tournament the cut was 1/8 in.

Looks Like A Boom

So much golf course building is in prospect that some prominent architects are telling eager potential clients they'll have to wait. City of Westbrook, Me., for example, asked Geoffrey S. Cornish to inspect and report on site for municipal course but Cornish declined. "Too busy," he said. Addition of nine holes to existing nine or 18-hole courses is a feature of the current course construction activity. Many of these additions being built by supts. who already are working long hours in course management. Some of the additional nines are being built for less money per hole than the original courses.