

SWINGING AROUND GOLF

NEWS OF THE GOLF
WORLD IN BRIEF



By HERB GRAFFIS

Oakland Hills set a new record for the National Open . . . Three days attendance was 47,915, with Saturday drawing a record 20,439 paid . . . Previous record was at Cherry Hills, Denver for the 1960 Open . . . That paid gate was 43,878.

The 61st National Open was smoothly run by Oakland Hills' organization headed by Judge John P. O'Hara as gen. chmn. and the club's pres. Joseph H. Carey . . . Program was a fine looking job . . . Al Watrous became the first to be pro as his club was host to three National Opens (1937, 1951 and 1961) . . . Mgr. Clyde Cyphers had clubhouse food and drink service as good and fast as ever has been seen at the Open, maybe better . . . Supt. Howard Jones and green chmn., Lew W. Smead, were rewarded for their work and worries, the course being in perfect condition.

Shortage of growing weather in spring called for an intensive program when conditions were favorable . . . Jones came close to a collapse . . . Ernie Shave, a son of the great, late Herb who was Oakland Hills supt. for years, came back to help Howard . . . Ernie and Howard were students of maintenance under Herb at Oakland Hills.

Pro shop business up to June 10 in many sections has been hurting but store business in the same territory has been murdered by the weather . . . One prominent pro in the Southeast told Golfdom that his shop business through May was 10 per cent ahead of 1960 which was his top year . . . Several pros in California have reported that first half of this year

will show satisfactory shop business but not top figures . . . Golf apparel and shoe business in pro shops is up to par, club sales are better than expected but ball sales at pro shops have lagged on account of May cold, wet weekends in several districts.

Some pros with whom we've talked and written about shop business the first part of this year have said that the pro rather

FRONT COVER

Sam Snead prepares to finish his winning performance at Dorado Beach, Puerto Rico, in the International Golf Association championships played in June. His partner on the triumphant U. S. team, Jimmy Demaret, has just completed his labors. The U. S. total of 560 won the Canada Cup. The Australian team of Peter Thomson and Kel Nagle was second, 12 shots back. Snead's 272 was eight strokes under Peter Thomason's second-place total. It was the fourth consecutive IGA tournament win for Sam. Pro stars of 33 nations competed at Laurance Rockefeller's superb course.

Photo by Bill Mark

than the weather determines the sales volume . . . One pro told us he had sold 14 sets of irons before he saw the sun at his club this spring . . . It was welcome money, he added, but it was hell on the carpeting in his pro shop . . . Everybody played their new clubs inside.

Bad spring weather isn't the fatal thing it used to be for pro business . . . Recently, in late summer, pros in northern and cen-

Lewis Line



✓ NEW LEWIS WASHER

- ✓ Proven Paddle Action
- ✓ Wear Resistant—cast aluminum alloy case, nylon brushes
- ✓ Maintenance-Free
- ✓ Economically Priced
- ✓ "Piggy-Back"! New Lewis washers can be dual-mounted
- ✓ NEW CATALOG—describes complete Lewis Line. Send for it today!

CONTAINER DEVELOPMENT CORP.

MONROE STREET • WATERTOWN, WISCONSIN

tral states have been doing well in close-out sales . . . Spring golf business goes up and down but the golf Christmas gift business at pro shops continues to get bigger each year.

Shell Oil company is figuring on a television program showing great golf courses around the world. Formula for the program isn't set yet but it is expected to be combination sports, travelogue and people-to-people picture . . . Tournament players are eager to get on . . . Player and Palmer have the call among U. S. pros, of course, and PGA tournament bosses won't dare louse up this one . . . They want to get in . . . Sarazen will do the commenting . . . Tommy Armour turned down the offer . . . Joe Dey helped in selection of the courses . . . Herb Wind is writing the script.

PGA tournament management has established some sort of a record in running off three sponsors who have spent more than \$1,000,000 each on pro golf . . . Frank Pace, jr., head of General Dynamics, gets a bellyful of PGA tournament officials' demands to dictate to him and officials of golf associations in Canada Cup host countries . . . So he passes the International Golf Assn. tournament job he inherited from the late John Jay Hopkins

REPLACE WITH BOWERS BIG RAM BATTERIES

... and end your GOLF CAR
BATTERY Troubles

Forty years' experience building quality batteries for battery-driven equipment—industrial material handling trucks, mine locomotives, mine shuttle cars—is built into every Bowers Golf Car Battery. You can be certain your current battery problems will end when you change to Bowers Big Ram Batteries. Their Extra Quality means Greater Power, Longer Trouble-Free Life . . . and at a lower initial cost.



BOWERS

BATTERY & SPARK PLUG CO., READING, PA.

PLANTS AT: Reading, Pa., Greer, S.C.; New Philadelphia, Ohio

BRANCHES: Macon, Charlotte, Baltimore, Philadelphia,
New Haven, Buffalo, Pittsburgh

see "U.S." when it rains!



NEW U.S. RAYNSTER®

Lightweight, action-cut jacket—You're as free to swing as if the sun were out! Because the Raynster "Fairway" jacket is designed to give you maximum room to move. More, it's light and quiet—a soft, supple vinyl with a fabric feel. In beige. Sizes: S, M, L, XL. Only **5.95**



NEW U.S. PAK-A-WAY

Lightweight, flexible, tough—Now, the popular Pak-A-Way in a golfer's model! Made of a great new material that's so light you barely feel it. And so flexible it fits slickly over your shoes—folds flat, fits into your pocket or bag. Molded cleats. M (6 to 9) and L (9 to 12). Only **3.95**



United States Rubber

Rockefeller Center, New York 20, New York

over to Sports Illustrated . . . Pace joins George S. May and Elmer Ward of the Palm Beach company as good providers who paid out a million or more, each, to promote tournament golf and received incredibly stupid and greedy treatment in return.

Laurence Rockefeller who had spent \$50,000 on tournament at his guests at Dorado Beach, Puerto Rico, when Dorado Beach hotel and course were new, also got a bad taste of PGA tournament mismanagement when he was put among those in the middle by the mess stirred up when Palmer, Player and Leonard were kept out of the Canada Cup tournament and Memphis Open tournament officials learned only a couple of weeks before starting time of conflict with Canada Cup matches, over 2000 miles away . . . There is no excuse for PGA tournament officials allowing that controversy to pop up at a late date . . . Cancellation of the Oklahoma City tournament when tournament players had been booked for a pro-amateur affair at Detroit compounded the confusion caused by PGA, the tournament chiefs' peculiar performance.

Stardust GC in Las Vegas to play host to Ladies PGA, Oct. 11-15 . . . Prize

Drive in a LONG PROFIT
with

NEW knitted CLUB SOX
in Washable Hi-Bulk Orlon
For Nos. 1, 2, 3, 4, 5 Woods

Packed BULK, in any assortment you specify

Handsome! Handy! Popular-priced! Brand-new CLUB SOX are just what your golfers want to protect their favorite woods, and to give to friends. Order your fast-selling stock now — in Fairway Green, Sapphire Blue, Old Gold, Flag Red, Jet Black, Tobacco Brown . . . with white number striping and 2-tone Pom.



Your Cost, \$1
each Club Sox
3/10 F.O.B.
Milwaukee
Immediate Shipment

RELIABLE
Knitting Works
Milwaukee 5, Wis.

Write for literature

A "SALES TESTED"
NEW GAME SENSATION

Galloping Golf



EXCITING! ACTION!

ENTERTAINING!

FUN-LOVING ADULT GAME

... PLAYED WITH DICE

Catching on like wildfire!

Market-tested! Acclaimed by all sports lovers! Get your share of the large profits made possible by the rapidly increasing demand for the sensational new game, GALLOPING GOLF.

Fast! Easy to play! Has all the side action of golf . . . can be played by any number. You'll feel the thrill of getting 300 yard drives . . . birdies . . . one putts . . . sand traps . . . and all the others.

Attractively packaged in an "eye-catching," "sales-making" multi-color display carton . . . complete with professional type dice cup, 5 easy to read different colored dice, pad of 25 score sheets and rules of play.

To Be Nationally Advertised In
Consumer Publications.

CONTACT YOUR JOBBER TODAY OR WRITE:

GALLOPING GAMES, INC.

DEPT. GO
461 E. OHIO STREET
CHICAGO 11, ILLINOIS

money will add up to \$15,000, largest amount the gals will play for this year . . . Event will officially open Las Vegas' newest 18-hole course which will be finished just in time for the tourney . . . U.S. defeated Canada, 7½ to 4½, in fifth annual Carling Cup matches, played in June at Old Warson CC in St. Louis . . . This was third straight U. S. victory in program affair that was begun in 1957 . . . Canada won the first two matches . . . Doral CC, being built near Miami's International Airport, will be scene of \$50,000 PGA tournament in 1962 . . . It's scheduled for Mar. 21-25 and will be the biggest event dollarwise that Florida has yet offered.

Mid-July opening scheduled for first 9 of Cape Coral County (Fla.) 18-hole layout . . . Dick Wilson designed the 6,600 yd. course . . . Ed Caldwell, formerly at Dublin (Ga.) CC, has been named pro . . . Western Junior to be played Aug. 15-19 on Michigan State U. campus, East Lansing, Mich. . . It's open to any boy 19 or under with handicap of 10 or lower.

Gene Carver and Don Houston begin building first 9 of their semi-private Kentucky GC at Coos Bay, Ore. . . Start work

Service

—to the

GOLF PROFESSIONAL

**HORNUNG'S PRO GOLF
SALES, INC.**

Fond du Lac, Wisc.

P
R
O
-
G
R
I
P



"Greatest
of
Them All"

is prepared especially for the leather grips of Golf Clubs. It gives a firm, tacky grip with light hand pressure, permitting an easy relaxing rhythmic swing. Your Accuracy will improve, you'll feel relaxed — and those "Extra Strokes" will vanish.

Manufacturers' Specialty Co. Inc.

2736 Sidney Street • St. Louis 4, Missouri

on Clearview CC, Montville, N. J. . . . Hal Purdy is architect . . . Elliott Kepler is in charge of construction . . . Ronald D. and Lois Hagen of Hanover, Ill., buy Palisades CC, Savanna, Ill., from George Field . . . The Hagens are operating the course . . . Bruce Irwin building 9-hole Thunderbird GC, South Glens Falls, N. Y.

MacLadsbrae CC 18 plans of Geoffrey Cornish to be built at Keene, N. H. as feature of new subdivision . . . Developing company is Horatian Park Associates, Inc., Harry W. Kent, Surrey, N. H., pres. . . . Joe Allen, John Coyle and Dick Hamilton building first 9 of Hills and Dales GC at Palm View near Bradenton, Fla. . . . Wm. Palmer building 9 hole course north of Parma, Mich. . . . Floyd Hammond, supt. at Sharp Park course, Jackson, Mich., for 20 years, working with Palmer on design and construction of the course.

Singing Hills CC to have 18 adjoining Singing Hills housing development at Dallas, Tex. . . . Milo Clark, active in Dallas amateur golf for years, will be singing Hills pro . . . Clark and Bob King are designing the course . . . Bill Bell designs 18 to be built by Idaho Falls (Ida.) CC; J. M. Parkinson, pres. . .

"6-12" takes the bugs out of your players' game!

Do your players a favor: Sell "6-12" for long-lasting protection against mosquitoes and other biting insects. Golfers just spray on exposed skin and clothing before teeing off. Aerosol spray can slips handily into golf bag.

You'll make extra money with "6-12" Repellent, too. It's America's best-selling insect repellent—advertised on 7 top TV network shows. Also available in stick, liquid, lotion. Order now.



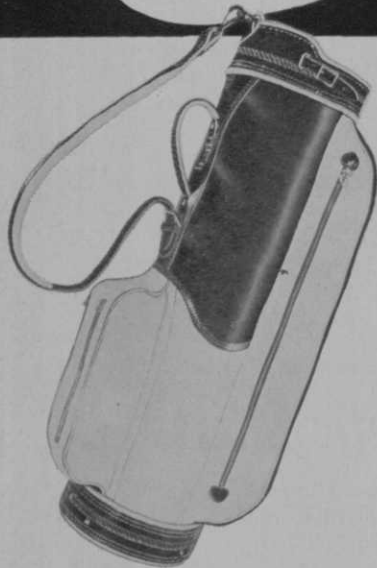
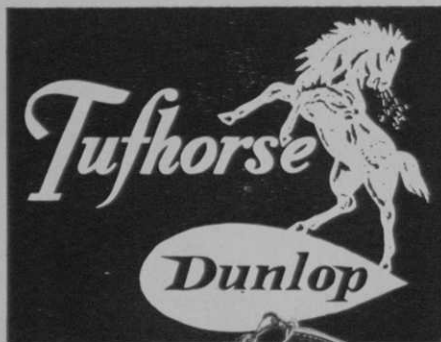
5 OZ. AEROSOL SPRAY—
SUGG. RET. \$1.19



UNION CARBIDE CONSUMER PRODUCTS COMPANY

DIVISION OF UNION CARBIDE CORPORATION
NEW YORK 17, N. Y.





Most Famous of Them All

For over 40 years the Tufhorse label has stood for the finest . . . the pro's and player's assurance of exceptional quality. It's the greatest name in golf bags. See the complete Tufhorse line at your Pro Shop today.

Dunlop Tire and Rubber Corp.
Sporting Goods Division
500 Fifth Avenue, New York 36, N. Y.

Made by **DES MOINES GLOVE**
& Mfg. Co., Des Moines, Iowa

Herb Mason named pro-supt., Happy Valley GC, Wilson, N. C., by J. C. Eagles, jr., owner of the course which will be in play this summer . . . Mason has been in charge of construction of the course.

Lou Strong, PGA pres., says National Assn. for the Advancement of Colored People didn't tell the truth in its published statement that the 1962 PGA championship was withdrawn from Los Angeles because California's attorney general demanded that Negro Charley Sifford be permitted to play . . . Simple truths, says Strong, are (1) California's attorney general never made such a request of the PGA; (2) Cancellation of LA date for 1962 PGA had nothing to do with Sifford; (3) Negroes are eligible to play in the PGA championship if they meet the same requirements white professionals have to meet; (4) Sifford's playing record has not qualified him for this year's PGA . . . Those facts the NAACP could have learned at the price of a 4 cent stamp . . . In many years of covering golf I never have seen a Negro get poor treatment in a tournament with which the PGA, USGA or Western GA had operating responsibilities . . . All the Negro golfer has had to do

Slim-Line

ALUMINUM



FLAG POLES





HEAT TREATED — Aluminum alloy. 5 ft., 7 ft. or 8 ft. Red and White or Yellow and Black. Special ferrule (cut-away below) provides greater strength ABOVE the threads. See them at your distributor.

OVER 50 YEARS



STANDARD MFG. CO.
CEDAR FALLS, IOWA



PAUL HAHN Golf Glove

with
BALL MARKER*



FIRST CHOICE for BETTER CONTROL

Great for perfect grip and hand control from tee to green. Fits so snug, feels so light, exclusively styled to end bulging and ballooning. Made of soft imported capeskin with "tacky" finish. All colors and sizes for Men and Women; Left or Right. Also Men's Cadets.

* Ball Marker Snaps off to mark position on green.



\$4.00 AT PRO SHOPS

Free Illustrated Catalog on Request

PAR-MATE 10 West 33rd St.
New York 1, N. Y.

is to qualify for the competition in the same way the white golfers do and let his golf clubs talk for him.

Before yelling at officials of Aronimink GC, Philadelphia, site of the 1962 PGA, about the club "continuing the un-American practices of the PGA" the NAACP should have done something constructive by encouraging establishment of some first class Negro golf clubs in the way in which other American groups have formed and operated their admirable clubs in a self-reliant, independent American spirit . . . Now that Strong has put the record straight on Negroes in pro golf competition the NAACP may have some time loose to look into basketball.

Columbia G&CC, Hudson, N. Y., to add second 9 . . . Hal Purdy, architect . . . The Ledges, Fayetteville, N. Y., will have its first 9 in play next spring . . . James Wilson, Manlius, N. Y., is chmn., board of directors . . . Hillendale CC, Durham, N. C., remodelling course and selling former clubhouse site for residential building . . . Oconee CC, Seneca, S. C., adding second 9.

Golf pros are doing more and better

"CART-BAG'S Lightness Sells 40 to 50 per Year for Me"



Says —
R. A. SPENCER, Golf Pro
Morgantown, (W. Va.)
Golf and Country Club

"Since the introduction of the CART-BAG at my course, the old upright type cart is as out of date as the steam engine. On our rather hilly golf course the lightness of the CART-BAG has sold 40 - 50 carts per year for me. A shortage of caddies also prompted many players to discover that golf carts are no longer a burden that drains your pep. Only trouble your wonderful product has caused me is an accumulation of a 'junk yard' of old, heavy upright carts behind my shop."

There are many good reasons why CART-BAG is the Number ONE seller in Pro Shops from coast to coast. Give your members a chance to prove this — to your profit.

SOLD THROUGH
GOLF PRO SHOPS ONLY

Write for Complete Literature

SIT-N-REST GOLF BAG CORP.
637 E. Center St., Milwaukee 12, Wis.



CART-BAG

In FOUR NEW 1961 Models

- For 6 Irons, 4 woods "SPECIAL" \$32.50
- "COUNTRY CLUB" (with seat) . . . 36.50
- For 10 Irons, 4 Woods
- "MASTER SPECIAL" 36.50
- "MASTER" (with seat) 39.50

TROPHIES



... For your most important Tourney Flight Prizes — our highest quality non-tarnish silver plate, in four sizes, from 10" to 20" in height ...

We specialize in the very finest quality trophy awards for men and women golfers ... Also — trophies for ALL sports events!

Ask for special Pro Prices — Send for our BIG, 36 page Catalog TODAY!

SPORTS AWARDS CO.

Quality Awards — Quantity Prices

429 W. Superior St., Chicago 10, Ill.
Telephone: SUperior 7-6034

market development work than pros in any other sport . . . In addition to junior and women beginner classes almost every club pro is engaged in some recruiting and instruction job for the game . . . Hearing about noon lessons Frank Sposato, pro at Hauppauge CC, Northport, N. Y. is giving at a Northport restaurant, reminds me that pros in smaller towns usually are major factors in building their clubs by their free golf lessons and missionary work.

Paul N. Voykin now supt., Briarwood CC, Deerfield, Ill., a course designed by Colt and Allison and built as Briargate CC in the late '20s . . . Voykin came from Calumet CC (Chicago dist.) where he has been succeeded as supt. by Charles Martin . . . Sam Kinder is new pro at Water Gap CC, Delaware Water Gap, Pa. . . . Waller Hickman now mgr. Casa View CC, Dallas, Tex.

Dave Del Vecchio supervising construction of Eden Roc CC at Monroeville, Pa. (Pittsburgh dist.) and will stay on as supt. . . . Ernest Gatta, Asbury Park, N. J., and Bob Sandler, Des Moines, Ia., who have won U. S. National Amputee Golf Assn. championships play in the annual cham-



"CAP-GARD REMINDER"

New Profit Item for Pro Shops

For every golf club in the bag of every golfer.

Attractive green and white display carton contains 12 cards (5 black plastic caps to the card) and sells them for you!

PREVENTS UNRAVELING — PROTECTS OR REPLACES GRIP-END INSERT CAPS

GUARANTEED TO STAY ON GOLF CLUB WITHOUT GLUE OR TOOLS. EASILY INSTALLED

Improves the looks of any golf club.

Within one week of introduction, thousands being sold for every club in a golfer's bag.

Ready for immediate shipment by the carton or pack of 6 cartons.

Suggested retail price — \$1.25 per card. Write for special discount to pro shops.

PLASTI-GARD COMPANY

A Division of WATCO

3915 Tharp Street • Houston 3, Texas

NEW! HOLE-IN-ONE TROPHY

We Will Attach Your Winning Golf Ball Here



Golf Pros Honor Every Hole-in-One with this Inexpensive Trophy

XPW-31 Ht. with Ball 4 3/4". Genuine Walnut Base. Sunray Engraving Plate and Ball Stand **\$3.95**

Write for FREE Catalog.

Write for Pro Discount

THE TROPHY AND MEDAL SHOP

Dept. G-7

10 S. Wabash Avenue

Chicago 3, Ill.

Central 6-5018

pionship of the One Armed Golfers Assn. at Royal St. David's GC, Harlech, Eng.

Marion Reid in his 24th year as supt., Riverside CC, Berea, O. . . Harvey Conley graduates from jobs as asst. to Bud Geoghegan, Stan Mosel and Johnny Farrell to a pro job of his own at Newton (N. J.) CC . . . Pat (Rusty) Romano signed as pro at Somers (N. Y.) G&CC by Somers pres. Leon A. Katz . . . Romano has been asst. to Jack Patroni at Apawamis, for many years.

Walter H. Poff goes from pro job at Jefferson Hills CC, 9-hole club at Roanoke, Va., to pro post at Colonial CC, Roanoke . . . Robert Hill now mgr. Palatka (Fla.) G&CC . . . Jack McCready now pro and Ray McCready mgr., Payson (Ariz.) G&CC . . . Dan Graney now pro at Niagara County course, Lockport, N. Y.

Robert Treadway turns pro and is named to pro-mgr. job at Cleveland (Tenn.) G&CC . . . John Kolb, Salem, Ore., buys Oak Knoll GC near Salem . . . Chuck Davis remains as Oak Knoll pro . . . Bob Silvestri, northern California amateur star, becomes pro at 9-hole Cypress Hills

(Continued on page 60)

Longest "DRIVER" in your golf cars



Trojan Mileage Master Golf Car batteries are of special design for deep cycling and built for rugged service... you get:

1. More months of service
2. More rounds of golf
3. Special "Quick Water" vent caps
4. Service time reduced 75%
5. Lowest maintenance and monthly cost



TROJAN BUILT THE FIRST GOLF CAR BATTERIES.

"MILEAGE MASTER" features "QUICK-WATER" quarter turn vent caps

TROJAN GOLF CAR BATTERIES

TROJAN BATTERY CO., 724 E. 61st, LOS ANGELES 1, CALIFORNIA



Paul E. Weiss, Superintendent of the beautiful Lehigh Country Club, Allentown, Pa. has used Peters soluble fertilizer over the past 6 years with out-standing results. Paul uses it to get controlled feeding during the troublesome summer months, using it in light applications along with his regular preventive spray treatments.



PETERS



For An Outstanding Preventive Spray Program with Controlled Fertilization!



SOLUBLE FERTILIZER

18¢ PER POUND

300 POUNDS AND OVER
DELIVERED PREPAID
LESS THAN 300 POUNDS
F. O. B. ALLENTOWN, PA.

(ADD 3 CENTS PER POUND
WEST OF THE MISSISSIPPI)

Peters 30-10-10 soluble fertilizer is manufactured by the Robert B. Peters Co., Inc. leading soil fertility control specialists and consultants to the florist greenhouse trade, from the results of over 80,000 soil tests done by them over the past 15 year period. Peters 30-10-10 soluble is a completely sequestered (no-precipitate, no residue) type fertilizer that contains ALL REQUIRED TRACE ELEMENTS in a chelated (completely available) form. It is compatible with all commonly used spray materials and is most effectively used to supplement the regular preventive spray program to obtain controlled fertilization. It contains a most effective penetrating and wetting agent.

ROBERT B. PETERS CO., Inc. 2833 Pennsylvania St., Allentown, Pa.

Swinging Around Golf

(Continued from page 18)

course being built at Colma, Calif. . . . Cypress Hills will have 4 par 4 holes and 5 par 3s . . . Yardage will be 2,400 . . . Silvestri will continue to operate his range until Cypress Hills opens in 1962.

Floyd Hord named pro at new Oakdale (Calif.) G&CC . . . John Budd, recently appointed pro at Shawangunk CC, Ellenville, N. Y., was subject of big biographical story in Kingston (N. Y.) Freeman . . . Al Laney did a highly interesting series in N. Y. Herald-Tribune on history of club in New York metropolitan area . . . Anaheim (Calif.) Bulletin carries lively interview with Olin Dutra, recently named pro of Anaheim municipal course . . . First 9 of the Anaheim course opens this month . . . In the story Olin estimated that there are 50,000 sets of clubs in the Los Angeles area not being used because players haven't convenient playing facilities.

Valley-Hi CC, Sacramento, Calif., opens course . . . Bob Osborne is pres. . . . Interesting column on golf ranges by J. Suter Kegg in Cumberland (MD.) Times

. . . Gives some facts and figures on operation of Smouse Driving Range by Mr. and Mrs. Thomas J. Wotring . . . Lights usually are out at 11 p.m. but some nights play is heavy until midnight . . . Ball loss from the 700 doz. at the range is small . . . Confidentially, that's a high, genuine tribute to the honesty of Cumberland citizens . . . At many ranges loss makes you suspect the Forty Thieves are practicing.

George Gordon retires after 50 years as pro at Wannamoisett CC, Rumford, R. I. . . . At a farewell dinner George was presented with a check for \$7,000, retirement pay of \$3,600 a year but he had his old automobile taken from him . . . George suffered no pain about that . . . He got a new car as replacement.

Richmond (Va.) Golf Assn. junior championship and local qualifying round for National Jaycee Junior championship at Denver in August, combined . . . Number of pros remark that publicity on the mess that PGA tournament management made of the Memphis-IGA affair was bad for National Golf Fund Week which is a most valuable job for golf sponsored and operated by the PGA.

Dean Eagle, sports columnist, Louisville (Ky.) Times said in a great column on

public golf that the public course is taking a beating in Louisville because Jefferson County population has grown 58 per cent in past 20 years while area's golf facilities have increased only 16 per cent . . . One golfer told Eagle it took him 5 hours to play 9 holes at Cherokee . . . At Seneca, Louisville's only 18-hole course 1,410 played Saturday — Memorial day 4 days . . . Bill Moore, director Dept. of Parks says situation will be eased by Iroquois increasing from 9 to 18 and Seneca is restored to 18 from its present 14, providing road building doesn't cut down Seneca's 18.

Eagle says Louisville public course crowding have prompted building private clubs in the district . . . New private club is being organized by church groups in Louisville . . . Proposed new club will not sell liquor . . . With trend being toward smaller and simpler but adequate and attractive clubhouses it should be possible for a clubhouse to be operated without the members having to drink it into the black.

New York's World Fair in 1964 should have many golf tournaments . . . Fred Corcoran already had plans under way for 1964 International GA championship in N. Y. district before General Dynamics, angel of the IGA, signed off as a golf sponsor . . . USGA Open probably will go to New York Met district and PGA ought to be able to connect.

John M. Brennan, Long Island golf writer, says the island at the start of 1961 had 50 private and 20 pay-play courses and 20 more courses building . . . Brennan estimates that by 1964 Long Island will have a \$300,000,000 investment in golf club property.

Charles E. Croley recently joined the USGA green section as an agronomist . . . He is stationed in College Station, Tex. . . . Croley studied at Texas A & M and Virginia Poly Institute . . . Southern Louisiana field day to be held July 24 in New Orleans . . . William M. Amick, Ft. Walton Beach, Fla. architect, has 18 holes under construction in Pensacola, Fla. for the Chemstrand Corp. . . . It will open this fall with Andy Petnuch presiding in the pro shop . . . Other Amick jobs in process or the planning stage: 18 holes for city of Walton Beach; 18-hole Sky Lake in Highlands, N. C.; 9-hole course that is under construction in Greenville, O.; 9 holes for San Blas CC in Port St. Joe, Fla.



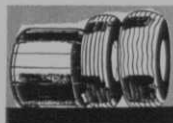
AMERICA'S FINEST ELECTRIC CAR

■ *New Battery Means UP to 30% More Distance. 4 Yr. Guarantee*



EZ-GO is first to feature powerful Exide Golfer Batteries. Boosts Distance up to 30%. Lease or purchase on 4-yr. basis with 4-yr. guarantee on lease.

■ *Now, Three Standard Tire Sizes*



Another EZ-GO first. Pro and club operators can choose the tire to fit the need—from Terra Tires, 600 x 6 or 800 x 6.

■ *Free 2-5 Day Factory Training*

The EZ-GO Factory Training Plan provides specialized knowledge of construction and maintenance obtainable in no other way. For a 2 to 5 day schedule, fleet owner furnishes transportation to and from Augusta, Georgia. EZ-GO pays trainee minimum hourly wage plus room and board. Arrangements should be made in advance.



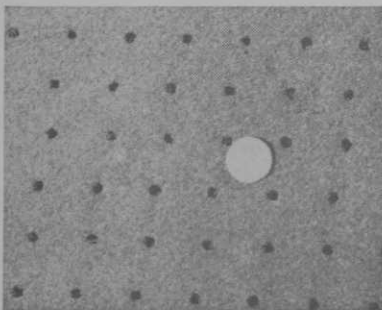
Flexible Finance Plan

Available on one to three year basis with, if preferred, no payments during winter months. Payments may extend conveniently through 12, 24 or 36 month period.

All Parts, Workmanship Guaranteed 1 Year. 3-Yr. Guarantee on Electric Motor. Up to 4 Years Warranty on Large Batteries.

*EZ-GO CAR DIVISION, TEXTRON INC.
P. O. Box 388, Augusta, Georgia*

150,000 Holes Per Green



● That's what you get with the RYAN Greensaire . . . the world's finest turf aerator. The Greensaire punches thirty uniformly spaced holes in every square foot of green . . . no need to go over the same area repeatedly in order to get the amount of aeration you want. Holes become invisible in less than one week.

Straight in-and-out operation of the smooth hollow tines eliminates all tearing around holes . . . leaves green in perfect putting condition.

Patented two-at-a-time feature insures maximum penetration of tines . . . gets more water, air, and fertilizer to the root zone faster.

Three size tines now available for all weather and soil conditions.

RYAN also manufactures the complete line of fairway aerators and renovators formerly made by Soilaire Industries. Write for full particulars and name of dealer in your area.



**LANDSCAPING
EQUIPMENT
COMPANY**

871 EDGERTON STREET • ST. PAUL 1, MINNESOTA

Greenville (Mich.) CC 9-hole course has undergone extensive renovation in the last year, according to Dick Whitelock, pro-mgr. . . . Three tournaments that have a big attraction for Western Michigan golfers are being played at Greenville this summer . . . Malcolm Shurtleff transferring from Iowa State to U. of Michigan where he will be connected with the agronomy dept. . . . Before departing, Iowa GCSA presented Shurtleff a watch in appreciation of the work he has done for the state's turfmen . . . Second \$5,000 54-hole Heart of Kansas pro-am being played at Elks CC and Salina CC, both in Salina, Kans., Aug. 25-27 . . . Tourney info can be obtained from R. E. (Bumps) Barnes, pro at the Elks CC . . . Farmington (Conn.) CC planning \$350,000 improvement program.

Harry Eckoff, East coast dir. for National Golf Fdn., who appeared recently on the Gallant Golf Guide, Washington, D. C.'s only TV golf program, has been in demand as a speaker at several events in recent weeks . . . He has addressed Mid-Atlantic supts., Northern Va. GCSA, Pittsburg GCSA and was on the program at the dedication of the new Montgomery County 18-hole course in

Rockville, Md. . . . Dave Kent, Northridge, Calif. architect, preparing plans for 18-hole course for Music Corp. of America in Universal City, Calif. . . . Recent Kent jobs include: 18-hole course for County of Sacramento, Carmichael, Calif.; 18-hole Reno, Nev. hotel course; El Niguel CC course in South Laguna, Calif., which will soon be put in play; Pemmar GC for City of L. A., which was recently seeded; and Valle Verde CC, 18-hole course, now under construction in Poway, Calif.

Long Island state park commission building 18-hole layout in Sunken Meadow park, Northport . . . Mendham (N.J.) G Tennis Club has 9-hole course under construction . . . Pinecrest golf center, Alexandria, Va., recently opened standard 9-hole addition . . . The center has an 18-hole Par 3 and driving range . . . Sportland, new lighted golf center near East Rutherford, N. J., now in operation . . . 70-tee double deck range among its features . . . Peach Valley CC, Spartanburg, S. C., which opened its first 9 last fall, working on second 9 . . . Ellis Maples directing design and building of Columbia (S. C.) CC that will run to 27 holes.

A male and female member of a four-some at Harbor Park GC, Wilmington, Calif., recently had aces on the same 165-yard hole . . . She used a driver and he did it with a 6-iron . . . Ed Cale has been named to succeed Bob Duguid as supt. at Timaquana CC in Jacksonville, Fla. . . Bob retired last spring after about 40 years in turf work . . . Jeromer Elmer and his team from Blue Hills won the 13th four-man team Heart of America GCSA tourney . . . Besides supt., the club pres., green chmn. and pro were members of each team . . . Brooks Road Par 3 in Memphis may be the longest lighted short course in the country . . . It runs to 3,100 yds.

Trends in golf business: Almost every new community of any size at all has to have a golf course . . . Design and construction of some of these courses is building in headaches the property buyers are going to have to cure . . . A few of the "retirement villages" seem to have the practical idea of putting 2 9-hole courses at opposite ends of the property, although supts. might not like that . . . However, in a number of new real estate developments golf course supt. is in charge of entire outside plant, including some contract maintenance of property buyers' lawns . . . This trend is calling for the supt. to grow as a business executive.

Looks as though summer resort property also

has got to have a golf course before it will sell . . . The increase in price of the resort lot and house pays for a pretty fair course . . . Majority of par 3s are 9 holes . . . People don't want to spend forever playing golf . . . Threesomes the first two days of the National Open took 4 hours 55 minutes to play 18 . . . No sense in that . . . One kid who scored well and attracted gallery lost it by playing so tediously he drove his well-wishers nutty . . . Time-killing didn't do him any good.

Some more trends: . . . Time clock control of watering systems growing tremendously . . . Apparently it means doing most of the course watering thriftily with the tricky areas being watered by manual control . . . Course design, even by the star architects who have accented back-breaking length, is switching to putting the emphasis on tighter trapping of greens on shorter holes so strong minds rather than merely strong backs have to solve interesting problems of well qualified architecture.

Still more of what looks to be the way the business is going: "Golf centers" are growing with conventional courses or Par 3s being tied in with bowling alleys . . . Consolidated Activities Inc., Livingston, N. J., owner of bowling centers in N. J., S. C. and Ga., has floated stock and bond issues and is buying more courses . . . That figures, with Brunswick buying MacGregor and American Machine and Foundry buying Hogan.

Jim Tood, asst. to Henry Picard in the winter at Seminole club, Palm Beach, named pro at

RAIN BIRD
presents . . .
TURF BIRD
a new concept*
in fairway watering

* **LIGHT** . . . Rugged, aluminum alloy construction makes the new Turf Bird a "Lightweight" . . . with "Heavyweight" power.

* **LOW** . . . a new, lower angle of trajectory (21°) assures uniform coverage even under windy conditions.

* **VERSATILE** . . . the exclusive, "Hi-Lo" nozzle permits *pin-point adjustment of area and amount of coverage* to suit any application. The new Turf Bird line includes a variety of sprinkler heads especially adapted for use with quick coupling valves for complete turf irrigation systems.

For complete details see your local Nelson-Rain Bird dealer . . . or write direct to

In Midwest and East:
RAINY SPRINKLER SALES
Div. of L. R. Nelson
Mfg. Co., Inc.
609 W. Lake Street,
Peoria, Illinois

In West:
NATIONAL RAIN BIRD SALES & ENGINEERING CORPORATION
P.O. Box 547,
Azusa, California



Turf Bird 8085 . . . assures uniform coverage of large fairway areas up to 232 ft. in diameter.

Turf Bird R-7075 . . . portable greens model pin-points coverage up to 152 ft. in diameter.

Quail Hollow, new course at Charlotte, N. C., designed by George Cobb . . . Allen Seacrist, son of Jay, who was killed working on Hagerstown, Md., municipal course where he was supt.-mgr., named course supt. . . Mrs. Dorothy Seacrist, Jay's widow, appointed by Hagerstown Park Board to manage clubhouse.

Cherry Hill CC, Denver, adding Par 3 designed by Pres. Maxwell . . . Tuscon, Ariz., Randolph municipal course now has a charge of \$3 a round for privately owned golf cars . . . That is half what the city charges for rent of its own cars.

A great deal of publicity, nationwide, received by Chet Jawor and his associates on Detroit municipal course staff through Associated Press story on the program of kid instruction in shot making technique and golf manners at the city's six public courses . . . Ed Young and Jack Lunn finish their 9-hole private membership Oakdale GC at Florence, S. C. . . Roland Robertson, pro at Darlington (S. C.) CC designed the course . . . Building sites adjoin the course.

U. S. Rubber Co. gives property making possible construction of Fairfield CC, Winnsboro, S. C. . . Company also gave the newly-organized club Fairfield Inn which will be rehabilitated and used as clubhouse . . . Course designed by Robert A. Renaud, Pickens, S. C. . . Construction supt. is G. Holley Shirely who will stay on as pro . . . Par 3 Forest Heights GC 9 lighted for night play being built for Herman A. Strong in Jamestown, N. Y. . . Al Schardt, supt., Wanakah CC, Buffalo, is designer . . . John Morris will be supt.

Sun City No. 2, Del E. Webb Corp., project near Phoenix, to have 18 . . . Crossroads, Inc., Dick Willard, pres., to build Par 3 18 as feature of 105 acre residential development in Bellevue section of Seattle, Wash.

Paradise Valley CC 9 near Charlotte, N. C., to open soon . . . Lakehurst CC, Charlotte, N. C., adding second 9 . . . Chartwell G&CC, near Baltimore, opens . . . It is a feature of a real estate project of . Albert Merritt . . . Steve Tobash is pro . . . Montrose (Colo.) CC 9 opens . . . Joe Francese is pro.

Expect to have Fullerton (Calif.) municipal course open in Sept. . . Ronald E. Roth is supt. . . There will be a Par 3 course adjoining the conventional course . . . C. B. Hollingsworth of Los Angeles heads group planning to begin building soon full length 18 and Par 3 for city of San Bernardino, Calif. . . George Page, Wakefield, Mass., opening new course at Colonial CC (Boston dist.) which he has owned for 15 years . . . Page says watering system of new course is the most advanced in New England . . . He has made an arrangement to provide guest cards to guests of several Boston hotels.

Open 18 at Kensington Metropolitan park near Milford, Mich. . . Huron-Clinton Metropolitan Authority built and operates the course . . . David O. Laidlaw, Milford, Mich. is park supt., and Richard Yeager, Milford, is in charge of course . . . Expect to open Craighills CC, Jones-



Got your copy of **Ford work tips?**

Get the booklet *Ford Tractors and Equipment for Grounds Maintenance* from your Ford Tractor and Equipment dealer, or write Industrial Sales Department, Ford Motor Company, 2500 E. Maple Road, Birmingham, Michigan. You'll find money-saving information when your job problems involve . . .

POWER—Utility, All-Purpose and Industrial Ford and Fordson tractors, gasoline or diesel.



DIGGING—Ford 10 ft., 12 ft. and 14 ft. backhoes; Sherman 10 ft. and 12 ft. backhoes.



MOWING—Choice of cutterbar mowers, 60" rotary cutters, 100" rotary cutters.

LOADING—Full line of hydraulic loaders with 1000 to 2500 lbs. rated capacity.



MAINTENANCE—Blades, dozers, dozens of other attachments add to Ford versatility. You see more Fords because they save more money!



GREATER VERSATILITY — THAT MEANS BIGGER PROFIT FOR YOU!

NEW IDEAL MODEL 900 SHARPENER

Grinds Largest To Smallest Reel-Type Lawnmowers

NEW IDEAL MODEL 900 sharpens everything from the smallest edger to the largest fairway or power unit. Heavy-duty machine precision grinds either by "straight-line" or "hook" methods to give you extra versatility, bigger volume.

OUTSTANDING FEATURES INCLUDE: ½ h.p. motor, gravity-type feed, 6-inch grinding wheel, simple screw-type adjustments. With reconditioner, tool tray and bed-knife grinding bar.

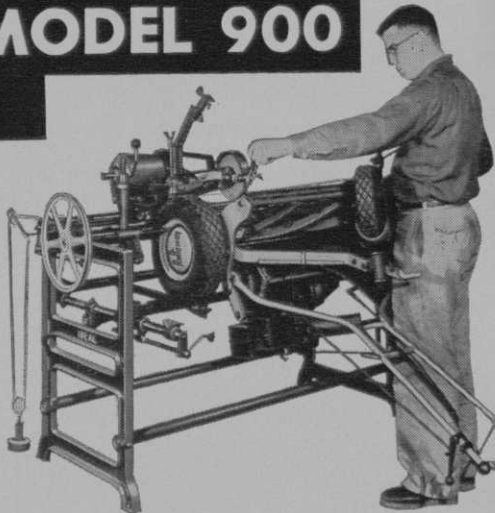
TWO-WAY GRINDING OPTION

Get Full Details Today On New Model 900 Sharpener

THE FATE-ROOT-HEATH COMPANY

Dept. G-7

PLYMOUTH, OHIO



boro, Ark., soon . . . Open first 9 of Kern Valley G&CC, Kernville, Calif. . . . Jack Ewing is pres. and Earl Coulter, pro.

CC of Orlando, Fla., opens its new 18 built to design of Robert Trent Jones . . . Club's first course was built about 1913 . . . Frank Hubbard is club pres., Wm. Ballentine is supt., Jimmy Brass is pro and Clark Upp is mgr. . . . Charles Willimon opening his Bonnie Brae GC first 9 at Greenville, S. C. . . . Sam Ashton is supt. . . . Open Quail Hollow CC 18 at Charlotte, N. C. . . . Pike Brook CC 18 near Somerville, N. J., opened . . . Ralph Westervelt is pres.

Winnisuket CC, Woonsocket, R. I., building second 9 to plans of Geoffrey Cornish . . . Glen Oak CC, Scranton, Pa., opens second 9 . . . Start building Lake City (S. C.) 9 to design of Eddie Riccoboni, Sumter, S. C. . . . Cecil Floyd is Lake City CC pres. . . . Open first 9 of Miami View GC, near Miamitown, O. (Cincinnati dist.) . . . Keith Pickett is supt.

Open Sea Pines 18 on Hilton Head Island off Charleston, S. C. . . . Expect to open second 9 of North Kern course, Bakersfield, Calif., this fall . . . Kermit Stieber is supt. and Jim Haggerty is pro at North Kern, county-owned course . . . Lockport (Ill.) Galf & Recreation Club takes over Texaco course . . . J. S. Wilson is pres.

Hillsboro (O.) Elks Lodge begins building course . . . Eddie Patterson and his sister Kitty open their 9-hole Golf Acres course near Fairfield, Me. . . . Pursley's GC, 6 miles north of

Palmetto, Fla., playing 5 of its first 9 . . . Ray LaCombe is pro . . . Fort Walton Beach, Fla., pushing construction of its municipal course.

Miami, Fla., opens first 9 of its Le Jeune Rd. course . . . Paul Turcotte is supt. . . . Woody Laughinghouse, Mgr. . . . Vince Allen, pro . . . First 9 of Island's End G&CC between Greenport and East Marion, N. Y., opened . . . Putnam Recreation Assn. building 9 near Eatonton, Ga.

Cedarbrook CC building its new course in Philadelphia's suburban Blue Bell, Pa. and expects to move from its present site to the new course and clubhouse June 1, 1962 . . . Present course has been sold as apartment-shopping center site and will have 9 holes operating . . . Wm. F. Mitchell is architect of new course . . . Luther Scott is Cedarbrook supt. . . . Start building 18 for Clifton Springs (N. Y.) CC to replace club's present 9 . . . Al DePorter is Clifton Springs supt. . . . Peter Craig, Fairport, N. Y., designed new Clifton Springs course.

Waccabuc (N. Y.) CC rebuilding course to plans of Alfred H. Tull . . . First 9 of Waccabuc was built about 1912 . . . Columbia G&CC, Hudson, N. Y., to build second 9 to plans of Hal Purdy . . . Mt. Lebanon (Pittsburgh suburb) township commissioners OK second 9 of municipal course to plan of James Harrison and construction of clubhouse . . . Expect to have first 9 of Lake Arrowhead (Calif.) course in play this fall . . . Lake Arrowhead Development Co. plans 307 home sites adjoining the course.

GOOD GREENS AND TEES ALL SEASON

Experts all over the country are finding green and tee trouble stem from hard packing.

Bent roots must have oxygen and they can't get it thru a hard, fine packed top layer.

The answer is the use of a uniform coarse sand that is clean and free from hard packing fines. Spike tooth the green, clean, apply uniform coarse sand and drag.

We'll ship anywhere — bagged or bulk

NORTHERN GRAVEL COMPANY

407 East Front St.

Muscatine, Iowa

Smoky Hill CC, Hays, Ks., being built . . . Open Arbuckle (Calif.) GC . . . Stanley Antran, pres. . . Lou Elkins, pro . . . Rex Donaldson, Carterville, Ill., plans to build Egyptian CC at Marion, Ill. . . Glenhaven G&CC, near Milpitas, Calif., expects to have first 9 in play in Nov. . . . Jack Fleming, San Francisco, is architect.

Volunteer labor building much of Pendleton, Ore., 9-hole Par 3 municipal course . . . Angus Albertson, Albany, Ga., subdivider, planning Blue Hole CC 18 as part of 1,000 acre subdivision . . . Aldino Vannini plans to build 18 at Stoekton, Calif.

Open Emeis, Davenport (Ia.) third municipal course . . . Bob Fry is pro . . . Robert Bruce Harris designs 18 for Boulder (Colo.) CC . . . Donelson Park Club to build course at Donelson, Tenn. . . . Hialeah, Fla., City Council OKs issuance of \$6,400,000 certificates of indebtedness to build 27 holes and 2 clubhouses on 200 acres which Hialeah will buy from Recreation Development Associates . . . Hialeah then will lease the club to operators for rent that will pay off certificates of indebtedness in 30 years . . . Expect to start construction this fall.

Jerry Clymer heads group campaigning to get golf course at Rio Vista, Calif. . . . Aztec (N. M.) City Commission considering plans for 9 in proposed park . . . Wm. P. Bell, Pasadena, architect of two courses that San Leandro (Calif.) Shoreline and Golf Advisory Commission recommends to city council be built along

city's shoreline.

Carson Wagstaff heads group building Fuquay-Varina CC 9 at Fuquay Springs, N. C. . . . Open Pike Brook, Somerset County (N. J.) Park Commission 18, near Somerville, N. J. . . . Rudy Sexton is pro . . . C. D. Wagstaff & Co., Glenview, Ill., designed and is building 18 for Civic Improvement Trust Fund at Ft. Madison, Ia.

Richard Hallowell heads group organizing country club at Federalsburg, Md. . . . Beaver Valley CC, Beaver, Pa. is "retiring," due to course changes, its first green which is believed to be the oldest in western Pennsylvania . . . It has been played since 1902 . . . Another great old green is the 5th at Glen View (Ill.) Club which used to be the 5th at the first Edgewater GC course, Broadway and Devon, Chicago . . . When Edgewater moved to its new location about 1912 K. L. Ames, father of USGA former pres., John D. Ames, bought the green and had it moved as a gift to Glen View . . . It is a beautiful putting surface.

Leon Howard, State College, Tex., visits San Angelo, Tex., at request of San Angelo Municipal Golf Organization to recommend site for new municipal course . . . Three Japanese-American groups considering building golf clubs in Los Angeles area . . . Bellaire CC has leased Osage Hills CC clubhouse and course at Sand Springs, Okla. and is engaged in improvement program . . . Joseph H. Schulte is mgr. . . . Dick McConkey is pro.

Stardust GC, Las Vegas' newest 18-hole course,

will open Oct. 1, according to Howard Capps, golf dir. at Desert Inn CC and named to the Stardust post . . . Fairways will be of Bermuda . . . Summer greens will be in Bermuda and converted to rye and Rainser red fescue in other months . . . This will bring number of 18-hole courses to six in southern Nevada . . . Ronnie Polane is new assistant pro at Homestead GC in Hot Springs, Va. . . . He's assisting Nelson Long . . . Marty Raab named head pro at 18-hole course and driving range at Crossroads community center near Lake Hills in Seattle . . . He has been an assistant to John Hoetmer at Sand Point in Seattle for two years and learned his golf under his father who was a pro in Germany.

Article in N. Y. Herald Tribune tells how residential properties are closing in on Forest Hills, Bloomfield, N. J. . . . In early days the club had to build its second 9 on other side of the railroad tracks . . . Emery Thomas has been pro at the club since 1942 . . . May revenue at Palm Springs (Calif.) GC, a muny course, was \$3,700 higher in 1961 than 1960, and for the first five-month period the fee income was up \$16,000 . . . Northeastern Amateur, sponsored by N. E. Wis. GA, to be played at South Hills in Fond du Lac, July 17-21 . . . There are three divisions: Regular, Senior and Junior . . . One thing that makes the Eastern Amateur, which is being played for the fifth time at Elizabeth Manor G&CC, Portsmouth, Va., Aug. 2-6, so attractive is the numerous social functions ar-

Raynor Is Dorado Sports Head

Harvey F. Raynor, former PGA tournament dir., has been named dir. of sports for the Dorado Beach Hotel & GC, San Juan, Puerto Rico. He will supervise all sports activity at the 1,500 acre resort estate. Raynor resigned his PGA position in May. The golf staff at Dorado includes Rusty Gilbert, resident pro, Art Jones, staff pro, and Chichi Rodriguez, who represents the resort on the tour. Raynor was with the tournament bureau for nine years and before that served as professional at Modesto (Calif.) GC. He attended the University of Oregon.

ranged for participants and their wives . . . Deane Beman is the defending champion . . . Tom Strange, 1957 winner, is now a teaching pro at The Greenbrier in White Sulphur Springs, W. Va.

A 6,000 sq. ft. pool going in at Mutton Town G&CC, Oyster Bay, L.I. . . . Montgomery County (Md.) dedicated its Falls Road 18-hole public course on June 10 . . . It's located between Rockville and Potomac and cost around \$400,-

\$AVE

10% to 25% on your golf course supplies

WE SHIP DIRECT

A complete line of —

LIQUID FERTILIZERS

FUNGICIDES

INSECTICIDES

HERBICIDES

WETTING AGENTS

Suppliers to the golf course trade since 1939.

Write for Catalogue

American Liquid Fertilizer Co., Inc. • Rokeby Chemical Co.
Marietta, Ohio • P.O. Box 267 • Phone: FR 3-1394



**ATTENTION
ALL GOLFERS!**
*The Championship King's
and Queen's Courses of*
**GLENEAGLES
HOTEL**
Perthshire
offer all that is finest in Scottish Golf.

The hotel's other unique sporting and recreational facilities include a miniature golf course, tennis and squash courts, an indoor swimming pool, a private cinema, and a shopping centre. Dancing.

**OPEN EASTER
TO THE END OF OCTOBER**

Gleneagles Hotel is only 70 minutes by road from the international airport at Prestwick.

Full details may be obtained from the Resident Manager, Gleneagles Hotel, Perthshire, Scotland, or from British & Irish Railways Inc.:

New York: 630 Fifth Avenue. Los Angeles: 510 West Sixth Street. Chicago: 39 South La Salle Street. Toronto: 4 King Street (West)

BTH/492A

000 . . . Otis AFB in Mass. building 9-hole course . . . Quail Hollow CC, 18-hole private course near Charlotte, N. C., opened on June 3 . . . 7,100 yard layout was designed by George Cobb . . . Paradise Valley, also in Charlotte area, to have full length 9 and lighted Par 3 . . . It will be ready in Sept. . . . Pine Lake CC, in same locality, plans to start building first 9 of proposed 18 in near future.

Pinehurst expects to have its fifth 18-hole course completed by this fall . . . Whispering Pines, 18-holes, near Pinehurst, also to be ready in Oct. . . . Elkin (N. C.) CC has first 9 of 18 under construction . . . Dunn (N. C.) CC has second 9 in building stage . . . Oak Island Club, near Southport, N. C., now being built . . . Its 18 holes were blueprinted by George Cobb . . . Another course in planning stage in Southport area is Boiling Springs Lake, which will be tied in with a real estate project . . . Wildwood GC in Raleigh has second 9 under construction . . . Gene Hamm, who also has a course going at Fuquay Springs, drew the design . . . Five Par 3s opened or nearing completion in North Carolina in recent months.

Geoffrey Cornish was the architect on several 18-hole courses completed recently in New England . . . They include Pautipaug CC in Norwich, Conn., Spring Valley in Sharon, Mass., Alpine CC in Cranston, R. I. and Nashawtic CC in Concord-Sudbury, Mass. area . . . Crystal Spring GC in Haverhill, another Cornish opus, is nearing completion of its first 9 with another one to go . . . Four other Cornish designed courses

are in the building stage in New England . . . Wonder who helps him carry the money to the bank? . . . Mt. Vernon (Va.) CC opened its 9-hole course early in June and Sam Snead came along a few days later to put on an exhibition.

Hope Meadow CC, new planned 18-hole course for Simsbury, Conn. area, begins membership drive . . . Transferable family memberships available at \$1,000 and non-golfing family memberships at half that figure . . . Existing farm buildings at Riverview CC, Milford, Conn., being converted to clubhouse . . . 18-hole course there now being constructed . . . C. B. Boccard planning to build 18-hole Prospect (Conn.) CC, starting this fall . . . Al Zikorus of Bethany designed the course and is going to build it . . . Another course that should be under construction in Sept. is Orchard Hill CC, Middlefield, Conn. . . . It's being financed through \$1,500 memberships that will be limited to 300 golfing families . . . Blue Rock Par 3, an elaborate 18-hole layout tied in with real estate project, in planning stage in South Yarmouth, Mass. . . . It will extend to 2,800 yds.

John R. Henry, supt. at Brook Hollow GC, Dallas, Tex., who has been so busy in recent months that he is just now catching up with reading past issues of *Golfdom*, takes exception to the interpretation of his speech (read by Fred Grau) at the international GCSCA convention, held in Toronto, Jan. 29-Feb. 3 . . . In it, *Golfdom* reported that John referred to "temperamental members" and that supts., being so far

from the center of activity at most clubs, "develop a kind of stepson complex." . . . A close perusal of Henry's speech reveals that he said "members become belligerent toward us and the project we are undertaking (such as aerating) if we don't inform them of what we are going to do." . . . Reference to the stepson complex was drawn from this passage: "I have heard some supts. say, 'I'm not going to be one of those clubhouse supts. and hob-nob with that bunch. I don't even know half of them'." . . . No attempt was made at the convention to take a word by word account of any speech, and it must be conceded that Golfdom's articles, covering the convention, were written from notes in which some of the interpretations of what was said were a little too general . . . At any rate, we apologize to John.

Robin Dale CC, 9-hole course north of Waldorf, Md., opened . . . R. Cliff McKimmie is pro . . . Sandale G&CC, Pomona, N. J., formerly was Apex CC which was bought as nucleus of Sandale club and resort subdivision of vacation and retirement homes on racially integrated basis . . . Donbar Development Corp., Westbury, L. I., N. Y., Michael Teicholz, pres., which has built several hundred homes on Long Island for Negroes, is building the Sandale project.

Palisades Interstate Park Commission planning 18 for Bear Mountain-Harriman state park . . . Freeport, Tex., now owner of Freeport GC . . . Dow Chemical Co. gave city its half of the investment in the course and club-

house and city paid \$75,000 for Freeport Sulphur Co. half . . . Fees now are paid . . . Course formerly was played free . . .

Merrywood CC, Smithtown, N. Y., names its par 3 course the Sarazen course in honor of Gene who is club's consultant . . . Gene urged that the club add a Par 3 to its conventional 18.

Supts. publicity is getting bigger and smarter . . . One of many bright examples is Brownsville (Pa.) Telegraph story on Wilford J. Isiminger, supt., Green Course CC, Waynesburg, Pa., and his asst. Fred Tharp "representing the club at the May meeting of the Allegheny GCSA, at the Alcoma CC." . . . The newspaper item told of the soil demonstration by Dr. James E. Eakin of Penn State and other program subjects at the meeting attended by 60 members and guests of "30 leading clubs in western Pennsylvania and northern West Va." . . . This ties together publicity for the clubs and supts. . . . Supts. should ask local newspapermen how to get this sort of publicity which newspapers want to get because it interests the public.

Construction begins on Rolling Hills CC 18 at Wilton, Conn. . . . C. B. Carlson & Sons, New Fairfield, Conn., are contractors . . . Al H. Tull is architect . . . Maryland-National Capital Park and Planning Commission buys 9-hole course at Hillcrest Heights, Md. for \$175,000 . . . The commission already operates a 9-hole course in Montgomery County, Md.

At Burley, Ia., women's play on the municipal

Give your golfers every scoring advantage...

RECOMMEND SWEET SHOTS!

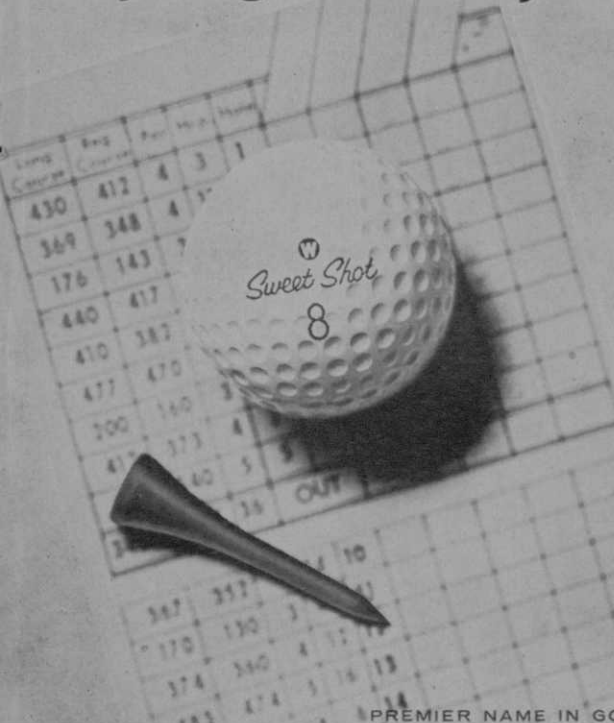
You want to help your golfers lower their scores. We concentrate on helping you do it — by specializing (for 57 years) in building better golf balls. Nothing else.

Without resorting to wild claims, trick names or costly testimonials, we'll simply make you this promise about today's new Sweet Shot: *no championship golf ball has been built yet that gives you more distance, truer flight and roll, and more durability.* (Sweet Shot's new cover with polyurethane finish is virtually indestructible, always stays sparkling white.)

Give your golfers every scoring advantage. Recommend Sweet Shots. Sold exclusively through Golf Professionals.

Worthington
GOLF INC. ELYRIA, OHIO

PREMIER NAME IN GOLF BALL DEVELOPMENTS SINCE 1904



Cyclone

SPREADERS
AND SEEDERS

FOR GOLF COURSES



CYCLONE MODEL S-3 POWER SEEDER does a fast, accurate job of top dressing granular plant food, sowing grass seed or distributing granular herbicides and insecticides. Heavy duty, flexible drive shaft fits standard power take-offs. Double agitator, easy setting rate gauge and positive shut-off. Spreads up to a 30-foot swath.



ELECTRIC MODEL M-3 can be mounted on front or rear of tractor, truck or jeep; also boats, for spreading water weed control materials. Similar to Model S-3, except powered by a self-contained electric motor.



CYCLONE MODEL 20 HAND SPREADER. For fast, precision spreading of pelleted and granular fertilizers and chemicals; also seed. Spreads a 6- to 8-foot swath. Feathered edge prevents streaks. Capacity 3 gals. or approx. 20 lbs. Shield protects operator.



FAMOUS CYCLONE HAND SEED SOWER. Accurately and quickly distributes all smooth grass seed and grain; also pelleted and granular fertilizer. Exclusive double-oscillating feed. Instant shut-off. Spreads a 7- to 28-foot swath. Feathered edge prevents streaking.

CYCLONE LAWN SPREADER. Famous for speed, freedom from streaks, accuracy. Covers a 6- to 8-foot swath. Ideal for fast, accurate spreading of pelleted and granular fertilizer, herbicides, insecticides, seed, lime, ice melters, etc.

See Your
Distributor
or Write for
Information



THE CYCLONE SEEDER CO., INC.
Urbana 60, Indiana

course has increased 500 per cent in past few years . . . Now about 75 men and 70 women play regularly at the course . . . Course is being enlarged from 9 to 18 . . . Pros and supts. all over the country are commenting on women not being scared away from bad weather play as easily as men are . . . Waterproof golf shoes and rainy weather golf attire now has the girls looking pretty, fresh and cheerful instead of like wet cats.

Highly pleasing increase in sale of women's clubs who were losing lot of business to cut-price stores has been the result of the pros putting more accent on open lines of women's clubs . . . It's delicate — maybe dangerous — to let a woman know she can buy 5 or 6 top quality and properly-fitted irons, and 2 or 3 woods to match, at the pro shop when a 14-club set is the customary first class deal, but in some cases it is the only way that the pro can protect his business and serve his customer.

Flock of new Par 3s opened . . . Among them Black Cayon 9 at Phoenix . . . Lower Huron Metropolitan Park 18, Belleville, Mich. . . .

Amputee Tourney in Spokane

The 13th annual National Amputee Golf Assn. tournament will be played Aug. 10-12 at Manito CC in Spokane, Wash. The Manito course measures 6,400 yds. and par is 36-36-72. The 1944 PGA Championship and 1942 Western Amateur were played here. There are nine courses in the vicinity of Spokane which has a population of 180,000. The city operates three muny courses.

Fillmore, Calif., 9 holes . . . Twin Lakes 9 at North Bradford, Conn. . . . Kalu 9, north of Canfield, O. . . . Highland Links CC opened by owner Jimmy Sadler near Norfolk, Va.; this course is Morris "Speed Links" design.

Par 3s planned or being built at Highland Park, Minn. (St. Paul suburb) . . . El Rio, Cal., (18) . . . California City, Calif. (18 lighted) . . . Bensenville, Ill. . . . South Yarmouth, Mass. . . . At Roney Plaza hotel, Miami Beach, Fla. . . . Eugene, Ore. (9) . . . Seattle, Wash. (18) . . . Bridgehampton, N. Y. (9) . . . Mendota Heights, Minn. (St. Paul suburb) 9 holes for Harold Liefshultz of St. Paul . . . Newport Harbor, Calif. (9) . . . Johnstown, N. Y. (9) . . . Idaho Falls, Ida. . . . Corpus Christi, Tex. (9) . . . Pendleton, Ore. (9).

Wayne CC, Inc. to build 18 semi-private at Wayne, Mich. to plans of Bruce Matthews . . . Cortez (Colo.) GC building 9 . . . Fort Sill, Okla., to have additional 9 . . . Charleston (S. C.) Air Force Base building 9 . . . Winged Pheasant GC 9 being built at Farmington, N. Y., by Rocco Furfare, Pumpkin Hook range owner, and James Commisso, pro at Canandaigua (N.

(Continued on page 98)

CONTENTS

<i>Swinging Around Golf</i>	3
<i>Nothing Patented in Analyzing Swing</i>	21
<i>Suggested Rules for Golf Car Use</i>	24
<i>Staking Out the Test Plot</i>	O. J. Noer 26
<i>Behind-Scenes Maneuvering Causes Trouble</i>	Joseph W. Dragonetti 28
<i>Make Them Think of You</i>	32
<i>Wilt Is Coming Back</i>	William Smart 35
<i>TAVS Solves Car Transport Problem</i>	38
<i>Golf Boom in Philippines</i>	Bill Sherman 40
<i>Grau's Answers</i>	Fred V. Grau 42
<i>Zoning Amendment Case</i>	William Jabine 54
<i>Manufacturing News</i>	83

All advertising and editorial correspondence, change of address notices, subscription orders, etc., should be sent to GOLFDOM, 407 S. DEARBORN ST., CHICAGO 5, ILL.

Swinging Around Golf

(Continued from page 74)

Y.) CC . . . Peter Craig is architect . . . Course expected to open next month.

Inverness (Fla.) G&CC opens first 9 . . . Heather Hills CC to build 18 at Indianapolis to design of Peter Dye at community being developed by Perine Development Corp. . . . Begin building 9 for Gonzales (La.) GC . . . First 9 of New Orleans City Park's No. 3 course opened . . . Bob McIntyre supt. new Arrowhead CC, Chillicothe, Ill.

William A. Perry, chmn of Greater Lauderdale (Fla.) C of C, who has been canvassing airline and travel personnel in the North in order to drum up business for his city during the summer months, uses golf as an important wedge in making his sales pitch . . . He finds that many of the travel bureau people are amazed to find that the Ft. Lauderdale region has so many fine golf courses in operation . . . Charles S. Brearly, 83, first pres. of the Venice

GC, died in Lake Wales, Fla., in June . . . He was one of the founders of the Venice club.

According to the CMAA, the new federal minimum wage law is not applicable, generally speaking, to private clubs . . . But the Club Managers' organization hastens to add that this is a federal law and some clubs may be bound by minimum wage laws in their state . . . According to officials of Olympia Fields (Ill.) CC, site of the 1961 PGA Championship (June 27-30), there are about 250 motel rooms available within 15 or 20 minutes of the course . . . The Pick Congress Hotel on Michigan ave., however, will be tournament headquarters.

Charles E. Maddox of Batavia, Ill., and New Orleans, La., is handling construction of the 18-hole course for Isle Dauphine Club, Mobile, Ala. . . . Los Angeles Chinese community planning 18-hole course in suburban Puente . . . Total cost of course and club will be around \$1½ million . . . Eastern Open officials planning to raise funds for Ed Oliver at their tournament at Elizabeth Manor, G&CC, Portsmouth, Va., Aug. 3-6.