



Phone:  
HEmlock 4-1000

**TRANS-AMERICAN VAN SERVICE, INC.**

**TRANSPORT YOUR  
GOLF CARS  
UNCRATED**

VIA  
**TRANS-AMERICAN  
VAN SERVICE**

Authorized National Carrier. Door to door from anywhere to anywhere. You'll like the ease of operation. No crating — no banging. Roll off cars, spike and span, at destination. You'll benefit greatly from our skilled and specialized experience in this field.

7540 S. WESTERN AVE.,  
CHICAGO 20, ILLINOIS.

### **Agriform Turf Reconnaissance**

Pacific Agro Co., Seattle, Wash., has introduced a new wrinkle, inspection of turf from helicopter. Lee Fryer recently took officials of the Seattle baseball club aloft to check the grass that had been fed for the last two years with Hercules Nitroform. It proved to be such a practical and effective way of looking over the turf that it is going to be carried out at golf courses, stadiums and other localities with large plantings.



### **Roseman Appoints Midwest Rep**

Roseman Mower Corp., Evanston, Ill., has appointed Robert E. Walling its Midwest factory representative. A native of Cleveland and an Ohio University graduate, Walling has been associated with the Ohio Toro Co. for the last 10 years. He has been added to the Roseman staff to help handle the greatly increased sale of the hollow-roller mower.



### **Spalding in "American Made" Drive**

A. G. Spalding & Bros. has launched a "Keep Americans Working — Keep Americans Playing" drive, aimed at making the consumer completely conscious of American made sporting goods. Edwin L. Parker, pres. of the company, says that enough people aren't aware of the fact that foreign made sporting goods are reducing job opportunities for Americans and that some firms have had to cut back in employment because of this. Parker adds that war crop of babies is now coming into the labor market and "we need more jobs — not less."

Recently distributed was the new 80-page catalog of Bob Dunning-Jones, Inc., 1402-12 S. Lewis, Tulsa, Okla. It contains photos, descriptions and prices of just about all products that are used in turf maintenance.

### **Trojan One of First to Build Golf Car Batteries**

Trojan Battery Co., 724 E. 61st st., Los Angeles 1, supplied batteries to Autoette Co. of Long Beach when that firm started to build golf cars and thus was one of the first battery manufacturers to supply power units for golf vehicles. From this early beginning, Trojan learned the principles of building batteries that give more rounds per unit. Today, Trojan supplies several golf car manufacturers with batteries as original equipment. To simplify and speed up servicing of its batteries, Trojan became the first company to equip them with vent caps that are removed with only one-quarter turn.

**BUYERS' SERVICE • P. 103**

## **CREEPING BENT STOLONS**

Arlington C-1

Congressional C-19

Old Orchard C-52

## **Old Orchard Turf Nurseries**

P.O. Box 350 — Tel. Al 6-6395 — R. R. Bond, Prop. — Madison 1, Wisconsin  
Branch Nurseries in Farmington, Iowa — Camarillo, Calif.

Why wait a year for seeded bent greens to mature? Plant Old Orchard stolons, playable in six to eight weeks.

**THE GREENS ARE THE FOUNDATION OF ALL SUCCESSFUL GOLF COURSES**

# SAVE CLUB HOUSE FLOORS

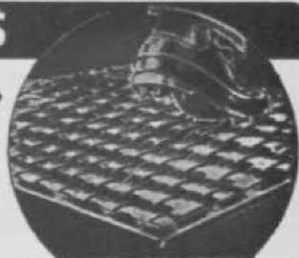
## WITH SPIKE-RESISTANT PNEU-MAT RUNNERS

Protect your floors from spike holes with rugged Pneu-Mat Runners. Absolutely spike-resistant, they provide a comfortable walking surface—improve the appearance of your club house.

Woven of rubber-impregnated fabric, Pneu-Mat Runners are tougher than rubber runners. Reversible for double wear.

Money Back Trial Offer: Order a trial section. Test it on an area which gets especially hard wear. Money back if not satisfied.

DDD ▶



### STANDARD WIDTHS

20" - 24" - 30"  
36" - 42" - 48"

### Trial Section

24" x 60"

\$12.50 postpaid

Write today for illustrated folder

**SUPERIOR RUBBER MFG. CO., INC.** • 145 Woodland Ave., Westwood, N. J.

## Louisville Metal Has Handy Portable Concession Booth

Louisville Metal Products Co., 1101 W. Oak st., Louisville, has developed a low-cost, portable concession booth that can be erected or



dismantled by two men in five minutes without the use of tools. The booths are practical for indoor or outdoor events and can be used for trophy displays, etc. Called the Universal Concession booth, the Louisville product has an all-metal frame and nuts or bolts aren't used in

its construction. All parts are interchangeable, allowing the booth to be converted into six different sizes.

## Worthington Has Pastel Golf Balls for Women

Worthington Golf, Inc., Elyria, O., is producing and marketing Lady Diana pastel colored golf balls. They are designed to match attire and come packaged in threesomes of pink, blue and yellow. The Lady Diana is constructed with extra-lively center and is wound to a slightly lower compression level for greater distance. An extra durable cover is said to insure long life.

## Equipco Handles Westcoaster

Equipco Inc., 25550 Grand ave., Detroit, has been named dealer in Detroit and Eastern, Mich. for the Westcoaster line of golf and industrial cars that are nationally distributed by Borg-Warner Corp., Ingersoll Kalamazoo div. Equipco will handle both sales and service.

Edward D. Lassone, Schwenksville, Pa., has been named service engineer for Keasbey & Mattison Co., Ambler, Pa., asbestos pipe div. He will provide technical assistance for sales personnel and supervise educational programs pertaining to asbestos-cement pipe installations.



## A Proven Golf Ball Washer for...

### The **HENRY GOLF BALL WASHER**

Used On Leading Golf Courses Throughout The World

You get more ball washer for the money with The Henry. It costs less initially. Course Supts. will find it requires minimum upkeep. Golfers throughout the world have found that The Henry, with its rubber squeegee and gasket, cleans their balls faster and more efficiently.

DEALERS IN ALL PRINCIPAL CITIES

only  
**\$14.75**

Prices F.O.B.  
Waukesha, Wis.

**A. C. Schendel,**  
Distributor  
Rt. 5 Box 92,  
Waukesha, Wis.

P  
R  
O  
-  
G  
R  
I  
P



"Greatest  
of  
Them All"

is prepared especially for the leather grips of Golf Clubs. It gives a firm, tacky grip with light hand pressure, permitting an easy relaxing rhythmic swing. Your Accuracy will improve, you'll feel relaxed — and those "Extra Strokes" will vanish.

**Manufacturers' Specialty Co. Inc.**

2736 Sidney Street • St. Louis 4, Missouri



You'll Live in This  
Cool, Crisp, Correct

## CRUISILK BLAZER

Tailoring of quality and distinction is found in this CRUISILK BLAZER. In the following shades — WHITE — BLACK — NAVY — STRAW (Gold) — CORK BARK (Tan) — PUTTY (Beige) — RED. Price \$34.95

Madras type Plaids and Checks (50% Dacron, 50% Cotton) and (100% Combed Cotton) — \$37.95  
Contrasting Slax — from \$14.95

Sold Thru Pro Shops Only

**E. JAMES KUNIK**

41 South New York Ave., Atlantic City, N. J.

PRICE MAY BE OVERLOOKED—QUALITY NEVER

## Wood's Model 62 Designed for Quick Mowing of Large Areas

Wood Brothers Mfg. Co., Oregon, Ill., is producing a new Model 62 that is equipped with twin blades that cut a full 5-ft. swath.



Designed for high speed in mowing large areas, the right side of the Model 62 extends beyond the wheel, giving fine visibility for checking what has been done. The mower has a dual V-belt drive with a C-belt attached to each blade for extra power. Access holes in the deck plate make it possible to change blades in five minutes without getting under the mower.

## Cuts Club-Cleaning Time

ABC Golf Sales, 260 Denver Club Bldg., Denver 2, Colo., says that the one operation job done by ABC cleaner-polisher in removing ball paint and other unsightly material from club-heads and giving them a high polish is making the product standard at many first class pro shops. Attractive appearance of woods after the ABC treatment not only saves time but produces results that have golfers commenting favorably on service they get for their cleaning and storage charge. ABC Sales has a trial offer for pros.

Three new color illustrations have been added to the famed MacGregor gallery. Latest to be portrayed are Barbara Romack, Don Whitt and Tom Niepore. This brings to 19 the number of professionals in the MacGregor packet.

**NEW** Monroe FOLD-KING



NO. K-3 TABLE  
TEMPERED GLASS TOP  
PLASTICIZED TOP

Monroe  
Fold-King  
DIRECT PRICES  
DISCOUNTS & TERMS

### FOLDING TABLE LINE

Kitchen committees, social groups, attention! Factory prices & discounts up to 40% to Churches, Schools, Clubs, etc. Monroe all-new FOLD-KING Banquet Tables, with exclusive new automatic folding and locking, super strength, easy seating. 68 models and sizes.

### BIG NEW 1960 CATALOG FREE

Color pictures. Full line tables, chairs, table and chair trucks, platform-risers, portable partitions, bulletin boards. Our 52nd year. THE MONROE CO., 12 Church St., Colfax, Iowa

## RYANS O.K. No. 4 SEEDER & SPREADER

4 Cu. Ft.(300 lbs) Capacity-3 Ft. Spread



No Holes to Clog.  
Quick Shut-off Lever &  
Adjustable Gauge.  
Screw On Handle  
Spreads Top Dressing,  
Nitro-Humus, Peat,  
Commercial Manure  
& Other Materials  
Successfully  
Weighs Only 69 Lbs.  
Write Dept. "G"

DEALERS WRITE FOR OPEN TERRITORIES  
H. & R. MFG. CO., Los Angeles 34, Calif.

## SPECIALIZED GOLF COURSE SPRAYERS

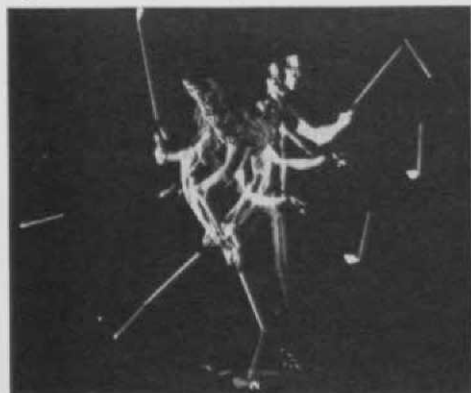


To keep your Fairways, Greens and shrubs in perfect condition you need a **HARDIE SPRAYER** for applying insecticides, weed control, fertilizers, herbicides, spraying greens, shrubs, etc. Most models available in wood or steel tanks. Call your dealer, or write for catalog today.

THE HARDIE MANUFACTURING CO.  
730 So. Main Street  
Wilkes-Barre, Pennsylvania

### Practice Club with Hinge

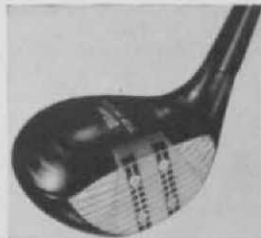
Clubs made by Private Pro, 1029 Fisher Bldg., Detroit 2, are said to be scientifically designed teaching aids that feel and hit like regu-



lation clubs when swung correctly. They have a special stainless steel hinge, made by Allegheny Ludlum Steel Corp., about 10 1/4 ins. up the shaft that "breaks" when the clubs are not swung correctly. Shaft doesn't break when clubs are swung properly. The clubs are made for left and righthanders and 5-irons and drivers are available.

### Wilson Top Notch Woods

The 1960 Wilson Top Notch wood is said to feature the Strata-Bloc principle which eliminates swelling and splitting of the head. It has the exclusive Staff-Pro shaft in a variety of flexes. Extra large fiber face insert is said to accent the club's appeal. The Top Notch has top grade, genuine calfskin leather grip in a choice of three styles. The Wilson woods are available in matched and registered sets and are sold through pro shops only.



### May Solve Crabgrass Problem

The flexible tine harrow made by Fuerst Bros., Dept. AB, Rhinebeck, N. Y., is said to be fine for scarification, pulverization and other operations that reduce compaction. The harrow loosens matted grass and gently cultivates top soil and raises crab grass runners so that a mower can get at them. The tine harrow is available in a 6 ft. and two 10 ft. models. It is marketed by West Point (Pa.) Products Corp.

From Halifax, N. S. to Homestead, Fla.

**MILLIONS OF PEOPLE  
are PLAYING GOLF ON  
COURSES**

New De Luxe Designs  
Built and designed by  
**ARLAND**

Over 500 courses nationwide.  
7 Toby Lane, Jericho, N. Y.

**J. PRESS MAXWELL**

*Golf Course Architect*

Member:  
American Society of Golf Course Architects

**Design** **Construction**

3855 WALNUT HILL LANE

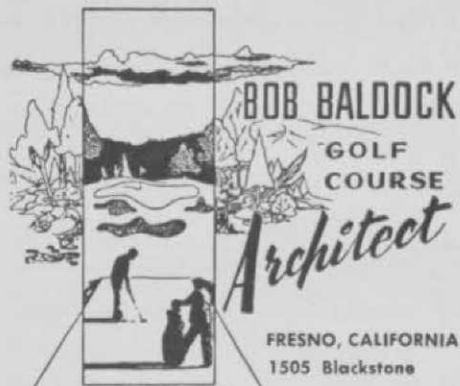
BOX 767

DALLAS, TEXAS

ASPEN, COLO.

Tel. FL 2-8889

Tel. WA 5-3409



### 11 Aqua-Dial Valves Work on New Timer System

The all new Aqua-Dial 551 automatic lawn sprinkler controller, now being made by Claval Co., Newport Beach, Calif., has an easy-to-



set timer, many years in the development stage, that can be operated without any more trouble than an alarm clock. The unit controls up to 11 Aqua-Dial valves, with precise watering time for as many different areas being set up by simply turning the appropriate dial. The changing of one dial setting does not affect any others, and when desired, the 511 system can be changed to manual operation. The controller is corrosion proof and there is a tamper proof cover to prevent dial changing by unauthorized

persons. Complete information can be obtained from Aqua-Dial, Newport Beach, Calif.

### St. Clair Heads Spalding's Custom Built Club Dept.

John M. St. Clair has been named mgr. of the custom built club dept. of A. G. Spalding & Bros., Chicopee, Mass. He is in charge of all special order clubs and club repair work. A former pro, St. Clair has been with Spalding for nearly 25 years and in 1953 became chief inspector of club manufacture. He is a former member of the New England Public Links Assn. and for five years was pres. of the Memorial GC in Springfield, Mass.

### Southeastern Pipe Folder Tells How Money Is Saved

A folder recently published by Southwestern Plastic Pipe Co., PO Box 117, Mineral Wells, Tex., points out how money is saved with a plastic pipe sprinkler system. It cites low cost of installation; lower operating costs due to minimized water losses; and low maintenance costs because of resistance to most chemicals and soil elements. Job engineering assistance is offered in the folder. Installation is described as being as simple as ditching, assembling, testing and backfilling.

## WILLIAM P. BELL & SON

### GOLF COURSE ARCHITECTS

Member: American Society  
of Golf Course Architects

544 Sierra Vista Avenue  
Pasadena, California

Sycamore 3-6944

ATlantic 7-2933

## ROBERT TRENT JONES

Member:  
American Society of Golf Course Architects

Golf Course  
Architect

20 Vesey Street

Tel: Beckman 3-1023

NEW YORK, N. Y.

## Wm. F. Mitchell *Golf Course Architect*

NORTH SUTTON • N. H.  
P. O. Box 7 Phone: 441

NEW YORK 36 • N. Y.  
520 Fifth Av. Phone: Murray Hill 2-5844

POMPANO BEACH • FLA.  
P. O. Box 2004 • Phone: WEBster 3-9343

## William F. Gordon *and*

## David W. Gordon

Golf Course Architects

Doylestown, Pennsylvania

Fillmore 8-4243

Members American Society of Golf Course Architects

### Complete Merchandising Kit

Golfcraft, Inc., Escondido, Calif., and Chicago, has completed mailing of a merchandising kit to 6,000 pros throughout the U. S. In the kit



are the 1960 catalog, price lists, point of purchase displays, order blanks, reprints of 1960 ads, a Glasshaft booklet and a putting booklet written by Art Wall, Jr. The contents are packaged in a convenient file folder.

Bill Casper, Jr., touring pro and winner of the 1959 National Open, has joined the staff of Etonic, according to Robert A. Eaton, vp, Charles A. Eaton, Co., Brockton, Mass.

## GOLF COURSE CONSTRUCTION

By CONTRACT

### MADDOX CONSTRUCTION COMPANY

Phones: EXport 7-6600  
Hickory 2-2411

Rankin, Illinois  
Danville, Illinois

### Instant Drying Grip

Hol-Tite Products, Inc., PO Box 464, Lyndhurst, N. J., is marketing its new aerosol product, Spray Grip. It is a new and improved instant drying grip that is packaged in a 350 measured container for golf, bowling, etc. The silver and blue containers are packed 12 to a display box. Information about the product can be obtained from local sporting goods jobbers.



### Locker Door Valet Adds Storage Space

Locker Door Valet, made by Western Binding & Pad Co., 908 Broadway, Kansas City, makes the inside of the locker door available for storage of small items. It is 11 ins. wide by 5 ft. long with six roomy pockets and two smaller ones. Locker Door Valet is made of heavy duty fabric and has nylon cords for hanging purposes. Prices and terms are available to pros upon writing to Western Binding & Pad.

## ALFRED H. TULL

Golf Course Architect

35 White Street  
New York 13, N. Y.

Tel. Walker 5-3822

## GOLF COURSE CONSTRUCTION

25 years' experience

*R. Albert Anderson*

6300 Gulf of Mexico Drive, Longboat Key, Fla.

3814 Washington Ave., Racine, Wis.

### Newport C-1 Has Seven Distinguishing Features

Samuel Backus, pres. of Newport Bluegrass Assn., McMinnville, Ore., says these are seven things that distinguish the new Newport C-1.



Backus (r) and Tommy Shannon, pro at Orchard Lake CC, Birmingham, Mich., sample Newport C-1 turf quality.

They are: Intense color; Turf density; Usually high seed quality; Drought resistance; Color retentiveness; Good response to only moderate fertilizer applications; Extremely well developed root system. All these, Backus declares, result in fast establishment of the grass, outstanding beauty and rugged performance.

**Complete  
TURF PLANTING SERVICE  
ALL CONTRACTS BONDED  
CERTIFIED U-3 & TIFGREEN**

**BERMUDAS**

*Ready For Immediate Shipment*

**LYNDE & ROWSEY**

402 Commercial Natl.

MUSKOGEE, OKLAHOMA

Phone MU 2-5277

### Wilson's Women's Brochure

Wilson Sporting Goods Co. recently released its Press, Radio and TV brochure on its women's advisory staff members. Biographical information and playing records are included for each of the seven women who make up the advisory board. There are also a record of 1959 Ladies PGA events and the important amateur and open tournaments.

### Etonic Off-Fairway Model

Etonic has introduced an off-the-fairway 'Wash-n-Wear' casual shoe made of genuine imported pigskin in a slip-on style. The color scheme is gray and scarlet. The shoe is specially treated with Scotchgard brand leather protector to resist moisture, soiling etc. There is a heel to toe cushion inner-sole. The shoe is available in pro shops only. It is made by Charles A. Eaton Co., Brockton, Mass.



**For Your Convenience  
Buyers' Service • P. 103**

## R. A. DUMAS COMPANY, INC.

WAREHOUSE POINT, CONNECTICUT

**Golf Course**

**IRRIGATION ENGINEERING**

Design, Supervision and Consultants

Distributors of:

Johns-Manville Transite

Buckner Valves and Sprinklers

Ames Portable Aluminum Pipe

Milland, Myers & Marlow Pumps

Aqua-Dial Automatic Systems

NATIONAL 3-4471, 3-0368

## COMPLETE GOLF COURSE CONSTRUCTION

- Turf Agronomist—R. L. Elder
- Design & Const. by contract E. B. Ault
- Design and Engineering:

**COMPLETE AGRONOMIC AND  
CONSTRUCTION SPECIFICATIONS**

*Design and Construction  
for Renovation of Existing  
Golf Courses*

**Thomas E. Carroll and Son, Inc.**

15710 Colasville Rd., Silver Spring, Md. • EV. 4-5499

## RALPH PLUMMER

### GOLF COURSE ARCHITECT

Member, American Society  
of Golf Course Architects

10330 Kilkenny • Dallas, Texas  
Davis 7-3136

## DAVID W. KENT & CO. GOLF COURSE ARCHITECTS

Designers, Site Engineers, Builders,  
Maintenance Supervisors  
for over 40 years.

Consultant Services Available to Established  
Golf Courses.

8535 Melvin Ave.  
NORTHRIDGE, CALIF.

Dickens 4-6020

Dickens 5-2788

### Dowling Named Vp as Spalding Announces Big Reorganization

Substantial reorganization changes were made by A. G. Spalding & Bros. in mid-May. Edward G. Dowling, former market dir. of the sales div., was named vp, joining Bob Jones in that



Edwin L. Parker and Edward G. Dowling

category. Jones has been a vp since 1931. Before coming to Spalding, Dowling was with American Tobacco Co. and later Eversharp, Inc., where he was vp and general sales mgr.

Edwin L. Parker, Spalding pres., now also serves as pres. of the Spalding Chicopee div.,

which is newly created. James M. Long is vp, manufacturing, of this div.; Robert P. Molitar is its vp of research and development; Dowling, vp of marketing; David G. Christensen, secy.-treas.; and Ronald R. Taylor, div. controller.

A new div. also has been created in St. Louis. It is known as the Rawlings div. and its officers are: Claude E. Carr, pres.; Ralph J. Thompson, vp of manufacturing; Thomas M. Elliott, vp of marketing; Walter B. Wegman, secy.-controller; and T. P. Schott, asst. controller.

Reorganization of the Spalding setup, Parker said, is to assure complete autonomous operation of two important divs. that operate 13 plants on a worldwide basis. All of the above mentioned promotions were made within the company in keeping with Spalding's policy, wherever possible. Besides 13 plants, Spalding has 32 distributing branches throughout the world.

### Scott Has Electric Mower

O. M. Scott & Sons, Marysville, O., is marketing an electric mower that is said to be ideal for maintenance of the clubhouse grounds. It is quiet, has push-button starting, gives a uniform cut and smoothly disperses clippings. The mower is equipped with 50 ft. of 3-wire safety cord and optional is a cord handler reel with 125 ft. of cord. The blade can be sharpened without removal and it is possible to dial the height of cut.



## ROBERT BRUCE HARRIS

### Golf Course Architect

MEMBER AMERICAN SOCIETY OF GOLF COURSE ARCHITECTS

664 N. MICHIGAN AVENUE CHICAGO 11 • ILL.  
Whitehall 4-6530

## James G. Harrison

### GOLF COURSE ARCHITECT

Member  
American Society of Golf Course Architects

266 Harrison Road Turtle Creek, Pa.  
Valley 3-3444 Suburb of Pittsburgh



**GOLDEN ANNIVERSARY SEASON**  
 1910 1960

OPENS April 23 • CLOSES Oct. 23

**"GOLDEN PACKAGE PLAN"**  
 July 1—Sept. 5  
 4 full days—American Plan—\$80  
 per person including greens fees

**Shawnee Inn**  
 SHAWNEE-ON-DELAWARE  
 Box 10, PENNSYLVANIA  
 W. S. GARRISON, Gen. Mgr. • HARRY OBITZ, Golf Pro

**WITTEK**  
 for the best of the latest in  
**RANGE - PAR 3  
 MINIATURE**  
**EQUIPMENT - SUPPLIES - FIXTURES**

Write for complete catalog

**Wittek Golf Range Supply Co., Inc.**  
 5128 W. North Av., Chicago 39, Ill.

**New Half-Ton Roller Has  
 Many Uses Around Club**

General Engines Co., Inc., U. S. Route 130, Thorofare, N. J., is producing a new ½ ton roller that has many applications around a coun-



try club. It can work flush against building lines and curbs and has a tight turning radius. Simplicity of operations and maintenance are other features claimed for the roller. General Engines produces a complete line of rollers ranging from ½ to 6 tons. Inquiries from supts. are invited by General Engineers.

**MacGregor Tourney Clubs**

The 1960 MacGregor Tourney woods have Eye-O-Matic 60 aluminum buttons in the center of the face as firing pins to give extra power and yardage. Pro-Pel Action shaft comes in four different flexes, with the flex area being closer to the clubhead for greater distance and accuracy. The Firma-Grip has built-in tackiness. The tourney irons feature the Flame Ceramic face and the recessed weight principle, with the weight behind the hitting area blended into the original forging so as to concentrate it over a larger area of the face. Pro Pel Action and Firma Grip also are features of the irons.



**Doesn't Damage Greens**

The Atwood Terra-Car Utilicar model, said to be the "workhorse" of the country club by the manufacturer, Terra-Car Corp., 2207 Big Bend Blvd., St. Louis 17, has been used on greens for spraying. This can be done, the company says, because the Utilicar exerts less pressure on turf than any other car of its kind.

**FAIRWAY IRRIGATION SYSTEMS**

**BUCKNER**  
 SPRINKLERS

automatic  controls

**AQUA-DIAL**  
 Manual Automatic Semi-Automatic  
 REPORTS DESIGN SUPERVISION  
 Registered Engineer Available

**THE CLAPPER CO.**  
 Lock Box "A" Boston 65, Mass.

**GOLF BAG TAGS**  
 CLUB MEMBERSHIP TAGS  
 PUNCH BOARDS  
 "I-D" CLUB IDENTIFICATION LABELS  
 GOLF PRO STATIONERY  
 CADDIE & WAITERS BADGES  
 GOLF CLUB DISPLAY FIXTURES  
 "CLUB CADDIE" CARRIERS  
 GOLF COURSE SIGNS

IRVIN E. SCHLOSS

**MILLER GOLF PRINTING**  
 2053 HARVARD AVE., DUNEDIN, FLA.  
 SEND FOR CATALOGUE

GOLFERS SAVE STROKES WITH  
**SPRAY-GRIP**



**HOL-TITE**  
SPRAY GRIP

**STOPS SPORT-GRIP SLIP!**  
350 Measured Sprays!  
Applies exactly  
the amount necessary!

Assures a natural grip!  
Handy, compact, easy to use.  
Order directly from your Hol-  
Tite jobber or write for cata-  
log sheet "G"

**HOL-TITE PRODUCTS INC.**  
P.O. BOX 464 • LYNDBURST, N. J.



Nationally known  
trophies carried in  
stock for immediate  
shipment.

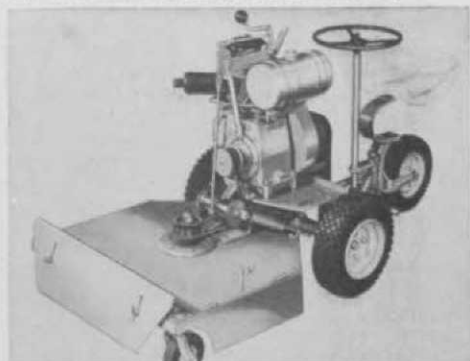
Professional discount  
**33 1/3%**

Write for free  
catalog — 1960  
Our 18th Year

**SPORTS AWARDS CO.**  
429 W. Superior St.,  
Chicago 10, Ill.      Superior 7-6034

### Jacobsen's Mow-Mobile 34 Put Into Production

Field tests on the Jacobsen "Mow-Mobile 34", a 5-wheel riding rotary, have been completed and the unit is in full production. It is powered



by a 9 hp, 4-cycle engine and has variable forward speeds and reverse drive. The cutting head has a heavy duty cutter bar that cuts a 34-in swath. Mow-Mobile 34 is well adapted for uneven terrain and for working in high weed, seldom mowed areas. It is highly maneuverable and the heavy duty engine permits mowing at moderate speeds without stalling. The mower

has a specially designed side discharge chute. Special attachments include a special handle for those who want to walk behind the mower on hills, close-coupled 42-in. snow blade, leaf mulcher and electric starter and generator set.

### Story Of An Iron

A recent issue of Wilson Sporting Goods Co's "Memo" carried a pictorial story of the construction of iron clubs. It pointed out that from the raw forging to the final polish there are 125 operations involved in shaping and assembling an iron club and all are marked by the most minute matching, checking of weight tolerances and expert workmanship. Photos with the story show the grinding, pressing, corrugating, boring, stamping, enameling, baking and other operations.

### MacMurray, Jolly & Sons Are Hol-Tite Representatives

Hol-Tite Products Inc., PO Box 464, Lyndhurst, N. J., has named Ted MacMurray sales rep. for 13 Western states. He will handle sales of the spray grip from 5901 Jumilla ave., Woodland Hills, Calif.

Jack Jolly and Sons, Inc., 80 Verona ave., Newark, N. J., is Eastern distributor for Hol-Tite Products.

## Kill WATER WEEDS!

Water hazards and lakes now may be cleaned of all rooted aquatic weeds, Lily, cattail, milfoil and many other aquatic weeds are easily killed with one application of R-H GRANULAR WEED RHAP. It is easily applied — will not harm fish or animals. This inexpensive application usually lasts from 18 to 36 months. Write for further information or ask your dealer.

**REASOR-HILL CORPORATION**  
BOX 366C, JACKSONVILLE, ARKANSAS

**GOLF RANGES  
PAR THREE  
MINIATURE COURSES**



COMPLETE LINE OF GOLF  
EQUIPMENT AND SUPPLIES

Send For Illustrated Catalog.

**EASTERN GOLF CO.**

2537 BOSTON ROAD, BRONX 67, N. Y. Dept. A



### LIQUID-LUSTRE GOLF BALL WASH

Costs as little as 2c per washer per week!

- Keeps golf balls SPARKLING WHITE! ... Golfers satisfied!
- Perfectly safe for washers ... either hard or soft water!
- Will Not cause RUSTING!
- No unpleasant odor—Ever!
- Used at fine golf courses from coast to coast!

**ORDER YOUR SUPPLY TODAY!**  
 Per Single gallon.....\$4.75  
 5 gallons, per each gal. can 4.50  
 Order from your dealer or direct from DBA and give dealer's name.

**DBA PRODUCTS CO. INC.**  
 Deerfield, Illinois

Also Try  
**Aero-San**  
 Shoe  
 Deodorizer  
 and Sanitizer  
 Another fine  
 DBA Product



## LOCKER NAMEPLATES

Directory and Handicap Boards



Write for sample and prices

### KIRSCH CARD SERVICE

BOX 426X, ELMHURST, ILL.

### Mascaro Says Superintendents Like Lectro Mower

According to Tom Mascaro, pres. of West Point (Pa.) Products Corp., the new Lectro battery powered greensmower is being greeted



with a great deal of enthusiasm by supts. They are, Mascaro says, impressed by the following features: No vibration; low maintenance cost; perfect balance that gives more uniform cut; noise reduction; elimination of smoke and fumes; constant, even power; and easy repairability. West Point, in particular, points to the fact

that Lectro cuts down on mechanical problems and from an agronomic standpoint, soil compaction, which is caused partly by vibration.

### U. S. Rubber Has New Rules Book Available

"New Rules of Golf for 1960" is a pocket size booklet produced by United States Rubber Co. for distribution to golfers. It includes the rule changes that went into effect on Jan. 1. Subjects included in the compact illustrated booklet are details on rules for a ball lost or out of bounds, an unplayable ball, playing a provisional ball, lifting or cleaning ball, dropping and placing ball, on the putting green, obstructions clarified, minor violations and six basic forms of golf. The booklet also lists the U. S. Royal pro staff for 1960. "New Rules of Golf for 1960" is being made available through professionals.

### Combination Seat and Umbrella

A combination seat and umbrella, ideal for golf and spectator sports, is manufactured by International Home Products, Inc., 8401 Wilshire Blvd., Beverly Hills, Calif. Opened, the umbrella has a radius of about 50 ins. It has alternate gores or panels of red and yellow with a protective vinyl sheath. It weighs only 2 lbs.

## Golf Score Cards

Specializing in Printing for Clubs and Pros.

CHARGE CHECK BOOKS

HANDICAP CARDS and PANELS

BAG and GUEST TAGS

(WRITE FOR CATALOG)

VESTAL-MONROE PRINTING CO.

ESTABLISHED 1912

TELEPHONE HARRISON 7-6314

701 N. LA SALLE ST. CHICAGO 5

## ATTENTION

Driving Range Operators and Distributors. We specialize in rebuilding golf balls with strictly new materials. Satisfaction guaranteed.

### WAYNE GOLF BALL CO.

31117 Little Mack Ave.  
Roseville, Michigan

## Classified Ads

Rates: Minimum insertion \$4.00 for 20 words; additional words 20¢ each. Bold face type, 25¢ per word. Classified ads reserved for help or services wanted and for sale of used equipment. **NO CLASSIFIED ADS ACCEPTED AFTER THE 25th OF MONTH PRECEDING DATE OF ISSUE.** Under no circumstances are we permitted to divulge the name and address of those placing the blind advertisements. Response to all box number ads should be addressed to the box number, mail to **GOLFDOM, 407 S. Dearborn, Chicago 5.** Replies are promptly forwarded to advertisers.

### JOBS WANTED

Young Pro — married, wishes position in small club starting immediately. Will accept first offer with club offering \$400 a month with house or concession. Hard worker, honest and reliable. Address Ad 601 c/o Golfdom.

**ASSISTANT PRO JOB WANTED** — Age 21, single. Good player. Attended PGA school. Prefer New England area but will relocate anywhere. Address Ad 603 c/o Golfdom.

Seeking position as Pro, Asst. Pro, or in golf goods selling. Five years experience in sporting goods field. College education, excellent background and family. Will relocate. Address Ad 604 c/o Golfdom.

Pro-Greenkeeper-Combination. Teaching Pro and Greenkeeper presently employed, 40 years of age, desires all year employment. Will answer all inquiries. Address Ad 605 c/o Golfdom.

### MISCELLANEOUS

**FOR SALE:** In Southwestern Michigan resort Area: 18 HOLE GOLF COURSE, two story CLUBHOUSE with locker rooms, BAR & LIQUOR LICENSE, all clubhouse equipment; also golf course machinery, tools, etc. 12 BOWLING LANES & Building 5 years old, joined together with Clubhouse, Brunswick Automatic Pinsetters 3 years old. Large Pro Sales Room 2 years old. Total price \$500,000. Down payment \$200,000, will finance balance on mortgage at monthly payments. Address Ad 606 c/o Golfdom.

**For Sale:** 10 year lease on 9 hole golf course, fully equipped, DI beer license. City of 80,000. Price — 1 yrs. gross plus inventory. Address Ad 602 c/o Golfdom.

**For Sale:** 2000 used range balls, painted 2 coats & striped red @ 18¢. Also used practice range mats \$3 to \$10.00 each. Highland Golf Range, Inc., 3601 Green Rd., Cleveland 22, Ohio.

**GOLF BALLS REPAINTED. BADGER GOLF CO., WATERFORD, WISCONSIN.**

### WANTED FOR CASH

Old golf balls retrieved from ponds, or out of bounds on or around Golf Courses.

Cuts and bumped ..... \$0.30 per doz.

Off brands and synthetics, or slightly nicked ..... 1.50 per doz.

Round and perfect \$1.25 brands for refinishing ..... 2.40 per doz.

Like new top grade for rewashing ..... 3.60 per doz.

**NOTE:** Golf range balls, picked over lots, and cut deep into the rubber types wanted, but not acceptable at above figures.

### Send for Shipping Tags and Instructions GOLF BALLS FOR RETAIL SALES

Reprocessed with 100% brand new Balata cover, snow white enamel and imprinted with distance, trade name and number. We accept your mixed compression cores and return only high compression (no shrinkage) at no additional charge. A fast seller at 50¢ to 65¢ each. Bulk — your cost on exchange \$2.65 per dozen. We are nation-wide Distributors of the best in golf range and miniature course equipment — balls, clubs, mats, etc. Send for catalog.

### NORTHERN GOLF BALL CO.

2350 W. Roscoe Street

Chicago 18, Illinois

## Sit-N-Rest Has "Pro Only" Cart-Bag Sales Policy

Sit-N-Rest Golf Bag Corp., 2404 W. Clybourn st., Milwaukee 3, Wis., has announced a policy of "Pro Only" for Cart-Bag sales. Four new model Cart-Bags are available and some of their features include the following: New handle design, snap fasteners on inner ball pockets, sturdier seat, improved ball bearings for more 'feather touch' pulling and new plastic retainers for wood club pockets. Accessories include 'Handi-Hold' extra pocket units, rain cover with access zippers, replacement bag units for color variety or to replace damaged bags. Pro shops can obtain literature, merchandising ideas and display materials by writing to Sit-N-Rest.



## K & M Announces Executive Changes in District Offices

Keasbey & Mattison Co., Ambler, Pa., has made several executive changes in its Chicago, Cleveland and New York offices and opened new offices in Los Angeles and St. Louis to handle expanding asbestos-cement pipe sales. D. W. Frasier is now mgr. of New York, having been transferred from Chicago where he was dist. mgr. H. J. Corson and Frank Q. Chambers are directing industrial products and building product sales, respectively, in Cleveland. T. A. Harper, formerly asst. dist. mgr. has been named mgr. of industrial products in the Chicago office.

## Michigan Sprinkler Clinic

Michigan Sprinkler Co., Royal Oak, recently was host to dealers, suppliers, course architects, supts., etc. at a two-day sprinkler irrigation clinic. Speakers were Herb Clark, Buckner's chief engineer; John Schrunck, Cornell Pump; Robert Harper, Aqua-Dial and John Muller, Farmland Irrigation Co. More than 100 persons attended each of the two day sessions.

## Sawyer Returns to Plymouth

Eddie Sawyer, who resigned as manager of the Philadelphia Phillies the day after the 1960 season started, has resumed his old position as vp in charge of sales promotion for Plymouth Golf Ball Co., Plymouth Meeting, Pa., according to James G. Hogg, pres.

Harold Peterson, MacGregor sales rep in Arizona-Southern Calif., is the first recipient of the Stanley M. Clark Memorial Trophy for the salesman with the best credit record in his territory. Stan Clark was MacGregor's credit mgr. for many years.