

NOW AVAILABLE NEW LO-BLO #6

DEVELOPED SPECIALLY
FOR GOLF COURSES

LIGHT WEIGHT 85 LBS.
BLAST VELOCITY
OVER 140 M.P.H.

Allows quick, safe re-
moval of aerating
plugs on greens; leaves,
twigs, sticks, acorns, etc.

EQUIPPED WITH
10x3.50
PNEUMATIC TIRES

LO-BLO, the AIR-BROOM

keeps courses tidy year around,
handles the leaf problem, per-
mits play all thru the
Fall Season . . .



You just walk this ter-
rific blast of air "wind-
row" fashion to clean
an area faster, better
than 6 men. Quickly
grooms greens, aprons,
traps . . . leaves and
litter around the Club-
house and Parking
areas. Especially valu-
able for Fall play. 100's
now in use. 3 sizes
made, starting @
\$146.50. Write or call
for a demonstration.

ATWATER-STRONG CO.

Atwater, Ohio
Phone WHitehall 7-2344

Morgan Joins First Flight as Sales Vice President

Patrick N. Morgan has been named vp and sales mgr. of First Flight Co., 99 Tremont st., Chattanooga, Tenn. Morgan, an engineering honor graduate of Alabama University, was formerly connected with John Wood Co., Conshohocken, Pa. as vp and Eastern sales mgr. He is a member of the President's council at Alabama University which is promoting that school's multi-million dollar development program. The new First Flight executive comes to a company that, it is reported, nearly doubled its sales volume in the last year. It already has a large backlog of orders for its 1960 clubs. First Flight has sales reps in 50 states, Japan, Central and South America and South Africa.



Crofton 'Bug' for Utility Use

Crofton Marine Engine Co., 888 Gull st., San Diego, is producing a 4-cylinder gas engine weighing 1,100 lbs. that is designed for off-highway use and should have particular appeal for course supts. Known as the "Bug," the Crofton model has a 63-in. wheelbase, overall length of 111 ins. and a 35 hp overhead cam, liquid cooled engine.

Wiley General Sales Manager for Aero-Thatch, Inc.

Robert Wiley has been named sales mgr. of Aero-Thatch, Inc., Rahway, N. J., James Smith, pres., has announced. Wiley has been active in the turf field for many years and is associated with the Fertl-Soil Co. He has helped in the development of the C-H-I-A method and Aero-Thatch machines. The company makes two basic machines for complete turf renovation and maintenance employing the continuous horizontal invert aeration principle.

Press Maxwell Signs Maury Bell

Golf architect J. Press Maxwell of Dallas, has hired D. M. (Maury) Bell to take charge of construction of Maxwell courses. Prior to the retirement of D. B. Bell & Son, Inc. from wide operations as golf course supply and equipment dealers, Maury was associated with his father, D. B. for 30 years. Now D. M. is limiting his business to that done from his Denver headquarters. Maury also has worked closely with O. J. Noer and other turf specialists.

Putter with Triangular Head

Warson Mfg. Co., 907 E. Ogden ave., Naperville, Ill., offers a unique putter that combines the advantages of both the mallet and blade type club. The head, triangular in shape, is made of aluminum and the shaft is Damascus chrome-plated steel with leather grip. A sighting groove is at right angle to the plane of the striking face.

CREEPING BENT STOLONS

Arlington C-1,

Congressional C-19

Old Orchard C-52

Old Orchard Turf Nurseries

P. O. Box 350 — Tel. AL 6-6395 — R. R. Bond, Prop. — Madison, 1, Wisconsin
Branch Nurseries in Farmington, Iowa — Camarillo, Calif.

Why wait a year for seeded bent greens to mature? Plant Old Orchard stolons, playable in six to eight weeks.

THE GREENS ARE THE FOUNDATION OF ALL SUCCESSFUL GOLF COURSES

Toro Has Another Record Year as Whirlwinds, Sportsman Lead Way

Toro Manufacturing Corp., Minneapolis, reported sales of \$18,225,000 for the year ending July 31. The figure was 23 per cent ahead of last year's total and the highest in Toro's 45-year history. Success of the Whirlwind rotary mowers, with "Wind-Tunnel" action, and the Sportsman riding mower, was largely responsible for the record total. Domestic and foreign sales of these units were up 32 per cent over the previous year. Institutional sales of Toro's large machines increased seven per cent. Robert W. Gibson, vp and sales and advertising head, said that the 1959-60 year is off to an unusually good start.

Three Pick Rosburg in Spalding Contest

In Spalding's contest for sports writers and broadcasters to pick the top three finishers in the 1959 PGA Championship, only three men named the winner. They missed in their selections of the second and third place finishers. Picking Bob Rosburg to win were Otto Mason, Quincy (Mass.) Patriot Ledger, Lloyd McGovern, Palo Alto Times and Bill Laws, Station KEWB, Oakland, Calif. Only Bob Cady, Quincy Patriot Ledger, picked Jerry Barber to finish in the first three and none went along with Doug Sanders.

West Point Has Best Year

West Point (Pa.) Products Corp's past fiscal year was the best in the company's history, according to Tom Mascaro, pres. Introduction of the JR model Aerifier as a 5-in-1 turf tool was a key factor in greatly increased sales of the firm's products. The VC-12 Verti Cut and Aer Lift Trailer also played important parts in giving a rosier tint to the profit picture.

Envoy Used at Concord

Envoy, the 4-wheel fiberglass electric car made by Electric Manufacturing Corp., Freeport, N.Y., will be used for the next five years at the International GC, Concord, N.Y. The agreement to use the car was made by A. R. Winarick, Concord owner, and Alvin Sussman, Electricar pres.

Etonic Has Several Features

Waterproof Etonic golf shoes, made with giant removable spikes, have full cushion inner-sole, flexible counter and soft stretchable lining. The photo shows the man's shoe. The same type also is available for women. Etonics, according to the manufacturer, are 100 per cent waterproof. They are available only in pro shops.



American Mat Brochure Available

A brochure on floor mats, tile and stair treads, produced from Myracord compound (quality rubber reinforced with Nylon synthetic fiber) is being offered by American Mat Corp., 1802 Adams st., Toledo 2, O. American Mat points out that Myracord is practically indestructible, is exceptionally slip-resistant and is easy to clean.

Wooden Putter and Baffy

First "T", 98 S. Fullerton ave., Montclair, N. J., is marketing two clubs, a wooden putter and wooden baffy, designed by Al Liebers. The putter is used in croquet mallet fashion and is said to be a legal weapon. The baffy is recommended for getting loft and distance out of traps and roughs.

National Distributors Hold First Sales Meeting

First annual sales meeting of National PGA Distributors, Inc., was held in Granville, O. in mid-August. Sales reps previewed the 1960 PGA merchandise line which includes more than 20 items, all tested and approved by the emblem specification committee of the professional organization.

William D. Schaffner, pres. of National PGA Distributors, Inc., has announced that the firm of Mayer and O'Brien, Inc., 333 N. Michigan ave., Chicago 1, has been retained by the distributing company as public relations counsel.

GOOD ROADS MULCH-VAC SWEEPER

ideal
for
golf
courses



....Eliminates Leaf Removal
and Disposal!

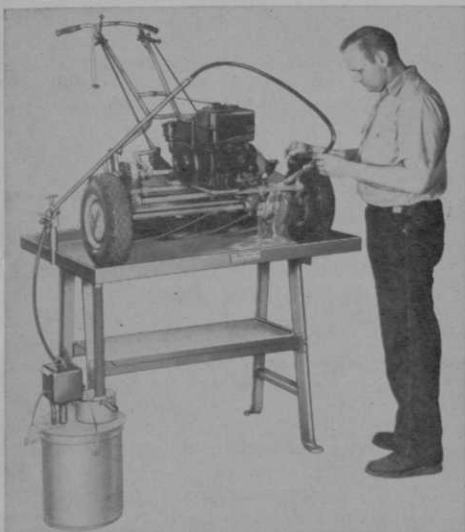
Towed-Type. Cleans 6' 5" width at one pass—25 to 30 acres per 8 hour day. Picks up leaves by vacuum suction, thoroughly mulches and spreads them evenly over the ground. Leaf mulch disintegrates to a natural fertilizer. Does the job in hours that takes many men days.

Also available: Small self-propelled "walkie" model for obstructed areas or club-house grounds. For further information write:

GOOD ROADS MACHINERY CORPORATION • MINERVA, OHIO

F-R-H Develops Stand for Cleaning Mowers

Safe, efficient cleaning of mowers, engines, etc. can be easily and economically accomplished with standard solvents with aid of a new cleaning stand developed by Fate-Root-Health Co., Plymouth, O. Basic components of the stand are



a 12-gauge metal sink sloped to one corner and a separate motor pump unit which clamps to a 5-gal. drum of solvent. The sink supports the largest and heaviest mowers. The motor pump recirculates up to 2 gals. of solvent a minute and dirt and grease are caused to settle in the bottom of the drum. Only clean solvent is picked up and recirculated. There is no spraying or splattering of the liquid. F-R-H's new stand is known as Model 80.

Bonner Publicizes Plymouth

Jim Bonner, well known sportscaster for WRCV and WRCV-TV, Philadelphia, has been added to the publicity and promotion staff of Plymouth Golf Ball Co., Plymouth Meeting, Pa., James G. Hogg, pres., has announced. Bonner is mc of a popular TV show, "Divots and Duffers."

repair your own

GOLF CLUBS

by Hugh M. Gordon

FORE! A sure hit for the Amateur and Professional Golfer not skilled in "Resetting or Replacing the Grip," "Putting Lead in a Wood Club Head," and many other golf repairs . . . detailed descriptions with illustrations.

PRICE \$1.00. AT LEADING BOOK-STORES, OR FROM

THE DIETZ PRESS, INC.

109 East Cary Street • Richmond 19, Virginia

USED GOLF BALLS WANTED

For cash or in golf balls. 30 years in the used golf ball business. Supplier of Golf Ranges, Par 3 and Miniature golf courses.



Ask for details and shipping information

**EASTERN GOLF CO., 2537 Boston Rd.
Bronx 67, N. Y.**

AMERICA'S FINEST GOLF PRACTICE NET

made with United States Rubber Company's shock absorbent ENSOLITE

—a tough expanded cellular plastic pad sewed to heavy duck and designed to withstand the terrific impact of high velocity drives. Prevents ball rebound.

- Easy to set up — INSIDE OR OUTSIDE • Back drop 8' wide 9' high • Ensolite pad 4' x 6' • Side nets 8' x 9'\$98.00 F.O.B. Factory
- 8' x 9' back drop and Ensolite Pad.

Please enclose check, money order or purchase order.



SOUTH BEND PRODUCTS SALES

1422½ Mishawaka Ave. South Bend, Indiana

Leading Country Clubs
Use South Bend Golf Practice Nets

New Laher Model Designed To Minimize Turf Damage

With an eye to minimizing damage to turf, Laher Spring & Tire Corp., 2615 Magnolia st.,



Oakland, Calif., has designed its "Turf Kare Kar" so that weight is spread over such a large ground contact area that, it is claimed, weight per sq. in. is less than that of the average man.

The car is equipped with three Goodyear "Terra-Tires." These are extra wide, measure 12 x 15 ins., are 16 ins. in dia. and carry 9 lbs. of air each. Turf Kare has been driven repeatedly over a man's hand without causing injury and it has been driven in a tight circle over a freshly watered green without leaving any marks, according to the manufacturer. The car is said to be capable of going from 36 to 54 holes without recharge. The new model features the Laher Sililon Diode charger which eliminates the most critical cause of battery failure — overcharging.

MacGregor Completes Film on Golf Ball History

The MacGregor Co's Ad and Marketing Services Dept., 4861 Spring Grove ave., Cincinnati 32, O., is making available the 21-minute film, "The Center of Attraction," a pictorial, step-by-step history of the golf ball. It covers the feather, gutta percha and modern era of ball manufacturing and is narrated by Harry Wismer. The early ball sequence was filmed in the USGA's Golf House and the modern one in MacGregor's Cincinnati plant.

BUYERS' SERVICE • P. 85



PUTTING PAL MAGNETIZED BALL MARKER

SELLS ON SIGHT

½" brightly colored, easy-to-see, metal golf ball marker. When not in use it clings to attractive white plastic, magnetized golf-ball design pin. Instantly at hand, on shirt, blouse, belt loop or golf bag. Continuous convenience—fine gift.

Pro Price: \$7.20 doz.
Retail: \$1 each

Free — attractive self-seller counter display — holds 12 Putting Pals. Extra supply of markers permits pro to replace them free.

PUTTING PAL CO.
P.O. Box 3483, St. Paul, Minn.

Insist on PAR TUBES

For the best in quality

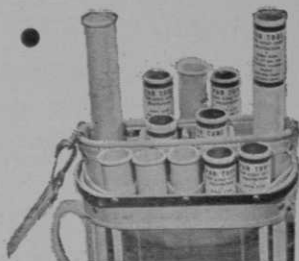
LOOK FOR THE NAME ON THE TUBE

- Moisture-proof fibre (regular) Ret. 30¢ ea.
- Plastic—Made of KRALASTIC, the best known material for this purpose. Non-Brittle - Strong - Rolled edge. Ret. 55¢ ea.

Packed in display cartons of 42 and 144

PAR TUBE

139 S. Albany Ave.
CHICAGO 12, ILLINOIS



Contact Your
Distributor or

Par Golfer in Reverse Twist



DiFini Originals, Inc., manufacturers of golf slacks, is introducing a "reverse twist flannel," imported from Italy and tailored in a new and versatile Par Golfer model. The slacks have a matching removable and adjustable full length belt and can be worn for dress as well as golf wear. The new Par Golfer slacks are recommended as gifts and soon will be available in several other fabrics. They can be bought in pro shops.

Rhap-20 Knocks Out Aquatic, Turf Weeds

R-H Weed Rhap-20, a granular 2, 4-D, made by Reasor Hill Corp., Jacksonville, Ark., performs equally well in eradicating aquatic and turf weeds. It also has proved to be effective in control of annual grasses. The manufacturer recommends uniform coverage with Rhap-20 and if temperature and moisture conditions are normal, good results will be obtained. Rhap-20 is advertised as a growth regulator, most effective during times of good growth.

Colonial Motor Co., 3219 Holmes st., Dallas, Tex., has been named a distributor by Keasbey & Mattison Co., Ambler, Pa., manufacturer of asbestos-cement tubular products.



Spalding's Christmas package Distance Dots are available in gift boxes of one dozen and a half dozen. The boxes are in ebony, of simulated leather, lined in red with spring-hinge cover embossed with a gold Fleur-de-Lis design. Orders of a dozen are personalized free.

Stonco Electric Products Co., Kenilworth, N.J. is marketing a new Power Beam floodlight that makes replacement very easy. At touch, a heavy duty steel coil spring pops the old lamp out and the new lamp can be quickly snapped in.

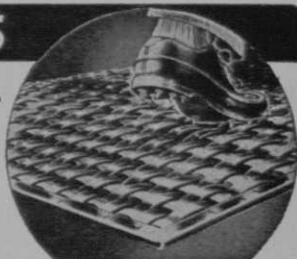
Horace C. Shuman has been named general mgr. of West Point Products Corp., West Point, Pa. He comes to West Point from Conoflow Corp., where he was production mgr. for eight years.

SAVE CLUB HOUSE FLOORS

WITH SPIKE-RESISTANT PNEU-MAT RUNNERS

Protect your floors from spike holes with rugged Pneu-Mat Runners. Absolutely spike-resistant, they provide a comfortable walking surface—improve the appearance of your club house.

Woven of rubber-impregnated fabric, Pneu-Mat Runners are tougher than rubber runners. Reversible for double wear.



Money Back Trial Offer: Order a trial section. Test it on an area which gets especially hard wear. Money back if not satisfied.

STANDARD WIDTHS

20" - 24" - 30"
36" - 42" - 48"

Trial Section

24" x 60"
\$12.50 postpaid

Write today for illustrated folder

SUPERIOR RUBBER MFG. CO., INC. • 145 Woodland Ave., Westwood, N. J.

VAUGHAN'S For

Penncross Bent
Quality Grass Seed
Fertilizers
Golf Course Supplies
Fungicides
Sodar Crab Grass Killers

Golf Catalogue on Request

VAUGHAN'S SEED CO.

Golf Division

85 WHITE STREET, N. Y. 13, N. Y.

WITTEK

for the best of the latest in

RANGE - PAR 3 MINIATURE

EQUIPMENT - SUPPLIES - FIXTURES

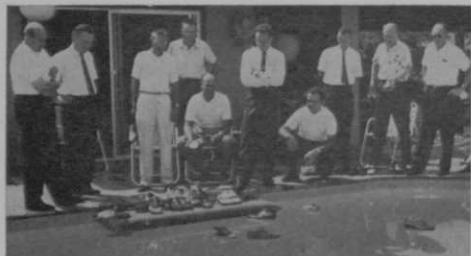
Write for complete catalog

Wittek Golf Range Supply Co., Inc.

5128 W. North Av., Chicago 39, Ill.

Weatherized Joyce Shoes Equal to Floating Test

Salesmen for Bowen, Inc., manufacturer of Wm. Joyce golf shoes, saw a pool test of the 1960 Joyce line at a sales meeting held recently at the Pasadena, Calif. home of Kip Bowen, pres. of the firm. Complete water repellency of the "weatherized" shoes was demonstrated when they were tossed into the pool to float and



then removed without absorbing a single drop of water. The shoes resisted curling after floating for several hours, according to the manufacturer. The weatherizing process used on Joyce leathers was developed by Minnesota Mining and Mfg. Co. Joyce shoes in men and women's styles are available in pro shops throughout the U. S.



MacGregor's Christmas gift pack with a dozen, half dozen or three Tourney balls, each boxed with a durable green plastic putting cup, gives the golf shopper a good selection in a rather wide price range. These "Gift to Good Golf" packages are done in green, white and gold.

Portable Shoe Polisher

Now available is a portable, electric shoe polisher made by Dremel Mfg. Co., Racine, Wis. It weighs 7½ lbs. and holds separate polishing bonnets (one for brown, one for black) that twirl at 1,500 rpms. A suede cleaning attachment also is available. Dremel is offering the unit to golf clubs at professional rates.

RYANS O.K. No. 4 SEEDER & SPREADER

4 Cu. Ft.(300 lbs) Capacity-3 Ft. Spread



No Holes to Clog.
Quick Shut-off Lever &
Adjusting Gauge
Screw On Handle
Spreads Top Dressing,
Nitro-Humus, Peat,
Commercial Manure
& Other Materials
Successfully
Weights Only 69 Lbs.
Write Dept. "G"

DEALERS WRITE FOR OPEN TERRITORIES

H. & R. MFG. CO., Los Angeles 34, Calif.

COLBY PIONEER PEAT

Products for building and maintaining golf greens are available in winter storage for prompt shipment.

BLACK—cultivated fine milled for top dressing.

BROWN—peat for building new greens.

GREENS—top dressing (1/3 peat - 1/3 sharp sand and 1/3 loam), or any required proportion.

QUOTATIONS on materials packed in plastic lined bags, or in bulk gladly furnished.

COLBY PIONEER PEAT CO.

P.O. Box 115

HANLONTOWN, IOWA

LOCKER NAMEPLATES

Directory and Bulletin Boards



Write for sample and prices

KIRSCH CARD SERVICE

BOX 426X, ELMHURST, ILL.

Kill WATER WEEDS!

Water hazards and lakes now may be cleaned of all rooted aquatic weeds, Lily, cattail, milfoil and many other aquatic weeds are easily killed with one application of R-H GRANULAR WEED RHAP. It is easily applied — will not harm fish or animals. This inexpensive application usually lasts from 18 to 36 months. Write for further information or ask your dealer.

REASOR-HILL CORPORATION

BOX 36GC, JACKSONVILLE, ARKANSAS

Par-Aide Develops Scoreboard for PGA Championship

Introduced at the PGA Championship in Minneapolis was the all-aluminum scoring standard (top of photo) developed by Par-Aide Prod-



ucts Co., St. Paul. Excellent visibility is claimed for the portable scoreboard which weighs only 10½ lbs. It was developed by Joe Garske, who got started in the golf equipment supply business in 1946 when he designed a widely accepted tee and yardage marker plaque. Since

then Par-Aide has scored repeatedly with beautifully designed ball washers, receptacles, benches, chairs, etc.

Murle MacKenzie Joins Golcraft Advisory Staff

One of the bright young stars of the Ladies PGA tour, Murle MacKenzie, has joined the advisory staff of Golcraft, Inc., Mark Cox, vp, has announced. Murle turned pro at 17 and has been playing the tour for about three years. Through mid-August, she had won around \$4,600 for 1959. Her best effort came in the Alliance (O.) International when she tied for second with a 292. She also distinguished herself in the St. Petersburg Open, Virginia Beach Open, USGA Women's Open and LPGA Championship.

Instructions on Records

Fairway Records, Inc., 8447 Wilshire blvd., Beverly Hills, Calif., is marketing a series of five long-playing records featuring instructions by Bill Casper, Jr., Dow Finsterwald, Doug Ford, Arnold Palmer and Ken Venturi under the title, "Easy Golf with Your Favorite Pro." With each album there is a book of instructions and 84 action photos.

BUYERS' SERVICE • P. 85

GOLF BAG TAGS

CLUB MEMBERSHIP TAGS
PUNCH BOARDS
"I-D" CLUB IDENTIFICATION
LABELS
GOLF PRO STATIONERY
CADDIE & WAITERS BADGES
GOLF CLUB DISPLAY FIXTURES
"CLUB CADDIE" CARRIERS
GOLF COURSE SIGNS

IRVIN E. SCHLOSS

MILLER GOLF PRINTING

2053 HARVARD AVE., DUNEDIN, FLA
SEND FOR CATALOGUE

1914

FULNAME

1959

Original Ball Marker

The rolling die does it!

3 TYPE SIZES

Small — Medium — Large

Box 178

Cincinnati 6, Ohio



**GOLF
COURSE
CONSTRUCTION**

Golf Course Architects

25 years' experience

R. Albert Anderson

6300 Gulf of Mexico Drive, Longboat Key, Fla.

3814 Washington Ave., Racine, Wis.

ALFRED H. TULL

Golf Course Architect

35 White Street
New York 13, N. Y.

ATTENTION

Driving Range Operators and Distributors. We specialize in rebuilding golf balls with strictly new materials. Satisfaction guaranteed.

WAYNE GOLF BALL CO.

**31117 Little Mack Ave.
Roseville, Michigan**

J. PRESS MAXWELL

Golf Course Architect

Member:

American Society of Golf Course Architects

Design

Construction

3855 WALNUT HILL LANE

DALLAS, TEXAS

Tel. FL 2-8889



Grandma, mother and daughter are shown in typical American woman golf attire at the U.S. National Exhibition show in Moscow. Shorts, skirt and kiltie showed the Russians that there is no lack of variety in our golf fashions. Shoes worn by each of the models were supplied by Foot Joy, made by Brockton Footwear Sales, Inc., Brockton, Mass.

**Spalding Lineup for 1960
Reviewed at Sales Meeting**

Sales reps from throughout the U.S. got a preview of the 1960 Spalding pro golf line at the annual sales meeting held in Chicopee, Mass. Featured were Top-Flite and the new Master Model Gene Littler clubs. Harold Cross, pro golf sales dir., said that sales of the new Distance Dot had greatly exceeded expectations and that deliveries are on an allocation basis. The 1960 clubs will have exclusive Spalding shafts in registered grades up and down the line and are the result of intensive research by the company. Also featured in 1960 will be a new lightweight wedge and sand club and four new Cash-In putter models.

DAVID W. KENT & CO. GOLF COURSE ARCHITECTS

Designers, Site Engineers, Builders,
Maintenance Supervisors
for over 40 years.

Consultant Services Available to Established
Golf Courses.

8535 Melvin Ave.
NORTHRIDGE, CALIF.

Dickens 4-6020

Dickens 5-2788

WILLIAM P. BELL & SON

GOLF COURSE ARCHITECTS

Member: American Society
of Golf Course Architects

544 Sierra Vista Avenue
Pasadena, California

Sycamore 3-6944

ATLantic 7-2933

Atwood Terra-Car Now in Full Production

After five years of research, testing and limited production, the Atwood Terra-Car is in full production. Gasoline powered, it has front wheel



drive and Goodyear's Terra-Tire low pressure tires. The Terra-Tire, 16 x 15 x 6, spreads the weight of the car over a large area and doesn't damage even soft, wet turf, it is said. The car weighs 800 lbs., has rear wheel steering and hydraulic brakes with additional hillholder. The Terra-Car's running mate, the Utilicar, substitutes carrying space for maintenance materials for the golf bag space and is designed for supts. and maintenance employees. Both models are manufactured and distributed by Meisel Distributing Co., 2207 Big Bend Blvd., St. Louis 17, Mo.

Par-Mate Markets Winter Golf Glove

Par-Mate, 10 W. 33rd st., New York 1, has introduced a golf glove that is designed for cold weather play.

These extra warm gloves are made with imported cape-skin palms and back of 100 per cent wool in attractive combinations of tan and beige tweed.



Three rows of elastic give a snug fit. The winter glove, Style S-81, is available in all sizes for men and women. Par-Mate is sold in most pro shops. S-81, incidentally, is recommended for winter driving.

Form Machinery Corp.

Thomas A. Harrison and David N. Hulshouser announce formation of Penn Ridge Products, located in Lansdale, Pa. This new company is concentrating on the design and manufacturing of machinery and equipment for special applications. Tom Harrison and Dave Hulshouser are widely known throughout the turf industry. Both were formerly associated with West Point (Pa.) Products Corp. Currently in production at Penn Ridge is a Trackless Train which can transport up to 150 people.

PACKAGED SHELTER



A spacious 10' x 20' x 7' port
—built to last a lifetime!
perfect for golf courses, driving
ranges. Bolts together in
1 hr. Needs no paint or special
foundation. Satisfaction guar-
anteed. Write for brochure.

ONLY
\$198

FREIGHT PAID

KWIK-BILT, INC. BOX 6834 DALLAS, TEX

Wm. F. Mitchell Golf Course Architect

NORTH SUTTON • N. H.
P. O. Box 7 Phone: 441

NEW YORK 30 • N. Y.
520 Fifth Av. Phone: Murray Hill 2-5844

POMPANO BEACH • FLA.
P. O. Box 2004 • Phone: WEBster 3-6581

James G. Harrison

GOLF COURSE ARCHITECT

Member
American Society of Golf Course Architects

266 Harrison Road
Valley 3-3444

Turtle Creek, Pa.
Suburb of Pittsburgh

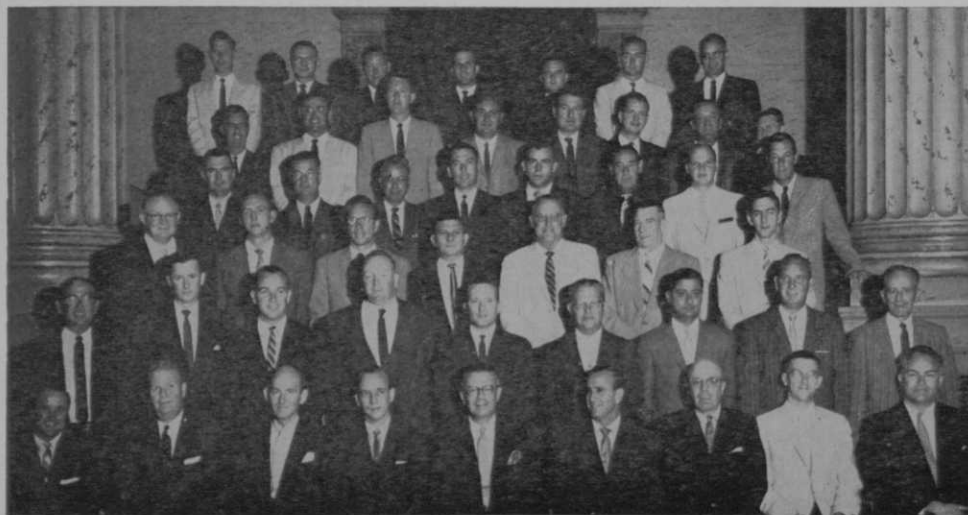
GOLF COURSE CONSTRUCTION

By CONTRACT

MADDOX CONSTRUCTION COMPANY

Phones: EXport 7-6600
Hickory 2-2411

Rankin, Illinois
Danville, Illinois



Soaring '60s Hold Great Promise

MacGregor salesmen, company officials and representatives of Brunswick International gathered in Cincinnati, Aug. 3-5, for MacGregor's annual sales meeting. In the photo are newly appointed MacGregor sales reps, Lou Fabian and Bud Burkley. Fabian works the Western Pa. territory and Burkley, the Indiana territory. "The shape of things to come in the Soaring 60s" was the theme of the sales meeting.

William F. Gordon

and

David W. Gordon

Golf Course Architects

Doylestown, Pennsylvania

Fillmore 8-4243

Members American Society of Golf Course Architects



DAVID GILL

Golf Course Architect

country club, resort
and municipal courses
of distinction

ST. CHARLES, ILL. phone 5883

R. A. DUMAS COMPANY, INC.

WAREHOUSE POINT, CONNECTICUT

Golf Course

IRRIGATION ENGINEERING

Design, Supervision and Consultants

Distributors of:

Johns-Manville Transite

Buckner Valves and Sprinklers

Ames Portable Aluminum Pipe

Midland, Myers & Marlow Pumps

Aqua-Dial Automatic Systems

NATIONAL 3-3529, 3-0368



ROBERT BRUCE HARRIS

Golf Course Architect

MEMBER AMERICAN SOCIETY OF GOLF COURSE ARCHITECTS

664 N. MICHIGAN AVENUE CHICAGO 11 • ILL.
WHitehall 4-6530

Nurseryman Tells How Aqua Gro Helps in Stock Propagation

An article in a national nursery magazine tells how the propagator of the Andorra Nurseries, Conshohocken, Pa., treats 100 per cent of his stock with Aqua Gro, giving it freer penetration and improved soil mixture content. Use of low tension Aqua Gro, the article points out, increases availability of water and nutrients and reduces the necessity for watering from three times a week to two. Other advantages cited: Use of the non-ionic wetting agent helps to keep azaleas from turning yellow, has reduced wilt considerably, stepped up budding time and gives immediate and thorough wetting after being applied to soil that is in bone-dry condition. Aqua-Gro is a product of the Aquatrols Corp. of America, 730 Lancaster ave., Bryn Mawr, Pa.

Aeri-Dryers Mop Up Quicker Than Philly Pitchers

When heavy rain followed by flooding conditions threatened to cause cancellation of a recent Philadelphia-San Francisco night baseball game at Connie Mack Stadium in Philly, two Aeri-Dryers, made by West Point (Pa.) Products Corp., were rushed in to prepare the field for the game. An afternoon's work resulted in everything being mopped up so that 22,000 people could see the game that evening.



A 'Hole-in-1' money clip (right) will be sent free to anyone getting an ace while playing a Brass Ram ball, which has a nylon center. Hole-in-1 information should be mailed to Brass Ram Corp. 805 S. Salzburg, Bay City, Mich.

Do-Ma Address Corrected

It was erroneously stated in August *Golfdom* (page 87) that Do-Ma Enterprises, Inc., is located at 1458 S. Wabash ave., Chicago 5. This address should have read 1458 S. Michigan ave.

Do-Ma markets an interesting practice game that can be played inside or outdoors. It consists of two gauges that measure distance and direction of fairway shots and putts. A string attached to the unit holds the ball. With the set are carpet, tee, ruler and protractor.

BOB BALDOCK
GOLF COURSE
Architect
1505 Blackstone
FRESNO, CALIFORNIA

ROBERT TRENT JONES

Members
American Society of Golf Course Architects

*Golf Course
Architect*

20 Vesey Street
Tel: Beekman 3-1023
NEW YORK, N. Y.