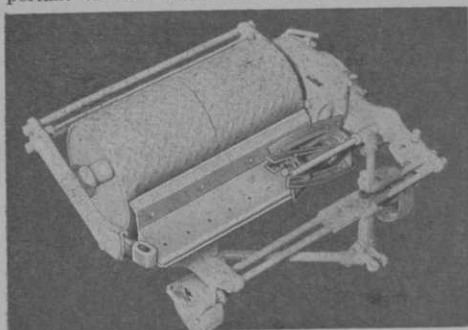


New Roseman Mower

The new Roseman mower combines a high speed cutting reel with a positive means for disbursement of clippings. This is particularly important on dew laden or watered fairways and



where Bermuda, bent or poa annua are predominant. With the new Roseman Hi-Speed Reel, together with a new grass deflector and scraper arrangement, grass clippings are evenly distributed, eliminating bunching, dropping and windrowing, even under the wettest of turf conditions. Early morning mowing and even night mowing, with a beautiful finished cut, can now be accomplished with the new mower design, according to the manufacturer. Complete details on the new Roseman Hi-Speed Reel Mark IV Hollow Roller Drive mower may be had by writing Roseman, 2608 Ridge rd., Evanston, Ill.

Plastic Gimmick Sets Tee at Right Height

Acra-Hite T-Driver, a small plastic container holding a wooden tee at the height the user intends to have the ball teed up, is being made by the inventor, Robert G. McKee of Copar, 604 W. Lake st., Chicago 6. The peg is placed in the T-Driver so it may be pushed into the ground to depth of $\frac{1}{8}$, $\frac{1}{4}$ or $\frac{3}{8}$ ins.

Walker's New Car Plans

Walker Mfg. Co., Fowler, Kans., manufacturer of the Walker Executive golf car, is planning a lower priced utility type car body and golf car



trailer for the future, according to Max Walker, owner and mgr.

The Executive will carry up to four bags and can be operated on dual controls. It is of steel construction, electrically welded and the body can be tilted upward for quick and easy inspection and maintenance. Walker spent more than a year in a developing the car. Production was limited in 1958 but the firm found it necessary to increase output this year, moving into a new building (see photo) and adding employees.

October, 1959

STOP BALL MARKS ON GREENS

with this

DIVOT FIXER

Many clubs are successfully using this easy, effective way of eliminating ugly ball marks from greens. They provide their players with inexpensive Divot Fixers and have from 200 to 400 golfers helping maintain their greens. Repeat orders prove that this little tool has an actively useful place on all courses.

Prices: for nickel plated, plain or imprinted as shown—
F.O.B. Des Moines, Ia.:

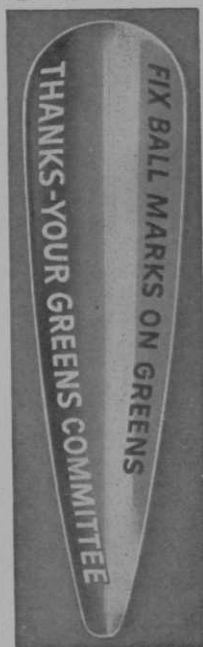
1000—\$65 500—\$35
250—\$20

Ten percent of order in small individual envelopes with printed directions. Extra envelopes one cent each.

Ten dollars extra for imprinting name of firm or club. Limit of 25 letters and spaces for upper; 29 for lower line.

WOODSIDE GOLF & PARK SUPPLY CO.

Des Moines 13, Iowa



ACTUAL SIZE

No Gouges No Puddles



protect
greens and
tees with

PUNCH-LOK HOSE CLAMPS

Punch-Lok Hose Clamps leave a smooth, absolutely leakproof connection. Easy to put on. Last the life of the hose. Write for literature and nearest distributor.

No Snag!
No Leak!

PUNCH-LOK
Company

8943

Dept. R, 321 N. Justine St., Chicago 7, Ill.

USED GOLF BALLS WANTED

We will buy any type of used golf balls no matter what the condition. We pay top prices at all times due to our year round market.

1. We pay all freight charges.
2. We supply containers for shipping and addressed shipping tags. This makes the bothersome job of packing and shipping as easy as possible.
3. We have men traveling most of the country, so if you would rather have us make you a cash on the spot offer, and pick up the balls, just let us know that you are interested. Our representative will call on you and if his offer meets with your approval he will complete the transaction immediately.

Please write for prices paid for used golf balls and complete shipping instructions. Please let us know how many golf balls you have to sell when writing, so that we will know how many containers to send.

GUNDERSON GOLF BALL CO.

3114 Scanlan Ave.

Ph: JU 2-7332

Lake Worth, Florida

USED GOLF BALLS IS OUR BUSINESS — BUY, SELL OR REFINISH

Hogan Redesigns Irons

Shown in the photo is Ben Hogan's Power Thrust iron (for men). Women's irons are known by the same name. The 1960 model Hogan clubs are completely redesigned. Weight has been shifted from the toe and along the top of the blade to the club's center to give, it is said, greater power at impact. The new sole is designed to reduce drag with 25 per cent less area in contact with the turf. The weight shift also is devised to eliminate toe flutter (tendency of conventional heavy-toed clubs to open and close or vibrate on the downswing).



Crofton "Bug" Designed for Course Utility Use

Crofton Marine Engine Co., San Diego, Calif., has started production of a small utility car called the "Bug." The new vehicle has the general appearance of a half-size jeep and weighs only 1,100 lbs. It has a wheelbase of 63 ins., over-all length of 111 ins. and is powered by a 35 hp overhead cam, liquid-cooled, 4 cylinder



K & M Pipe Brochure

Keasbey & Mattison Co., Ambler, Pa., has just released an 8-page, two color brochure describing its asbestos-cement underground irrigation pipe. Special emphasis is put on the K & M Fluid-Tite coupling which is easy to assemble and is said to provide a permanently tight seal. The brochure, AP-25, can be obtained upon writing to the manufacturer.

gas engine. The engine is a descendant of the original Crosley power plant and has been "polished" for use in the "Bug." There is 3-speed transmission, clutch and brakes operate hydraulically and the car is suspended on leaf springs. The vehicle is designed for off-highway use such as on golf courses.

SPIKE RESISTANT MAGIC FLUFF* FLOOR COVERING

Excellent in Club, Locker and Bar Rooms, Pro Shops, Hallways and Entrances. Rich oriental color blend matches any decor. Orders custom made to fit the area.

VACUUM CLEAN.

Door Mat size sample 18" x 30" \$5.00 Postpaid.

New MAGIC FLUFF* TEE MATS —*Protected by Patent #2338828.

H. M. WISE — 212 Helen Ave., Mansfield, Ohio

Dist. Ashland Rubber Door Mat Co.

Ashland, O.



Possum Run Golf Club
Mansfield, Ohio

LAWN MOWER STATIONARY BLADES



CUT COSTS — as well as grass with JONES Blades. Hundreds of Golf Courses in every section of the country are saving thousands of dollars by buying direct from the manufacturer.

30" Heavy Duty Gang Mower Blades \$5.04

Putting Green Mower Blades \$3.69

**MAY WE QUOTE
ON YOUR BLADE
REQUIREMENTS?**

**JONES MOWER AND
EQUIPMENT CO.**
Grasslyn Ave., Havertown, Pa.

**FINEST QUALITY.
YOUR SATISFACTION
IS GUARANTEED.**

Raelco Sprayer Handles Several Types of Jobs

Raelco Sprayer, made by Courtney Enterprise, 1353 Highwood bld., Pontiac, Mich., can be used for several types of spraying jobs including



weed killing, fertilizing and spraying against insects. Hinged spraying arms permit the Raelco to be stored in a small space. It operates on low pressure and is coated to resist most acids. Overall armspread is 7 ft; the sprayer weighs only 30 lbs. when empty; capacity is 15 lbs.; and the tank can be pressurized by either foot pump or portable compressor. The sprayer will cover one acre in 30 minutes.

Regulation Ball Used With Returno Practice Set

Returno, a new practice device, has a regulation golf ball attached to 15 ft. of patented

"stabilized" cord. It is constructed to return the ball to the golfer after it has been hit 30 to 35



ft. The unit has 170 lbs. of jerk tension and is anchored to the ground by two steel spikes pushed through a block. There is a double safety device at both ball and block. Available through pro shops, Returno is packaged for window display. It is made by Returno Golf Co., 31 W. 47th st., New York 36.

BUYERS' SERVICE • P. 127

NIMISILA

NIMISILA Greens are playable weeks ahead of seeded ones. How much is a Month's play worth?

BENT GRASS

**BILL LYONS
TURFGRASS FARMS
1843 Glenmount Ave.
Akron 19, Ohio**



TROUBLE FREE! RENTAL CART SERVICE

We furnish you all you need on rental share basis. No investment for you! We deliver and service carts regularly and keep them in good repair—FREE. Clubs not held responsible for damages, theft or breakage.

CADDY-ROLL RENTAL SERVICE

Three Rivers, Michigan

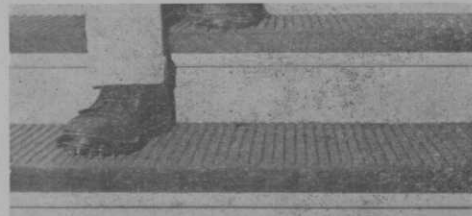


Lloyd Mangrum is shown with Golfcraft's Xmas gift putter package which consists of a Glasshaft putter and Golfcraft Staff ball. Part of the package serves as a putting cup. The complete package sells for the price of the putter and ball alone. Golfcraft also has a gift ball pack of a doz. Staffs plus a colorful desk pen set and Christmas card.

An A. G. Spalding & Bros. Hole-in-One trophy was recently presented to Stuart McLees, Brookfield, Ill., for the longest ace of the season scored with either a Spalding ball or club. McLees scored on the 289 yard 15th hole at York GC, Hinsdale, Ill.

Melflex Develops Hard-Wear Tread for Steps

A new type molded rubber step tread has been developed by Melflex Products Co., Akron, O., for surfacing steps in clubhouses and other places where traffic is extremely heavy. Called "Kleet-Proof", it is compounded of nylon and rayon cords, reclaimed from tires, and combined with rubber and molded into a ribbed tread pattern. It is 1/4 in. thick with a grooved surface for quick



drainage and has a 1-in. deep nose that covers the approach to the step with a protective cushion. It has been tested, according to Melflex, under the most rugged abrasive conditions and has shown great wear resistance.

Jim Butz recently joined the staff of Golfcraft, Inc., as an assistant to Mark Cox, vp and sales mgr. Butz is located at the company's Chicago office, 7059 W. Addison st.

GOOD ROADS MULCH-VAC SWEEPER

ideal
for
golf
courses

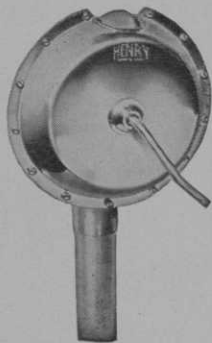


....Eliminates Leaf Removal
and Disposal!

Towed-Type. Cleans 6' 5" width at one pass—25 to 30 acres per 8 hour day. Picks up leaves by vacuum suction, thoroughly mulches and spreads them evenly over the ground. Leaf mulch disintegrates to a natural fertilizer. Does the job in hours that takes many men days.

Also available: Small self-propelled "walkie" model for obstructed areas or club-house grounds. For further information write:

GOOD ROADS MACHINERY CORPORATION • MINERVA, OHIO



A Proven Golf Ball Washer for . . .

The **HENRY GOLF BALL WASHER**

Used On Leading Golf Courses Throughout The World

You get more ball washer for the money with The Henry. It costs less initially. Course Supts. will find it requires minimum upkeep. Golfers throughout the world have found that The Henry, with its rubber squeegee and gasket, cleans their balls faster and more efficiently.

DEALERS IN ALL PRINCIPAL CITIES

only
\$14.75

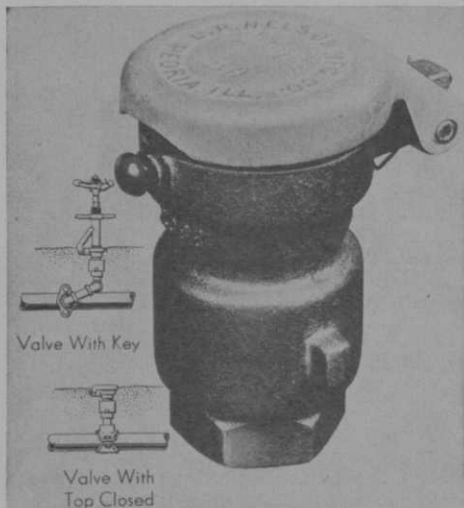
Prices F.O.B.
Waukesha, Wis.

A. C. Schendel,
Distributor

Rt. 5 Box 92,
Waukesha, Wis.

Rainy Sprinkler Valve Meets Quick-Coupling Demand

A new, quick-coupling turf valve, the Nelson Model 30 midget valve, made of highest grade



brass, has been developed to meet the new demand for handier valve units for underground

sprinkling systems. The Nelson valves are placed according to turf requirements, flush with the surface and below mower blades. Heads and keys are removed after each sprinkling, leaving the ground free of obstruction. The Model 30 has capacity of 10 gpm and 3/4 in. pipe inlet connection. Threaded key design gives uniform opening and closure, eliminating water hammer and making the Model 30 ideal for use with plastic pipe. Full details can be obtained from Rainy Sprinkler Sales, 609 W. Lake st., Peoria, Ill., or National Rainbird Sales & Engineering Corp., PO Box 547, Azusa, Calif.

Sunstate Markets Arnold Palmer Slacks and Walk Shorts

Sunstate Slacks, Inc., 900 N. Howard, Tampa, Fla., is marketing Arnold Palmer slacks and walk shorts which have what is called the exclusive "floating waistband." Both come in a wide range of colors and have a half-belt with concealed elastic. Rubber gripper pads keep the wearer's shirt down. Slacks and shorts are made of acrilan and viscose rayon, can be washed and worn and seldom need pressing. Pros can obtain swatch book and prices from jobbers or information about the Palmer models from Sunstate.

Buyers' Service • P. 127

SAVE CLUB HOUSE FLOORS

WITH SPIKE-RESISTANT PNEU-MAT RUNNERS

Protect your floors from spike holes with rugged Pneu-Mat Runners. Absolutely spike-resistant, they provide a comfortable walking surface — improve the appearance of your club house.

Woven of rubber-impregnated fabric, Pneu-Mat Runners are tougher than rubber runners. Reversible for double wear.

Money Back Trial Offer: Order a trial section. Test it on an area which gets especially hard wear. Money back if not satisfied.

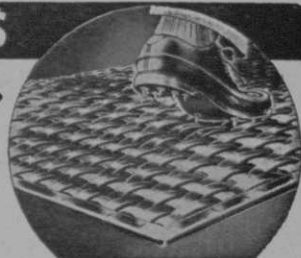
STANDARD WIDTHS

20" - 24" - 30"
36" - 42" - 48"

Trial Section
24" x 60"

\$12.50 postpaid

Write today for illustrated folder



SUPERIOR RUBBER MFG. CO., INC. • 145 Woodland Ave., Westwood, N. J.

AMERICA'S FINEST GOLF PRACTICE NET

made with United States Rubber Company's shock absorbent ENSOLITE

—a tough expanded cellular plastic pad sewed to heavy duck and designed to withstand the terrific impact of high velocity drives. Prevents ball rebound.

- Easy to set up — INSIDE OR OUTSIDE
 - Back drop 8' wide 9' high
 - Ensolite pad 4' x 6'
 - Side nets 8' x 9'
-\$98.00 F.O.B. Factory
8' x 9' back drop and Ensolite Pad.

Please enclose check, money order or purchase order.

SOUTH BEND PRODUCTS SALES

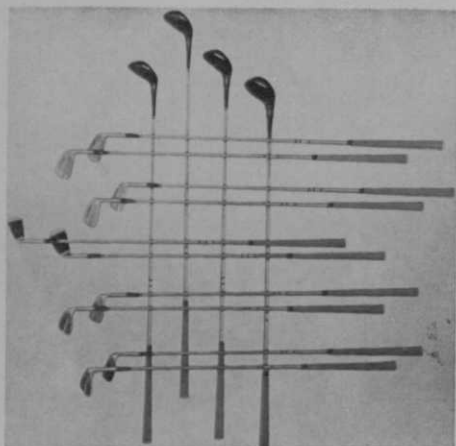
1422½ Mishawaka Ave. South Bend, Indiana



Leading Country Clubs
Use South Bend Golf Practice Nets

First Flight Offers Jimmy Demaret Personalized Clubs

Jimmy Demaret woods and irons, manufactured by First Flight Co., Chattanooga 5, Tenn.,



are said to be personalized to exact length, swing weight, size and type of grip, shaft flexi-



O. R. Lawson (l) and J. W. Reihman, Jacobsen Manufacturing Co. sales dept., examine copy of brochure, "This Is Jacobsen," which describes the company's growth in the power mower field. The 16-page booklet is being distributed to all Jacobsen dealers.

bility and face. Every club, it is claimed, is made to swing exactly alike, although heavier woods can be furnished if desired. Ladies' clubs range from the extremely light A bracket and men's clubs are supplied as heavy as the E bracket. Woods are in persimmon and irons are forged of mild English steel. Irons are chrome plated direct to the steel in three steps and faces are sandblasted for lasting finish. Fitting charts are supplied for pros' convenience.

James G. Harrison

GOLF COURSE ARCHITECT

Member
American Society of Golf Course Architects

266 Harrison Road
Valley 3-3444

Turtle Creek, Pa.
Suburb of Pittsburgh

BOB BALDOCK
GOLF COURSE
Architect
1505 Blackstone
FRESNO, CALIFORNIA

ROBERT TRENT JONES

Member:
American Society of Golf Course Architects

*Golf Course
Architect*

20 Vesey Street

Tel: Beekman 3-1023
NEW YORK, N. Y.



ROBERT BRUCE HARRIS

Golf Course Architect

MEMBER AMERICAN SOCIETY OF GOLF COURSE ARCHITECTS

664 N. MICHIGAN AVENUE CHICAGO 11 • ILL.
Whitehall 4-6530

Costello Retires; Tabbert, Bunc Named Treasurer, Secy. at Jacobsen

Retirement of James F. Costello as treas. and secy. and election of Frederick C. Tabbert as treas. were recently announced by Oscar T. Jacobsen, board chmn. at a meeting of the directors of the Jacobsen Mfg. Co., Racine, Wis.



Tabbert



Bunck



Costello

Victor E. Bunck has been named secy. of the company and also will carry on as the assistant treasurer.

Costello joined Jacobsen in 1927 and had been an officer and director for 29 years. Tabbert recently came to Jacobsen from Harnischfeger Corp., Milwaukee, as corporate controller and at one time managed his own accounting firm. Bunck is a 32-year veteran at Jacobsen. He was named asst. treas. in 1949 and was elected to the board in 1953.



Flame ceramic facing again will be a feature of the 1960 MacGregor iron line. Club has new "Pro-Pel Action" shaft, four different swing weights are available and the "Firma-Grip" has built-in tackiness. Tourney Eye-O-Matic woods have aluminum buttons in the clubface that is said to act like a firing pin and a new method of lead filling provides more even weight distribution. Woods have "Pro-Pel Action," four swing weights and "Firma-Grip."

Offer Soil Test Kit with Olympia Spreaders

Ezee Flow, div. of Avco Distributing Corp., 3428 N. Harlem ave., Chicago, Ill., is making available with its Olympia line of spreaders a soil test kit at practically a giveaway price. The test kit is made by the Sudbury Laboratory,

R. A. DUMAS COMPANY, INC.
WAREHOUSE POINT, CONNECTICUT

**Golf Course
IRRIGATION ENGINEERING**

Design, Supervision and Consultants

Distributors of:

Johns-Manville Transite

Buckner Valves and Sprinklers

Ames Portable Aluminum Pipe

Midland, Myers & Marlow Pumps

Aqua-Dial Automatic Systems

NATIONAL 3-4471, 3-0368

WILLIAM P. BELL & SON

GOLF COURSE ARCHITECTS

Member: American Society
of Golf Course Architects

544 Sierra Vista Avenue
Pasadena, California

Sycamore 3-6944

ATLantic 7-2933

Wm. F. Mitchell *Golf Course Architect*

NORTH SUTTON • N. H.
P. O. Box 7 Phone: 441

NEW YORK 36 • N. Y.
520 Fifth Av. Phone: Murray Hill 2-5844

POMPANO BEACH • FLA.
P. O. Box 2004 • Phone: WEbster 3-9343

South Sudbury, Mass., and can be used by a person who is not trained in soil chemistry to test for nitrogen, phosphorus and potash content as well as determine acidity. With information gained from testing it makes the job of



prescribing fertilizer easier. According to Sudbury, use of the kit has become very popular among farmers. Ezee Flow has been distributing or offering the kit for the last year and the promotion has been extremely successful, accounting partly for the fact that sales of Olympia spreaders have nearly doubled since 1958.



DAVID GILL *Golf Course Architect*

country club, resort
and municipal courses
of distinction

ST. CHARLES, ILL. phone 5883

Barger New Wilson Ad Manager



Harry D. Barger has been named advertising mgr. of Wilson Sporting Goods Co. He also will head the advertising and sales promotion div. of Wilson & Co., Inc. Barger was associated with Baker, Tilden, Bolgard & Barger advertising agency for 11 years before going to Wilson. He is a graduate of the University of Missouri.

Kusiak Appointed Manager of Spalding's Custom Club Dept.

Ted Kusiak has been named mgr. of the Custom Built club dept. of A. G. Spalding & Bros., Inc., Chicopee, Mass. In his new position, Kusiak is in charge of all special clubs and club repair work. He has been with Spalding for 22 years and was assistant to the late Don Tait, former mgr. of the Custom Built dept. Kusiak has helped design and manufacture special clubs for many notables as well as professionals who are members of Spalding's advisory staff. An excellent player himself, Ted shoots in the 70s.



DAVID W. KENT & CO. GOLF COURSE ARCHITECTS

Designers, Site Engineers, Builders,
Maintenance Supervisors
for over 40 years.

Consultant Services Available to Established
Golf Courses.

8535 Melvin Ave.
NORTHBRIDGE, CALIF.

Dickens 4-6020

Dickens 5-2788

ALFRED H. TULL

Golf Course Architect

35 White Street
New York 13, N. Y.

GOLF COURSE CONSTRUCTION COMPANY

R. ALBERT ANDERSON

**GOLF COURSE
ARCHITECTS
BUILDERS**

25 Years' Experience

Our organization is in a position to finance a portion of new golf course design and construction — in one package.

The responsive cooperation of golf course committees, superintendents and professionals of the numerous courses we have constructed speaks for the advantages of our project planning and procedure.

As experienced specialists we keep informed on golf course construction and turf requirements in all parts of the country.

- Modern construction
- Maintenance ease and economy
- Tees — up to 240 ft. long; dual tees; L-shaped tees
- Greens— gently rolling with 7500 sq. ft. of putting surface; elevated between 4 ft. and 9 ft.; properly drained.

R. Albert Anderson

6300 Gulf of Mexico Drive, Longboat Key, Fla.
3814 Washington Ave., Racine, Wisc.



First Flight (Chattanooga 5, Tenn.) is said to have a perfectly round steel center placed exactly in the center of the ball. As ball rolls or spins in flight, concentrated center weight is claimed to act as a stabilizer. Sold only in pro shops, balls are now being packaged in attractive Christmas wrap.

Put Players to Work with Divot Fixers

Woodside Golf and Park Supply Co., Des Moines, Iowa, produces a divot fixer that can save a lot of wear and tear on greens and the maintenance staff. If players are provided with them, most will cooperate in repairing ball marks. Names, clubs, etc. can be imprinted on the divot fixers. Details can be obtained from Woodside.

Gets Brunswick Scholarship

William R. Smeal, son of an employee of The MacGregor Co., Cincinnati, has been awarded one of five Brunswick Foundation Scholarships. His father, Bill, Sr., is a foreman in MacGregor's golf div. Young Smeal, a junior at the University of Cincinnati, is majoring in mechanical engineering. The scholarship is worth \$500.

Victor-PGA Car Tieup

Victor Electric-Car Div., Victor Adding Machine Co., Chicago 18, is producing the PGA Electric-Car. The PGA vehicle is said to have features not incorporated in the regular Victor Electric-Car. It is powered by 36 volts from six batteries. The new car is being handled by National PGA Distributors, Newark, O.

JOSEPH S. FINGER

GOLF COURSE ARCHITECT-CONSULTING ENGINEER

Design • Construction • Watering Systems
Remodeling

408 N. Ave. A Bellaire, Texas

Phone: Houston — MO 4-0039

Registered Professional Engineer
State of Texas 5708

William F. Gordon

and

David W. Gordon

Golf Course Architects

Doylestown, Pennsylvania

Fillmore 8-4243

Members American Society of Golf Course Architects

WM. H. TUCKER, JR.

Golf Course Architect

4515 Santo Tomas Dr. — Los Angeles 8, Calif.

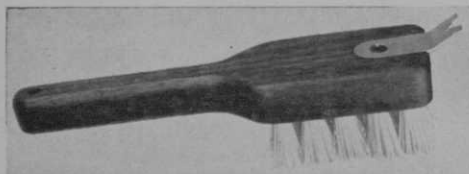
now building:

Ontario Municipal Golf Course, Ontario, Calif.

Carlton Hills Country Club, Santee, Calif.

**Pacific Specialties Markets
Two-in-One Shoe Brush**

The "Sammy Golf Shoe Cleaner," made by Pacific Specialties Co., 230 Termino ave., Long Beach, Calif., is a two-in-one cleaner with metal



scraper for removing mud and a stiff plastic bristle brush for dressing up shoes. The handle is of solid walnut. The brush combination comes packed 12 in an attractive counter display box. For information, write Sam Snow at the above address.

Automatic Water Shutoff

New Richdel Watertimer automatically shuts off water running through a hose, preventing flooding, overflowing, backwashing, etc. It can be set for practically any interval up to an hour by moving the hands on the clock. The Watertimer is made of corrosion-resistant nylon plastic and stainless steel. There is a one-year guarantee on the product. Watertimer is made by Richdel, Inc., 641 Sonora ave., Glendale, Calif.

**Par-Mate Recommends
Hahn, Armour Gloves**

Jack D. Levine, 10 W. 33rd st., New York suggests the Paul Hahn Par-Mate glove as a thoughtful Christmas gift item. It is made of imported capeskin with 10 rows of elastic back of hand to give a taut, comfortable fit. The glove is styled for men and women in a full range of color. Another suggested gift item is the Tommy Armour glove with exclusive club hugger inset across the palm. The thumb on this capeskin glove is reinforced for extra long wear. The glove is made in all sizes for men and women.

Spalding Net Up

Nine months net earning of A. G. Spalding & Bros., Inc., for the period ending July 31, were \$813,000 or \$1.05 a share as compared to \$690,000 and 89 cents for the comparable period in 1958. Profits before taxes this year were \$1,716,000. Quarterly earnings, May-July, 1959, were 65 cents a share as compared with 44 cents the previous year. Edwin L. Parker, Spalding pres., predicts improvement in all product lines for 1960 and says that every effort will be made to hold the price line in the coming year.

BUYERS' SERVICE • P. 127

J. PRESS MAXWELL

Golf Course Architect

Member:

American Society of Golf Course Architects

Design

Construction

3855 WALNUT HILL LANE

DALLAS, TEXAS

Tel. FL 2-8889

GOLF COURSE CONSTRUCTION

By CONTRACT

MADDOX CONSTRUCTION COMPANY

Phones: EXport 7-6600

Hickory 2-2411

Rankin, Illinois

Danville, Illinois

PACKAGED SHELTER



100%
STEEL

A spacious 10' x 20' x 7' port
—built to last a lifetime!
Perfect for golf courses, driving
ranges. Bolts together in
1 hr. Needs no paint or special
foundation. Satisfaction guar-
anteed. Write for brochure.

SPARKLING
ALUMINUM FINISH

ONLY
\$198
FREIGHT PAID

KWIK-BILT, INC. BOX 6834 DALLAS, TEX

Porter Elected Board Chairman at K & M

Robert E. Porter has been elected chmn. of the board of Keasbey & Mattison Co., Amblor, Pa. He will continue to serve as pres. of the firm which produces irrigation pipe among other things. Porter came to K & M in 1955, was named executive vp in 1956 and was elected pres. a year later. Previously he was with Ford Instrument Co. and Cleveland Graphite Bronze Co. Porter currently is directing K & M's long range reorganization and expansion program. He is a graduate of the Naval Academy and M.I.T. and served as a Marine pilot in World War II.



Wm. Joyce Catalog Carries Men, Women Styles

The 1960 catalog of Bowen, Inc., 81 Masonic Ct., Pasadena, Calif., manufacturer of Wm. Joyce golf shoes, is off the press. The 16-page, four color catalog is beautifully contrived with photos of the various models being stunningly set off in floating arrangements against appropriate backgrounds. Half of the catalog is de-

ATTENTION

Driving Range Operators and Distributors. We specialize in rebuilding golf balls with strictly new materials. Satisfaction guaranteed.

WAYNE GOLF BALL CO.

31117 Little Mack Ave.
Roseville, Michigan

voted to men's fashions and the other half to women's. Golf shoes as well as shoes for casual wear are shown. Bowen uses imported and domestic leathers in Wm. Joyce shoes which, it is said, are glove soft but strong enough to take inclement weather and hard wear.

Kangaroo Leather Bag

MacGregor's new Kangaroo Leather golf bag heads the company's exclusive Sweep Flare design series for 1960. Made of top-grain Kangaroo hide it comes in Aussie red with silver lurex welt or Bucaneer black with gold lurex welt. Features include a step-down top collar, 9-in. round Dee-style opening, full length divider between wood and iron sections and divider straps between long, mid and short irons. Bag is nylon stitched, has extra heavy steel stay reinforcements and extra steel rings at top and bottom. Sling is snap-on type. There are jumbo size clothing and ball pockets which have heavy duty zippers.



Look at Wittek's record before
you turn in your

USED GOLF BALLS

For Cash or in rebuilt balls

27 years of reliable grading, rebuilding, rebuilt personalized; and payment has satisfied 2,300 Range, Course, Par 3 and Miniature customers and made Wittek the Used Golf Ball clearing house.

Ask for details and shipping tags.

Wittek Golf Range Supply Co., Inc.

5128 W. North Av., Chicago 39, Ill.

QUALITY PUTTERS

CUSTOM MADE

Design —

Workmanship —

Materials —

VELVET TOUCH PUTTERS

PUTTERS UNLIMITED

By:

FRED MATZIE GOLF CO.

2715 Washington Bl., Venice, Calif.

GOLF RANGES

PAR THREE

MINIATURE COURSES

*We Have a Complete Line of
Equipment.*

**EASTERN GOLF CO.,
2537 Boston Road,
Dept. A, Bronx 67, N. Y.**



1914

FULNAME

1959

Original Ball Marker

The rolling die does it!

3 TYPE SIZES

Small — Medium — Large

Box 178

Cincinnati 6, Ohio

**Big Sales, Customer Delegations
at Jacobsen Meetings**

More than 50 members of the sales organization recently attended four meetings of Jacobsen Manufacturing Co., Racine, Wis., along with 316 major customers from Canada, Switzerland



1960 Jacobsen 26-in. Javelin and the 24-in. Ram.

and every state in the U. S. As the new 1960 line was introduced it became evident that the firm could supply power mowers from 18 ins. to 21 ft. Six new mower and edger models were demonstrated and seven others with minor changes also were shown. Complete large-area Worthington mowing equipment also was brought to Racine for the meetings. Sales promotion literature, including the 1960 catalog, posters and a brochure were presented along with a 20-minute sound, slide film "This Is Jacobsen," which is for dealer showings.

Anderson Writes Car Traffic Booklet

R. Albert Anderson, architect of Longboat Key, Fla., and Racine, Wis., is writing a booklet for Cushman Motor Works, Inc., Lincoln, Neb., manufacturers of the Cushman Electric Gopher, on the proper routing of cars to keep courses in better condition. It is being written with an eye to improving traffic patterns at existing courses and those under construction.

**Jo Ann Prentice with Kroydon;
Reynolds, Whitworth Join Hagen**

Newest addition to the Kroydon advisory staff is Jo Ann Prentice, one of the regulars on the Ladies PGA tour. She has been a professional since 1956. JoAnn was a quarter-finalist in the 1954 Women's Amateur and had her best professional season in 1958. Kroydon Corp's plant and offices are located in Melrose Park, Ill.

Mary Ann Reynolds and Kathy Ann Whitworth, newcomers to the Ladies PGA tour, have been added to the Walter Hagen advisory staff. Mary Ann, who attended the University of Georgia, won several Georgia amateur titles and reached the quarter finals of the 1958 North-South Amateur before turning pro. Miss Whitworth, just turned 20, is the youngest girl ever to play the women's circuit. She won the New Mexico women's amateur title in 1958-59.

Kill WATER WEEDS!

Water hazards and lakes now may be cleaned of all rooted aquatic weeds, Lily, cattail, milfoil and many other aquatic weeds are easily killed with one application of R-H GRANULAR WEED RHAP. It is easily applied — will not harm fish or animals. This inexpensive application usually lasts from 18 to 36 months. Write for further information or ask your dealer.

REASOR-HILL CORPORATION

BOX 36GC, JACKSONVILLE, ARKANSAS

LOCKER NAMEPLATES

Directory and Bulletin Boards



Write for sample and prices

KIRSCH CARD SERVICE

BOX 426X, ELMHURST, ILL.

RALPH PLUMMER

GOLF COURSE ARCHITECT

Member, American Society
of Golf Course Architects

10330 Kilkinney • Dallas, Texas
Davis 7-3136

FORT WORTH HOUSTON SAN ANTONIO
EDison 5-5478 JACKSON 8-5311 CAPitol 5-1594

PENHURST DEVELOPMENT CO.

Incorporated

GOLF COURSE DESIGN AND CONSTRUCTION

35 Years Experience

JAMES G. HARRISON
Architect

FRED GARBIN
Agronomist

JOHN McANINCH
Gen'l. Supt.

266 Harrison Road • Turtle Creek, Penna

Phone: VALley 3-3444



At annual summer sales meeting of Ernie Sabayrac, Inc., salesmen and suppliers, held recently in Miami Spring Villas (Fla.), were the following: (1st row, l to r) Sam Baker, Anne Wilson, Dick Tarlow, Mollie Russell, Gene Saunders, Ernie Sabayrac, C. L. Wilcox, Ben Stone, Ben Hogan, E. P. Rankin. (2nd row) Jack Carnahan, Bill Foos, Jack Murphy, Bud Werring, Dick Bullock, Hal Whittington, Joe Aubuchon, John Hainje, Sam Patrick, Les DeFino, Barney Holliday, Ted Cassidy, Bob Bonamy, Jack Owens. (3rd row) Ira Katz, Bob Haggerty, Fred Armstrong, Tom Martin, Max Baker, Lyne Price, John Burt, Don Bodner, Owen Chapman, Morgan Borofsky. Sabayrac suppliers include the Ben Hogan Co., Brockton Footwear, Flip-It Hat Co. and Hartmann Luggage Co.

On Golfcraft Advisory Staff

Cynthia Jan Sullivan of Harrisburg, Pa., who recently turned pro, has joined the women's advisory staff of Golfcraft, Inc. As an amateur she was quarter-finalist in the 1958 North-South

Championship and semi-finalist in the Pennsylvania State tournament. In 1957, Cynthia won the Women's Collegiate driving championship with a 256 yd. drive. She joins Shirley Spork and Murle MacKenzie on the Golfcraft staff.

WITTEK

for the best of the latest in

RANGE - PAR 3 MINIATURE

EQUIPMENT - SUPPLIES - FIXTURES

Write for complete catalog

Wittek Golf Range Supply Co., Inc.

5128 W. North Av., Chicago 39, Ill.

Golf Score Cards

Specializing in Printing for
Clubs and Pros.

CHARGE CHECK BOOKS

HANDICAP CARDS and PANELS

BAG and GUEST TAGS

(WRITE FOR CATALOG)

VESTAL-MONROE PRINTING CO.

ESTABLISHED 1912

TELEPHONE HARRISON 7-6314

701 S. LA SALLE ST. • CHICAGO 5