

LET SAM SNEAD
HELP YOU SELL

MAGIC

PAT. APP. FOR

TARGET-TEE®

OF LIFETIME NYLON

- The greatest stroke-saving golf tee ever designed
- Endorsed by SAM SNEAD in national advertising
- Sells itself from FREE compact counter display dispenser
- 48 pkgs. of tees pre-ticketed at 39¢ pkg.
- Your investment — \$11 your profit \$7.72
- Postpaid — anywhere in U.S.A.

*Reg.



Mfd. by **TARGET TEE CO.**

2432 Hollywood Blvd., Hollywood, Fla.

1959 Amputee Tournament

The 1959 National Amputee golf tournament will be played at Savannah (Ga.) GC, Aug. 28-29, according to an announcement by Ralph Demopoulos, pres. of the sponsoring Savannah Golfers Assn. About 150 players are expected to take part in the tournament. The course is 6,105 yards long and par is 72. Earlier this year it was the site of the Amputee Southern Region tourney, won by Wally Baskovich, Clearwater, Fla., who finished as runnerup in the 1957 national.

Golf Holds Price Line

Figures developed by the National Golf Foundation and printed in a recent fact sheet, "Golf Beat," show that on a comparative basis it is cheaper to play golf today than it was 25 years ago. In 1932, people had to work 2.7 hours to earn enough money to pay weekday green fees as compared to 1.2 hours today. Weekend green fees in 1932 required 4.5 hours of work as compared to 1.7 hours today. The Foundation also points out that people today not only have more time to play but that there are more than five semi-private courses now being operated for every two in 1932.

Toro Manufacturing Introduces "Wind-Tunnel" Mower



"Wind-tunnel" mower is the way the 19-inch Toro Whirwind rotary power mower is described. Incorporating a full-circle expanding wind tunnel, said to be the most significant advance in mowers since rotaries, the machine creates a power vacuum that "freezes" grass blades upright for crisp cutting. Compressed air blows clippings and leaves through spiral chamber into a bagging attachment. Even wet grass is said to mow easily with no clogging. Chute and leaf mulcher, standard attachments, enable the Whirwind to give three-season service: spring and fall cleaning, cutting and bagging, full mulching. The discharge chute, of tough Marlex high-density polyethylene, resists abrasion and absorbs shock of vacuumed material. The one-inch crankshaft, one of the shortest in any rotary on the market, is said to be up to 300 per cent stronger than other crankshafts.

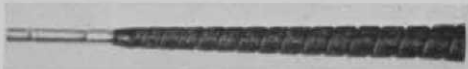
Name the Grip Competition

Pros and consumers will have the opportunity to win a trip for two to the 1960 Masters, U. S. Open or PGA Championship by naming the



newest Goodwin grip. Both the pro who sells it and the consumer who buys it and names it will win. Information regarding this contest will be available at every shop in the country. The contest will cover both replacement and new club grips.

This newly designed all black grip has tiny beads of live rubber on the surface and is said to



give positive left hand control. It helps generate more power off the tee. The "Corker" answers the demand for an all weather grip. The cork particles are embedded in a special rubber compound in such a manner that, coupled with the patented design, it permits equally good play in hot, cold, fair or wet weather.

H & B's 1959 Power Bilt Line

Hillerich and Bradby's 1959 line of Power Bilt clubs includes the features described below:

Citation Wood—Brass back-weighted medium size head finished in dark wine. Air-dried persimmon is used exclusively. Driver is available in deep or medium-shallow face. Fairway woods have medium-shallow faces. Shaft is True Temper's Pro-Fit in A, R or S flex. Buyer has choice of Cushionform leather or cork and rubber rib-guide grips.



Citation Iron — Blade is updated version of Scotch type blade, shallow at hazel, deep at toe. In stainless steel it won't rust or corrode. Back is power-weighted with two-tone bright and sand-blast face. True Temper Pro-Fit shaft in A, R or S pattern. Choice of chrome-tex leather Cushionform or white Victory Golf Pride rib lock grip.



Several Innovations in New Atwood-Terra Golf Car

Meisel Distributing Co., 2207 Big Bend Blvd., St. Louis 17, Mo., is marketing a new golf car with features that it claims are revolutionary.



Called the Atwood Terra-Car, it has Goodyear's latest innovation that is said to spread the weight of the tires over such a large area that damage, even to turf too soft to walk on, is eliminated. Powered by a 9 hp Briggs & Stratton air cooled, 4-cycle gas engine, the Atwood Terra gets 36 holes to a gal. at from 1 to 10 mph. It has rear-

New! Improved

WESTALL
RUBBER FLOORING

Lower Priced!

You get years of dependable service when you install our smooth surface rubber flooring! Choice of red, green or tan colors. Write or wire for sample and further information.

- Protects Clubhouse Floors For Years!
- Longer-Wearing, Tough, Firm!
- So Smooth, Safe and Easy to Clean!
- Does Not Buckle, Stretch or Crawl!
- Comes in Rolls 24 ft. Long, 36" wide and 5/16" thick.

HENRY WESTALL COMPANY

944-960 Merrimon Ave., Asheville, N. C.

USED AERIFIERS

1 - GL Jr.	\$295.00
1 - GL Sr.	350.00
1 - GL 2 (Used once only on 18 greens.)	595.00
1 - Model "U"	350.00
1 - GRASSLAN	795.00

(All with new spoons.)

The above machines are in excellent condition. Model "U" and Grasslan have been used only as demonstrators. Offered subject to prior sale. F. G. B. Asheville, N. C.

HENRY WESTALL COMPANY

944 Merrimon Avenue
Asheville, N. C.

GET STARTED RIGHT!

...on your new

Golf Course

(regulation or par-3)

Golf Clubhouse Driving Range Miniature Course

Use the National Golf Foundation planning, building and operating aids listed below to save time, money and headaches in putting any type of golf operation into play:

Planning & Building the Course

8½ x 11 inches 32 pp. illustrated \$1

Planning the Golf Clubhouse

9 x 11 inches 96 pp. illustrated \$9

Planning the Professional's Shop

8½ x 11 inches 50 pp. illustrated \$1.50

Operating Data For Private Golf Clubs

8½ x 11 inches 12 pp. FREE

The Municipal Golf Course Organizing & Operating Guide

8½ x 11 inches 128 pp. illustrated \$3

Golf Operators Handbook

(Miniature Putting Courses, Driving Ranges, Par-3 Courses)

8½ x 11 inches 112 pp. illustrated \$3

Community Planning Gets a Golf Course

(A 22 minute, 35mm Color Sound Slidefilm, available on loan or purchase)

NATIONAL GOLF FOUNDATION

407 So. Dearborn St., Chicago 5, Ill.

wheel steering for ease and safety on hills. Weighing 825 lbs., the Atwood Terra has an Indus Transpac transmission, centrifugal clutch and natural action lever for forward and reverse. Brakes are combination hydraulic-mechanical with additional hillholder. Meisel distributors will cover the U. S. and Canada and have complete parts and service available.

California Turfgrass Grows, Distributes Old Orchard

California Turfgrass Nurseries, Box 182, RR No. 2, Camarillo, has been given a franchise by Ralph R. Bond, Madison, Wis., to grow and distribute Old Orchard C-52 bent. Tobias Grether, who has offices at 15054 Lynn av., Los Gatos, is owner and M. V. Bailey, mgr., of California Turfgrass. This company will cover Calif., Ore., Wash., Nev., Ariz., Utah, Idaho and Mont. and its proximity to the western market will result in big transportation savings for courses in the area. Old Orchard is grown from stolons and is a versatile strain that survives in all types of weather — in the extreme heat of St. Louis where temps. sometimes go to 115 F. and in the cold of Winnepeg where they fall to 30 below.

Penna Designs New Wedge

Toney Penna, MacGregor club designer, has produced a new trap wedge which he developed after extensive study of the problems average golfers have in using wedges out of sand. The club has a bit more loft than is usual with wedges, is slightly heavier at the bottom, with large flange and a larger face. Although the club was designed primarily for effective use by ordinary golfers, MacGregor tourney staff men are praising the new implement. Pro orders of this item of the 1959 MacGregor line are reported to be large.

Cad-E-Mobile Is New Electric Powered Cart

An electric powered golf bag carrier is being



Here is Wilson's leather golf bag with matching carryall, known as the Executive Set. Bag has full length 3-section club dividers plus several other features and carryall has double zipper opening and plastic lined side pocket.

For better and more economical golf ball washing

HENRY Golf Ball WASHER

• Will dress up any course • Dirty water will not splash • Heavy gauge steel • **NEW** improved insert in rubber squeegee • Oil impregnated bearings • No brushes to rot.

A. C. Schendel, Distributor

Box 92, Waukesha 5, Wisconsin

Dealers in all principal cities



**BALL
WASHER**

\$14.75

Prices F.O.B.
Waukesha, Wis.

introduced by the Cad-E-Mobile Corp., Grand Rapids, Mich. Called Cad-E-Mobile, the machine eliminates carrying clubs or pulling carts. It has two speeds, one for comfortable, walking and a second, slightly accelerated to make hill climbing easier. Cad-E-Mobile, it is said, will easily go 18 holes on a single charge. Compact in design it is easy to haul or store and is assembled without tools in a couple minutes.

Imaginative New Acoustical Tile

Armstrong Cork Co., Lancaster, Pa., has introduced four acoustical materials that are designed to give an imaginative "new look" to ceilings in places such as pro shops and clubhouses. Completely incombustible, the various patterns have these features: metallic accents, the monolithic effect or three dimensional design.

Karl Kolb is sales rep for Agriform of Calif., Woodland, distributor for Nitro-form Agricultural Chemical Co. in the northern part of California, and Howard Chadwick is sales rep for Inland Fertilizer Co., 4134 Bandini blvd., L. A. which handles Nitro-form's so. Calif. accounts.

Berlin Chapman Co., Berlin, Wis., manufacturer of indoor driving ranges, and Consolidated Foundries & Mfg. Corp., Chicago, were recently merged. John C. Miller continues as Berlin pres. and genl. mgr. Berlin becomes a division of Consolidated.



Ford's new tractor-loader "package" has 2½ times the lift capacity of any previous Ford loader. Both tractor and loader are designed for versatile, high-production work of the most punishing kind. The new "Super-Duty" loader, has a 2500 lb. lift capacity, 5500 lb. break-away limit, and bucket sizes up to one cu. yd. The tractor can carry up to 7000 lbs. on its front axle and is designed to isolate driver and engine from shocks encountered in any kind of service. Two tractor models, the 1821 and 1841, are offered with gasoline or diesel engines.

**Tell Them You Saw the Ad
in GOLFDOM**

SAVE CLUB HOUSE FLOORS

**WITH SPIKE-RESISTANT
PNEU-MAT RUNNERS**

Protect your floors from spike holes with rugged Pneu-Mat Runners. Absolutely spike-resistant, they provide a comfortable walking surface—improve the appearance of your club house.

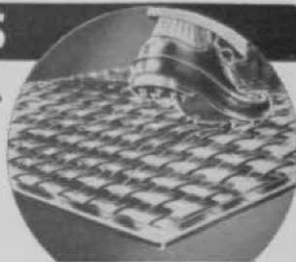
Woven of rubber-impregnated fabric, Pneu-Mat Runners are tougher than rubber runners. Reversible for double wear.

Money Back Trial Offer: Order a trial section. Test it on an area which gets especially hard wear. Money back if not satisfied.

STANDARD WIDTHS
20" - 24" - 30"
36" - 42" - 48"

Trial Section
24" x 60"
\$12.50 postpaid

Write today for illustrated folder



SUPERIOR RUBBER MFG. CO., INC. • 145 Woodland Ave., Westwood, N. J.



Pro-Grip Wax

**PUTS POWER
IN YOUR DRIVES**
Sold Through ALL
Leading
Distributors

MANUFACTURER'S SPECIALTY CO., INC.
2736 Sidney St. ST. LOUIS 4, MO.

Dunlop Revives Book-Pack for Xmas Gift Golf Balls

Dunlop Maxfli balls are available for Christmas, 1958, in a modernized version of the enthusiastically received book-pack of several years ago. The new edition of "Better Golf" presents one doz. Maxflis (reds or greens) between bright red covers with black simulated



leather binding decorated with gold lettering and emblem. "Page" edges appear in gold. The balls can be ordered with a personalized name imprint (minimum order each name is one doz.).

As a service to golfers whose pro shops close in the fall, Dunlop will accept orders for personalized balls and for gift-boxed balls at Dun-

MILLBURN



Sterilized ready to use

John Darrah, agronomist for Millburn Peat, Inc

MILLBURN PEAT COMPANY

111 N. Wabash Ave., Chicago 2, Ill

lop Tire and Rubber Corp., 500 Fifth ave., New York 36. The name of the club pro must be enclosed with the order so that he may be credited with the sale.

Bolt and Kroydon Sign For Club Line

Tommy Bolt has signed with Kroydon Golf Corp., Melrose Park, Ill. A line of clubs carrying his name will be made by Kroydon, according to Allan P. Hansberger, Kroydon vp in charge of sales. The National Open champion was with Kroydon three years ago.

Kroydon, which was sold several months ago to energetic young owners, plans to make a strong bid for pro business with men and women's clubs.

Jacobsen Promotes Two

Frederick W. Hazle has been named a field supervisor by Jacobsen Mfg. Co., Racine, Wis. His territory will include Ind., Ky., Mich., Ohio, W. Va. and part of Pa. and N. Y. In recent years he has worked as a Jacobsen service mgr. in Cuyahoga Falls, O.

Another Jacobsen appointment recently announced was that of William J. Lindsey as dist. sales mgr. for Iowa and Neb. He is making his headquarters at Ottumwa, Ia.

Monroe FOLDING BANQUET TABLES

Direct Prices and
Discounts to
Golf Clubs,
Lodges,
Parks,



Hotels,
Churches and
All Organizations
WRITE FOR
CATALOG

Manufactured By

THE Monroe COMPANY
12 CHURCH STREET COLFAX, IOWA

Kill WATER WEEDS!

Water hazards and lakes now may be cleaned of all rooted aquatic weeds. Lily, cattail, milfoil and many other aquatic weeds are easily killed with one application of R-H GRANULAR WEED RHAP. It is easily applied — will not harm fish or animals. This inexpensive application usually lasts from 18 to 36 months. Write for further information or ask your dealer.

REASOR-HILL CORPORATION

BOX 36GC, JACKSONVILLE, ARKANSAS

COLBY PIONEER PEAT

Products for building and maintaining golf greens are available in winter storage for prompt shipment.

BLACK—cultivated fine milled for top dressing.

BROWN—peat for building new greens.

GREENS—top dressing (1/3 peat - 1/3 sharp sand and 1/3 loam), or any required proportion.

QUOTATIONS on materials packed in plastic lined bags, or in bulk gladly furnished.

COLBY PIONEER PEAT CO.

P.O. Box 115

HANLONTOWN, IOWA

COUNTRY CLUB—RESORT and MUNICIPAL COURSE MANAGEMENT SPECIALISTS

Consultation Service or
Complete Course Management

National

International

DELAWARE VALLEY GOLF ASSOCIATES

6922 Rutland St., Philadelphia 49, Pa.

Fidelity 2-6974

Scorecard in MacGregor Glove Pack

Golfers who like to keep a check on their game will welcome the new MacGregor golf glove pack. The all-leather gloves come packed in season score card. The score card has a place for the date, the name of course each round is played and a space for listing par for the individual courses. Numbered from 69 to 120, golfers can indicate their scores with a dot on the appropriate spot and by connecting the dots by a line can quickly chart their progress or lack of it.



Handbook," is a technical reference book for student and teacher. Charts aid in understanding properties of quality urea-forms.

Dick Davis Gets Sales Spot with Professional Golf Co.

Jack Harkins, sales mgr. of Professional Golf Co. of America, Inc., 1233 Charter st., Chattanooga 2, Tenn., has engaged Dick Davis to represent the firm as a jobber in Ariz., Utah, Nev., New Mexico and West Texas. Davis, an outstanding golfer and native of Asheville, N. C., will push the sale of First Flight, the steel power center ball, and First Flight clubs, both of which are becoming very popular throughout the country.



Dick Davis

Nitro-Form Has Booklets for Superintendents, Manufacturers

Now available to supts. and others are two booklets prepared by Nitro-Form Agricultural Chemical Co., 92 Sunnyside ave., Woonsocket, R. I. They can be obtained from distributors or direct from the company. One is the "Superintendent's Turfgrass Manual" which is a guide to fertilizing, gives the range of nitrogen feeding and includes much other worthwhile information. The second booklet, "Manufacturers'

Scott Pamphlet Informative

O.M. Scot & Sons, Marysville, O., is distributing a pamphlet that gives an acreage and per 1,000 sq. ft. cost breakdown on quality use of its weed killer, 4-XD, Clout, Cope (for grub-worms), Turf Builder and Kansel (clover killer). It can be obtained from distributors or the company.

GOLF RANGES

MINIATURE GOLF COURSES

We Have a Complete Line
of Supplies

Write for Catalog

EASTERN GOLF CO.


Dept. A
2537 BOSTON RD.
BRONX 67, N. Y.

RYANS O.K. No. 4 SEEDER & SPREADER 4 Cu.Ft.(300 Lbs.) Capacity-3 Ft. Spread



No Holes to Clog.
Quick Shut-off Lever &
Adjusting Gauge
Screw On Handle
Spreads Top Dressing,
Nitro-Humus, Peat,
Commercial Manure
& Other Materials
Successfully
Weights Only 69 Lbs.
Write Dept. "G"

DEALERS WRITE FOR OPEN TERRITORIES
H. & R. MFG. CO., Los Angeles 34, Calif.



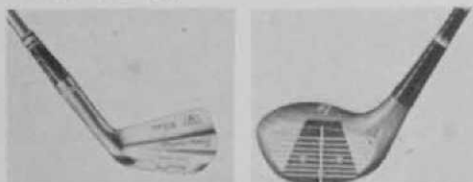
BOB BALDOCK
GOLF COURSE
Architect
FRESNO, CALIFORNIA



ROBERT BRUCE HARRIS
Golf Course Architect
MEMBER AMERICAN SOCIETY OF GOLF COURSE ARCHITECTS
664 N. MICHIGAN AVENUE CHICAGO 11 • ILL.
WHITEHALL 4-6530



Club House Caddy, Wilson Sporting Goods Co.'s Christmas golf ball package, offers King's Men After Shave and Cologne with 12 Staff balls. With the 6-ball package, the After Shave is included.



Top Notch woods and Dyna-Powered irons also are recommended as perfect gifts by Wilson. Strata-Bloc woods are finished in cognac. Irons have solid sandblasted face and top line and chocolate brown calfskin grips.

ROBERT TRENT JONES

Member:
American Society of Golf Course Architects

*Golf Course
Architect*

20 Vesey Street
Tel: Beckman 3-1023
NEW YORK, N. Y.

Southwestern Pipe Bulletin

A three-page engineering data bulletin dealing with a new plastic piping material known as Type II ABS has been released by Southwestern Plastic Pipe Co., Box 117, Mineral Wells, Tex. The pipe is offered in four pressure ratings. Applications for sprinkler systems are listed in the bulletin, along with physical and mechanical properties, chemical resistance data, flow characteristics, and working pressure charts.

Jacobsen Gives Warranty

Jacobsen Mfg. Co., Racine, Wis., now is giving a one-year warranty against crankshaft bending in its Hi-Torque engines that are mounted on rotary mowers with the 4-blade Turbo-Cut rotors. Warranties will be honored at any Jacobsen authorized service station where defective crankshafts will be replaced at no material or labor charge.

Fawick Signs Top Bowlers

Newly formed Pro Bowlers Assoc. have placed four men on the advisory staff of Fawick Flexi-Grip Co., Akron, O. which manufactures the Bowlers Pride grip. Fawick also manufactures Golf Pride grips.

Wm. F. Mitchell
Golf Course Architect

NORTH SUTTON
NEW HAMPSHIRE

P.O. BOX 7

PHONE 441

William F. Gordon

and

David W. Gordon

Golf Course Architects

Doylestown, Pennsylvania

Fillmore 8-4243

Members American Society of Golf Course Architects

GOLF COURSE CONSTRUCTION

By CONTRACT

35 Years Experience

MADDOX CONSTRUCTION COMPANY

Phone EXport 7-3221

Rankin, Ill.



John Deere has completed an industrial manufacturing unit in Moline, Ill. The new one-story building has 89,000 sq. ft. of floor space and located near it is a new steel storage structure with 24,000 sq. ft. of space. An expansion program at John Deere's Dubuque (Ia.) tractor works also is nearing completion.

**Robbins Installs V Grips
on Shoe Horns**

Al Robbins Enterprises, PO Box 867, Evanston, Ill., general golf merchandise supplier, is now equipping its elongated shoe horn with the double V practice golf grip made by Fawick Flexi-Grip Co. The item serves a double purpose, enabling the golfer to get into his brogans without bending over and gives him a practice gadget that allows him to constantly work on his grip. The grip is shaped to the hands, having ridged grooves and two V markings that are designed to get both hands pointing in the correct direction.

Ventilated Athletic Locker

Athletic lockers manufactured by DeBourgh Manufacturing Co., 2924 27th ave. South, Minneapolis, are of steel construction throughout and are fully ventilated to speed up drying of clothing kept in them. The lockers have three point locking mechanisms with provisions for padlocks. Finish is in baked enamel and is made to customer's color sample. The lockers are available in standard size or varied to meet special requirements and can be supplied with or without legs. Number plates and padlocks can be furnished at extra cost.



Display Room at Dunedin

A golf manufacturers' display room will formally be opened on Oct. 15 in Dunedin, Fla., home of the PGA. It will be under the direction of Jack Glass and will become a permanent fixture. Firms that already have agreed to display their products at the Dunedin shop include Bowen, Inc., Chamberlin Metal Products, Willard Battery Co. and Motor Appliance Corp.

DAVID GILL
Golf Course Architect

country club, resort
and municipal courses
of distinction

ST. CHARLES, ILL. phone 5883



James G. Harrison

GOLF COURSE ARCHITECT

Member
American Society of Golf Course Architects

**266 Harrison Road
Valley 3-3444**

**Turtle Creek, Pa.
Suburb of Pittsburgh**

ALFRED H. TULL

Golf Course Architect

Larchmont, New York

G. Press Maxwell

Golf Course Architect

3855 Walnut Hill Lane

Dallas, Texas

Fleetwood 2-8889



Member American Society of Golf Course Architects



These six International Harvester tractors are part of a complete new line of 12 commercial and farm tractors in six power sizes. From (l to r) they are: International 560, 72 est. ehp; the 460, 61 est. ehp; the 340, 45 est. ehp; the 240, est. 38 ehp; 140, 28 est. ehp; and the International Cub Lo-Boy, 12.8 est. ehp.

Eradicates Aquatic Weeds

R-H Granular Weed Rhap-20, manufactured by Reasor-Hill Corp., Jacksonville, Ark., containing 2-4-D, is proving highly effective in eradicating water weeds and is getting wide application in resort and recreation areas. The product is simply spread on lake or pond surfaces and sinks to the bottom where weed roots are attacked. According to Reasor-Hill, the product will not harm fish, animals, trees or shrubs and becomes fully effective in about 10 or 12 days.

1959 MacGregor Catalog

Just off the press is the 1959 MacGregor catalog. All pro shops in the U. S. have received a copy. Highlights of the catalog are its modernistic appearance and presentation of MacGregor's new "Flame Ceramic" irons. In addition, a 10-page golf bag section is shown in full color. Additional copies are available from The MacGregor Co., Cincinnati 32, Ohio.

Buyers' Service • P. 127

WILLIAM P. BELL & SON

GOLF COURSE ARCHITECTS

Member: American Society
of Golf Course Architects

544 Sierra Vista Avenue
Pasadena 10, California

Sycamore 3-6944

Atlantic 7-2933

LOCKER NAMEPLATES



Write for sample and prices

KIRSCH CARD SERVICE

BOX 426X, ELMHURST, ILL.

Golf Score Cards

Get the BEST from "VESTAL"

CHARGE CHECK BOOKS
HANDICAP CARDS and PANELS
BAG and GUEST TAGS

(WRITE FOR CATALOG)

VESTAL-MONROE PRINTING CO.

ESTABLISHED 1912

TELEPHONE HARRISON 7-6314

701 S. LA SALLE ST. • CHICAGO 5

We specialize in Golf Club Printing

OWENS GOLF TROPHIES

with design and workmanship
always ahead of the parade

Send for FREE CATALOG

R. S. OWENS & CO.

Manufacturers of fine trophies

4939 NORTH ELSTON AVE.

CHICAGO 30, ILLINOIS

Reminder from Manufacturer's

Manufacturer's Specialty Co., 2736 Sidney St., St. Louis 4, reminds pros holding Appreciation cards that entitle them to a chance on a diamond ring that the cards should be mailed to the St. Louis address, to be received by Nov. 25, in order to be included in the prize drawing. The drawing will be made at the annual PGA meeting. The cards have been included in Pro-Grip product packages throughout the year.

Tiddy Added to Wilson Staff

Dick Tiddy, 6 ft., 5 in., 235 lb. pro from the Charlotte (N. C.) CC, has recently been added to the golf advisory staff of Wilson Sporting Goods Co. A pro since 1953, Dick was a member of the Wake Forest College golf team from 1949 to 1953. He is a native of Charlotte. Tiddy has played irregularly on the tournament circuit in the past few years but plans to increase his appearances in the future. One of the largest players in golf, Dick is noted for his ability to hit booming drives.

Robert W. Betts was recently named a product supervisor in the quality control div. of Keasbey & Mattison Co., Ambler, Pa., pipe manufacturing concern.

WITTEK

for the best of the latest in

**RANGE - PAR 3
MINIATURE**

EQUIPMENT - SUPPLIES - FIXTURES

Write for complete catalog

Wittek Golf Range Supply Co., Inc.

5128 W. North Av., Chicago 39, Ill.



Worthington Triplex mowers, made by Worthington Mower Co., Stroudsburg, Pa., are being used extensively at the World's Fair grounds in Brussels, Belgium. Swiss workmen from Worthington's European rep, Otto Richei Ag., keep the mowers in condition. At the close of the fair, the city of Brussels will take over the mowers for maintenance of its parks.

Brown with Jacobsen

The Jacobsen Manufacturing Co., Racine, Wis., maker of power lawn mowers, has announced appointment of Stuart H. Brown as dist. sales mgr. for Okla., Kan., N. M. and Colo.

ATTENTION

Driving Range Operators and Distributors. We specialize in rebuilding golf balls with strictly new materials. Satisfaction guaranteed.

WAYNE GOLF BALL CO.

31117 Little Mack

St. Claire Shores, Michigan