

SAVE CLUB HOUSE FLOORS

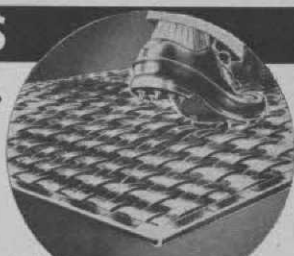
WITH SPIKE-RESISTANT PNEU-MAT RUNNERS

Protect your floors from spike holes with rugged Pneu-Mat Runners. Absolutely spike-resistant, they provide a comfortable walking surface—improve the appearance of your club house.

Woven of rubber-impregnated fabric, Pneu-Mat Runners are tougher than rubber runners. Reversible for double wear.

Money Back Trial Offer: Order a trial section. Test it on an area which gets especially hard wear. Money back if not satisfied.

DDD



STANDARD WIDTHS

20" - 24" - 30"
36" - 42" - 48"

Trial Section

24" x 60"

\$12.50 postpaid

Write today for illustrated folder

SUPERIOR RUBBER MFG. CO., INC. • 145 Woodland Ave., Westwood, N. J.

berellic acid but no improvement was obtained in rate of turf establishment.

Additional research is necessary to determine the value of gibberellic for breaking spring and fall dormancy of both cool and warm-season grasses; its usefulness as an adjunct for weed control; and to determine whether rate of root growth is affected adversely by the high concentrations of gibberellic acid.

Use Forceful Approach in Selling Club on Improvements

An article in the Green Breeze, monthly publication of the Greater Cincinnati GCSA, written by a fellow with the pen name of Edsel Midiron, declares that many a supt. doesn't use the right approach in requisitioning a new piece of equipment or a course improvement.

Too often, says Edsel, an oral request is made and the official to whom it is given forgets it, or the supt. doesn't follow it up. Many times a proposal is

merely scratched on a piece of handy paper and doesn't make much of an impression when it is passed around at a green committee or board meeting.

Edsel says he has been guilty of such practices. But he has noticed that when he carefully draws up a proposal with plans, diagrams, costs, etc., clearly explained, his chances of getting favorable action are increased 100 per cent.

Model Put on Display

A year ago when Edsel wanted to replace a poorly constructed green that had given him a great deal of trouble for as long as he could remember, he made up a Pastalena clay model of a new green that showed drainage contours, sandtraps, mounds and surrounding trees and a creek. It was mounted on plywood and even sand was put in the traps. The green committee couldn't okay it fast enough. Then the model was displayed in the clubhouse lounge for two weeks with the supt's name prominently displayed as the architect.

The most versatile Turfgrass ever introduced

W & G
Ugandagrass
TRADE MARK

Have you seen the W & G Ugandagrass tee,
Gleneagles C. C., Lemont, Ill.?—Walter Fuchs, Supt.

O. S. BAKER FINE TURFGRASSES

ROUTE 4, BOX 876

9995 S.W. 88TH ST. (N. Kendall Drive)

MIAMI 56, FLORIDA

MOhawk 7-8512

FRED V. GRAU

P.O. Box 177; COLLEGE PARK, MD.

UNION 4-0090

ADDRESS ABOVE FOR
FREE BULLETIN—DEPT. G2