

Swinging around Golf

NEWS OF THE GOLF WORLD IN BRIEF

Vince Holian now pro at Del Norte GC, Crescent City, Calif. . . . Building Carolinas CC course between Tabor City and Loris, N. C. . . . Janss Investment Corp. to build Las Posas course near Oxnard, Calif. . . . Pinecrest CC, Longview, Tex., spending \$135,000 on course and clubhouse improvements . . . Greenwood (S. C.) GC opens new pool.

Art Rosenbaum, golf writer of San Francisco Chronicle forecasts that helicopters will take golfers from office building roof heliports to 18-hole golf courses 50 or 100 miles away . . . Says murderous taxes and increased land use will cut size of courses in or near big cities to 9 holes.

Surprising number of golf courses being chopped up by highway construction . . . Big graft in federal, state freeway and toll roads is a major factor in the road building spree, according to disclosures in trials of politicians and others involved in this phase of "public service." . . . Much of the highway routing shows highway engineering isn't among the branches of engineering that can boast of its foresight.

Phil Smith succeeds Mavor Boyd as mgr., Melbourne (Fla.) G&CC . . . Melbourne club lease on city-owned course and improvements bought from Don R. Boyd by newly formed organization . . . Pittsfield, Ill., group headed by Clarence Marshall to build course . . . Johan W. Dawson Co. and Trousdale Construction Co. to build new course and real estate development with name of Marin G&CC 7 miles north of San Rafael, Calif. . . . Lawrence Hughes is architect of the 18 hole course.



HERB GRAFFIS

Huntsville, Ala., city council planning to add 9 holes to many course . . . Present course earns \$7,000 a year . . . Construction of first 18 of 36-hole El Dorado CC between Indian Wells and Palm Desert, Calif., finished and seeded . . . Johnny Dawson, Jimmy Hines, Robt. McMahon, Ray Ryan, Barney Hinkle and others are associated in the project which includes a "western town" on order of Scottsdale, Ariz., on 792-acre development.

Battle Creek, Mich., to have 18-hole conventional course and 9-hole par 3 course in new park on site donated by widow of Charles Binder . . . City officials plan to start construction soon . . . Previous many course in Battle Creek was closed about 20 years ago by Michigan Dept. of Health ruling which prohibited operating a golf course over well areas furnishing public drinking water supply.

Lake Cora Hills GC, on US 12 near Paw Paw, Mich., to open 9 holes next spring . . . Carl Hegenauer expects to open second 9 of his Maple Hill GC, near Saginaw, Mich., June, 1958 . . . Wm. L. Johnson and sons, owners of Ace Plating Co., building Hickory Hills 9-hole semi-private course as 5th pay-play course in Grand Rapids, Mich., area. . . . Ira Dustin, formerly supt., Cascade Hills CC, is doing the job.

Supts. this summer have needed tranquilizer pills a lot more than tournament pros. . . . Very bad summer for grass in large part of the country. . . . Situation aggravated by 1956 generally being favorable for golf turf and golfers got the idea courses always would be in last year's

The luckiest kids in Wheeling, W. Va., those who spend the summer camping out at Ogleboay and caddying for golfers there, gather around Ex-Caddie Sam Sneed. In addition to stocking up on autographs from a fellow who most of them consider the greatest man who ever lived, or at least the noblest West Virginian of them all, they absorb wit, wisdom and golf lore from a fellow himself, who little more than a quarter century ago, was carrying bags in neighboring Hot Springs. (See story on page 21.)

Front
Cover

FOR FALL DELIVERY

▶ After September 1, 1957

ARLINGTON C-1

▶ STOLONS

CONGRESSIONAL C-19

▶ STOLONS

COHANSEY C-7 STOLONS

▶ PENNLU STOLONS

ALBERT LINKOGEL

30 Years' Experience on
Turf Maintenance

LINK'S

Nursery, Inc.

ROUTE NO. 3, CONWAY RD.
CREVE COEUR, MO.

the TOPS in TURF!



condition. . . Demand of highly vocal players for close-cut fairways is playing hell with bluegrass fairways and supt. gets blamed for fairways being in miserable shape . . . This is one of pressing problems in turf field.

Longview (Wash.) CC planning to build second 9 . . . Work starts on Liberty Lake 18-hole course near Spokane, Wash., to be operated by county . . . Arbor Hills CC Jackson, Mich., to spend \$200,000 on clubhouse remodeling and expansion . . . Santa Barbara, Calif., Chamber of Commerce sponsoring contest for naming city's new munny course . . . Coupons for entries appear in local newspapers . . . Prize is \$25 U. S. Savings bond.

Palatine (Ill.) GC, 9-hole semi-private, being built by Joseph J. Kozeluh of the family which owned the Mannheim GC semi-private course, also in the Chicago district . . . The Mannheim course was knocked out by the scandal-plagued Illinois toll road . . . Johnny Battini, pro at Olympic Club's two courses at San Francisco for 19 years, has contract renewed . . . For 10 years Johnny was asst. to Macdonald Smith.

Jack Berweiler, pro at Arrowhead CC, San Bernadino, Calif., named Sportsman

NEW! MODEL 400 SIMPLEX Lawnmower Sharpener

Many Exclusive Features . . .

The NEW SIMPLEX is the fastest, most accurate straight-line lawnmower grinder ever built . . . gives you all these advantages:

- Grinds all mowers—reel type, rotary, hand or power, any size.
- No dis-assembly needed, gas and oil remain in engine, support bar rotates.
- Grinding head feeds both horizontally and vertically, turns 90° for bed knives.
- Fast, positive adjustments, 4-point support on steel base with leveling screws.
- Rugged, long life construction and many other features.

The Fate-Root-Heath Company

Dept. G-9 • Plymouth, Ohio



Get the facts on the new
SIMPLEX 400 before you buy
any sharpener.
Send for FREE brochure today



**On the Green and Fairway
tractor-fed ROYERS really
cut turf-care costs**



Cutting turf care costs really isn't much of a problem when you own an "R" or "Y" Series Royer Shredder. These tractor-fed models process up to 12 cu. ft. of top dressing in 15 seconds. When "dressing" greens and fairways, quantities like this are important.

"Royerated" top dressings are thoroughly mixed, aerated and reduced to fine particle size. They soon work into the soil, developing luxuriant, healthy turf that can withstand broiling sun and rugged play.

Write today for our new bulletin "Royer Shredders for Turf Conditioning Materials" and the name of your nearest distributor. He'll be glad to arrange for an on-the-spot, obligation-free demonstration.



**ROYER FOUNDRY
& MACHINE CO.**

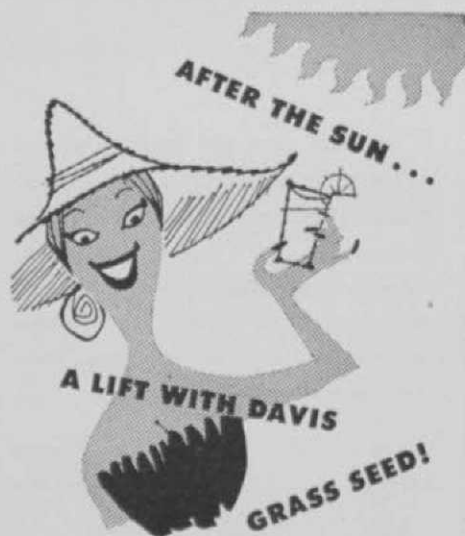
ROYER

171 PRINGLE ST.
KINGSTON, PA.

of the Year by the Citrus Belt Sports Writers' Assn. . . . Olympia (Wash.) G&CC to build second 9 to plans of Fred Federpiel . . . Yolo Fliers' Club, Woodland, Calif., to have second 9 built per Bob Baldock's architecture.

Vestal Hills CC, Binghamton, N. Y., new 18 designed by Geoffrey S. Cornish, to open in June, 1958 . . . Club sold site of its present 9-hole course for use as shopping center and residential area . . . Interesting argument to which we listened recently concerned the number of dogleg holes that good golf architecture would permit . . . There is no general answer . . . The Old Course at St. Andrews has 6 decidedly dogleg holes and about 14 that the golfer of 6-handicap and higher had better play as doglegs.

Incidentally, the above-mentioned argument sent me to books on golf course architecture and the chapter on "Elements of Golf Course Design" that Robert Bruce Harris and Robert Trent Jones wrote for "Turf Management" the USGA Green Section manual edited by H. Buron Musser . . . "The Links" by Robert Hunter and "Golf Architecture in America" by George C. Thomas, jr., both are out of



Davis grass seed will give your greens, tees and fairways that needed lift after a hot scorching summer sun. Let us take care of your fall seeding requirements.

GEORGE A. DAVIS, Inc.

5440 NORTHWEST HIGHWAY, CHICAGO 30, ILLINOIS

conv
l tees
on th
ve roo
with
—soil w
d moist
reated
these
The heav
ry weath
as unless

see enc
dry sp
other
, we
ts ar
; a
to
950.
; lat
mpo.

l with
with lo
every ye
its alway
how muc
a wetting
d I lose?
tervals. Be
remained gr
1 the green
ing, or a
med to be
to use A
ll save

ens
3RC
be
it
ca
n
been



for the
full
story

use

Aqua-Gro

R. Q. Moore

AQUA-GRO®

NON-IONIC ORGANIC WETTING AGENT

CHECK THESE SAVINGS

- ✓ DEEPER, MORE UNIFORM SOIL-MOISTURE
- ✓ LESS FREQUENT WATERING
- ✓ PROBLEMS FROM THATCH CURED
(Tees, fairways and greens)
- ✓ HARD SPOTS ELIMINATED
(Greens and aprons)

Correspondence invited or write for further information.

AQUATROLS CORPORATION OF AMERICA

730 Lancaster Ave. • Bryn Mawr, Pa.

print . . . You might be able to get them at second-hand book stores.

British books on architecture include "The Game of Golf" which has fine chapters on architecture by Tom Simpson . . . A. S. Barnes & Co., 232 Madison ave., New York handle this book . . . "Golf Courses — Design, Construction and Up-keep" published by Sutton and Sons, Ltd., Reading, Eng., contains contributions by P. Mackenzie Ross, Tom Simpson, Robert Trent Jones, Martin A. F. Sutton, C. H. Alison and C. K. Cotton . . . "The Architectural Side of Golf" by H. N. Wethered and T. Simpson, is published by Longmans, Green & Co., Ltd., London.

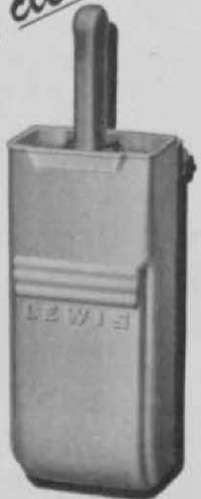
Some very interesting and informative material on the architectural development of the Old Course at St. Andrews is in a book about the R&A published a year or so ago . . . I loaned mine to a pal . . . Good-bye, forever . . . Book, not pal.

In the Thomas book, published in 1927, there is a fine design of a par-3, 18-hole course and a design of a 9-hole, 3-greens and 9-tees course, along with instructive pictures, drawings and text on the standard type of golf courses.

Nine holes being added to 18-hole Raleigh (N. C.) Golf Assn. semi-public course . . . George Cobb designed the new 9 . . .



for a real clean shot



LEWIS
Ball Washer

Specially treated paint, sealed and protected with a tough coating of weather-resistant plastic. "Magic paddle action" spins ball to clean every part of the surface.

Service for years — with so little maintenance

CONTAINER DEVELOPMENT CORP.

Watertown • Wisconsin

CUT LABOR COSTS

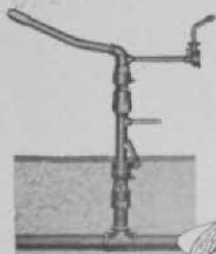
with

BUCKNER

Quick-Coupling

VALVES

Labor costs reduced to a minimum. Easy to handle, self-closing, grit-proof Quick-Coupling valves provide fast turf watering with hose or sprinkler. Out of sight for beauty and mower protection.



TURF KING SPRINKLERS

Positive low cost penetration. Turf King sprinklers provide maximum efficient coverage over large turf areas. Dependable rotation. Bearings are sand-proof.



MANUFACTURING CO., INC.

1615 Blackstone Ave. P. O. Box 232 Fresno 8, Calif.

Blue Gum Lodge, between Willows and Orland, Calif., planning to build 9 hole course . . . Portland GC near Lansing, Mich., celebrates its 30th birthday by opening second 9.

Hinsdale (Mass.) CC, owned by Alfred J. Basiliere and wife, now in attractive new clubhouse . . . Course was remodeled and extensively improved prior to this year's opening . . . Indianwood G&CC (Detroit dist.) to be remodeled and extended to 7,500 yds this fall . . . It will be Michigan's longest course . . . John Walter, Detroit News golf writer, says Indianwood's 18th green probably is largest in U. S. . . . It is 175 ft. wide and 180 ft. deep . . . Over 30,000 sq. ft.

Peoria (Ill.) Pleasure Driveway and Park District considering building a 9-hole par-3 course financed by special bond issue under terms recently authorized statewide by Illinois legislature . . . Under the legislation's terms public courses, including lockerroom facilities can be acquired, constructed and operated by bonds payable only by receipts from course . . . Such bonds can be issued without referendum vote . . . The measure contains a provision whereby a petition signed by 1,000 voters could force a vote on the question.

Get Rid of Leaves...

WITH A

WOOD'S ROTARY

- 12 Models . . . for every tractor
- Mows grass, shreds brush, mulches leaves
- Quick detachable, free-swinging blades
- Trouble-free, simple construction
- Costs less to buy and operate

The Wood's Rotary Mower with leaf mulcher adds days to the golf season. Encourages more late play because of fewer lost balls. Members spend more time playing—less time hunting. The Wood's Rotary will end your leaf worries forever. It's ideal for large acreage grass and weed control—brush cutting, too. The Model 80 takes nearly a 7-foot swath, covers up to 4 acres an hour. Maneuvers easily around banks and ditches. For cutting it's more dependable and less expensive than reel-type or sickle bar machines.



MODEL 80 with Mulcher—6'8" cut

12 models . . . 42" to 114" cut. 42" under-mounted for Farmall Cub, Lo-Boy, Super A, 100, A-C G, M-H Pony and Pacer. 42" rear-mounted for Fast-Hitch Cub and Lo-Boy. 61" and 80" rear-mounted for Fast-Hitch Farmalls Super C, H, M, 200, 300, 400, I-300 (all use 3-pt. adapter), and all standard 3-point hitch tractors (Ford, Ferguson, Oliver Super 55, etc.). 61", 80", and 114" drawbar pull-types for any 2, 2-3, and 3-4 plow tractor. 80" offset model (2-3 plow) for working under trees.

—Send Today for Complete Information—

WOOD BROTHERS MFG. CO.

19709 South 4th St.
Oregon, Ill.

NEW YARDAGE MARKER

200

- BLACK NUMBERS
- YELLOW BACKGROUND
- ALUMINUM FRAME

REPLACE TURF

One side gives fairway yardage (150, 200, 250 or 300), other side reads "Replace Turf." Frame 4½" x 9" fitted with two ground stakes. Prompt delivery.

STANDARD MANUFACTURING CO.

Box G57, Cedar Falls, Iowa

Vandalism on golf courses seems to be getting worse each year . . . Recently vandals got into golf car garage at La Gorce course at Miami Beach, Fla., took out 11 cars and ran them all over the course, playing tag with them and wrecked all eleven . . . Two greens at Kitsap G&CC, Bremerton, Wash., badly damaged by automobile running deep circular ruts into the greens . . . Cost of repairs to greens estimated at \$1,200 . . . Damage partially repaired before Washington State amateur was played at Kitsap, Aug. 12-16 . . . Horses ridden several times over three greens under construction at new Haggin Oaks 9-hole muni course at Sacramento, Calif.

Tom Kinney, sports editor, Columbus (Ga.) Ledger-Enquirer, wrote most informative newspaper column we've ever seen on golf turf in telling about job being done at Columbus CC in changing to Tif-green Bermuda after soil preparing using Dowfume MC-2 gas . . . Kinney got his data from Frank Lumpkin, jr., Columbus CC green chmn.

Pine Hills GC, new 18-hole semi-private club in southwestern suburban Cleveland, O. opened . . . Harold D. Paddock, sr., is architect of Pine Hills . . . Melvin O. Houser is supt. . . . Taconic State Park

TURF that Speaks for Itself!

ALBERT ALLEN GROWS EXCEPTIONAL GRASS AT KERNWOOD

Albert Allen has made the golf course at Kernwood Country Club, Salem, Massachusetts, second to none for play. His greens of Kernwood velvet bent are keen and true. They are a sight to behold. The fairways are a dense mat of deep green turf. Every lie is a perfect one.

Milorganite has been one of the tools used by Albert Allen to produce such wonderful turf. He applies a large sized carload every year.

If you have a turf problem, Consult:



THE SEWERAGE COMMISSION, Milwaukee 1, Wis.

CLUBS
USE

MILORGANITE

THAN ANY
OTHER FERTILIZER



**"Regular use of
AGRICO and
AGRINITE
contributes
greatly to the
excellence of
our Course
selected for many
important tournaments."**

—says Elmer J. Michael, Supt.
OAK HILL COUNTRY CLUB,
Rochester, N. Y.



Mr. Michael also says: "AGRICO and AGRINITE play a very important part in our turf maintenance program and in the constant excellence and fine quality of greens, tees and fairways on both East and West Courses."

IT WILL PAY YOU to use AGRICO and AGRINITE, the 100% Natural (not synthetic) Organic Fertilizer. See your regular supplier, or write to The AMERICAN AGRICULTURAL CHEMICAL Co., New York 7, N. Y.

AGRICO®

America's Premier Golf Course Fertilizer

AGRINITE®

the Better, Natural 100% Organic Fertilizer

(N. Y.) Commission OKs plans of Robert Trent Jones for 9-hole addition to Staatsburg-Dinsmore course.

Haleyville (Ala.) G&CC organized to build 9-hole course near city's airport . . . Aptos Beach GC opens first 9 . . . Second 9 to be opened soon . . . Ed Holbrook is pro . . . Club is south of Santa Cruz, Calif., and used to be known, pre-World War II, as the very de luxe Rio Del Mar club.

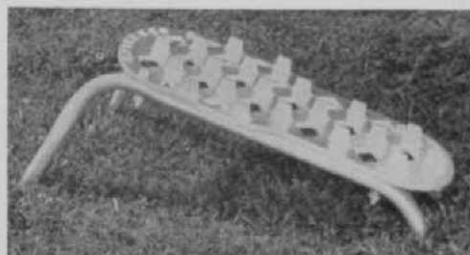
Bob Jones main speaker at Jaycees' national junior championship banquet . . . Dow Finsterwald and Jimmy Thomson conducted clinics at Jaycee championship at Ohio State university courses, Columbus, O., won by Jack Nicklaus.

MacGregor Golf salesmen and executives held dinner honoring Tom Robbins, senior statesman of the company's sales staff who will retire to his estate near Pinehurst next year . . . Robbins, winner of numerous senior golf championships, was presented with a shotgun by Harry Adams, representing Tom's companion peddlers . . . The dinner was put on during the company's annual sales meeting . . . Pete Bullis played rock-and-roll numbers with sales force, headed by Pres. Henry Cowen

SPIKLEEN

"THE GOLFERS' DOORMAT"

- ON THE TEE
- AT LOCKER ENTRANCES



Introduced this spring — now in use
at clubs from coast to coast.

\$8.95 each . . . 6 for \$50

Postpaid anywhere in the U. S.

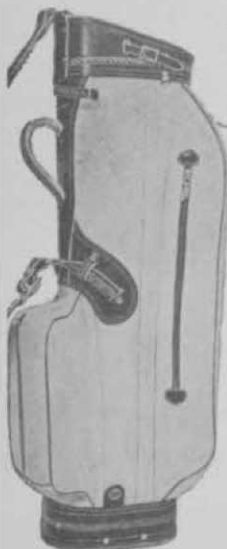
SPIKLEEN CO.

10 Warren Road, Maplewood, N.J.

Tufhorse

announces a
SPECIAL SALE

... while
they
last!



Yes, we are selling out two of the most popular models in our line at an attractive reduction. We have just a limited number left, so order now.

(If you've received samples, send repeat orders at earliest possible date to be sure of delivery.)

MODEL 54-30

(Formerly L654)

Regular \$35 Retail

SPECIAL NOW AT \$27

A large, 9-inch Keystone of sturdy pearl-gray duck and contrasting embossed black leather trim, the 54-30 has many deluxe features, including an attached hood concealed inside zipper opening on top of clothing pocket. It's nylon lock-stitched throughout.

ANOTHER BIG VALUE

Model KD8H—Here's an 8-inch bag similar in quality and appearance to 54-30 but made of creamy-white, heavy-laminated auto top material trimmed with natural russet strap leather.

Model KD8H, with attached hood . . . Special at \$22.50 retail.

Model KD8, same as above but without hood . . . An exceptional retail value at \$20.00.

Order these models direct from the factory. Also Available direct from factory are all the famous Tufhorse Golf Bags listed in the former 1957 catalog showing Tufhorse models. Your order will receive immediate attention.

Tufhorse

GOLF BAGS

MADE BY
DES MOINES GLOVE & MFG. CO.
DES MOINES, IOWA

and Sales Mgr. Bob Rickey, throwing rocks and rolls at the professor . . . "This Is Your Life, Tom Robbins," was given for education and inspiration of younger members of the staff . . . Herb Graffis did the research and sound on the Robbins biography.

Fifth course at Bethpage Park (NY Met. dist.) will open in May, 1958 . . . Forest Hill Field Club, Bloomfield, N. J., celebrates 60th anniversary by burning its final mortgage (\$71,000) . . . Mortgage paid from \$250,000 subscribed by members . . . Rest will go for clubhouse remodeling

George Bayer, who in recent months has come into his own on the pro circuit, allows he has made as much money in two years playing golf as he would have in eight years as a pro football player . . . Bayer was a grid great at Cincinnati U. . . . Dick Mayer, the Open and World's champion, does a good job of playing the piano . . . Sam Snead quote: "Driving's the last thing a man loses. Putting and chipping go first, then pitch shots."

Los Coyotes CC, now being built in Buena Vista, Calif., will cost 2½ million and be centered in 900-acre residential

(Continued on page 62)

PHILLIPS

CAM LOCK

GOLF SPIKES



The world's finest and best known.

Will not turn or break apart.

PRO'S CHOICE

F. C. PHILLIPS, INC.

STOUGHTON, MASS.

SQUIRE GOLF SLACKS

by DiFuria

Tailored to perfection
for comfort in action



FALL 1957

Featuring the following ranges in our Par Golfer half-belt model

- 2200 Dacron and Wool Flannel (9 colors)\$12.00
- 2500 100% Worsted Flannel (9 colors)\$13.50
- 1000 100% Worsted Sheen Gabardine (12 colors)\$13.50
- 2600 100% Worsted Bedford Cord (6 colors)\$13.50

In addition, we style a complete selection of Dress Slacks in Forstmann Doeskin, Forstmann Ripple Cord Gabardine and others.

We also feature Lady Par Bermuda Shorts in Worsted Flannels, Gabardines, Anglo Doeskins and Stripe Flannels.

WORN BY LEADING GOLFERS
FROM COAST TO COAST!

WRITE FOR FREE CATALOG & SWATCHES

SQUIRE SLACKS

Dept. G

18 West 20th St.

New York 11, N. Y.

Swinging Around Golf

(Continued from page 16)

area community of estate homes ranging from \$30,000 to \$110,000 . . . 27-hole course will cover 256 acres . . . Bill Bell is the architect . . . Bill Bengeyfield, USGA green section Western director, reports summer of '57 has been a trying one for turfmen from Phoenix to Frisco . . . High temperatures have seared the poa annua and slowed the bent . . . He adds that of every 10 greens that have gone sour this summer, eight have done so because of too much water . . . Western Golf Assn. reports that 346 caddies will attend college this fall on Evans scholarships . . . The program is the world's largest supported by individual contributions.

Selva Marina CC Board Chmn. Joe Aedebe says construction started on new club's 18-hole course at Jacksonville, Fla., Sept. 1 . . . Wm. F. Bell, who designed 18-hole course for Whitter Narrows, Los Angeles County recreation area, recently was appointed by county supervisors to design an additional 9 . . . Milan (Tenn.) G&CC recently formed.

Players in recent amateur tournament at Randall munny course, only grass green course in that part of south central Missouri, said Supt. Fred Runge has done marvelous job in conditioning course and that his wife, Ethel, also is a star at course maintenance work . . . Los Angeles County 1956 grand jury, in recommending that taxation of private courses be moderated to preserve them from being subdivided, pointed out that assessments recently had been increased from 23.2 to 81.8 per cent on private courses in the county.

Los Angeles County recently followed City of Los Angeles in raising course rates . . . New LA County basic rate is \$2 on weekdays and \$2.50 on Sat. Sun. and holidays . . . San Diego also raises rates on many courses to \$1.50 weekdays and \$2 for weekends and holidays . . . Half prices charged for 9 holes or for 18 holes during the hour preceding the close of business.

City of Palm Springs, Calif., has citizens' committee investigating possibility of building munny course . . . Bill Remlinger heads group planning to build course at Delphos, O. . . Kalamazoo (Mich.) City Parks Supt. Nick Kik expects to have new munny 18-hole course in play next year . . . Course to have big range with plastic roofing over range tee area very handy to first tee.

Roy Gunderson, county park and recreation director, expects to begin building Liberty Lake course at Opportunity, Wash., early in 1958 . . . Construction almost completed on Loris-Tabor City (N. C.) 9-hole course . . . Preston Hennis, pro at Conway was architect and Tally Eddings is in charge of construction . . . Antioch (Calif.) munny course to be

enlarged from 9 to 18 holes . . . Bob Baldock is architect . . . Oliver Sleppy is pro and director of the Antioch course.

Sam Street pro at Thousand Island Park (N. Y.) GC which is in its 46th season . . . Walter Ashcraft, sec., High Lands GC, Pataskala, O., says that first 9 of the 18-hole course will be in play in May, 1958 . . . Really pushing construction of DeSoto Lakes G&CC at Sarasota, Fla. now . . . Dick Wilson is architect . . . Troup Construction Co. building the job under Dick's supervision . . . Tom Utterback, sec. of the DeSoto company says lot purchases in project are ahead of schedule with several prominent playing professionals among the buyers.

Ed Miles in Atlanta Journal says more than 12,000 golfers play 19 courses in Atlanta during an average week of the season . . . Start building 9-hole course of Grifton (N. C.) CC of which W. L. Dawes is pres. . . . Making fast progress in building Bayside Land & Investment Co. 9-hole course at Eureka, Calif. . . . Frank Moore, co-owner and pro of recently opened DeLand (Fla.) CC, hired John R. Porter as asst. . . . Realtor Ed Tonti plans to build 18-hole course soon southwest of Columbus, O.

Owner Bob Faris opens Brae Burn GC, Dansville, N. Y., with Ray Knapp as pro . . . Jans Investment Corp. to build 18-hole course in Las Posas Estates area near Camarillo, Calif., with Lawrence Hughes as architect . . . John, Walter and Steven Klinkowize intend to build course at their Crest View Beach & CC, New Windsor, N. Y.

James Edgar Williams III arrived recently at Marietta, Ga., where pappy is Marietta CC pro . . . His mother says III hasn't thrown any clubs yet but he can howl just as loud as any pro who ever missed a III-foot putt . . . Chico, Calif., Bidwell Park muni course opens second 9 and says it now is only 18-hole course in the state north of Sacramento and for beauty ranks with any of California's courses.

Otto Greiner, pro at Knickerbocker CC, Tenafly, N. J., in winning second annual Festival of Golf at Fred Waring's Shawnee CC, opened with a 62 that beat record set by Byron Nelson . . . Northern Ohio PGA will play its 1957 championship at Elyria (O.) CC Sept. 26 at same time Ohio senior pros will qualify for Teacher's trophy national championship at Dunedin next January.

Miss Catherine Ann Nary, daughter of Mr. and Mrs. Bill Nary, born at Tuscon, Ariz. while Daddy was pounding away in St. Paul Open . . . She weighed in at 5 lbs., 4 oz., just about the heft of a handful of sunbeams . . . Bill planning to leave circuit for club pro job and be with Mom and Baby.

Golf lost one of its fine gentlemen when cancer took George Atwell Post, supt. of Springfield (Mass.) public courses . . . of many supts. consulted him . . . He graduated from University of Mass. with degree in agronomy in 1913 . . . Was construction supt. for Wayne E. Stiles on numerous courses and supt. at

NEW SPECIALTY SALES STIMULATOR



PRACTICE GRIPS

Insure the success of your instructions at a profit.

Sell V-V grips, the "good habit" forming grips.

V-V Practice grips have correct handform molded in. The shaping makes it difficult to hold them anyway but the right way.



Two V's position thumbs and fore-fingers according to Vardon method of gripping.



Ridges in grips position other fingers, completing position of hands for best swing.

STOCK V-V GRIPS

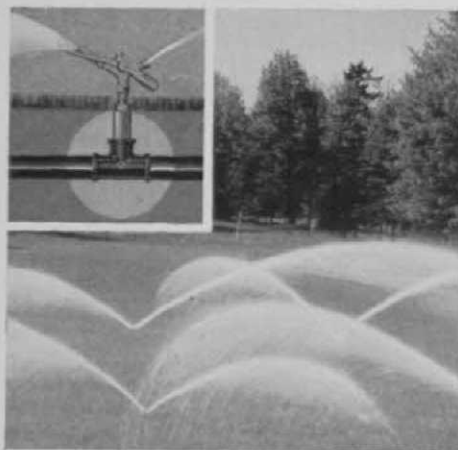
Displays win attention. Sales bring profits and player satisfaction.

FAWICK FLEXI-GRIP CO.

Box 8072

Akron 20, Ohio





Let CARLON® help you get a *Trouble-Free* watering system

that's permanent, costs less

Carlton's sprinkling-system engineers can design a watering system for you that is easy and quick to install . . . that costs less than metal pipe and lasts *years* longer . . . that is trouble-free because Carlton Rigid Plastic Pipe is *guaranteed* against rot, rust and electrolytic corrosion. Each installation is *individually-designed* to fit your layout and watering problems.

Ask your Carlton Jobber for the complete story . . . or SEND IN THE COUPON BELOW TODAY!

INSIST on THE PIPE WITH THE STRIPE
for a **PERMANENT** installation

CARLON PRODUCTS CORPORATION

10225 MEECH AVE., CLEVELAND 5, OHIO
WORLD'S LARGEST MANUFACTURER OF PLASTIC PIPE

Engineering Department GC-9
CARLON PRODUCTS CORPORATION
10225 Meech Ave., Cleveland 5, Ohio
 Please have a Carlton Sprinkling Engineer call.
 Please estimate costs of watering system for attached layout or topographic map.

Name _____

Title _____

Address _____

City _____ State _____

Woodland GC, Auburndale, Mass.; Wentworth Hall, Jackson, N. H.; Oakmont, Glendale, Calif.; and Memorial and Franconia courses at Springfield, Mass. . . . His widow, three sons and a daughter survive.

Edward J. Silva goes as supt. to Del Paso CC, Sacramento, Calif. . . . He comes from Silverado CC, Napa, Calif. . . . Del Paso is host to Women's Amateur this month . . . Ed was asst. to Supt. Jim Richards at Del Paso in 1935 . . . Ed's brothers Andy (at Tracy) and Leroy (at Modesto) are well known among California pros . . . Bob Blake now mgr., San Diego Municipal, succeeding Fred Maheu who is mgr. at recently opened Torrey Pines in San Diego dist. . . . Merl Lint is pro at Flying Hills in San Diego dist.

Brea, Calif., City Council acquiring land for 9-hole course . . . R. P. Duke now pro at Guymon, Okla., muni course . . . Seaview GC, Absecon, N. J., opens new 9 designed by Bill and Dave Gordon and built by Supt. Warren Bidwell . . . This gives Seaview 36 holes.

New course at Westover Air Force Base, Holyoke, Mass., opened . . . Rolling Fields GC, near New Kensington, Pa., owned by Mervin, Wilbur and Donald Hankey, is opened . . . John Chernega is pro of the 9-hole semi-private course . . . Earl Fry, veteran pro of the Alameda (Calif.) muni course has been named gen. mgr. of the city's public courses . . . Fry became the Alameda pro in 1927.

John Dietrick and Arthur Hedglin open their 9-hole Pine Grove course near Grove City, Mich. . . . Bob Johnson to Pines Hotel course, South Fallsburg, N. Y. as pro . . . Philadelphia CC, after 67 years at Bala, Pa., moves to new clubhouse at Spring Mill.

Stanton GC, 9-hole course and last private one within city limits of Pittsburgh, Pa., sold its 45 acres to subdividers . . . Play will continue on a few holes of the course for the rest of the summer . . . Plan to build new 9-hole course at New Port Richey, Fla. . . . Extensive work in landscaping, new greens and tees on the two courses of East Lake CC, Atlanta.

Gaston CC, Gastonia, N. C., sells its old property with 9-hole course and will vacate Jan. 1, 1959 to move to new 18-hole spot it's building . . . Present ground will be used for business and residential sites . . . Springfield Township, Montgomery County, Pa., to buy Flourton (Pa.) 9-hole course.

Key West (Fla.) City Commissioner Louis Carbonell, recently said: "I never played golf in my life but I believe a course is a city's No. 2 tourist attraction, second only to its beach. I sincerely believe that if we'd had a nice golf course. Pres. Eisenhower would have come here instead of to Augusta, Ga., last winter."

Jack Bell in Miami (Fla.) Herald says "Dade County has 4½ public golf courses: Miami Springs, Biltmore, Coral Gables (9 holes), Bayshore and Normandy Shores with thousands

upon thousands of visitors begging for places to play."

Sullivan County (N.Y.) Catskill Mountain vacation area to have 3 new courses added to present three 18-hole and fifteen 9-hole courses . . . Most of the larger hotels in the area have own courses . . . In driving contest at Churchill Valley CC during Ladies PGA championship Wiffie Smith belted a shot 310 yards . . . Mickey Wright got second place with a 280 yard whack.

Ben Toski going to the King's Bay club south of Miami, Fla., as pro when it is put into play early next year . . . Women's Western Golf Assn. and women of host club did swell job on program of recent WPGA Amateur championship at Omaha CC . . . And on the program deals, not many do any better for smaller tournaments than Mike Serino, pro at Fort Jackson (S.C.) GC, did on program for the 1957 South Carolina PGA championship played at the Ft. Jackson club . . . The program sold for 25 cents and entitled holder to 4 days admission to the tournament.

Employees of Westinghouse Air Brake Co. doing considerable work in building their own 18-hole course, Willowbrook CC, near Pittsburgh, Pa. Expect to have course in play in 1959 . . . Wm. F. Mitchell, golf architect of North Sutton, N. H., recently completed second 9 for Mount Pleasant CC, Boylston, Mass. . . . First 9 of Otterkill G&CC, Burnside, N. Y., that Mitchell designed and built, now in play.

Bill Mitchell opens first 9 of his own course, Kearsarge Valley CC at North Sutton, N. H. . . . Bill always wanted a course of his own as a showcase and training ground and "lab" for his men . . . This one has three sets of tees giving distances of 3,500, 3,235 and 2,880 yds. . . . He expects to begin construction of the second 9 next year.

Useful program for Great Lakes Regional conference for club managers at Michigan State university, East Lansing, Sept. 9-10, sponsored by Michigan chapter, Club Managers Assn., CMAA and Michigan State U . . . Charles Bangs, mgr., Bloomfield Hills (Mich.) CC, will talk on "Problems Encountered in the New Job at Country Club X." . . . Paradise Valley CC, 18-hole course surrounded by residential development at Casper, Wyo., to have first 9 open this month . . . Among eight persons associated in project is Tommy Sanderson, Casper CC pro, and the dean of Wyoming pros . . . Tommy started in Wyoming as pro at Sheridan CC in 1933.

Edward Lyon, for the past 10 years mgr., Elmira (N. Y.) CC, has been appointed executive sec., Club Managers' Assn. of America, with headquarters at 1028 Connecticut ave., N. W., Washington, D. C. . . . Lyon graduated from Cornell in 1938 and was in the army 1941-1945.

Tom Legrand, formerly supt., Holyoke (Mass.) CC now is supt. Hammond Acres Club, Inc., RFD, Williamsburg, Mass. . . . Dave Dillon, pro at Woodbridge CC, Lodi, Calif., says club has come a long way in 25

(Continued on page 82)

GOLF TROPHIES and PRIZES

HIGHEST QUALITY!
LOWEST PRICES!!

• • •

**FAST
SERVICE**



No. 900-29-5
All Sunray Trophy.
Walnut Base.
Height 11" . . . \$13.00

HAND ENGRAVING ONLY 6¢ PER LETTER

Manufacturers of "Dubbin' Doug"

WRITE FOR FREE 1957 CATALOG

THE TROPHY AND MEDAL SHOP

Dept. G-9
Chicago 3, Illinois

10 S. Wabash Avenue
Central 6-5018

HOW TO IMPROVE YOUR GAME

- See your pro
- Get more practice with

BAG-SHAG

BALL RETRIEVER

Takes the "stoop and scoop" out of practice sessions. Lasts for years, costs only \$15.00 at your pro or sports shop. If not available in your area, write us.

IDEAL GIFT
FOR GOLFERS!



MADEWELL PRODUCTS, INCORPORATED

3129 EAST 7TH STREET • OAKLAND 1, CALIFORNIA 3

CONTENTS

<i>Swinging Around Golf</i>	Herb Graffis	3
<i>Assessor Hedges on Tax Relief</i>	Robert E. Hanna	19
<i>Caddie Camp</i>	J. L. (Jack) Grimes	21
<i>Profitable Reasons for Pushing Xmas Sales</i>	Joe Graffis	24
<i>Steve Blatnak Salvages It</i>	Joe Doan	30
<i>Protection from Winterkill</i>	James R. Watson	33
<i>Over the Pro Shop Counter</i>		36
<i>Book Reviews</i>		37
<i>Tucker Tournament</i>		38
<i>Complete Earth Moving at Burbank</i>	Chuck Curtis	41
<i>Bluegrass Seeding Operation</i>	O. J. Noer	46
<i>Grau's Answers to Turfgrass Questions</i>		48
<i>Manufacturing News</i>		66

Swinging Around Golf

(Continued from page 65)

years from time when clubhouse was an old one-car garage to Sept. 1 when its \$150,000 clubhouse and swimming pool were ready . . . Royal Canadian Golf Assn. says Canadian National Golf Day this year was biggest the RCGA has run . . . Previous high was in 1955.

Members of Golf Course Supts.' Assn. of New England invited by Charles Peirson, green chmn., and John Kealty, supt., to play the Country Club of Brookline, Mass., as it will be for National Amateur . . . Crystal (Mich.) GC, Joe Nodus, owner and operator, is building new clubhouse . . . Nodus has had the club 10 years . . . Frank J. Stenger from Whippoorwill CC (NY met dist.) to post as gen. mgr., Putnam CC, Mahopac, N. Y.

Lawson Little who compiled a record probably not to be beaten, by winning the U. S. and British Amateur championships of 1934 and 1935, and followed up by winning the 1940 U. S. Open, is recovering from a heart attack suffered at Pebble Beach where he lives . . . Charles Zweiner from pro job at Anoka (Minn.) CC to be pro at University of Iowa course . . . Zweiner played varsity golf at University of Minnesota under Les Bolstad.

Dub Bowie to be pro at Belleview G&CC, Franklin, La., when this new club opens this month . . . Dallas, Tex., building its 4th public course, East Tenison . . . Texas isn't able to compete with many other states in top character of public golf courses but maybe this new one will be a bid for distinction . . . Leo O'Grady out as pro at PGA National Course, Dunedin, Fla. . . O'Grady leased the range down the street from the PGA course, will operate that this winter and go to northern club as pro next spring.

Edward Patrick (Bill) Cody, 72 long a golf writer for St. Petersburg (Fla.) Times and

an avid golfer and golf promoter, died Aug. 14 at St. Anthony's hospital, St. Petersburg, after 3 months hospitalization . . . Cody, a native of Salem, Mass., came to Florida during the boom in 1924 . . . He and Mrs. Cody were widely known among golfers . . . Bill always was a quick man for helping pros who were out of luck and out of money . . . He is survived by his widow and a daughter.

Fred Wood, 50-year-old Vancouver, B. C., pro, won the first National Senior Open in a sudden-death play-off with Gene Sarazen, after tying at 270 over Spokane's Esmeralda muni course . . . Wood holed a 15-footer for a par 4 on the first extra hole . . . Gene missed a 3½ foot tying putt . . . Wood got \$2000 and Gene got \$1,400 put up by Spokane's Athletic Round Table which put up \$12,500 for the event which it plans to hold annually . . . George Howard, Seattle, was elected pres., American Senior Golf Assn. which will promote a national senior open annually.

Robert Crandall, for several years prior to World War II, pres., Burke Golf Co., and then widely known in golf business, died recently in his home at Newark, O. . . . He disposed of his interests in Burke about 15 years ago . . . Bruce Herd's 20th anniversary as pro at Flossmoor (Ill.) CC celebrated by big golf, dinner and party calendar Aug. 17 . . . Bagpipe band played at the dinner . . . Club members gave Bruce a very pretty check and presented Mrs. Herd with a beautiful gift . . . Charlie Bassler, Rolling Road CC (Washington, D. C.) pro, won an all-expense-paid trip to Miller High Life Open at Milwaukee by playing 20 rounds in district's PGA competitions with an average of 71.6 . . . Competition was sponsored by Bill Gibson, Washington distributor of Miller High Life . . . Sam Carmichael, son of Don, won Chicago District Golf Assn. championship with 292 over testing Thorngate CC course.