



Druid Hills' new "Golfers' Pavilion" presents a delightful and welcoming sight as the weary golfers come off the 18th — and it's perfectly appointed inside.

New Golfers' Pavilion Is "Club of Progress" Feature

DRUID HILLS GC, Atlanta, Ga., recently has opened its "golfers' pavilion", the latest feature of an improvement and modernizing program which started in 1949. The pavilion which is virtually a golfers' clubhouse completed a rebuilding schedule that has given Druid Hills one of the finest country club plants in the nation and which has set a pattern worthy of inspection and study by other excellent clubs that have found their facilities inadequate for today's demands and usage.

The story of the first stage of the Druid Hills clubhouse modernization plan which was completed in 1949 has been told in various magazine articles by Armand C. Chapeau, Druid Hills gen. mgr., and was instrumental in crystallizing improvement

programs of other fine country clubs.

The favorable effect of the first stage of the program, on the membership and operating situations, was so emphatic the plan was made comprehensive under a "Club of Progress" policy.

Each phase of the club's operations has benefited on a sound business basis. Charlie Miller's new pro shop in the golfers' pavilion is an outstanding example of how highly attractive and practical pro shop facilities score with members.

Steps of "Club of Progress" Plan

After the initial program the next step was taken in 1952.

With the guidance of Pres. W. J. Cordes and other officers of the Club an addition

was provided on the swimming pool side of the main clubhouse.

This addition, planned by Bodin & Lamberon, Architects, provided an adequate and attractive powder room with the entrance off the Main Lobby, Ladies Locker-Room for swimmers only, and a Boy's Locker and Shower Room for the same activity. This addition was completed in May 1952 at an approximate cost of \$35,000.

The officers, knowing the club is a family type, realized that most housewives are not content to live in a home very long without a change of decorations. In line with this thinking a program of renovation of the interior was approved by the Directors.

Under this program during 1952 and 1953, at an approximate cost of \$15,000 the lounge, lobby, dining room, main ball-room and men's grill underwent a face-lifting. Walls and woodwork in all areas except the dining room were repainted in attractive colors with contrasting draperies. An attractive design in wall paper to blend with a mural was used in the dining room and appointed by wrought iron

sconce holding long tapered candles. New carpeting was laid in the Main Lobby and Lounge and new furniture was provided for the Men's Grill.

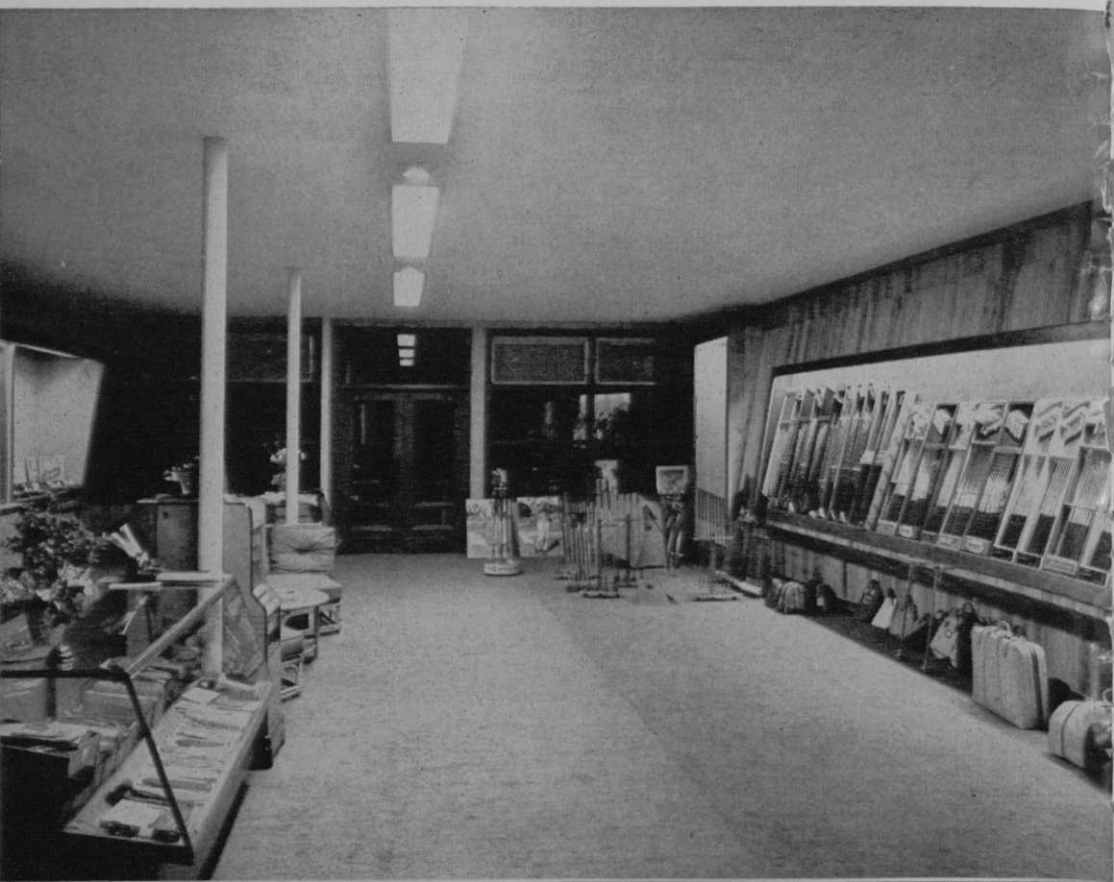
The delicious meals prepared under Chapeau's supervision were further enhanced by the installation of air conditioning units in the terrace dining room and two private dining rooms.

The year 1953 gave the club another well qualified, well liked and progressive president in Clyde C. Fowler ably assisted by other officers and directors.

The officers and manager realized that any club should provide equal facilities for all activities in order to maintain harmony within the club. This line of thought prompted them to turn their attention to the golfing and dancing enthusiast. A Building Committee composed of Chmn. Herman Dixon, Frank D. Nichols, Dene Christopher, and the late Dr. T. R. Staton was appointed to investigate the possibilities of expanding the open dance terrace adjoining the terrace dining room and overlooking the golf course; also the construction of a golfers pavilion.

This Committee selected David S. Cut-

Druid Hills' new pro shop is pronounced by experts to be the top job of lighting, and in every other respect it is designed and built for merchandising appeal and service as well as for operating efficiency.





YANK PROS WIN HOPKINS TROPHY THIRD CONSECUTIVE YEAR

After being held to a tie in first day singles U. S. PGA team beats Canadian PGA, 42½ to 20½. Canadians had Bobby Locke as added member. Jerry Barber beat Bobby for 3 points in singles. Barber was U. S. leading pro scorer with 10½ points. The U. S. PGA team, L to R: Ted Kroll, Jerry Barber, Walter Burkemo (capt.), John Jay Hopkins (donor of the trophy and pres., International Golf Assn.), Marty Furgol, Chandler Harper, Dave Douglas and Ed Oliver.

tino, Jr., Architect and member of the Club to work with them in formulating plans for this particular expansion.

On with the Dance

A decision was reached to proceed immediately with the enlargement of the open dance terrace in order to complete it for the forthcoming summer months. The plans provided for an increase of three times the original area of the dance floor, exclusive of dining areas around two sides of a rectangle, and an elevated orchestra stand. The original pattern of terrazzo was continued on the dancing area only.

The elevated orchestra stand was surrounded by planting areas of field stone. Provisions were made for a removable canvas roof and three sides for the stand so that the view of the golf course from the terrace dining room would not be obstructed during the winter months. This phase of the program was completed in August, 1953 at a cost of approximately \$24,600.

New Quarters for Golfers

As soon as plans for the terrace were completed by the architect, he was authorized to proceed with plans for the "Golfers Pavilion." This building has to primarily serve those members interested in golf. An overall plan was made pro-

viding a two story structure of typical field stone and redwood exterior with a most unusual cantilevered, exterior stair of reinforced concrete.

The building was located on a terrain which permitted both first and second floors to be at different ground levels.

The lower floor consists of a Men's Locker-Room and with shower and toilet facilities, a shoe cleaning and storage room and a heater room. A deep pile Wilton carpet by Alexander Holmes of Philadelphia and benches were provided in the aisles between approximately 340 lockers.

All showers with adjoining dressing compartments and toilet areas have light buff ceramic tile, trimmed in medium brown with metal toilet partitions. Walls and ceiling of the Locker Room proper are plastered. Ceilings are painted off white and walls pastel green. The two entrances to this locker-room open on a craborchard flagstone terrace facing the eighteenth green.

The upper floor consists of a cocktail lounge complete with Bar, Kitchen, and Restrooms; Pro Shop complete with display, Office, Club cleaning, repair and storage.

One will find the cocktail lounge and pro
(Continued on Page 76)

GOLF TROPHIES

PRIZES and NOVELTIES

FREE

with every order
of \$10.00 or more
a deck of the famous
MONTEBELLO
PLAYING CARDS
with golf motif on
each card.

Write for free circ-
ular on Golf Trophies,
Plaques, Novelties
and Awards. Imme-
diate delivery.



Ht.	Price
J15C 15 1/2"	12.00
J15B 17"	13.00
J15A 18 1/2"	14.00

Ht.	Price
Z1 6"	3.50
Z1A 7 3/4"	5.00
Z1B 9 1/2"	6.50

HAND ENGRAVING ONLY 6c PER LETTER

THE TROPHY AND MEDAL SHOP

10 South Wabash Avenue

Chicago 3

Central 6-5018

The Best of All is

WESTALL RUBBER FLOORING

- PROTECTS CLUBHOUSE FLOORS FOR YEARS!
- LONGER-WEARING, TOUGH, FIRMI
- SO SMOOTH, SAFE AND EASY TO CLEAN!
- NO CEMENTING TO UNDERFLOOR!
- DOES NOT BUCKLE OR CRAWL!
- SMART APPEARANCE!
- CHOICE OF COLORS: GREEN,
SAND AND TERRA-COTTA!
- COMES IN ROLLS UP TO 24 FT. LENGTHS, 5/16
IN. THICKNESS, AND FOLLOWING WIDTHS: 30",
36", 40", 48".
- PLAIN BOTTOM OR MOLDED. ODD SIZES AND
STYLES CAN BE PRODUCED ON SPECIAL ORDER.

Write for Samples and Details:

HENRY WESTALL COMPANY

944-960 Merrimon Ave., Asheville, N. C.

rain, no water was standing; on untreated greens and fairways water was plainly standing. We especially noticed the difference in grass growth and lushness, both on the surface and in plugs taken from various greens, between old greens and new, treated greens."

This evidence was recorded photographically, as I am skeptical enough myself by nature to know that golf course superintendents are a skeptical breed. We have to be. There is little room in our operations for casual, do-it-and-hope use of either time or money.

We have now definitely decided to use only conditioner-treated soil in topdressing the remaining old greens. I am sure that in a season or two the condition of these greens will be vastly improved. Since our own project was completed, we have been visited by as many as 50 golf course superintendents at one session. Among those who, I understand, are now using conditioner on their courses are Henry Land, president of the Northwest Turf Assn. at the Tacoma (Wash.) CC, and Glen Proctor, secretary of the association, at the Ranier G&CC, in Seattle.

I repeat that this report is not an attempt to "prescribe" conditioners, on a general basis, for any course. I certainly realize the great regional diversification of problems which confront golf course superintendents.

But it is time that a report of the practical application of these materials is made available to the many superintendents who try to keep abreast of new developments and techniques. It is time that the much-discussed "expense" factor is brought into proper perspective. With the background of the problems inherent in management of the Forest Hills course, and with time now elapsed for putting into the record the scientifically and practically measurable results of the use of a conditioner in our case, I feel that this report will be useful to members of our profession.

It is in that spirit that this report has been made.

NEW GOLFERS PAVILION

(Continued from Page 50)

display rather unusual and unique in design in the use of a combination of materials and finish.

The cocktail lounge has three sides facing the golf course and are composed entirely of stationary and vented glass extending from convector height to the ceil-



SAY IT IN BRONZE!

SPECIAL ORDER SOLID CAST BRONZE

You are invited to submit rough sketches of your own ideas. We will appreciate the opportunity of assisting you in developing your sketch and quote on your exact requirements at no charge.

Write Dept. 7-G

HOUSE OF WILLIAMS

37 South Wabash Ave.
Chicago 3, Illinois

ing; thus allowing full vision of a large portion of the beautiful course. The fourth side has a bar of used brick and redwood. The floor is of craborchard flagstone and the plastered ceiling is dotted with recessed spotlights. Interior woodwork of antiqued redwood blends nicely with the field stone pilons that protrude into the Lounge at the two entrances.

Directly behind the bar and connected thereto is a modern kitchen, equipped for short orders and furnished with stainless steel fixtures. These units combine to form one large recreational unit, completely segregated from the Pro Shop with its auxiliary units.

The Pro Shop, located next to the kitchen, has two opposite exterior walls of glass which permits a clear view to both the practice green and the eighteenth green. Against the remaining walls are display cases to accommodate all types of merchandise arranged in accordance with suggestions by Druid Hills pro Charlie Miller. This room has a Green deep pile Rayon carpet made by E. T. Barwick Mills of Chamlee, Ga.

This is a most interesting room with its walls and cases of North Georgia Birch trimmed in redwood. Troffer and eyeball lights are recessed in an acoustical ceiling.

Ample space is provided for a customer to swing any club without danger to the fixtures.

Adjoining this shop on one side and connected, is the Pro's Office with ample storage, a cleaning room (with a Fred Haas machine), repair room and club storage room. These utility rooms are arranged in order to permit the caddies from the 18th green to pass the clubs through a copper-clad dutch door into the cleaning room. A similar exterior door is provided in the

club storage near the practice green and first green. The storage room has steel bins made by Berger Mfg. Co.

This two story structure, approximately 60 ft. by 112 ft. erected at a cost of \$132,892, also provides a suspended gallery at the second floor level extending from the Lounge entrance along the Pro Shop unit, facing the 18th green.

As work progressed on the golfers pavilion, another sorely needed facility began to take form. Due to the overall layout of the Club, the Caddie House was located on the edge of the parking area in rear of the main Clubhouse.

This so-called Caddie House was composed of two separate dilapidated wooden structure. One housed the caddie-master and 15 ft. away was the other which housed the caddies. Time had arrived to eliminate these eyesores and plans were prepared for a fire resisting structure to consolidate both old structures. This new caddie house was placed on the site of the old caddie-master's Office at a cost of \$6,465.

Masterson, Muny Golf Director, Ingenious

P. M. (Pete) Masterson, Seattle, Wash., Director of Municipal Golf, is one of golf's busiest inventors. Pete invented a cushion cup for fitting over sprinkler heads, and is bringing out a theft-proof ball washer.

One of Masterson's ideas which got him a special award of \$250 from the Seattle City Council, as one of its awards under the council's "Suggestion Award" program is a device for injecting solid in semi-liquid form under 2000 lbs. pressure to fill depressions in turf.

The device saved the city \$8,000 on its muny courses and has been used with success and saving at other courses.