

greens, tees and fairways. If it is a system that calls for hose, all outlets should be under the surface in a receptacle that could hold all hose required and covered over with a cover so that equipment can be driven over it if necessary.

If we should happen to acquire all these features there will still be many grumps and kicks. The rough will be too high. Some days the greens will be too slippery or the workmen did not get out of the way in time and bothered me so I muffed a shot. The perfect course, eh? If a course could be perfect the player wouldn't have anything to kick but himself and he'd never consider that playing under perfect conditions.

### Nut Grass Eradication With Methyl Bromide

Nut grass is a bad weed on many golf courses and other turf areas in the South. It is not easily killed because of the underground bulblet. Some have used heavy doses of ammonium sulfate with fair success.

A method for killing nut grass with methyl bromide fumigant devised by O. A. Leonard of the Mississippi Agricultural Experiment Station is outlined in Down to Earth, Volume 6, No. 1 (Summer 1950)



### PHILLIPS GOLF SPIKES

*Adjustable*

For Easier Walking — Firmer Grip. Bearing at extreme outer edge.  $\frac{7}{8}$  Disc Area.

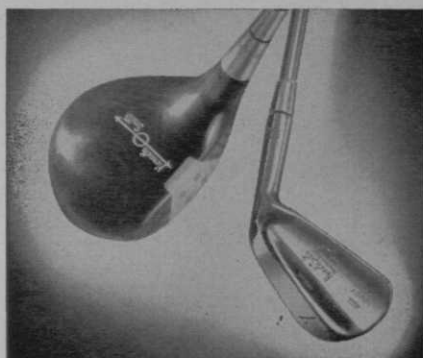
### PHILLIPS

### Golf Spike WRENCH

PAT. APP. FOR



F. C. PHILLIPS, INC.  
STOUGHTON, MASS.



## Better Clubs Make a Better Golfer

Seventy per cent of men playing Kenneth Smith clubs shoot in the 70s. The national average — all makes of clubs — is only  $2\frac{1}{2}\%$  (according to an impartial, national survey). The reason is easy to discover — Kenneth Smith clubs are handmade to fit your customer's measurements, scientifically matched and all clubs in a set identically swing-balanced. No other clubs are so matched and so balanced.

**Pros: Write for new booklet that helps you sell Kenneth Smith clubs.**

Give Your Members Better Service with

## Ken SHOP SUPPLIES

Golf Club Lacquer

Form-a-Coat

Grip Conditioner

Adhesive

Buffing Supplies

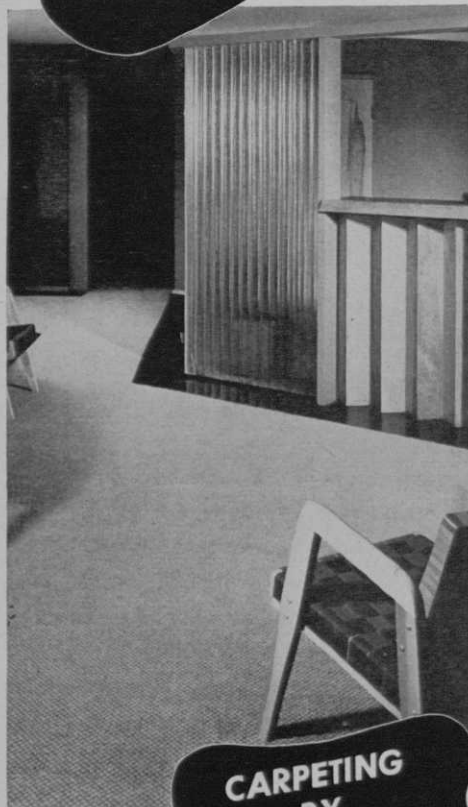
Write for handy Supply Order Form

## Kenneth Smith GOLF CLUBS

*Hand made to fit You*

BOX 41, KANSAS CITY 10, MO.

*Made to order*  
FOR  
**GOLF CLUBS**



**CARPETING  
BY  
KLEARFLAX**

Tightly woven  
of long-wearing  
virgin flax, scuff-  
proof, beautiful in any room. Reversible, spike-  
resisting, moth-proof, practically burn-proof,  
and easy to clean. Adds distinction to any  
interior. For address of nearest dealer write:

**KLEARFLAX** CARPETS  
AND RUGS, DEPARTMENT G.,  
DULUTH 7, MINNESOTA

page 13. The methyl bromide kills all vegetation. Its use is feasible and desirable where one of the newer finer leaved selections of bermuda grass is to be planted on putting greens.

The recommended procedure is to work the soil to a depth of 10 inches because best results are obtained when the soil is porous. A support for the gas-proof cover is constructed lengthwise of the area, by placing 2 x 4 timbers in boxes. (Sisal Kraft paper obtainable from any building supply firm makes a satisfactory cover.) The edges are sealed by weighting down with soil. Methyl bromide is released through a piece of plastic tubing and introduced into an evaporating pan placed under the tent-like cover.

In winter time tests, with the soil wet and at 49° F, methyl bromide was applied at the rate of one, two and four pounds per 100 square feet. The area remained covered for 65 hours. The one pound rate proved adequate for complete eradication of nut grass where the soil had been spaded. Even four pounds was almost completely ineffective when applied to undisturbed soil.

In the spring, flower beds were fumigated after rototilling. Some beds were fumigated later than others, and after several heavy rains. Complete control of nut

## **NORTHERN GOLF BALL CO.**

3441 N. Claremont Ave.

Chicago 18, Ill.

Distributor of

### **"THE TURF KING"**

**GENUINE TAMPICO BALL  
HITTING & MAT BRUSH**

Designed for use at all  
tee-off points on Golf  
Courses, Schools or  
Driving Ranges.

Ideal for Wood or Iron Play

also

The

### **"CALIFORNIA YELLO JACKET"**

Driving Range

and

Miniature Course

Golf Ball

Permanent Color

"CLEAR thru the COVER"

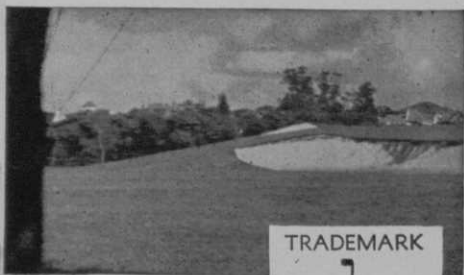
grass was obtained with  $\frac{3}{4}$  pounds methyl bromide per 100 square feet, in the bed fumigated immediately after roto-tilling. Control was not complete in beds fumigated after rains which caused the soil to settle.

In July an experiment was conducted to compare the exposure period and the rate of application. Methyl bromide was used at  $\frac{1}{4}$ ,  $\frac{1}{2}$  and 1 pound per 100 square feet. The soil remained covered for 24 to 48 hours. Control was complete with  $\frac{1}{2}$  pound for 48 hours and with 1 pound for either 24 or 48 hours.

Other tests showed that spading the soil is not necessary for good control when subsoil moisture is low.

Generally speaking, it was suggested that the soil be freshly plowed, roto-tilled or spaded; that 1 pound of gas be released per 100 square feet and exposed 24 hours in summer and 48 hours in winter, with soil temperature above 50° F. It is safe to plant or seed two to three days after the cover is removed.

**Editor's Note:** Methyl bromide is being used in Oklahoma and Texas to kill bermuda grass in the aprons and around the edges of bent grass greens. The rate is 1 pound to 100 square feet with an exposure time of 24 hours. Grass is seeded 24 hours later.



# DUBOW

**Symbol of Golf Club Excellence**

JOCK HUTCHISON and BETTY HICKS  
PRECISION-BUILT GOLF CLUBS  
GRADUATED GOOSE-NECK IRONS  
LAMINATED and PERSIMMON WOODS  
COMPLETELY NEW

and  
DISTINCTIVELY STYLED  
for  
MEN and WOMEN GOLFERS

also  
**Makers of the New  
DUBOW H. C. — SUPER 803 COVER  
GOLF BALL**

The finest Golf Ball that can be made  
Write for descriptive folder and price list  
**J. A. DUBOW SPORTING GOODS CORP.**  
1905-13 Milwaukee Ave. Chicago 4, Ill.

## THE LIGHTWEIGHT BALANCED GOLF BAG FOR 1951

**OVER 500,000 IN USE**  
The most popular bag ever made



**NEW  
OVAL  
SHAPE**



**BALANCED**

### 15 CLUB CAPACITY STANDARD MODEL

The one and only full size golf bag that is lightweight and balanced for easy carrying. Large zipper pocket. Adjustable padded shoulder strap. Made of best quality duck and materials throughout. COLOR — TAN ONLY. PRICE — \$3.60 EACH, F.O.B. CHICAGO. MINIMUM SHIPMENTS ONE-HALF DOZEN.

For the golfers who object to excess weight. A cart is unnecessary



**HOLDS  
9 CLUBS**

Each in a  
separate  
pocket

**BALANCED**

### SLIM-JIM MODEL

The perfect bag for the golfer who plays with nine clubs. Zipper ball pocket. Adjustable padded shoulder strap. Made of best quality duck and materials throughout. COLOR — TAN ONLY. PRICE — \$3.90 EACH, F.O.B. CHICAGO. MINIMUM SHIPMENTS ONE-HALF DOZEN.

**ORDER TODAY FROM  
BALANCED GOLF BAG**

A Division of M-K Enterprises Inc.  
1401 W. North Ave. Chicago 22, Ill.