

Driving Ranges AND Miniature Golf Courses

We have a complete stock of
**GOLF BALLS — CLUBS
TEES — MATS — PUTTERS**



Write for prices

EASTERN GOLF CO.

244 W. 42nd St., Dept. A, New York 18, N. Y.

Attention!

**GOLF PROFESSIONALS
DRIVING RANGES**
Retrieve practice balls with

**MACDONALD
BALSHAG**

U. S. PATENTS 197926

3027346 3201179

Price **\$2.25**

F.O.B. SAN DIEGO

ORDER FROM
IAN MACDONALD
1961, and Dist. 1
3546 COOPER STREET
SAN DIEGO 4
CALIFORNIA



★ **Increase your
PROFITS**

Electro-Beam
FULLY AUTOMATIC
GOLF TEE

For complete information write:
GOLF ENTERPRISES, Inc.
914 Arctic Bldg., Seattle 4, Wash.

★ DRIVING RANGES !!! ★

Use Royal's Aluminum Range Club
NEW — Sensational — Dynamic

one-piece
head



one-piece
grip

LONGER LIFE AND NO REPAIRS

Profits increase immediately
Astounding Value To Range Owners
For complete information write

ROYAL GOLF CLUB COMPANY

6411 No. Oakley Ave.

Chicago 45, Ill.

NEWS from the MANUFACTURERS

Persimmon Head Supply Abundant

Persimmon golf club head production is at an all time peak according to leading manufacturers. Persimmon head producers at Memphis, Tenn., are now receiving hundreds of thousands of feet of the "ebony wood" annually. The government estimates the supply in sight will last up to 100 years at the present rate of consumption.

Pro Golf's New Trailer



New all aluminum job C. L. Horning, pres., Pro Golf Sales, Fond Du Lac, Wis., will use to call on professionals during Southern tour. Interior is arranged for traveling display of Pro Golf equipment.

Freeze-Proof Hydrant



A new non-freezing yard hydrant for use on golf courses is being offered by Strataflo Products, Inc., 4939 S. Lafayette St., Ft. Wayne, Ind. The valve, located below the frost

line, uses a standard washer which may be replaced by removing one screw. Entire unit is corrosion-resistant, vertical lift on the valve avoids turning action on valve seat and large square thread area on handle provides smooth operation. Hydrant is available with riser pipe in 3 to 6 ft. lengths below ground to meet depth-of-frost conditions in all localities.

**BRAND NEW
DRIVING RANGE BALLS**

6 coats of paint, one stripe,
any color, per doz.

\$2.85

**GOLF PROFESSIONALS DRIVING RANGE
EQUIPMENT COMPANY**

11000 S. Green St.

Chicago 43, Ill.

Portable Electric Lamp

A new portable electric hand lamp with a built-in charger is now being manufactured to meet the varying requirements for portable light by night maintenance men of golf courses. It is unusually well made for long life. The principal features include a spill-proof rechargeable battery with an acid proof plastic case that does not leak regardless of position in which the lamp is held, plus a charge indicator that eliminates all guesswork on the con-



dition of the battery. A built-in charger that plugs into any 110-volt, A.C. makes recharging easy and convenient. Known as Big Beam model 312, the lamp is manufactured by the U-C Lite Mfg. Co., 1050 W. Hubbard Street, Chicago, Ill.

MINIATURE GOLF COURSES

Save Money With Royal's Putters
"Largest producer of miniature putters"
Wholesale and Retail

For complete information write

ROYAL GOLF CLUB COMPANY

6411 No. Oakley Ave.

Chicago 45, Ill.

Spalding Golf Ball Gift Box

To promote the sale of golf balls for Christmas gift giving, Spalding is offering



the Dot and Top-Flite in the attractive box shown above.

Designed with a gold-covered box and a seasonal wrapper, they're the answer to many a member looking for suggestions for the holiday.

Scoggins Announces 1949 Golf Ball Line

The Howard Scoggins Golf Co. of Dunedin, Fla., has announced its 1949 line of golf balls, manufactured by the Campbell Mfg. Co., Lansing, Canada. The new ball introduced to this country in early 1948 has received a wide degree of acceptance. In addition to following the present trend of concentrating on compression for distance, the new line of balls features a

**When you make a poor
shot SMILE and change
to PARK ALL WEATHER
GRIPS. Order Improved
1948 Grips today.**

PARK "ALL-WEATHER" GRIP — Greatest Grip in Golf!

Mail this coupon to any of your suppliers or
direct to:

L. A. Processing Company
801 Milford Street
Glendale 3, California

Please ship me _____ All Weather Grips
and _____ sets shaft clamps, also installa-
tion instructions.

Name _____

Address _____

City _____ State _____

(Please print plainly)

Same Day Shipment!
GRASS SEED
of "Known Quality"

Tested for Purity and Germination
 Write for new fall price list on seeds, fertilizers, and golf course supplies.

Stump & Walter

132 Church St. Dept. G New York 8, N. Y.



GOLF FLAGS

FAST COLOR — LONG LASTING

- Sewed on numerals • canvas heading and 1" hem prevents fraying • any color combination

PRICES:

Incoming or outgoing flags, 12" x 18", \$4.05 set of 9. Checkered direction flags, 12" x 18", \$1.11 each.

Specify color combinations desired. Order now!

The WAGNER AWNING & Mfg. Co.

2658 SCRANTON ROAD • CLEVELAND 1, OHIO

WAGNER
 SPECIALTY
 PRODUCTS

vulcanized cover of extreme thinness resulting in increased "feel" and extra distance. For 1949 the Campbell family of balls consists of four brands—the Star (designed for distance), the Campbell T/20, carrying an unconditional guarantee against cutting for 72 holes; the Blue Goose and the Plus Four. In line with the Scoggins policy, all balls will be sold through Professionals only.

**Chlordane Gives Rapid Control
 of Turf Insects**

During the 1947 season both federal and state agricultural research workers reported favorably on a new chemical, chlordane, which promises greenkeepers excellent control of many turf insects. This new quick-acting organic insecticide readily kills the miniature brown ant, the American lawn ant, wireworms, cutworms, sod webworms, beetle grubs, chinch bugs, white grubs, the garden centipede and many other destructive turf pests. Chlordane has proved to be quicker acting in killing Japanese beetle larvae, for example, than any other available compound including DDT and benzene hexachloride. The chemical does not present any undesirable odor, and it is not harmful to the turf. Any one of several formulations offered by most firms is readily adaptable to the greenkeeper's needs. (An oil concentrate containing 20% chlordane is also offered to control household, industrial and institutional pests.)

Ant Control

For the control of ants, the greenkeeper may treat the individual hills or the turf as a unit. The degree of infestation will determine the method of treatment.

If infestation is spotty and limited primarily to the putting greens, one-fourth of a teaspoonful of 40%-wetttable powder placed on the center of each hill and watered thoroughly into the nest will give a quick and complete kill.

For complete turf treatment it is recommended that a 40% wetttable powder be

For the finest turf
PLANT
HENDERSON FORMULAS

Putting Green Mixture Tee Mixture
 Fairway Mixture Rough Mixture
 Bunker Mixture

Special Mixture made to your own formulas

Write for our special catalog today

PETER HENDERSON & CO.

Dept. 65

35 Cortlandt St., New York 7, N. Y.



HARDWOOD
FLAG
POLES

Made of the finest, kiln dried, second growth, tough White Ash. Tapered from approximately 1" at bottom to 3/4" at top, and fitted with flanged aluminum ferrules to fit standard 1 1/8" cup. Sanded finish with prime coat of lead and oil and finished coat of finest white enamel. Available in 2 or 3 color combinations. Immediate delivery.

Your inquiries and orders will be referred to a nearby distributor.

LEAVITT CORP.

EST. 1895

URBANA, ILL.

Builders of "Knockdown" bleachers for all sports

applied at the rate of six ounces to 1,000 square feet in 75 to 100 gallons of water at a pressure of 100 pounds. The turf should then be watered with 50 to 60 gallons of water per 1,000 square feet and then rolled.

Japanese Beetle Larvae

While DDT properly applied and in sufficient quantities will kill Japanese beetle grubs, often severe damage is rendered before the kill is accomplished. For this reason chlordane should be of special importance on golf courses since its action is very rapid. Used in the spring in sufficient quantities, control is quickly accomplished and a residual control of at least a month may be expected. The chemical should be applied in the form of a 40% wettable powder at the rate of from six ounces to one pound per 1,000 square feet in 100 gallons of water. The degree of infestation and the residual effect desired will dictate the dosage.

Other Pests

For many pests such as chinch bugs, wireworms and cutworms, lesser amounts will give adequate control. Two quarts of a 40% emulsifiable formulation in 100 gallons of water per acre should give good control. If desired, a 5% dust may be applied at the rate of six pounds per 1,000 square feet. Ants will be killed by such an application and a residual control of several weeks will be attained. Lesser amounts may be applied if a residual effect is not required.

Compatibility With Fertilizers

Chlordane may be added to fertilizers. The rate of six pounds of 40% wettable powder per ton of fertilizer would be adequate if the fertilizer were applied, for example, at the rate of 50 pounds per thousand square feet of turf. The amount of the chemical may be varied in terms of the amount of fertilizer being applied. This dosage of chlordane should be increased if a residual action is desired.

R. H. Tractor Wheel SPUDS

quickest to put on or take off. Increase tractor efficiency and cultivate turf that's why more than half the U.S. and Canadian clubs use them. Durable and low priced.

Sample spud and circular on request; advise make of tractor and purpose for which intended.

Immediate shipment. If your Ford or equipment dealer cannot supply, write direct to

R. S. HORNER

Geneva, Ohio

MFR. OF SPUDS, FORD-SON WHEELS, ETC.



A MINNESOTA HIGH LIME PEAT
IT'S GRANULATED

A valuable soil amendment for green dressing mixtures and green construction. Cuts labor costs.

NUTRIA PEAT SALES COMPANY

500 Stinson Blvd.

Minneapolis 13, Minn.

• BENT GRASS •

Stolons and Sod. Washington — Cl — and other recommended strains.

HIRAM F. GODWIN

22346 Grand River Ave., Detroit 19, Mich.



SKINNER

system
of irrigation

... for beautiful turf

Scientifically engineered to guard and improve the grand beauty of your course. Single units or complete systems for any requirement.

The Skinner Irrigation Co.

415 Canal St., Troy, Ohio

"Pioneer and leader in Irrigation for nearly a half century"

America's
Most Popular and Finest
MINIATURE GOLF COURSES
and
GOLF DRIVING RANGES
are **ARLAND**

designed and built.

"We build anywhere in U. S."

SWIMMING POOLS

ARLAND, 444 Brooklyn Ave.
New Hyde Park, N. Y.

*"E-Z-T is a giant step forward . . . in what it does
. . . and in its remarkably low price . . ."

E-Z-T

U. S. PAT. PEND.

the new automatic tee

priced below \$50.

*says: VALLEY STREAM DRIVING RANGE
LONG ISLAND, NEW YORK CITY (from our files)

OSAGE MFG. CO., 60 E. 42 ST., NEW YORK 17

PRIVATE BRAND GOLF BALLS

15 DOZEN MINIMUM ORDER

Write for Prices

BOSTON GOLF BALL CO.
7 MAPLE ST.
Stoneham 80, Mass.

GOLF BALLS & EQUIPMENT

NORTHERN HAS A COMPLETE STOCK OF:

**GOLF BALLS,
CLUBS, MATS,
PUTTERS, TEES,
ETC. FOR DRIVING
RANGE & MINIA-
TURE COURSE**

Write for 1948 Prices

NORTHERN BALL CO.

3441 N. Claremont Ave., Chicago 18, Ill.



Redmond Tees Off Melflex Mat



Jack Redmond, famed trick-shot artist, is shown driving from the latest model Melflex Driving Range Tee Mat. The new mat made of airplane bomber tire fabric features design and construction improvements which the widely travelled Redmond says will add substantially to the safety and convenience of every player. Notice that bomber tire cord fabric material is used at the sides of the mat and the rubberized fabric material is used in the center. The tee mat is manufactured by Melflex Products Co., Inc., 410 South Broadway, Akron 8, Ohio.

Sales Meeting Brings Wilson Representatives Together



One of the luncheon groups at the Wilson Sporting Goods Co. sales meeting includes these golf personalities (clockwise, from six o'clock) George Shaw, west coast representative; W. L. Robb, assistant to the president; Jay Wyatt, special sales representative; J. F. Conway, Boston vice-president; Bob Duvall, Miami manager; Claude Hastings, special sales representative; Mike Behrendt, superintendent of the golf club factory; salesman George Hageman; Joe Wolfe, assistant superintendent of the golf club factory and salesman Walter Crowe.



Matt Kiernan, Spalding assist. vp, shows NY Pro salesmen 1949 golf bag. (L to R) Fred Carlsen, Jimmy Nichols, Bill Shaffer, Kiernan, George Weaver, Bert Purvis and Lyle Thompson.



Earl Jones, Eastern dist. mgr., discusses 1949 irons with middle west pro salesmen. (L to R) Ed Conner, Carey Spicer, Bob McLaren, Gene Gleissner, John Miller and Tom Frainey. Standing (L to R) Rusty Wall, Rube Albaugh, Jones, Tim McGrath and Ted Horvath.

1949 Pro Lines Feature Spalding Sales Meetings

Pro salesmen of A. G. Spalding & Bros., from all over the country, gathered in Chicopee, Mass., weekly from the middle of July until the end of August for a series of factory 'refresher courses' and sales meetings to study and discuss the new 1949 spring and summer lines.

Following a plan inaugurated two years ago, these men were given intense schooling through small groups in every phase of the business. After a complete tour of the plant each group had long informal sessions with executives, department managers and the heads of all subdivisions. The following subjects were presented and discussed: Factory coordination with sales, New ideas from the field, Wood construction, Golf and Tennis, New methods, Research and Testing, Molds and Tooling, Die Making, Processing a New Item Through the Factory, Wood Head Models, and New Line Refinements.

After the salesmen had been given detailed information on Spalding production, the 1949 line was examined and thoroughly discussed. According to Matt Kiernan,

ass't vp in charge of Pro Sales, "The meetings this year were better than any we've ever had. Our men really know how every item in the 1949 line is made."



Spalding's Phila. pro salesmen look at 1949 woods. (L to R) Newt Priestly, Ed Aurin, Amos Williams, dist. mgr., Walter Wood and Harry Welch.



COMPLETE LINE OF GOLF TROPHIES AND AWARDS

SUNRAY LOVING CUP

Comes in beautiful (gold color) with engraving band.
Expert hand engraving 6¢ per letter.

Height 7 1/2"	\$ 8.00	Height 15 1/4"	\$25.50
Height 10"	12.00	Height 18 1/4"	31.50
Height 12 1/4"	17.00	Height 21 1/4"	37.50

A REAL CHAMPION TROPHY

All sunray finish; height 9" \$11.75

Write for free catalog today.

TROPHY & MEDAL SHOP

10 S. WABASH AVE.

CHICAGO 3, ILL.



J. B. McGOVERN

Golf Course Architect

Wynnewood, Pa.

Ardmore 2677

Over thirty years
partner and associ-
ate of the late
Donald J. Ross

Member of the
American Society
of Golf Course
Architects

WILLIAM P. BELL AND SON

GOLF COURSE ARCHITECTS

Member: American Society
of Golf Course Architects

544 Sierra Vista Avenue
Pasadena 10, California

**Design and
Construction**
*of Notable Golf Courses
for 25 years*

C. D. WAGSTAFF & CO.
GLENVIEW, ILL.
Phone Glenview 181

ROBERT TRENT JONES

Member:
American Society of Golf Course Architects

**Golf Course
Architect**

20 Vesey Street
Tel: Rector 2-2258
NEW YORK, N. Y.

All-Purpose Utility Trailer

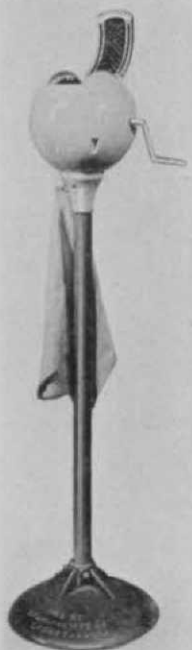
An all-purpose $\frac{1}{2}$ ton utility trailer with exclusive dumping features has been announced by the Mastercraft Trailers, 310 Maple St., Rocky Hill, Conn. This new trailer, weighing 350 lbs., measures 42" x 60" x 12" and has Timken Roller



Bearings, double acting, removable tailgate, safety lock and ball and socket coupler as standard equipment. Thoroughly tested on rough terrain, the trailer meets the needs of greenkeepers and landscape contractors who want a low priced trailer for all 'round use.

Standard Develops New Ball Washer

The Standard Mfg. Co., Box G, Cedar Falls, Iowa, with the cooperation of the Mast Development Co., Davenport, Iowa, have developed a new golf ball washer designed for mass production and resultant economy. The case is made of cast aluminum with a hinged lid and is 7 $\frac{1}{2}$ " in diameter. Any number of balls from one to six, may be cleaned at the same time. A propeller carries the balls from the top to the bottom and from the bottom to the top so that each will be cleaned properly even though the water in the case becomes low. The brushes are made of molded rubber with hundreds of little rubber fingers that massage and clean the ball as it revolves in the case. All brushes are stationary and the only moving part is the plastic propeller which operates on a bearing running through the center of the case.



IN OKLAHOMA
for
GOLF COURSE SUPPLIES

It's
BOB DUNNING
PERSONALIZED SERVICE

271 W. Victoria — Phone 5-7444 TULSA 6, OKLA.

Protective Coating for Concrete

A new long-wearing, abrasion resistant "Oncrete for Concrete" protective coating especially suited for concrete floors and walls of locker rooms, caddie rooms and other indoor and outdoor sports areas, is now being marketed by Lowebo, Inc., 1525 East 53rd St., Chicago 15, Ill.

Cinch, New Liquid Grip



The Chem Products Co., Hartford, Conn., are now distributing CINCH, a new liquid hand preparation which when applied assures an instant grip regardless of moisture from rain or perspiration. Recommended for gripping golf clubs, tennis racquets, etc.,

CINCH is stainless and will not transfer from hands to clothing or food. Tube contains enough for approximately 12 applications. Display container available with initial order of 2 dozen tubes.

Rollosprayer for Small Areas

Dr. Walter S. Lapp, Lansdale, Pa., announces production of a new low pressure, low volume sprayer for use on small areas marketed under the trade name, Rollosprayer.

WILLIAM B. LANGFORD
GOLF COURSE ARCHITECT
Balanced Topographical Design

Member:
American Society of Golf Course Architects
Telephone: KEystone 9-6501

2405 Grace Street, Chicago, Illinois

The Rollosprayer is traction powered, and produces a uniform spray as it is pushed along. Convenient for liquid applications of chemicals on golf greens, its maneuverability and small amount of drift make it suitable for



spraying 2,4-D on areas where trees and shrubbery prohibit the use of larger power equipment. Spray nozzles are the flat fan type. The standard nozzle produces a volume of 15 gallons per acre. By changing nozzles, volumes ranging from 5 to 30 gallons per acre may be obtained. Advantages of the new implement include its convenience and easy operation, small amount of drift and the uniform distribution of materials.

Mr. O's Products has moved into new offices at 1715 West Sixth St., Los Angeles 14, Calif.

CREEPING BENT STOLONS

RICHMOND, VIRGINIA

Cohansey C 7

Arlington C 1

FARMINGTON, IOWA

Congressional C 19

MADISON, WISCONSIN

Arlington C 1

Old Orchard C 52

All fresh virile stock and less than one year old.

Address all inquiries to

Old Orchard Turf Nurseries

P. O. Box 350

R. R. Bond, Prop.

Madison, Wisconsin

THE GREENS ARE THE FOUNDATION OF ALL SUCCESSFUL GOLF COURSES

ALFRED H. TULL
Golf Course Architect

209 E. 49th Street
NEW YORK 17, N. Y.

ROBERT BRUCE HARRIS

Golf Course Architect

Member: American Society of Golf Course Architects

664 N. Michigan Ave.
CHICAGO 11, ILL.

Phone: Whitehall 4-6530

WILLIAM F. GORDON

Golf Course Architect

Member
American Society of Golf Course Architects

Doylestown,
Pennsylvania

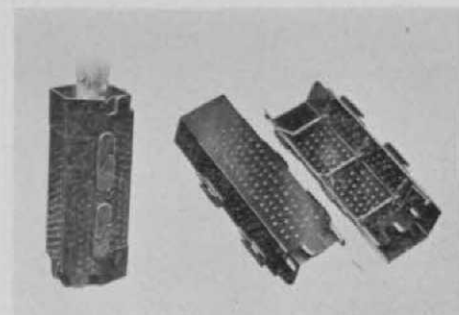
Perry Maxwell
GOLF ARCHITECT

Builder of Outstanding Golf Courses.
Personal attention to distinctive
construction and remodeling of greens.

1201 N. DENVER AVENUE
TULSA, OKLAHOMA

Plastic Tree Protector

The Como-Tex Co., Inc., of Chicago, Ill., introduces a device for the protection of young trees against pests and natural ravages. The device is known as the Cee-



Tee Tree Protector, and is molded from 3/32" thick durable black plastic of special composition to guard the base section of growing sapplings against sun scald, winter burn and herbivorous pests. Further details may be secured by writing direct to the Como-Tex Co., Board of Trade Bldg., Chicago.

Ferrier's New Book

Low Score Golf, by Jim Ferrier, in Ziff-Davis Pub. Co. Little Sports Library; \$1.25. Excellent illustrations and clear, compact text opposite the pictures make this a sound primer of golf. Jim's bum left knee doesn't interfere with the instruction value of the illustrations. He does a first class job on the details and points out some of the more common faults in a way that will help many besides the higher handicap players to improve their games.

Dunner "Golfer" Featured by Scoggins

Compiling smart appearance with complete ease of swing, the DUNNER "Golfer," a three button pullover jacket shirt made of fine tropical weave and linen weave fabrics is being introduced by Howard Scoggins, Dunedin, Florida. The "Golfer" incorporates the patented feature, of the Dunner "Invisible Active Swing," a flexible insert of fine knit ribbing set under the armpit made to match the shirt and completely hidden by a bi-swing effect in the back. This patented feature stretches with each movement of the body, eliminating all bind or pull in the sleeves and shoulders as the arm is swung. Tailored vents on each side combined with carefully chosen fabrics make this a comfortable lightweight jacket that will not cling to the body regardless of heat or perspiration. Design of shirt makes it possible for it to be worn inside or outside of trousers with or without a tie.

American Mat Issues Folder

A new 12-page folder, "A Mat for Every Purpose" has just been produced for the American Mat Corporation. It describes and illustrates mats of rubber, wood, composition and steel for commercial and industrial application for the promotion of sanitation, safety and comfort. A copy will be sent free by addressing requests to American Mat Corporation, 1802 Adams Street, Toledo 2, Ohio.

E Z T, New Automatic Tee

The Osage Mfg. Co., 60 East 42nd St., New York 17, N.Y., is marketing a new low cost automatic teeing device. Named the E Z T, the automatic machine has been designed to speed up business at driving ranges and afford easier driving instruction sessions for professionals. E Z T, with convenient foot pedal release, has been engineered with regard to strength and dependability. All parts are standardized with an eye towards easy maintenance and installation — adaptable to present tees. The unit is easily interchangeable for removal and storage.

New Portable CO₂ Sprayer

The portable CO₂ sprayer is an entirely new development in compression spraying, designed to eliminate hand pumping when spraying 2,4-D and other weed control chemicals, insecticides and DDT solutions. The outstanding new feature is a CO₂ gas cylinder mounted on the outside of a three gallon galvanized tank. The CO₂ stored up energy is released by a simple turn of a patented valve into the airtight tank. Spraying is immediate, continuous and uniform. A powerful, even spray to the last drop is possible without reduced pressure. The CO₂ cylinder contains enough gas to spray 15 gals. The cylinder may be inexpensively refilled at the nearest dealer or returned to the factory for 24 hour refill service. For additional information, refer to Sprayer No. 120-7, R. E. Chapin Mfg. Works, Batavia, N.Y.



Front Tractor Hitch for Mowers

A front hitch for 3 and 5 gang cutting units has been designed by the Coldwell-Philadelphia Lawn Mower Co., Inc., Newburgh, N.Y. to fit any type of tractor. The frame, constructed of angle iron with welded joints, is attached in front of the tractor, but is designed so that it has the effect of being pulled rather than pushed.



An additional feature is a hydraulic lift device which enables the operator to raise or lower the entire assembly automatically from his normal riding position. With cutting equipment raised entirely free of the ground, the tractor can be moved rapidly from one mowing job to another, across walks, etc.

Molded Grip Widely Accepted

All-weather Flexi-Grip and Golf Pride Grips manufactured by the Fawick Flexi-Grip Co., Akron, Ohio by a revolutionary development in golf grip production are being featured by many leading manufacturers and used by many of the top professionals according to sales reports. Molded directly to the shaft with end cap and grip as one unit, eliminating any type of wooden plug, the grips are vacuum designed in rubber and rubber and cork insuring a firm, non-slip grip in all kinds of weather and climate.

CLASSIFIED ADS

Rates: Minimum insertion \$4.00 for 20 words; additional words 20c each. Bold face type, 25c per word. Classified cols. reserved for help or services wanted and for sale of used equipment.

Greenkeeper - Superintendent Wanted: A large Country Club operation in Ohio is in need of a capable man to take complete charge under direction of Club General Manager. A proven record of experience and background is necessary. Club has good equipment and ample operation budgets. A producer can make a good deal for himself. Single or married man considered and all replies will be treated confidentially.

Reply to Box 1015 Goldom Magazine, giving complete details in first letter. Interviews will start immediately.