



Full length glass doors and full view window make an inviting entrance to Spalding and Reach, Wright & Ditson Philadelphia offices.

Spalding Moves Into New Philadelphia Office

New and enlarged Philadelphia offices of A. G. Spalding & Bros. at 401 North Broad Street, are modern in design and so situated to provide every possible facility for Spalding and Reach, Wright & Ditson customers. Only four blocks north of the Broad Street Railroad Station, the offices have their railroad freight terminal, and loading platform for trucks, in the basement. Dealers visiting the Spalding offices in their own cars don't have to worry about the usual parking problem — there's a parking area inside the building.

Spacious new offices are glass enclosed and contain two beautiful sample display rooms in addition to large warehousing capacity.

"We're very happy to be here" said A. H. Williams, Dist. Mgr. of Spalding's Philadelphia offices. "Now, we can give our customers the best possible service."

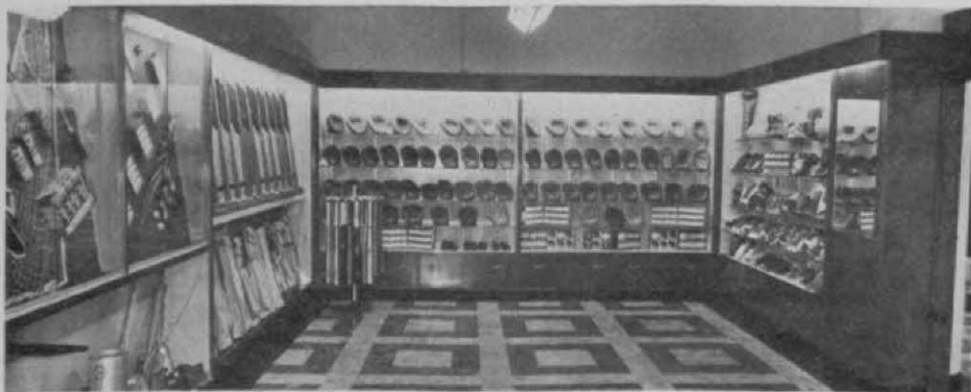


Philadelphia Dist. Mgr., Amos Williams seated behind desk with J. Schmid, Phila. area sales representative and on his left, Ernest Heilman, Wash., D.C. area sales representative.

Bad Spring Reflected in Detroit DGA Report

Detroit District GA 1947 annual report showed that bad weather in spring cut down total of play under 1946 although fall season somewhat promoted recovery. Nine of the 16 reporting private clubs showed a decrease, two were same as 1946 and seven were ahead. Munny courses fell off 50,000 rounds from 1946 but munny income was down only \$11,000. All except one private club reported increase in golf course maintenance and general operating expenses. There are openings for 382 members in the 19 reporting private clubs with 139 of these openings being at one club. Annual dues range from \$24 to \$360. Course maintenance cost for 1947 in Detroit District GA courses ranged from \$32,000 to \$24,000.

An especially interesting part of the DDGA Green Section report concerned a meeting held during the PGA championship at Plum Hollow. Differences of opinion between turf experts headed by Dr. Fred



View of one of two spacious dealer sample rooms of Spalding's new Philadelphia Offices.