

Stump & Walter

BENTS

*Proved by Test
Over 99% pure*

Strains that we know from years of experience and constant tests are free of weeds and exceptionally high in germination. Now ready for fall seeding — Immediate delivery on these bents and other fine turf producers.

**SEASIDE
TRIPLE A
COLONIAL**

**COCOOS
ASTORIA
VELVET**

*Write for prices on above, and
other varieties and mixtures
of grasses*

**Early fall seeding
builds strong spring turf.**

★ ★ ★

GOLF COURSE EQUIPMENT

Mowers, Sprinklers and all types
of Golf Course Equipment.

2-4D WEEDKILLERS

**Karmex Tufor Weedone
Brown Patch Remedies**

Stump & Walter

*Grass Seeds, Fertilizers, Golf
Equipment*

132-138 CHURCH STREET
NEW YORK 8, N. Y.

Green Section Pointers on Summer Greens Care

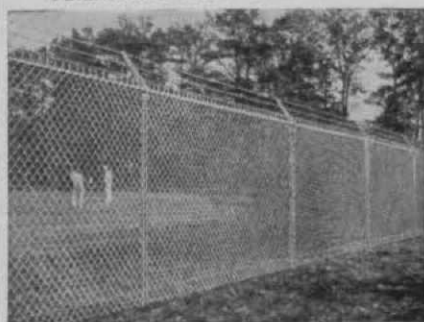
With the hot humid days of summer upon us extra care and planned maintenance practices are extremely important. The following partial checklist of important maintenance practices is submitted for the aid of all superintendents.

WATERING: There are many different opinions on this particular phase of maintenance. The time of day during which watering should be accomplished always has been a subject of much discussion. The Green Section has determined that, for maximum freedom from brownpatch, watering should be accomplished during the early hours of the morning prior to mowing. A watering of this type has many advantages over night watering. Not only is the grass supplied with the necessary moisture for growth but early morning watering will break up the mycelium of brownpatch and also remove the dew, which, in itself is a perfect medium for the growth of the disease organism.

Another advantage of early morning watering is that the grass dries more quickly so that mowing can be started sooner. By avoiding evening watering the grass goes into the night dry and is in

PAGE FENCE ^{-Since 1883}

• AMERICA'S FIRST WIRE FENCE •



Choose the Right Fence

• The right fence for you is made by PAGE, pioneer maker of Chain Link Fence. It can be the one of several styles which is best suited to your needs, and it can be had in a choice of metals. Our nearby Association member will confer with you on the fence you need and submit cost estimates without obligation. Write for illustrated information and we will send his name. Address PAGE FENCE ASSOCIATION, Headquarters: Monessen, Pennsylvania.

**A PRODUCT OF PAGE STEEL & WIRE DIVISION
AMERICAN CHAIN & CABLE • BRIDGEPORT, CONN.**

a more favorable condition for resistance to brownpatch.

Watering when accomplished, whether in the morning or at night, should be thorough in order to promote deep root growth.

One exception to the above is during the period following a prolonged rainy season. Extreme care will have to be observed at a time like this to prevent "scald." Even though the soil may be saturated, several light sprinklings a day may be beneficial in order to reduce high evaporation rates and to keep the top layer of the soil moist. This procedure has been tried and has proved to be successful on many courses throughout the country.

MOWING: It is recommended that the mowers not be raised during the summer. If the grass becomes tender during these hot days, it has been proved that by skipping a mowing and keeping a constant mowing height, excellent results can be obtained.

One disadvantage of raising mowers during the summer is that a "nap" tends to develop which increases the watering problem and disease incidence. Where such a "nap" exists the control of diseases becomes more difficult.

Applications of chemicals to the surface of the grass will stop the immediate

DUO-WASHFOUNTAINS SERVE THE MODERN CLUBHOUSE



One Bradley Duo-Washfountain takes the place of two conventional basins with the one DUO sprayhead replacing four ordinary faucets. In addition, the self-flushing bowl and automatic foot-control reduce maintenance and afford maximum sanitation. Further details can be secured by writing for DUO Bulletin 464-D. BRADLEY WASHFOUNTAIN CO., 2359 W. Michigan Street, Milwaukee 1, Wis.

BRADLEY
Duo Washfountains

HOW do you like Your Members?

SCALDED—and ready to resign? **FROZEN**—numb and knocking? **JUST RIGHT**—and rarin' to go?

There's only one right answer and don't laugh it out of your budget meeting. A one-second shriek from a steam-scalded member has cost many clubs more than an hour on the red net-work. And beware of the member who has been sleet-shocked by sudden shots of ice water; he always hops out ready to clean up the whole house committee. So what? Have your plumber install Powers thermostatic shower mixers. Safe—because they make these dangerous extremes impossible; comfortable—because the temperature remains constant wherever set; economical—because they promptly deliver water at the desired temperature without wasting hot and cold water, and time.

48GA

POWERS
THERMOSTATIC SHOWER MIXERS



Keep Your Members Out of This Picture.

Phone or Write for Circular H48

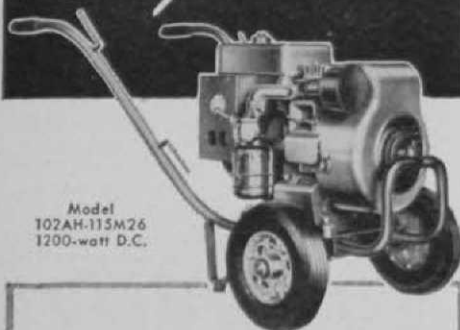
THE POWERS REGULATOR CO., 2799 Greenview Ave., CHICAGO 14 • 231 East 46th St., NEW YORK 17 • 1808 West 8th St., LOS ANGELES 5.

Offices in 50 Cities. See Your Phone Book. Established in 1891.

Over 55 Years of WATER TEMPERATURE CONTROL

OPERATE ELECTRIC TOOLS

Anywhere!



Model
102AH-115M26
1200-watt D.C.

SPEED WORK—CUT COSTS



Hedge Shears



Edge Trimmer



Electric Spade



Grass Clipper

With a low-cost, portable Onan Electric Plant you can use fast-working electrical tools anywhere. Operate grass clippers, hedge shears, edge trimmers, drills, saws, electric spades and chisels, other tools and lights. Easy to wheel, quick to start, equipped with convenient outlet boxes for direct plug-in of tools and lights.

Powered by economical-to-operate Onan 4-cycle, one-cylinder, air-cooled engines. Eighteen models—A. C.: 350, 500, 750 and 1000 watts, 115 volts; D. C.: 600, 750, 1200 and 1500 watts, 115 volts.

*Write
for
Folder*



D. W. ONAN & SONS INC.

5166 Royalston Ave., Minneapolis 5, Minn.

ONAN ELECTRIC PLANTS

growth of the disease organisms, but with a heavy mat the organism lives over below the surface and quickly reappears as soon as ideal weather conditions for the disease recur.

DISEASE CONTROL — BROWN-PATCH: Application of an inorganic mercury fungicide, applied at the rate of 1 to 2 ounces to 1,000 square feet at each application; or Tersan, applied at the manufacturer's recommendation, should give adequate control. The use of mercury compounds during hot weather may discolor the grass slightly and it definitely has a retarding effect on the growth rate. Tersan has been proved to be perfectly safe to use in hot weather.

COPPERSPOT: The chemicals best suited for the control of this disease are Puraturf and Puratized 177. Other commonly-used available fungicides have been unsuccessful in its control.

ALGAE CONTROL: Hydrated lime, applied at the rate of 2 or 3 pounds to 1,000 square feet, distributed as a spray or dust, has given rapid and satisfactory control of algae.

FERTILIZATION AND TOPDRESSING: No application of fertilizer or topdressing should be made during hot weather.

IS YOUR TURF

SICK?



WE HAVE A CURE

Our stock includes all the leading brands of fungicides, insecticides, weed killers, chemicals and other supplies. Your order will receive immediate attention.

Write or call us today.

George A. Davis Inc.

5440 Northwest Highway, Chicago 30, Ill.

ther except where abnormal conditions prevail.

HEAVY SOILS: Poor water percolation into the soils can be attributed to heavy soils and matted greens. Shallow rooting is also prevalent in heavily-compacted soils. Plans should be formulated for aerating such soils in early fall when the grass is in an actively growing stage.

Winter School for Greenkeepers Opens Jan. 3, at Univ. of Mass.

The 19th annual ten week Winter School for Greenkeepers under the direction of Professors L. S. Dickinson and Geoffrey Cornish will open January 3, 1949 at the Univ. of Massachusetts, Amherst.

Courses will be given in Grasses, Costs, Equipment, Soils, Fertilizers, Water Systems, Drainage, Botany and Entomology. A series of lectures will also be given on construction of fine turf areas.

A number of noted greenkeepers and golf course construction men are being invited to conduct discussions in the evening periods. In addition, part of the research work now being carried on at the University is located in greenhouses and will be available for the Winter School.

Attendance will be limited to 25 qualified men. Write direct to Prof. Dickinson for application blanks.

Player Satisfaction DEPENDS ON A CLEAN BALL



**LEWIS
GOLF BALL
WASHERS**

Ask your
GOLF SUPPLY DEALER



PREVENTS TRESPASSING ON FAIRWAYS AND GREENS

Realock® Fence provides maximum protection with a minimum of maintenance. It is tamper-proof, weather-resistant, low in cost—furnished with or without barbed wire at top. Write our nearest office for free estimates.

©Reg. U. S. Pat. Off.

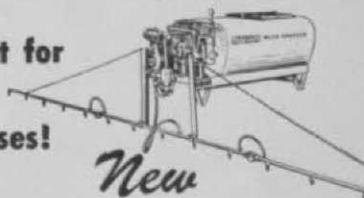
WICKWIRE SPENCER STEEL DIVISION
301 DELAWARE AVENUE - BUFFALO 2, NEW YORK

THE COLORADO FUEL AND IRON CORP.
CONTINENTAL OIL BUILDING - DENVER 2, COLORADO

THE CALIFORNIA WIRE CLOTH CORP.
1030-11TH AVENUE - OAKLAND 4, CALIFORNIA

BRANCHES & DISTRIBUTORS IN KEY CITIES EVERYWHERE

Great for
Golf
Courses!



MYERS WEED SPRAYER

Unbeatable for fast, economical weed control, complete coverage and easy handling. Simple, time-proved pump is serviced by Myers dealers everywhere. Parts are always available. Folding boom is readily adjustable. Tank is specially built for weed spraying solutions. Complete Myers line includes tractor-drawn, Wheelbarrow and Utility Sprayers with many exclusive features. Mail the coupon.



THE F. E. MYERS & BRO. CO.
Dept. K-266, Ashland, Ohio

Send free literature on

- ☐ Myers Weed Sprayer
☐ Complete Power Sprayer line

name _____

town _____

county _____ state _____