

S. Cal. Pros Honor Supts. and Amateur Aide

With more than 200 members and guests attending, the 27th annual meeting of the Southern California PGA was held recently at Riviera CC, Los Angeles.

One innovation was the attendance, for the first time, by invitation of the pros, of over a score of greenkeepers from the clubs of the respective pros, each greenkeeper being the guest of his home pro. The SCPGA has approved a policy of "closer cooperation with the greenkeeper" so that the further exchange of ideas and problems of course maintenance may be enhanced. The SCPGA announced that it will go "all-out" in the drive to have the 1948 National Greenkeepers Association annual convention select Los Angeles or some other Southern California city as the site for this important event.

A definite cementing of the pro-greenkeeper tie was accomplished when the SCPGA honored 3 local greenkeepers with a gift to each in the form of a sterling silver engraved cigarette lighter, for their very fine work, time and talent given to the construction and maintenance of pitch and putt "rehabilitation" golf courses for servicemen at Sawtelle and Birmingham General Hospitals, the Long Beach Naval Hospital and two similar layouts at Santa Ana GI convalescent centers. The greenkeepers so honored by the SCPGA were William Stewart of Hillcrest CC, the pre-

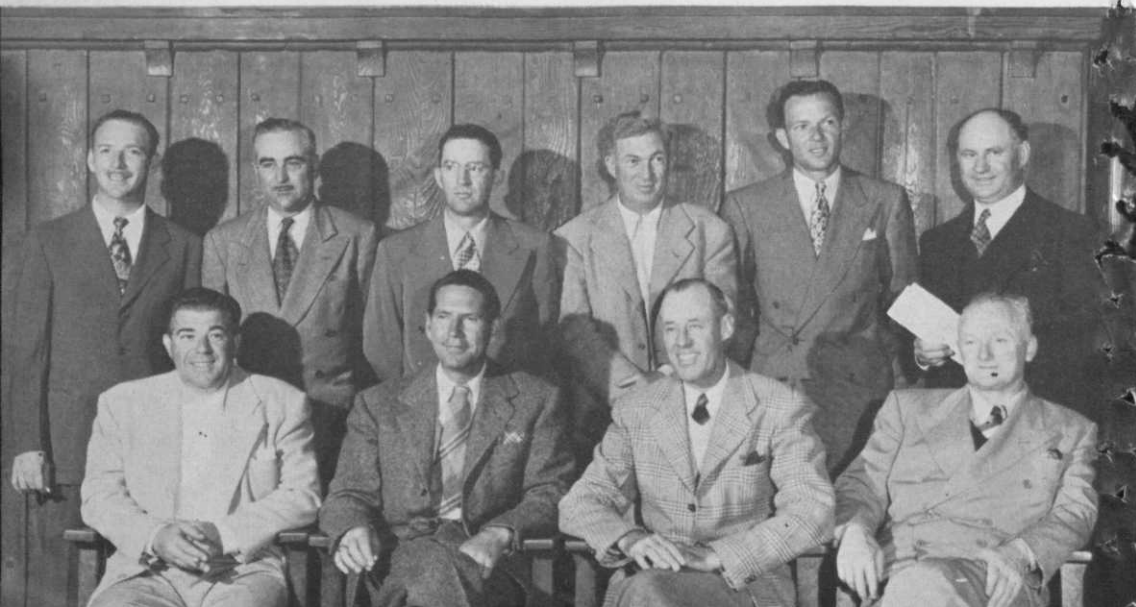
sentation being made by George Thompson, president of Hillcrest acting for and on invitation of the SCPGA; Robert Greenfield, greenkeeper at Wilshire CC, whose gift was proffered by Olin Dutra, past president and now honorary life member of SCPGA, and Rodney Barker, greenkeeper, Virginia CC, who stepped up and received his honor from William P. "Billy" Bell, well-known golf architect, acting for SCPGA, and who designed all the PGA-sponsored pitch and putt rehab golf courses. John Paap, Long Beach attorney and director of the Long Beach Recreation Commission, was given a similar award for handling all the legal work in connection with the rehabilitation program.

Award to "Golf's Best" Aide

Highlight of the general meeting was the SCPGA's annual award to the person voted to have "best served golf" in Southern California. This year the award went hands-down to Milton P. Arthur, Long Beach chain-theatre owner and member of the Virginia CC of that city, for his remarkably insistent and consistent record of helping servicemen, particularly handicapped men, with golf facilities and other services. As George Lake, SCPGA president, aptly put it, "the 9-hole pitch and putt course at the Long Beach Naval Hospital will re-

(Continued on page 92)

SCPGA Officers and Directors for 1947. Back row, left to right: Clayton Aleridge, Rio Hondo CC, Downey; John Bellante, La Jolla CC, La Jolla; George McInerney, 19th Hole Driving Range, Huntington Park; Curly Howard, Long Beach Public GC, Huntington Beach; Bud Oakley, Palos Verdes CC, Palos Verdes Estates, second V.P.; Joe Novak, Bel-Air CC, West Los Angeles. Front row, left to right: Harry Bassler, Fox Hills-Baldwin CC, Culver City, first V.P.; George Lake, Recreation Park GC, Long Beach, president; Marvin Clawson, Sunset Fields, CC, Los Angeles, secretary-treasurer; Willie Hunter, Riviera CC, Pacific Palisades, honorary president.



6 FACTS it will pay you to know about the SUPER D-17



EMPLOYERS of unskilled labor find the new Clemson Super D-17 Precision Lawn Machine repays more per dollar of investment, costs less per square yard of sward cut. Here's why.

1. *Cutting Height*—Fingertip adjustment by turning a single wingscrew.
2. *Shear Adjustment*—Perfect alignment of reel to bed-knife is easy with two wingscrews.
3. *Handle Suspension*—Bobbing on bumpy ground is eliminated.
4. *More rigid*—Bed-knife is integral part of main frame.
5. *Roller can't split or warp*—Made of molded plastic. Three-section design makes turning easier, eliminates scuffing of sod.
6. *Easier to carry*—Weighs only 34 pounds complete! Full 17-in. cut.

Sold exclusively through wholesale and retail channels by the makers of world-famous Star back saw blades and frames.

CLEMSON SUPER D-17 PRECISION LAWN MACHINE

Product of Clemson Bros., Inc., Middletown, N. Y.

GREENSKEEPERS !!

PEAT

FOR TOP DRESSING GREENS

our Black Cultivated Peat is unexcelled, milled to almost the fineness of flour. A velvety, smooth peat that will not ripple on the green under heavy watering.

FOR THE BUILDING OF BENT GRASS GREENS... our NEUTRAL BROWN PEAT is unbeatable as a soil conditioner. It mellow a hard soil, will bind together a sandy soil. Will cut your watering bill in two because of watering holding ability. Don't build your green until you see our products!!

Sold by the cubic yard. Carloads to all points within the U. S. Truckloads of 25-30 cubic yds. delivered within 250 miles of Mason City, Iowa. WRITE OR WIRE FOR QUOTATIONS.

ELI COLBY CO.

HANLONTOWN, IOWA

So. California Pros

(Continued from page 72)

main a living monument" to Arthur and the SCPGA, who together, paid for its entire layout and construction. Arthur was presented by Lake, for the association, with a lifetime honorary membership in the Southern California PGA.

As the SCPGA president remarked in his presentation speech, the Long Beach



George Lake, pres., SCPGA, presenting Milton P. Arthur, Long Beach, with Honorary Life Membership as "golfer of the year" who had "best served golf" in Southern California.

Naval Hospital pitch and putt course was only a semi-climax to the list of many gracious actions of Mr. Arthur for servicemen, with golf as the medium.

Lake first contacted Arthur prior to the appearance in 1943 of Bing Crosby and Bob Hope in an exhibition to secure gifts of golf clubs for servicemen. When Arthur learned the reason for Lake's solicitation of advertising, he not only cooperated by publishing announcements of the Crosby-Hope golf exhibition in his newspaper ads, but on learning that servicemen would be charged a nominal 50c admission fee, he



Rodney Barker, greenkeeper, Virginia CC, being presented with gift by William P. "Billy" Bell, architect for PGA-sponsored golf rehab courses.

sent along his check for \$250.00 and instructions to Lake to "let the first 500 servicemen in free". On a hurry-up visit to the course the day Crosby and Hope appeared, and learning of the success of their appearance in raising golf clubs for servicemen, Arthur then offered and paid the balance of the expenses of the event.

The next year Arthur again completely financed the event and attendance by servicemen and talk developed regarding possible construction of a short rehabilita-



William Stewart, greenkeeper, Hillcrest CC, Los Angeles, being presented with gift by George Thompson, pres., Hillcrest CC.

tion course. Arthur let it be known he would help in every way. The third year Arthur still paid the bills and aided in publicizing "golf for veterans". He even offered Lake his own set of golf clubs "as I don't get the time to play" but this George refused.

In 1945 SCPGA officials conferred with Long Beach Naval Hospital officers regarding the rehabilitation course, originally planned for only 3 holes. Arthur learned of it, suggested a 9-hole layout and put up the money for its completion. His final touch was the arranging for group in-



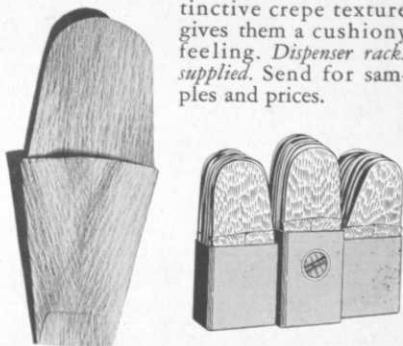
Robert "Bob" Greenfield, greenkeeper, Wilshire CC, being presented with gift by Olin Dutra, honorary life member of SCPGA.

May, 1947

SANI-TREADS

Give Your Members
Finest Slipper Quality

Standardize on SANI-TREADS, favorite of ranking golf clubs for nearly 25 years. They have that superior, water repellent sturdiness that members prefer. Their distinctive crepe texture gives them a cushiony feeling. *Dispenser racks supplied.* Send for samples and prices.



SANI-TREAD CO., Inc.
1722 Elmwood Ave., Buffalo 7, N. Y.

GREENKEEPERS, ATTENTION!

At last—a 100% soluble liquid fertilizer that will do the job. "Na-Churs" is based on the well known W. P. formula perfected by the Ohio State University. It contains the proper nutrients that produce stronger, healthier, tees, greens and fairways. "Na-Churs" is easy to apply; saves time, money and labor. Already, leading golf courses are using it with unmistakable results. For full information, write Dept. G today!

**"NA-CHURS" PLANT FOOD
COMPANY Marion, Ohio**

CUNNINGHAM

MOWER



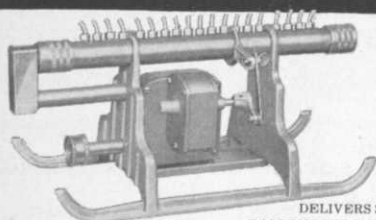
- Fence Rows
- Hazards, Roughs
- Driveways
- Lawns, Woodlots

It mows clean and fast in tight corners; 3-foot cut; variable speed. Young folks can run it. Rugged design, detachable engine. See your dealer or write Dept. 12.

JAMES CUNNINGHAM, SON & CO.
13 Canal Street, Rochester 8, N. Y. Est. 1838

ACME Shower Queen

"RAINS OVER ALL"



DELIVERS 300
GALLONS PER HOUR

SCIENTIFIC DESIGN CAUSES WATER TO FALL LIKE RAIN

The Shower-Queen design, construction and action in distributing water in a natural rain-like manner prevents rivulets, puddles and "bleeding"—all water is aerified as it is thrown into the air and broken up into drops. Trouble-free, centrifugal hydraulic motor operates oscillating shower bar. Simple hand adjustment regulates operating trajectory in rectangular pattern—3250 sq. ft. Sled type runners for easy moving. 14½" long x 6½" wide x 6¼" high. Positively guaranteed.

WRITE FOR FREE LITERATURE AND PRICES

ACME SPRINKLERS

412 WALBRIDGE ST. KALAMAZOO 3, MICH.

struction of 15 to 30 patients at a time at the course, arranging and paying for all transportation and other expenses. His interest and activities continue to this day.

Arthur was visibly affected by the honor paid him and the public recitation and recognition of his "golf for veterans" activities. He had always shunned any personal publicity in connection with the rehab program and was loath to accept it now. His audience was chagrined to learn in his acceptance speech that his "golfing days are over" due to ill health. Arthur's help and contributions were made, he said, on his "philosophy of life" that bread cast on the waters would return in many forms and in the hope that 11 of his family in the service "might be treated nicely by other people wherever they were" in the various branches of service during the war. He called golf "the greatest test of man's character".

The private session of the SCPGA meeting brought out that a minimum of 25 and a possible eventual total of 50 entries would be counted on from PGA pros in this area to attend the California State Open at Fresno, May 1-4; the acceptance of Ellsworth Vines' membership with the completion of his 5-year apprenticeship, and the election of the following officers and directors for 1947:

George Lake, Recreation Park GC, Long Beach, president; Harry Bassler, Fox Hills-Baldwin CC, Los Angeles, first vp; Bud Oakley, Palos Verdes CC, Palos Verdes Estates, second vp; Marvin Clawson, Sunset Fields GC, Los Angeles, sec.-treas.; Willie Hunter, Riviera CC, Los Angeles, honorary president. New member of the board of directors, Curly Howard, Long Beach GC, Huntington Beach. Hold-over board members included Joe Novak, Bel-Air CC, Los Angeles; John Bellante, La Jolla CC, La Jolla; Clayton Aleridge, Rio Hondo GC, Downey; George McInerney, 19th Hole Driving Range, Huntington Park, and Bassler.

Bassler, top money-winning California

1914 — FULNAME — 1947 MARKING

"The mark of consideration"

1. Each FULNAME MARKED ball may benefit others as well as the owner.
2. Essential to fullest enjoyment of Golf.
3. A service that pays both players and professionals.

Write for complete information

THE FULNAME CO.
CINCINNATI 6, OHIO

HARDWOOD FLAG POLES

Made of the finest, kiln dried, second growth, tough White Ash. Tapered from approximately 1" at bottom to ¾" at top, and fitted with flanged aluminum ferrules to fit standard 1½" cup. Sanded finish with prime coat of lead and oil and finished coat of finest white enamel. Available in 2 or 3 color combinations.

Your inquiries and orders will be referred to a nearby distributor.

LEAVITT CORP.

(Est. 1895)

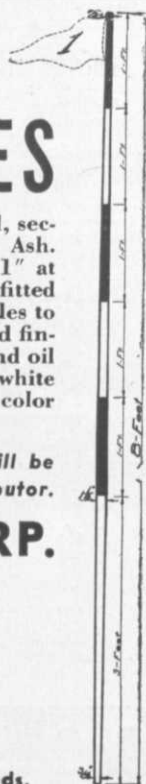
URBANA, ILLINOIS

Builders of

KNOCKDOWN

bleachers

for sports events of all kinds.



pro this year with \$1489 purse winnings in 15 sanctioned meets, swept the individual sweepstakes with a 71 1-under par round, the only one to break par, and with his partner Bill Friedman, won the pro-amateur best-ball with a 9-under par 63, in the day's play over the difficult Riviera course, host to the pros.

Photos by Waldo Glover & Associates.

MacGREGOR PROS MEET—Pros on the Pro-Technical Advisory Staff of MacGregor Golf, Inc., Cincinnati met April 8-9 at the plant. Henry P. Cowen, pres. and gm., says the discussions covered golf clubs, golf balls, sports wear and the general merchandising and distribution program for 1947. At the meetings were Byron Nelson, Craig Wood, Claude Harmon, George Schoux, Chick Harbert, Toney Penna, Chick Rutan, Charles Penna, and Jerry Glenn.



Winged Foot GC (N.Y. Met. dist.) has begun a long-term campaign of health protection on the 6000 trees on its 225 acres. Disease control, spraying, feeding and pruning will be done by Bartlett tree experts. L to R: Claude Harmon, pro, H. S. Tuthill, Jr., greens chmn., A. R. Greely, Bartlett representative, and R. I. Simmons observe treatment given a tree infected with bleeding canker disease.



A valuable soil amendment for green dressing mixtures and green construction. Cuts labor costs.

NUTRIA PEAT SALES COMPANY
500 Stinson Blvd. Minneapolis 13, Minn.



Calo-Clor* is still the most efficient safeguard against both large and small brownpatch. Be sure to have it on hand for quick action, when fast-working turf disease strikes.

Suspension Calo-Clor for use in sprayers—Regular Calo-Clor for dry application.

Calogreen* for small brownpatch.

*T. M. Reg.

MALLINCKRODT

80 Years of Service

Mallinckrodt St., St. Louis 7, Mo.
CHICAGO • PHILADELPHIA



CHEMICAL WORKS

to Chemical Works

72 Gold St., New York 8, N. Y.
LOS ANGELES • MONTREAL

UNIFORM • DEPENDABLE • PURETY

**BE THE MASTER
OF YOUR LAWN**

WITH A **WHIRLWIND**

THE ONLY POWER MOWER
WITH THE 15-YEAR
SERVICE PROVED



ROTARY-SCYTHE, SUCTION-LIFT
Cutting Action

Spring rains and lush, early growth cause grass and weeds to get out of bounds at this time of year but you'll always be the master of your lawn if you are equipped with a WHIRLWIND POWER MOWER.

Because of its patent-protected, rotary-scythe cutting action, this mower cuts grass and weeds of any height, in any condition . . . cleanly, uniformly, rug-smooth. Mulchifies clippings for self-fertilization of turf.

Whether you cut your grass "on schedule" or "off schedule" you'll always be the Master of your Lawn with a WHIRLWIND. Write for free literature and name of dealer nearest you. Address Dept. G-547.

WHIRLWIND LAWN MOWER CORP.
730 W. Virginia Street
Milwaukee 4, Wisconsin

The 20-inch cut WHIRLWIND Junior is ideal as auxiliary equipment for mowing closely confined irregular areas. Cuts close to obstructions.

