

Need locker aisle runners?

MELFLEX Runners . . .

standout in the golf field
for the way they stand up
in under-foot safety service!

Safety, comfort, smart looking, easy to handle and clean, backed by the test of rugged use year after year—that's the story of Melflex Runners at hundreds of clubs throughout golfdom.

Made of special non-slip, oil resisting Neoprene rubber they outlast ordinary runner matting 3 to 1.

WRITE—for folder and prices of all Melflex Safety Products.

YES—delivery will be prompt!



PERFECT GRASS AT LOWEST UPKEEP COST



Mixtures carefully blended to your specifications or our special formulas for varying conditions of soil, climate and use.

STRAIGHT GRASSES • BENTS

High germination and purity.

TELL US YOUR PROBLEM

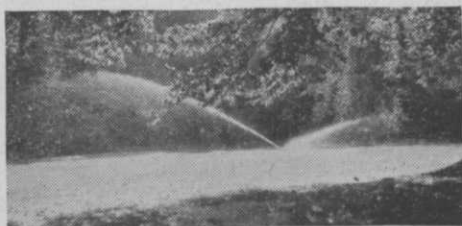
ASGROW SEEDS

Main Office: New Haven 2, Conn.

★ **DOLGE RETIREMENT PLAN**—A new retirement plan put into effect by The C. B. Dolge Co., Westport, Conn. will make it possible for all employees to retire at the age of 65 with an assured income for life. The amount in each case will depend upon length of service with the company and the income of the individual but nobody who retires under the terms of this plan regardless of the size of his or her income, will receive less than \$100.00 a month. The employee and the C. B. Dolge Company each make a contribution to the plan, but in many instances, the contribution of the company per annum is as much as 10 times that made by the employee. Karl A. Dolge, Dolge pres. says; "I have long felt that industry should, whenever possible assure a measure of security to those who have given faithful service through the years. I am convinced that the plan as in effect is the best one because it represents the cooperative spirit. The employee makes an effort to provide for his old age—the employer likewise makes a significant contribution. If at any time, the employee leaves the company, he suffers no loss—he gets back the amount he put in, plus 2% interest. The plan also has an insurance feature."

The plan is on a voluntary basis. Acceptance has been enthusiastic and unanimous.

PERFECTION SPRINKLERS FOR 1946



**... were first offered in 1939
TODAY THEY OFFER YOU:**

1. Greatest possible coverage for any given pressure and capacity.
2. Most even distribution ever offered.
3. Full application on outside edge of sprinkled area.
4. Simple, practical, sturdy, understandable construction.
5. Most practical heavy galvanized steel disc bases.
6. Complete assortment of sizes to meet every greenkeeper's needs.
7. Adaptable for attaching to snap valve systems.
8. PREWAR Prices through 1946 as long as supply lasts.

**PERFECTION SPRINKLER CO.
ANN ARBOR, MICH.**

(Note NEW ADDRESS of our NEW PLANT)

Golfdom