

tivities like Chinese checkers and constructive reading.

Constructed of brick, the caddie house consists of one large room, approximately 24 by 46 feet, overlooking the beautiful 18-hole golf course. It accommodates 300 boys and is equipped with a sound system for the starter's and cashier's desks so that the caddiemaster can be notified, without loss of time, which caddies are needed. An important feature of the caddie house is the large open fireplace where the caddie can warm himself and dry his clothes in inclement weather. A nine-hole putting green was built alongside the building.

Checker boards, sports reviews and magazines are available to the boys. Should any caddie feel the urge to whittle he is immediately discouraged by the fact that the benches and tables are constructed of stone. A bulletin board is also maintained to keep the caddies up-to-date on golfing events throughout the country, and to post important notices.

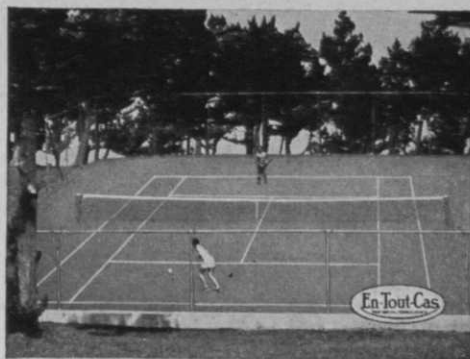
Robbers Slay Mrs. Fred Miley and Daughter, Marion

MRS. FRED MILEY, wife of the veteran pro, and daughter, Marion, nationally famous golfer, were shot by two masked robbers in the Lexington (Ky.) CC on the night of Sept. 27. Mrs. Miley, who was shot three times, lived two days before succumbing and was able to give police a meager description of the robbers; Marion, shot in the head and back, died en route to the hospital.

There had been a dance at the club. About 1:30 a.m., after the last member had left, Mrs. Miley and her daughter retired in separate rooms. They were alone in the building. Between 3:30 and 4:30, according to the police, Mrs. Miley was awakened by the robbers. The sound of the shots at Mrs. Miley or her screams wakened Marion, who rushed into the room and was herself shot.

Total loot was \$145. The murderers had taken the precaution to cut the phone wires to the club. This forced Mrs. Miley, though gravely wounded, to crawl several hundred yards to summon aid.

Fifteen days later, on Oct. 12, police of Fort Worth, Tex., picked up for questioning an ex-convict named Thomas Penney, 32. He confessed the Miley murders, naming Robert Anderson, 36, also an ex-convict, as his companion. Trial of the two men is scheduled for the near future.



TRUE TENNIS COURT ECONOMY!

Today, more than ever before, you must be doubly careful in the expenditure of money... a little must go the longest possible way. *Quality and value received* become all important.

If there are problems regarding your present tennis courts—drainage, surface, maintenance, equipment—or a desire to install new courts, you must make absolutely sure you get the most for your money... the best in quality and value.

By using world-famous En-Tout-Cas materials, whether for clay, asphalt, or any surface, you may rest assured that you are getting the BEST that there is—materials which have proved their *superiority and economy* in hundreds of cases over the past 25 years.

If you are planning a new installation, put in *modern* up-to-date En-Tout-Cas. It will give you tennis shortly after any rain, no matter how heavy, and will provide your members with tennis sooner in the spring... later in the fall. And its annual maintenance costs are *far less* than any other fast-drying surface. Installation costs are *as low or lower than any other fast-drying* court made. Spend your tennis appropriation wisely. Insist on the best—Modern En-Tout-Cas.

Regardless of what your court problems are, make use of our free consulting service.



Spend your money wisely and insist on the best—Modern En-Tout-Cas.

EN-TOUT-CAS AMERICA, INC.

630 Fifth Ave. • Circle 6-5547 • New York, N. Y.