



Architect's drawing of new Klinger Lake CC clubhouse, which will have its formal opening on Decoration Day.

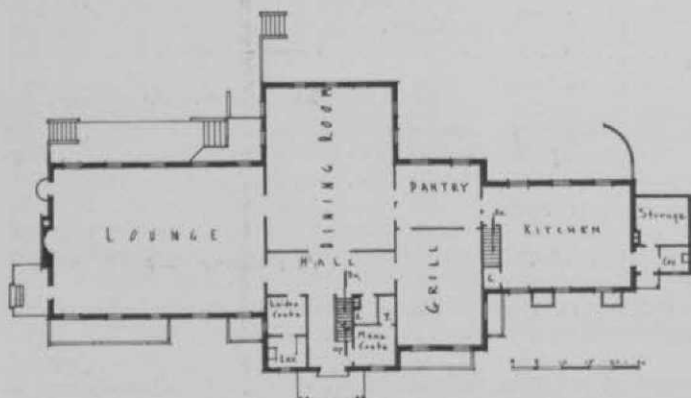
NEW CLUBHOUSE FOR STURGIS

JUST ten months after the clubhouse was destroyed by fire, Klinger Lake Country Club (Sturgis, Mich.) members were preparing to open their new clubhouse, construction of which was begun last October. The building was pronounced ready for occupancy on the first of May, and the formal opening is scheduled for Decoration Day. Fire caused complete destruction of the old building last July 31, with damage estimated at \$35,000, of which approximately one-half was covered by insurance. A temporary building was erected for the members to use last summer while plans for the new structure were being made.

The new clubhouse is a low, long, rambling structure built of sandstone. A circular driveway approaches the front entrance and flagstone porch. From the front door a main hall leads directly into the

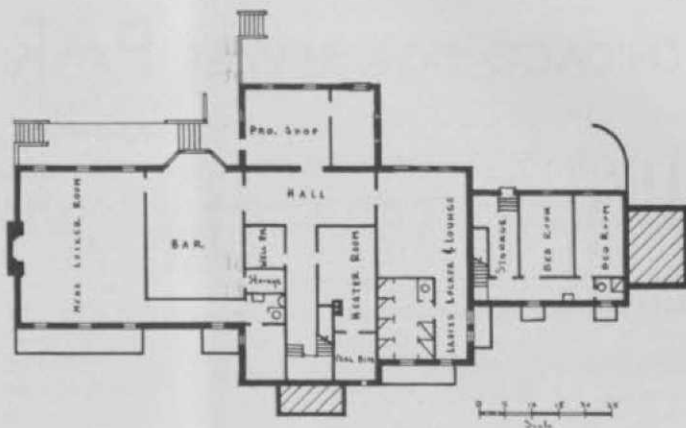
dining room, which has mostly a northern exposure. Stairways to the basement and to small quarters on the second floor are near the front entrance. There are large locker-rooms for both men and women in the basement. The north side of the basement is really the first story of the building, the building being on a side hill. A bar has been installed on this floor and a large stone fireplace is built at the west end of the basement.

On the second story, or main floor, are located the cocktail lounge, and lobby, and a built out section with northern exposure houses the large dining room. On one side of



First-floor plan of new clubhouse; note that service sections are well separated from rooms for exclusive use and enjoyment of club members. Stairways to basement are near front entrance.

Because the building is on a side hill, basement is really first story, and plenty of light is available. Bar, pro-shop, men's and women's locker-rooms, and employees quarters are located in basement, in addition to boiler room and ample storage space.



the main entrance is the women's powder room, and a men's lavatory is located opposite. At the west end of the floor is a spacious lounge, equipped with chairs, davenports, and other furniture for the comfort of the members. This will also serve as the ballroom. This lounge was built with extra heavy flooring, perhaps so the members could do the "Big Apple" without endangering the building.

Light and Air Flood Dining Room

The kitchen is located in the east end of the building on the main floor and doors from the kitchen lead through the butler's pantry into the dining room. The floor has been arranged so that light lunches can be prepared in the butler's pantry and served in the cocktail lounge, which has a southern exposure. The most window space in the dining room is on the north, but there are also east and west exposures. Persons dining will have a commanding view of the course, especially of the first, second and ninth fairways.

Living quarters for club employees is provided in the top floor of the building. Room here is limited and guest space is not available.

The only entrance to the ground floor is through the pro-shop, which is located in the middle of the clubhouse on the north side of the basement. The pro-shop has windows on the north side overlooking the first fairway, and windows on the east and west for sun. To the west of the shop is a grill room. Additional living quarters for men employees are provided at the extreme east end of the basement.

The new clubhouse is 126 feet long (east and west) and 58½ feet wide. The roof is covered with heavy Johns-Manville asbes-

tos tile, slate in appearance, and the sandstone quarried at Marshall, Mich., is brown and red in color. Stone and Wagner, Inc., Kalamazoo, Mich., were architects.

Club Managers Choose Denver as 1939 Convention Site

DENVER gets the 1939 national convention of the Club Managers' Assn. Howard Mehlman, president of the Mile High chapter of the CMA, Fred Wood, former pres. of the CMA, Lawrence Mar- rin, mgr. of Cherry Hills, and other Denver district managers, are already planning an eventful session. The Mile High managers conducted a lively campaign for the convention and scored when Fred Wood presented the Denver proposition before the April meeting of the CMA directors.

The 1939 convention will be held during the National Western Stock show which assembles a great exhibition of the modern Western cattle country.

CMA operations this year are making a strong feature of the interchange of operating information, along the lines employed in the Pacific Northwest as a collective enterprise of club managers and elected officials. President Crawford and Sec. Smith of the organization are struggling with the problem of getting the fact and figure exchange operating on a lively national basis.

Caddie-Week Proposed—A nation-wide caddie week is being considered by various golf organizations, as a result of a suggestion advanced by Dixwell Davenport, green-chairman of the San Francisco CC. Plans still are in the talk stage. One proposal is to have the National Caddie Week built around the 25th anniversary of Francis Ouimet's triumph as the first American amateur to win the National Open.