

NELSON

Portable and Underground Sprinkling Equipment

Every sprinkler requirement can be met perfectly by some item in the complete Nelson line. Nelson equipment is standard on golf courses throughout the country. Years of specialized sprinkler manufacturing experience insure long life and perfect operation.

Complete information on all types, either permanent or movable, will be gladly sent on request.

**L. R. NELSON
MFG. CO.
PEORIA, ILLINOIS**



"Stream-Flo" Quick Coupling Valve and Sprinkler. Covers evenly areas 100 to 225 feet in diameter.



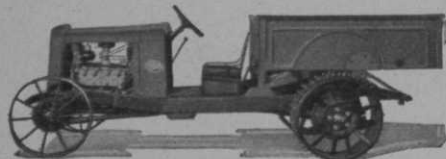
THE "OLD FAITHFUL" Sprinkles evenly up to 125 feet.

\$495 UP

F. O. B. St. Paul

STAUDE

GENERAL UTILITY TRACTOR



Used by More than 2000 Golf Clubs

Light weight! Powerful! Speedy! Owners everywhere enthusiastic over its outstanding performance.

The greatest value in all America. LOW first cost . . . LOW operating cost—keep and repair costs hardly noticeable. The Staude represents an investment in permanent satisfaction.

E. G. STAUDE MAK-A-TRACTOR CO.
2696 University Ave., St. Paul, Minn.

BUY FROM FORD DEALERS
OR WRITE TO US DIRECT.

Many Factors Combine to Make Pinehurst
PGA Best Ever

THE PGA'S most successful championship was the recent 1936 event at Pinehurst. Denny Shute's brilliant short game pitted against the powerful shooting of Jimmy Thomson made the final a tense, significant comparison of two types of games.

Pinehurst's championship course, in superb condition, was an exhibit of the architectural construction and maintenance abilities of Donald Ross and his fine staff. Especially interesting were the approach contours Ross put in when he remodeled the greens for grass. Pros were unanimous in praise of the layout.

Publicity given the championship was far in excess of that received by any other PGA titular event. This was due to the arrangements made by Linde Fowler, Pinehurst publicity manager; John Hemmer, Pinehurst photographer; Ross, Ed Fitzgerald, and Dick Tufts, general manager of Pinehurst. No detail was overlooked in facilitating the filing of press copy. The weatherman was true to the cause and supplied a grade of perfect playing weather that matched the perfection of the course.

Water Pipe Acts as Conductor for
Novel Phone System

KENT BRADLEY, resourceful genius who is greenkeeper at Passaic County (N. J.) GC, has developed a system of communication with his groundsmen, using the course water pipe as conductor for his telephonic conversations. The system is still in the experimental stage but has great possibilities for course maintenance

Three Styles of One-Color Score Cards

of Excellent Quality are

Priced \$19 to \$25 for 5,000

Produced by a New Process they are complete and of correct size.

Samples of these and 4 higher priced 2-color cards to clubs on request.

JOHN H. VESTAL CO., Printers
703 South La Salle Street - - - Chicago