

# WE GIVE 'EM GOLF AT A BARGAIN

By BILL ADAMS, Pro,  
Sioux City (Ia.) Boat Club

BILL  
ADAMS



WHEN guests play the Elmwood golf course of the Sioux City (Ia.) Boat club, situated four miles from the downtown district, and enjoy in addition the social advantages of this organization, they insist it is unique in the United States. Golfers from various clubs in large and small cities, have played this course in thousands since I first joined it in 1930 as club professional. Two years ago I was engaged as club superintendent and professional.

The Sioux City Boat club was organized forty-nine years ago for the purpose signified by the name. It is situated on the Big Sioux river, a tributary of the Missouri. It was a strictly boat club for many years.

Thirty years ago, members began agitating for a golf course. Acreage for a nine-hole layout was obtained across the Big Sioux from the clubhouse. This later was enlarged to an 18-hole course, but it was short. Par was 65. Five years ago the club bought more land, a wooded tract that lay adjacent to the course. A golf architect was engaged to lay out a new course, combining the area already in play with virgin woodland. Then we went to

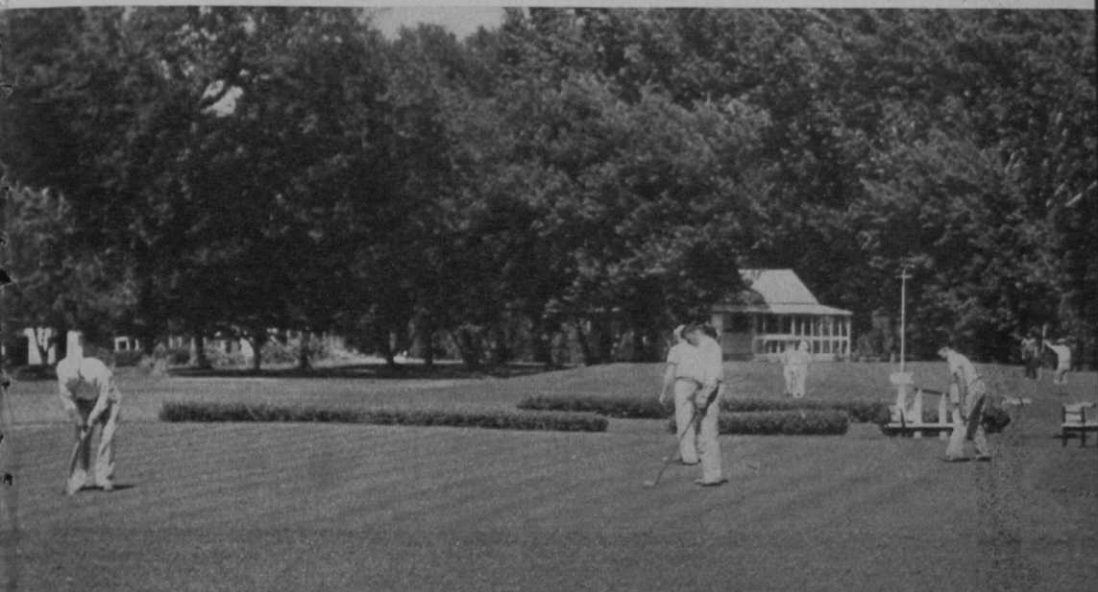
work and built Elmwood, which, I do not hesitate to say, is one of the most attractive I ever have seen.

Par is 72 and the yardage is 6506 on the Elmwood layout. The ground is level for the most part. Elms in profusion border all fairways, many of which are narrow and a stiff test for the straightest golfers. Greens at Elmwood are all Washington bent.

Many of the tees are landscaped, with trimmed hedges forming three sides of an open square. Evergreens are to be found on other tees. Wind-vanes are mounted on several of the tee posts. Our golfers rarely have to pull up the grass to toss it overhead and get the drift of the wind.

Our clubhouse is in Sioux City, Iowa. Our golf course, however, is in South

The Sioux City BC course, shown here, is in a different state from that of the clubhouse!





One of the highly popular features of the club is its picnic grounds.

Dakota. Three years ago the United States war department, which contended that the Big Sioux river was a navigable stream, gave us permission to construct a draw bridge, built on sturdy piling, across it. Thus we were able to abandon the power boat in which for years golfers were transported from one state to another for a round.

We have an excellent clubhouse and spacious grounds. In the house proper are the showers and locker rooms, also a refreshment room, a vast parlor and ball room.

There is a large swimming pool which is especially attractive to the juvenile members of this family club. We also have excellent tennis courts.

#### **Picnic Grounds Has Unique Service Set-up**

A feature of the club that appeals to the scores of families composing its membership is the kitchen service and the outdoor picnic grounds. We have a large kitchen equipped with gas ranges where members may prepare the finishing touches to meals brought from their homes. There is a large refrigerator room in which members may temporarily store perishables.

And we have white enameled tables and chairs placed on a lawn in a deep grove of elms, and there during the summer our members and their families dine after enjoying a round of golf, a swim or a fast set on the tennis courts.

Each member family provides its own food and sets its table. The club provides utensils for any cooking that is to be done, the china and silver and the ice for cooling drinks. There is an ice house on the club grounds near the kitchen and members help themselves.

When the family has finished dinner, kitchen attendants gather the dishes and silverware and take them to the kitchen where they are washed and stacked for the next day.

On the first Friday of every month during the summer we have "Family Dinner" night. On this night we have as many as five hundred persons dining on the lawn. The club furnishes coffee, sugar, cream and ice cream.

In this club are men and women members, heads of families, who grew up in it as children. Throughout the club's existence as much consideration has been shown to children as to grownups. The youngsters are looked upon as real members of the club.

The Sioux City Boat club is in excellent financial condition. Throughout the depression its membership had been close to the limit desired. Every year this club winds up "in the black".

The club is well landed. It has five acres in Iowa. In addition to owning outright the Elmwood golf course of 130 acres of fine South Dakota land across the Big Sioux river, it has some 900 acres of fertile farm land now being cleared by squatter tenants. Ultimately revenue from this property is expected to increase the club's income.

#### **Painless Plan Brings Water Fund**

Fairways are to be watered by raising the dues \$5 a year and selling redeemable certificates—not bonds—to the value of \$50 each to the members. Every year for five years the holders of these certificates will pay \$10 less than the annual dues, until the \$50 is refunded. If the member leaves the club before the expiration of the 5-year period, the unused portion of his certificate will be refunded to him.

The cost to members of this unique golf and country club? I've saved that for the last, for it is the best part of the story about the Sioux City Boat club and its Elmwood golf course. Golfers who visit us are amazed to find that members come into this club by paying an initiation fee of only \$75 and annual dues of only \$60.

We have not operated "in the red" a single season. Instead, we have had sufficient surplus to make improvements from year to year to give our members what they want—a golf and country club for every member of the family and a golf course that is a delight from the first tee to the eighteenth green.