

Architect's drawing of clubhouse, Dunstable Downs GC, England, now nearing completion. The great amount of window-space throughout the clubhouse provides an excellent view of almost any part of the course. The modernistic trend employed in its construction is intended to give the club a proper background for an outdoor enterprise.

### Modernistic Architecture Appears in English Clubhouse

ARCHITECTURE of the modernistic type, which seems to have great possibilities for golf clubhouses, has made its appearance in the new home being built by the Dunstable Downs GC of England.

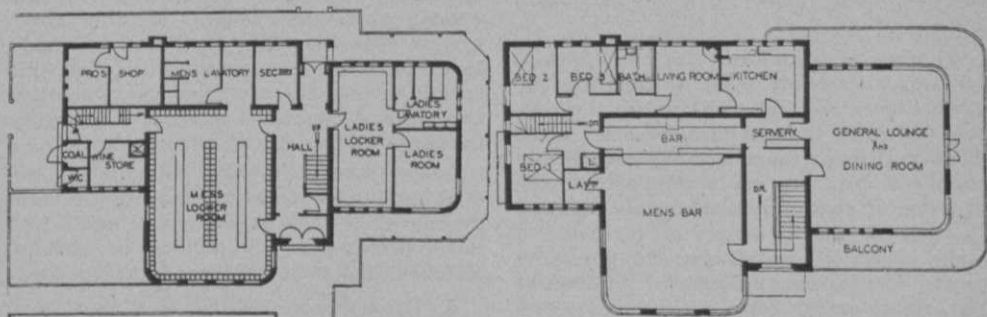
It has occurred to more than one golfer that a fault of modern clubhouses is the lack of window space through which the pleasant vistas of the course and its landscaping would be made part of the picture framed by windows. The generous employment of metal-framed windows in the so-called modernistic plan makes this type of a clubhouse a more fitting headquarters for a basically out-of-doors enterprise. General tendency of golf clubhouses now is toward the old baronial manor theme of protection against the elements, sunlight and other possible invaders.

True, the sharp vertical and horizontal lines of the modernistic type do clash with the flowing lines of natural scenery, but not so violently that judicious landscaping around the clubhouse will not blend the structure into the surroundings fairly well.

An interesting feature of the Dunstable Downs plan is the dining room and bar on the second floor from which elevation a more extensive view of the course is presented. A balcony around the general lounge and dining room provides an attractive spot for meal service.

One suggestion that occurs as the accompanying floor plans of the Dunstable Downs clubhouse are inspected, is that of having a door opening from the pro-shop so that access might be had to the shop from the men's locker-room.

The pro-shop corner is well located if the spot is close to the first tee and eighteenth green.



Practicability is the theme of the new clubhouse, as this diagram well shows. Each room was planned and built to provide the most convenient and efficient service to club members, and to make for easy accessibility to any part of the clubhouse. Main floor at left; second floor at right.