

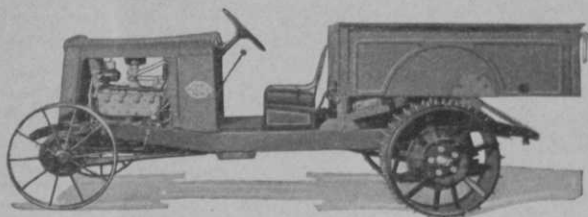
STAUDE GENERAL UTILITY TRACTOR \$495 to \$795

Speedy, powerful, quiet, economical and adaptable for mowing, hauling and all other golf course work. Steel tractor wheels easily replaced with Ford pneumatic tired wheels for road work. Proved by 18 years of service (since 1916).

Attachments only for Ford Models T, A and V-8 \$155 to \$225

Fully enclosed internal cut gear drive for Model A and V-8 Models. See your local Ford dealer or write for full information. Sold on a money back guarantee.

**E. G. STAUDE
MAK-A-TRACTOR CO.
2696 UNIVERSITY AVENUE
ST. PAUL, MINN.**



a simple way to arrive at the square feet is to visualize an approximate square or oblong like the diagrams herewith. The lines represent the outline of a green or trap; the dotted lines represent a square or oblong roughly the same size and easy to measure.

To estimate the area of fairways, refer to the table below, where any combination represents approximately one acre. Determine the average width of the fairway and refer to that width in the table; see how many times the length given will go into the length of the fairway, as marked on the score card, after deducting the rough in front of the tee.

These dimensions equal one acre

Width	Length	Width	Length
70 yds. by	70 yds.	50 yds. by	96 yds.
65 yds. by	75 yds.	45 yds. by	108 yds.
60 yds. by	80 yds.	40 yds. by	120 yds.
55 yds. by	88 yds.		

Example: A fairway with an average width of 40 yds. and 250 yds. long will contain approximately two acres. There are 4,840 sq. yds. in an acre.

LEWIS GOLF BALL WASHER IN 5 COLORS

NEW!—Now Lewis Washers are available in 5 colors in addition to white . . . for an additional charge of 25 cents . . . again Lewis leads all others with the newest ideas. See your golf equipment dealer before making up your 1935 budget. Lewis Washers in lots of 1 to 10 . . . \$6.00
In lots of 11 to 20 . . . \$5.50
Complete tee ensemble—washer, tee stake, towel, waste container, tee data plate . . . \$10.50
Lewis Bag Rack and other equipment.

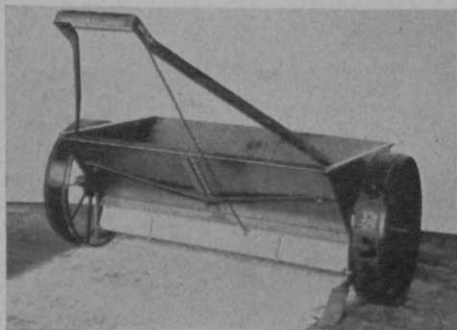


**G. B. LEWIS COMPANY
DEPT. GD 235 WATERTOWN, WIS.**

"Better Prices for Liquor" Manager Urges

A MANAGER IN THE Cleveland metropolitan district comments interestingly on liquor prices: "Through experience in this district, which, no doubt, is true elsewhere, I find that the one large fault of club managers, or, should I say 'committees,' is that the clubs are trying to sell liquors in accord with prices and conditions existing in public hotels and cafes and this is impossible. In Ohio sales at private clubs are restricted to members and their guests throughout a seven-month season of activity. Even on good days we have only a limited number of possible customers. Private clubs here in Ohio are selling only the best liquor obtainable and they should be entitled to a better price for their drinks than are publicly operated places where refills are common."

ROOT ALL PURPOSE SPREADER



CUT your LABOR COST with this machine. For speed, economy and perfect application it is unexcelled.

Manufactured by

**THE ROOT MANUFACTURING COMPANY
1051 POWER AVE., CLEVELAND, OHIO**