

What's New With the Manufacturers?

Timely Trade Notes from
Makers and Dealers

BURKE GOLF COMPANY ELECTS R. H. CRANDALL PRESIDENT

Newark, O.—R. H. Crandall, formerly vice-president of The Burke Golf Co., has been elected president of the organization



R. H. Crandall

succeeding his father, L. W. Crandall, deceased.

Bob Crandall is a veteran of 23 years in the golf manufacturing business, having

made his debut at the age of 15 piling hickory dowels for the Mr. Burke who founded the company. He got some respite from this work during school sessions and in the army. Being trained from the ground up, he is considered one of the country's club manufacturing authorities. He worked up to the management of the organization's club production and design. In 1927 he was elected vice-president in charge of advertising and sales. To his credit during this period was the production of the Lady Burke line of clubs, the first line of clubs made especially for women.

Excellent training under an able father and a fine record of strictly his own making qualifies Burke's new president to handle competently and actively the responsibilities with which the Burke directorate has entrusted him.

SPALDING OPENS PRO QUARTERS DE LUXE AT CHICAGO

Chicago, Ill.—Housewarming has been held in the handsome and large new pro headquarters the Spalding organization has established in its Chicago building at 211 South State street. This layout on the



Spalding's Chicago pro staff. L. to R.: Warren Dawson, George Hegeman, Johnny Miller, Walter Crowe, and Tom Frainey.



New pro golf headquarters at Spalding's Chicago store.

third floor is the biggest pro golf department in the country, according to the say-so of the veteran Johnnie Miller, head of Spalding's pro division at Chicago.

The pro headquarters extends across the State street front of the building and is carpeted and cushioned so the boys can indulge in gossip of the craft and give down some orders in ambassadorial atmosphere. Along two walls is a complete line of samples of the Spalding line. In showcases are arrays of golf shop sundries and the Spalding line of sports apparel. The sports clothing showing is a new idea in a pro department and has registered strongly with the multitude that has visited the new homestead.

Back of the showcases, in a separate room, big stocks of Spalding golf equipment are stored in steel compartments for immediate delivery. The arrangement makes it easy for the boys to order just what they want from the sample stocks in the front room, and get it quickly from the full supplies that are filed away back of the scenery.

Autographed pictures of some of the pro luminaries adorn the walls and further beautification is supplied by the brilliant pans of Spalding's sprightly staff of young men in the pro department whom Mr. Miller has assembled for service to the cause. Tom Frainey, Warren Dawson, Walter Crowe and George Hageman occupy spots in the establishment and with John extend the glad hand of welcome to the pro visitors who are bent on buying or just chatting about some of the close-ups of pro activities.

The Spalding folks have extended a cordial invitation for professionals who

happen to be traveling through Chicago to make the new pro headquarters their operating base while in the city. The local district pros already have settled themselves comfortably in the grand parking place Spalding provided when it moved its pro headquarters to the Chicago building's gold coast.

McCULLOUGH RENEWS CONTRACT FOR P. E. I. BENT

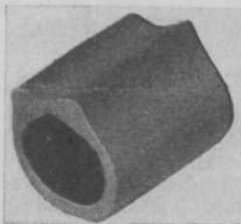
Chas. R. Moore of the J. M. McCullough's Sons Co., Cincinnati, Ohio, met representatives of the Prince Edward Island and New Brunswick Grass Seed Growers' Associations at Sackville November 30 to discuss the market situation in regard to bent grass seed. This firm has been the sole distributor in the United States of Prince Edward Island bent, velvet bent, and Canadian seaside bent from New Brunswick, and Mr. Moore has renewed contracts covering another term of years.

Although the general depression has affected prices for bent seed, the growers have been well pleased with their business relations with the J. M. McCullough's Sons Co., and are hopeful for the future of the industry.—*Charlottetown, Prince Edward Island, Patriot.*

RITE-SPOT IS POSITION MARKER FOR GRIP

Detroit, Mich.—Argo Specialty Corp. is introducing the Rite-Spot, a little rubber device which slips over the end of the golf club. Its purpose is to mark the place for the golfer's left thumb so that when he grasps the club, he will automatically grip it in the right place every time—with the club head always at the right angle.

It is not to be confused with so-called "grips," being rather a "position marker" for holding the club correctly.



Use of a Rite-Spot, it is said, reduces mental hazard, helps to overcome hooking and slicing and is an aid in driving and putting. It is packaged in lots of six in an attractive orange and black carton

and is supplied to pros. in a handsome counter-display box holding six individual cartons.

LEWIS HAS NEW BAG RACK FOR INSTALLATION AT TEES

Watertown, Wis.—G. B. Lewis Co., specializing particularly on tee equipment of all kinds, has come out with a new bag rack.

This device consists of a 1 1/2 inch galvanized pipe 54 inches long, to which is bolted at the top a scalloped aluminum casting. It supports six bags and is not only durable but good looking. It prevents excessive depreciation on the players' bags. Due to the passing of the sand box, against which bags of sticks were formerly rested, this device is a necessity where care of bags and clubs is given proper consideration.

TORO 1932 CATALOG IS BUYERS' NEWS

Minneapolis, Minn.—Toro Mfg. Co. has issued its 1932 catalog which now is available from Toro headquarters here or from any Toro dealer. The book has much news in it for those interested in course, park and estate maintenance. New refinements are incorporated in the standard Toro mowers and tractors, and many items of equipment have been added to the line. Among the latter are a power green mower, sprinklers, power rollers and a "knock-about" rubber-tired quick transportation unit for taking the greenkeeper or members of the greens staff speedily to any part of the course without injury to the turf.

A copy of the new catalog will be sent free on request by Toro headquarters or any of the Toro dealers.

"CATERPILLAR" ANNOUNCES A ROUGH MOWER

Peoria, Ill.—A new "Caterpillar" rough mower for models 10 and 15 "Caterpillar" tractors is ready for delivery. Among features of the mower:

WHAT

● are you going to do about your FAIRWAYS and GREENS this spring?

Your Club's patronage and income this year will depend largely on the condition of your course. You can't afford to have poor fairways and greens in 1932.

Proper fertilization is one of the most important items in your maintenance budget. Even the best seed cannot produce the kind of turf you need on poor, infertile soil.

Armour's Special Turf Fertilizer supplies the necessary plant foods to develop a stronger, healthier, deeper rooted turf—a turf better able to withstand the hard use and abuse of a long playing season. It's economical, too.



Insist that your budget provide for proper fertilization this year.

Write for free booklet on fairway and green maintenance. No obligation.

ARMOUR FERTILIZER WORKS
General Offices

111 W. Jackson Blvd., Chicago, U. S. A.

HENDERSON'S

Tested

Grass Seeds

BOTH in new construction and in renovation, the quality of the seed you use is of greater importance than anything else. No matter how much attention and effort is given to the other detail, it is the seed that determines the results.

When you buy Henderson's Seeds, you get seed that has been grown by men who have specialized for years in growing certain varieties for us. This seed is cleaned and re-cleaned in our warehouses and then it is accurately tested and these tests are checked and rechecked to be sure that it is up to the Henderson standard. That Henderson's seeds are Tested is more than just an advertising phrase.

LET us quote you on your requirements for the coming year. We know that the quality of the seed cannot be better, and we believe our prices, quality for quality, will be convincing.

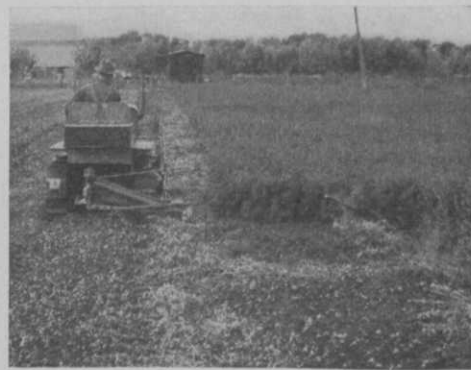
Peter

Henderson & Co.

35 Cortlandt Street,
NEW YORK CITY

A double-acting automatic safety device is provided. If an obstruction gets between the sickle section and guard stopping movement of the cutter bar, power is immediately released by a snap clutch. Should the forward motion of the sickle bar be prevented by its striking an obstruction, the sickle bar pull rod automatically disengages, releasing the cutter bar which may then swing completely around to the rear of the tractor. The snap clutch is mechanically released by a cam and lever at the same time. The sickle bar is brought back into normal cutting position and the ball of the pull rod snaps into its socket.

Long life and easy running of the moving parts is assured by the pitman crank being placed in such position that the pit-



Caterpillar rough-cutter in action

man rod constantly runs in almost the same plane as the cutter bar.

The 7-ft. steel sickle bar is sufficiently strong to withstand the heaviest type of mowing service.

Heavy balance springs insure quick and easy lifting on turns.

The mower is flexible at the point of attachment to the tractor, and also at the heel of the sickle bar.

The mower drive may be disengaged by merely shifting the power take-off throw-out lever.

Removing four bolts and uncoupling the drive chain completely detaches the mower from the tractor, leaving the tractor free for other work.

DOLGE TO SHOW BIG LINE AT GOLF SHOW

Westport, Conn.—The C. B. Dolge Co. probably will have the most extensive line of golf club supplies of one manufacturer's production to be shown at the N. A. G. A. exhibition at New York for Dolge will present, in addition to its course maintenance supplies, its products for clubhouse use. For the courses Dolge will show its weed-

killer, Di-worma worm eradicator, Dolco ant-killer, Ban compound for golf ball washers, and Rat-Scat and Dolge mouse cereal for use around seed storage as well as around clubhouses.

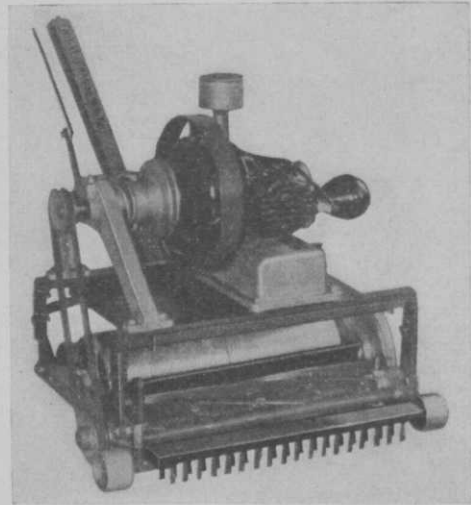
For clubhouse use Dolge has Ban cleaning powder, Alta-Co deodorant and disinfectant, Dustlayer sweeping compound, Tink drain cleaner, Fli-D-Co insect exterminator, Betaform vermin exterminator, De-O-Do-Roma deodorant, Dolco Pine Cleaner for composition flooring, linoleum and varnished surfaces, Tilebrite tile cleaner, and F & E disinfectant.

IDEAL PRESENTS NEW FAIRWAY MOWER AT GOLF SHOW

Lansing, Mich.—A feature of the Ideal Power Lawn Mower Co. exhibit at the Greenkeepers' Show will be its new type fairway mower, which can be converted by one man from a three gang to a five gang, to a seven gang, with ease and speed, due to the mower's entirely different type of frame construction. It is claimed by the manufacturer that these new type gangs are lighter in weight and require less draw bar pull for operation than other mowers of equal capacity and quality.

Emphasis is laid on the fact that a seven gang mower which cuts a swath of 16 ft. weighs only 1,063 lbs. complete with frame

and units, and when cutting a heavy stand of grass on level ground shows draw bar pull of only 340 pounds. The cutting unit



Ideal greens mower, 1932 model.

used with the new frames is balanced for operation over either level or rather rough fairways. The frame itself braced to with-

REDUCED PRICES On The SIX BALL CLEANER



- One to Six Balls at a Time.
- Ejects Balls When Cleaned.
- It Does Not Splash.
- No Gears or Springs.
- Avoids Delay on the Tee.
- Requires Very Little Care.

CLEANERS, Each\$6.75

METAL STAKES, Each..... 1.50

Prices F. O. B.

THE W. G. MFG. & SALES CO.
33 North High St. Columbus, Ohio

Or at Your Dealer

THE PARIS OF AMERICA

NEW ORLEANS' New St. Charles

One of America's Leading Hotels
ACCOMMODATING 1000 GUESTS

The famous Hotel St. Charles assures this season's visitors the same warm welcome that has attracted the country's notables for a century. Modernized to keep abreast of the times the beautiful St. Charles is better equipped than ever before to well serve its distinguished patronage.

ALFRED S. AMER & CO. Ltd.
NEW ORLEANS, LA.

Send for descriptive folder ValORIZATION offices for
Illustrated Mardi Gras all Transportation
Program for the asking Lines in Lobby

HOME OF WINTER RACING

stand strain, is carried on two wide faced wheels so that there is no weight of the frame resting on the cutting units. Pull arms extending from the frame back to the cutting unit side frames are attached by special lug at a point slightly below the wheel center so that the cutting units are held right to their work even in heavy cutting. Cutting units will have 7-inch, 7-blade reels with knives of special heavy steel and the reels geared to operate at a speed that gives a fine, smooth job of cutting.

The 5-gang fairway mower of this new type cuts a swath of 11½ ft., weighs 773 lbs., with draw bar pull of 250 lbs. The new 3-gang outfit which cuts a 7-ft. swath weighs 485 lbs., with draw bar pull of 160 lbs. This new frame hook-up is to be offered by Ideal in 1932 in addition to its standard frame that has been on the market for nearly 10 years. The new cutting units built for 1932 can be used in connection with either type of frame.

In addition to the new fairway equipment on display there will be the Ideal power putting green mower which was shown for the first time last year. The 1932 power putting green mower embodies a number of refinements including a new and easily operated pneumatic rubber tire transport cart—a power driven carrier

BENT GRASS SEED

PURCHASE YOUR RHODE ISLAND BENT SEED direct from the farmers who grow it at its native home here in Southern New England, and thus be assured of a fresh, viable, winter-hardy product.

A. N. PECKHAM KINGSTON, RHODE ISLAND
 "Every penny of waste between farmer and consumer that we can eliminate will be a gain both to the farmer and the consumer."

Golf Course Equipment

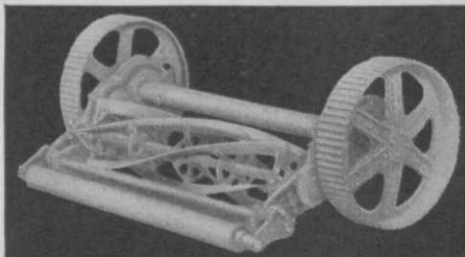
- Flags, Cups, Poles, Sprinklers.
- Seeders and Spreaders.
- Worthington Mowers and Tractors.
- Royer Compost Machines.

Write **TODAY** for 1932 Catalog.
GALLOWAY BETTS CO., INC.
 54 S. Water St., Aurora, Ill.

NATIONAL MOWER CO.

839 Cromwell Avenue St. Paul, Minn.

Where rugged endurance, sturdiness, and quality come first, the latest 1932 Model National Heavy Duty Fairway mower will meet your severest problem.



Using the most powerful frame, double sets of tempered steel cut gears in oil tight cases, Timken Bearings—it lasts longer.

PRICES ATTRACTIVELY LOW

Write for descriptive literature and prices on Fairway mower equipment and tractors. Thousands of NATIONAL mowers have satisfied owners covering every state.

TO YOUR OWN CLUB BE TRUE AND IT WILL FOLLOW—that before ordering Charge Checks, Score Cards, Guest Registers, Caddie Cards and other forms you will first see our line of standardised golf printed matter.

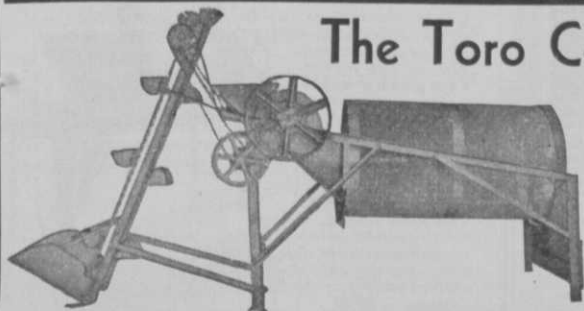
JOHN H. VESTAL COMPANY
 703 South La Salle Street - - Chicago

Racks HANDICAP Cards

John Willy Handicap Racks and Cards are standard with practically all the leading American golf clubs. *Write for booklet.*

JOHN WILLY, INC. 443 S. Dearborn St. CHICAGO, ILLINOIS

The Toro Compost Machine



Grinds and screens in one operation. Handles the material as fast as your men can shovel it in. Nearly a thousand of them in use at very small upkeep cost. Write for full information.

Toro Manufacturing Co.
 3042-3168 Snelling Ave., Minneapolis, Minn.

Arthur D. Peterson

Graybar Building

Telephone MOhawk 4-0410, 4050

420 Lexington Avenue

NEW YORK

Exhibit in Booth 28

National Greenkeepers' Golf Show, 1932

GOLF COURSE and ESTATE SUPPLIES

Write for 1932 Catalog

No connection with any other concern using my name

IDEAL GOLF EQUIPMENT

BULL DOG GANG MOWERS

POWER GREENS MOWERS

FLAGS,
POLES,
ETC.

IF IT'S SOLD BY

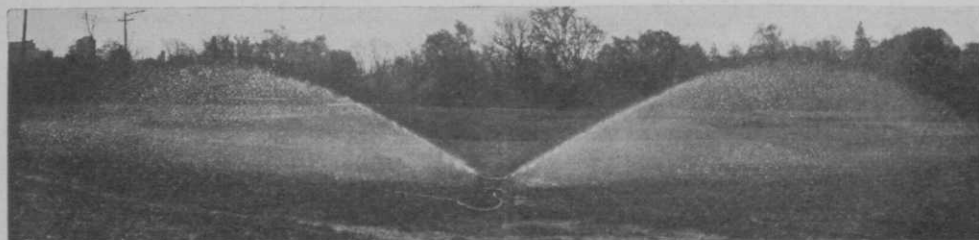
EVANS

IT'S GOOD

COMPLETE
EQUIP-
MENT

EVANS IMPLEMENT COMPANY

569-71 Whitehall St., S. W.
ATLANTA, GA.



New Perfection sprinkler in action.

available at slight extra cost—and a new type greens brush attachment.

Another new item to be displayed is a new running-in stand for back grinding cutting units to be sold at a low price. The stand will be supplied complete with electric motor.

SPRAY DISC IS MAIN FEATURE OF PERFECTION SPRINKLER

Plymouth, Mich.—A spray disc, eccentrically mounted, which revolves in operation and intermittently interrupts the stream of water to secure even distribution is a major feature of the new Perfection Sprinkler which the Perfection Sprinkler Co. is introducing to the golf field.

No adjustments are said to be necessary with this sprinkler. The device operates on any pressure from 15 lbs. to 60 lbs., with

continuously automatic slow motion at any pressure and in any position up to 45 degrees, regardless of strong winds. The sprinkler has an open nozzle. Sprinkling area is from 40 ft. to 100 ft. diameter, according to pressure used. The maker says the sprinkler will distribute 400 gals. to 1,200 gals. per hour with 3/16 in. (standard size) nozzles. The device is not automatically propelled.

ADALINK TO DEMONSTRATE CHICKWEED ELIMINATION

Jersey City, N. J.—Adalink Chemical Co. has arranged an exhibit of its Purbeck Chickweed Eliminator at the sixth annual

IMPROVES
SOIL

Hyper-Humus

for
LAWNS
AND GARDENS

Most economical and efficient for putting greens either in top dressing mixtures or incorporated into soil. Write us for literature and practical suggestions.

HYPER-HUMUS COMPANY

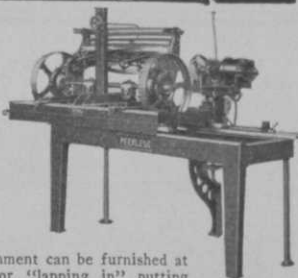
51 Park Place

Newton, New Jersey

The Peerless Mower Sharpener

NEW MODEL D
Grinds all type of power-driven, fairway, putting green and hand mowers without removing mower wheels or reel knives. Carriage has travel of 42 inches. Very fast and extremely accurate. 6-inch grinding wheel driven by 1/3 H.P. motor and V belt. Very quiet running.

A Reconditioner Attachment can be furnished at an additional price for "lapping in" putting green mowers with emery paste. This Attachment can be quickly clamped to the Sharpener by two clamps. Write for Catalog.



The Fate-Root-Heath Co. 432-468 Bell St.
Plymouth, Ohio

National Greenkeepers' Show. An actual demonstration will be given of how chickweed-infested turf is "cured" by spraying on Purfeck, eliminating the necessity for hand-pulling, digging or patching. The manufacturers state that they have now strengthened the solution to such an extent that it is possible to cover an entire acre for a considerable reduction in cost, even if there is as much as a 50 per cent infestation of chickweed.

PENNSYLVANIA'S GIANT MOWERS MAKE DEBUT IN 1932

Primos, Del. Co., Pa.—For 1932 Pennsylvania Lawn Mower Works is introducing two new fairway models, each using the Pennsylvania unit of all malleable, unbreakable construction, fitted with wide blade 6-knife reels and double edge bottom knives, Timken reel bearings, and other refinements.

The first model is a new Giant Quint using 36-inch units. The total cut is 14½ ft. wide, which is only slightly less than the width of cut with a 7-unit gang using 30-in. units, and costs about \$200 less.

Advantages of this model are, as mentioned by its makers, greater use of control, lower cost of purchase and maintenance, doing away with difficulties encountered with a 7-unit gang, such as crossing bridges and storing in buildings, as well as fewer general repairs.

The second new model is a 9-unit gang. Pennsylvania believes this is the largest grass cutter ever manufactured. With the usual 30-in. units in position, the width of cut is 21½ ft. If 36-in. units are used, the width of cut is 26 ft.

These outfits are both as easy of control as a standard Pennsylvania Quint, and the 9-unit gang can be converted into a 7 or 5-unit gang by easily removing end units of one or both rows. Another feature is that standard Pennsylvania frames can be coupled together, so that any present user of Pennsylvania fairway mowers can purchase the necessary parts to build any type of frame needed. Again, if a user has 9-unit frame and for any reason wants to separate it into a quint and trio, it can easily be done in a short time.

The Pennsylvania Greens Mower is made for 1932 with an 8-blade reel as standard, and produces a correspondingly finer cut than the earlier model.

ECONOMY

Quick Coupling, Adjustable Opening Valve



Recommended for all hoseless sprinkling systems for golf courses, where speed, economy and efficiency are desired. Write for name of our agent nearest you—he will give free demonstration.

ECONOMY IRRIGATION CO., Inc.
21 Spokane Street
SEATTLE, WASHINGTON

A complete service for

DAILY FEE GOLF COURSE PROJECTS

Surveys to determine potential play and profits.
Plans for group or individual ownership.
Course and clubhouse operating routine and maintenance.
Complete architectural and construction service.
Costs guaranteed by contracts.

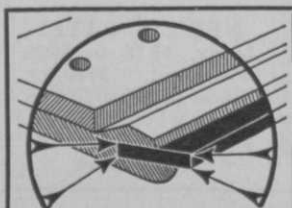
ROBERT H. HUMPHREYS & CO.
1569 Sherman Ave. EVANSTON, ILL.

DIAMOND Steel Center TRACTOR SPUDS



Long wearing — sharp until completely worn out—because of hard tool-steel center—outside wears away faster. Made in all sizes to fit any size or make of tractor. If your dealer can't supply you, write direct for sample or literature

DIAMOND CALK HORSESHOE CO.
4702 Grand Ave., Duluth, Minn.



DOWN Goes Mowing Upkeep!

Away DOWN in EXPENSES, but away UP in RESULTS—where Budd goes on the job. Conditions today make Budd a prudent necessity—with its four-times ordinary blade service. Budd uses the sensible safety razor principle—so its popularity is rapidly spreading. Don't delay investigating.—Write for Price List "G" with full details and new low prices. BUDD MFG. CO., RAVENNA, OHIO.

BUDD MOWER BLADES