

Winter Club Capitalizes Its Pro's Value

A CARD MAILED to the guest of the Kenilworth G. & C. C. of Sebring, Fla., shows how a pro's status as a business man means business for the club with which he is associated. After signing George Jacobus for the winter, the Kenilworth organization spread the news with the following copy:

Kenilworth patrons will be glad to hear of the appointment of Mr. George R. Jacobus as Kenilworth pro.

Mr. Jacobus is at the present time pro of the Ridgewood country club, Ridgewood, N. J., with which he has been identified for the past seventeen years. He is president of New Jersey Professional Golfers association and eastern representative of the most important committee of National P. G. A., and three times winner of the New Jersey State amateur and professional championship.

He enjoys the distinction of being the only "home bred" pro in the country who has had conferred upon him an honorary life membership by his club. Mr. Jacobus is not only a golfer of distinction, but is widely known as an expert on golf landscaping and maintenance.

He is already well and favorably known to many of Kenilworth patrons.

A. D. PETERSON SUPPLY CATALOG HAS 1932 EDITION

New York City.—Arthur D. Peterson, 420 Lexington ave., has issued his 1932 catalog in which extensive stocks of seed and fertilizer, Worthington and Pennsylvania mowers and tractors, Buckner sprinklers, Hardie sprayers, Royer compost mixers and other standard brands of equipment and supplies are presented. The Peterson organization does considerable mail-order business outside the New York metropolitan area so its catalog, which will be furnished free, on request, will have extensive interest.

N. E. TORO ISSUES 1932 CATALOG

West Newton, Mass.—New England Toro Co., 1121 Washington St., has issued its 1932 catalog of maintenance equipment and supplies. A full line of Toro equipment is described. Fertilizers, fungicides and other chemicals are listed. Motors, pumps, snow and ice equipment, Standard course equipment and tennis course supplies also are presented. Guy F. Patterson & Co., Pittsfield, Mass., and Griswold and Kylander,

Weathersfield (Hartford), Conn., are selling and service territorial representatives for N. E. Toro.

STUMPP & WALTER ISSUE 1932 BUYERS' GUIDE

New York City.—Stumpp & Walter Co., 132 Church St., has issued its 1932 golf turf supplemental catalog. This book is an extensive catalog of seed, fertilizer, equipment and supplies used for construction and maintenance of golf courses, and also contains buyers' data concerning tennis courts, polo fields, etc. Complete details of material listed is given. Copy will be sent free on request.

C. E. GRELE, PORTLAND, OFFERS NEW MOLE TRAP

Portland, Ore.—The new Acme mole trap, manufactured and distributed by C. E. Grele of this city, is claimed to employ an entirely new principal of design which makes the trap especially efficient, easy to set, safe to handle and safe to leave around the golf course. Made of rust-proof materials for durability and small in size for convenient handling, the device is said to incorporate all the desirable features of a good mole trap.

The Biological Survey of the Dept. of Agriculture states that moles may be successfully combated only by trapping. The Acme has been in use on the Pacific Coast for the past 2 years, and has the endorsement, according to Grele, of greenkeepers, park superintendents, gardeners, and nurserymen, as well as that of the Biological Survey operatives and the state agricultural agents.

For further details, address Mr. Grele at Green Hills, Portland.



ATKINS-DURBROW INTRODUCES NEW SOIL CONDITIONER

New York City.—At the recent greenkeepers convention, Atkins & Durbrow, Inc., 165 John street, made first showing of their new Sorbex moss peat, which is claimed to be ground at least 25 times as fine as other peats on the market and hence to be much easier to work into hard packed greens for aeration and loosening purposes.

For construction work in building new tees and greens, Atkins & Durbrow recommend their coarser GPM peat moss; Sorbex is advised where it is necessary to cor-

**IDEAL GOLF EQUIPMENT
BULL DOG GANG MOWERS
POWER GREENS MOWERS**

FLAGS,
POLES,
ETC.

IF IT'S SOLD BY

FVANS

IT'S GOOD

COMPLETE
EQUIP-
MENT

EVANS IMPLEMENT COMPANY
569-71 Whitehall St., S. W.
ATLANTA, GA.

rect the physical condition of established turf areas by working from the top down.

**ENGLISH HEADS EMPIRE SUPPLY
BUSINESS AT NEW YORK**

New York City.—Harold J. English, for 12 years in the golf course supply business, the last six of which have been as v.-p. and sales mgr. of Arthur D. Peterson, Inc., has established Empire Golf Course Supplies, Inc. An extensive line of equipment and supplies will be handled. The company's first catalog will be issued soon. Empire's address is 11 East 44th st., New York. Telephone number is MURray Hill 2-3070.

**SCHAVOLITE FOLDER DESCRIBES
TEXTOLITE COMPOSITION**

Long Island City, N. Y.—Schavolite Golf Corp. has just issued an interesting folder explaining in some detail the materials and manufacturing process used in moulding their "Textolite" composition golf club heads, as perfected and produced by General Electric Co.

The material used in these heads, says the folder, is 14-oz. army duck, impregnated with a special resin developed in the G. E. laboratories. The heads are moulded under 125,000 lbs. pressure at 360 degrees, the resulting product being a substance 8 times harder than wood, and with tensile strength, weight for weight, of mild steel.

**SAVE YOUR GREENS
AND BANK ACCOUNT -
WITH FUNGO
AND VEG-E-TONIC**



Operate your course for less this season.
Investigate—

FUNGO for Brown Patch

... and other fungus diseases. Also controls worms, grubs and other vermin. Very economical. Makes purchase of Lead Arsenate and other insecticides unnecessary. Our system will save you a pound of fertilizer without investigating

VEG-E-TONIC

Golfdom's soluble turf food. Cuts expense way down. Free from inert "filler." Send for the McClain Monthly Schedule System of green treatment. Mailed free on request. Our system will save you money.



McClain Bros. Co., 127 Second St., Canton, O.

Arthur D. Peterson

Graybar Building
Telephone MOhawk 4-0410, 4-0450
420 Lexington Avenue
NEW YORK

GOLF COURSE and ESTATE SUPPLIES

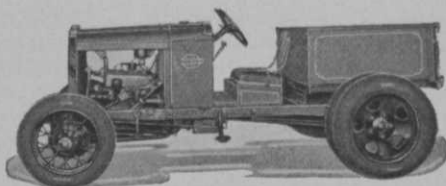
Write for 1932 Catalog

No connection with any other concern using my name

**NEW MODEL STAUDE GENERAL
UTILITY TRACTOR**

New York City.—The 1932 model of the Staude general utility golf course tractor was shown for the first time at the Greenkeeper's Show at Hotel Pennsylvania.

Although the Staude has several new features, the outstanding one is the new silent drive. The mechanism of this drive is quiet in operation and does not disturb the players on the course. Wheels are so con-



On the new Staude tractor wheels are easily replaced with Ford pneumatic wheels for paved roads.

structed they may be easily and quickly removed and pneumatic tired Ford wheels put on. This allows the Staude to be driven on paved roads and streets.

This model is equipped with an air cleaner breather cap on the oil intake and a new and improved air cleaner on the carburetor, giving protection to the motor. It also has a self starter, generator, battery and muffler.

ECONOMY



*Quick Coupling, Adjustable
Opening Valve*

Recommended for all hoseless sprinkling systems for golf courses, where speed, economy and efficiency are desired. Write for name of our agent nearest you—he will give free demonstration.

**ECONOMY IRRIGATION
CO., Inc.**
21 Spokane Street
SEATTLE, WASHINGTON

JACK DARAY

Winter Address: 1640 W. Beach Drive,
Biloxi, Miss.
GOLF ARCHITECT
Personal Supervision of
CONSTRUCTION AND MAINTENANCE

Its makers say of the machine: "It is light, speedy, powerful and noiseless. It pulls from 5 to 7 30-inch cutting units and rollers weighing up to 6 tons. It will also pull sprayers, plows and discs and is equipped with all steel dump body for hauling dirt and sod. An adjustable hitch is provided so that any make or style of implements such as mowers, sprayers and rollers may be attached quickly. The steel tractor wheels run on Timken roller bearings and owing to their wide surface and rolled edge rim, do not tear up or damage the turf. Repairs are seldom required."

The Staude has been manufactured continuously since 1916 and is sold on a money-back guarantee. It is sold and can be serviced by any Ford dealer. The E. G. Staude Mak-A-Tractor Company, St. Paul, Minnesota, will furnish additional information without obligation to anyone interested.

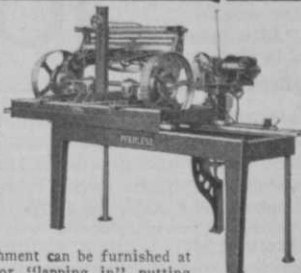
BAYER UPKEEP MOVIE GOES BIG AT GREENS SHOW

New York City.—A feature of the recent N. A. G. A. Convention and Show was the educational motion picture film "Golf Hazards," presented by Bayer-Semesan, and showing a golf match between the greenkeeper and his green-chairman an unusual scene of a Rhizoctonia fungus actually growing and producing its mycelium (the cobweb-like growth seen in the early morning on brown-patch spots), views of various types of brown-patch and how to control them—and interesting views of clubhouse and courses.

This one reel film is available either in standard 35 mm. or home movie 16 mm. sizes for showing at greenkeepers' meetings or other assemblies of persons interested in turf by writing to the Bayer-Semesan Co., 105 Hudson st., New York, N. Y., manufacturers of Nu-Green and Semesan. There is no charge for loan of the film.

The Peerless Mower Sharpener

NEW MODEL D
Grinds all type of power-driven, fairway, putting green and hand mowers without removing mower wheels or reel knives. Carriage has travel of 42 inches. Very fast and extremely accurate. 6-inch grinding wheel driven by 1/3 H.P. motor and V belt. Very quiet running.



A Reconditioner Attachment can be furnished at an additional price for "lapping in" putting green mowers with emery paste. This Attachment can be quickly clamped to the Sharpener by two clamps. Write for Catalog.

The Fate-Root-Heath Co. 432-468 Bell St. Plymouth, Ohio



DIAMOND Steel Center Tractor Spuds

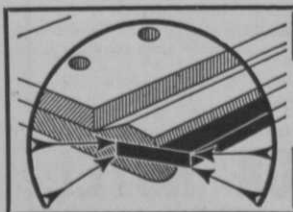
Will keep themselves sharp after many miles of service. Diamond Hardened Tool Steel Center lengthens their lives. Leaves clean-cut perforations. Will not damage turf. Write for information

Diamond Calk Horseshoe Co.
4702 Grand Avenue, Duluth, Minn.

IMPROVES SOIL Hyper-Humus for LAWNS AND GARDENS

Most economical and efficient for putting greens either in top dressing mixtures or incorporated into soil. Write us for literature and practical suggestions.

HYPER-HUMUS COMPANY
51 Park Place Newton, New Jersey



DOWN Goes Mowing Upkeep!

Away DOWN in EXPENSES, but away UP in RESULTS—where Budd goes on the job. Conditions today make Budd a prudent necessity—with its four-times ordinary blade service. Budd uses the sensible safety razor principle—so its popularity is rapidly spreading. Don't delay investigating.—Write for Price List "G" with full details and new low prices. BUDD MFG. CO., RAVENNA, OHIO.

BUDD MOWER BLADES