

Music Colony Golfers Get Model Home for \$15,000

By HOWARD A. GOODSPEED

Architect

Here are plans and description of a \$15,000 clubhouse admirably designed to satisfy the demands of a small town country club of the type where social activities are as important as golf.

THIRTY YEARS ago a group of golf enthusiasts at Peterborough, N. H., amused themselves by knocking the ball around a meadow field on one of the farms of the town. A small tent was erected and on Thursday afternoons the ladies would come out, serve refreshments and enjoy a social time. One of this group of enthusiasts was Edward McDowell, the famous American composer and head of the music department of Columbia university.

So much enthusiasm was awakened that Professor McDowell purchased, out of his own pocket, a piece of land adjacent to what is now the Edward McDowell Memorial Musical colony, devoted each summer to the encouragement of creative art. This land he deeded to a group of men to be held by them, in trust, for the benefit of the citizens of the town of Peterborough who wished to enjoy golf and kindred sports.

Other generously inclined people joined in the movement and soon a nine hole golf course was laid out and constructed and a small but attractive clubhouse erected.

Social Events Crowd Calendar

During the thirty years of its existence, the Peterborough Golf Club has grown to a membership of over 300. Golf, tennis, archery, bowling and winter sports are enjoyed. Social gatherings are held Thursday afternoons in summer, at which the townspeople and summer residents join in listening to programs of unusual interest. Talks by well known people, musical programs by members of the McDowell col-

ony, skits and exhibitions by the Sargent School Camp of Boston university and by other summer colonies in the vicinity have added greatly to the enjoyment of club members and to the attractive life of this beautiful community of the New Hampshire hills.

Inasmuch as it was the idea of the donor of the land to make the club a community affair rather than an exclusive organization, he stipulated that fees should be kept within the reach of all. Originally the dues were \$3.00 a year, then \$5.00 and now full privileges may be had for only \$7.50 for the season.

New Clubhouse Replaces Burned One

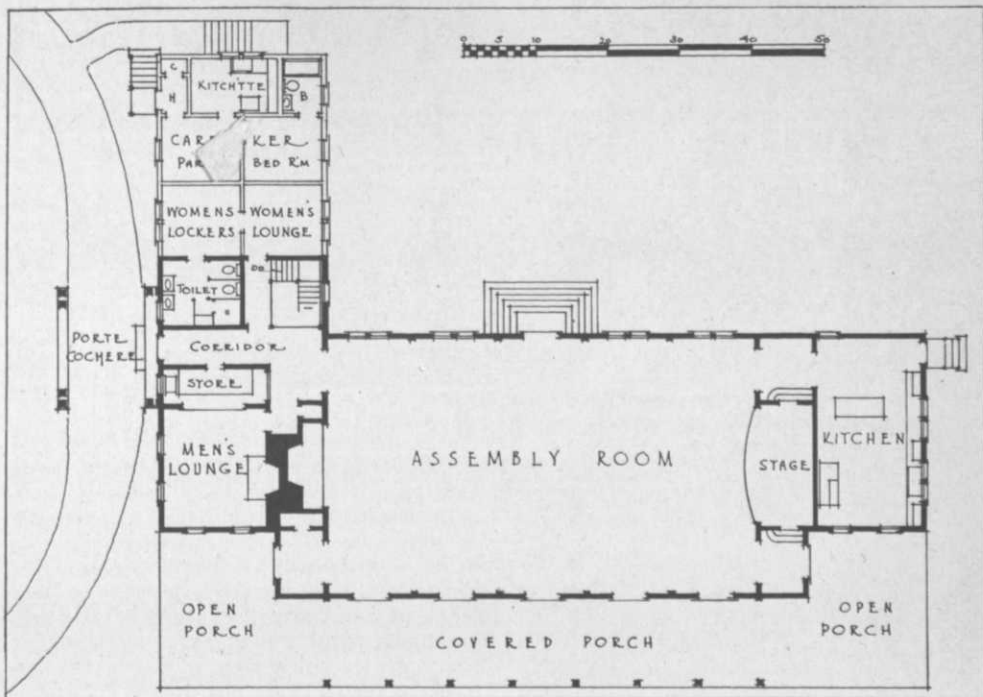
This season has marked a great transition in the club's existence. In July the clubhouse burned and, as it was imperative that a new and larger building be erected, a committee was appointed to secure plans. Three days later, at the regular Thursday meeting, sketches were submitted and members and friends were invited to contribute the necessary funds.

The accompanying plans and picture show the building as it will be when fully completed. At the present time only the portions on the plans in solid black will be built, but it is hoped that the wing at the rear can be added at no distant date. The present contract calls for an expenditure of approximately \$15,000 and work on the building has already been started.

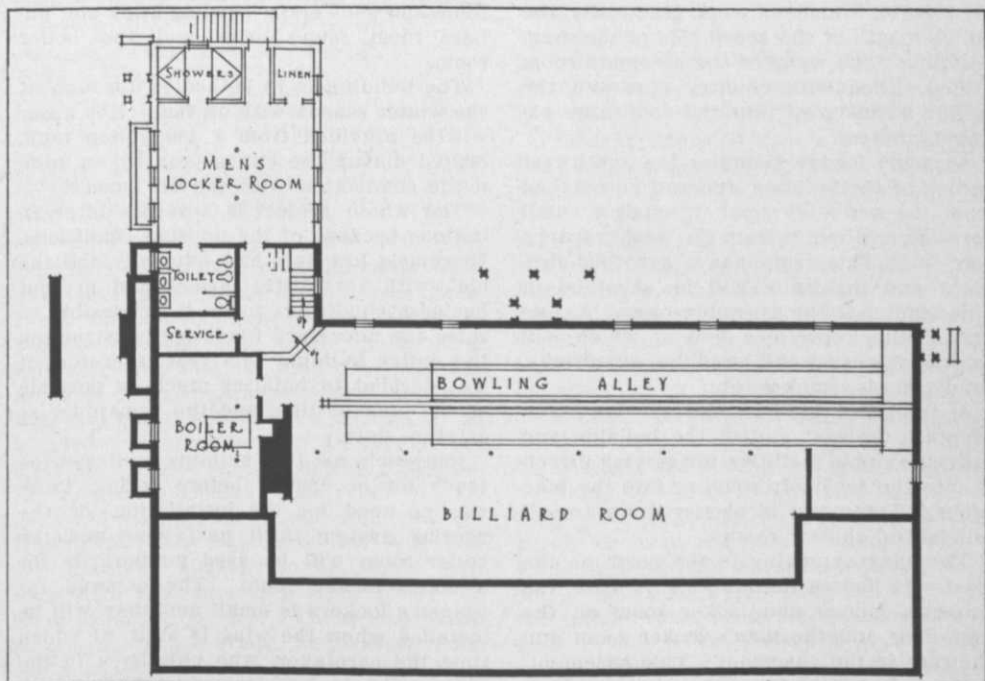
Standing among the pines and facing Mt. Monadnock, the location of the building at the crest of a hill commands a view for forty miles up and down the Contoocook River Valley.

Assembly Room Is Central Feature

The approach, over a winding driveway, leads to the port cochere on the west side where the entrance door opens into a corridor which leads to the assembly room, the central feature of the building. This room, 35 ft. wide by 60 ft. long, has a large fireplace in an alcove at one end and a small stage at the opposite end. French



First floor (above) and basement (below) of Peterborough's new \$15,000 clubhouse. The wing not drawn in solid black will be added later when club finances permit.





Architect's preliminary sketch shows how the Peterborough clubhouse will look when finished.

doors on the south lead to the wide covered porch which extends practically the entire length of the south side of the main building. The walls of the assembly room are sheathed with country pine and the ceiling extends up into the roof and exposed trusses.

A men's lounge occupies the southwest corner of the building and can be reached from the assembly room through a small corridor or directly from the west entrance corridor. This room has a generous fireplace and the walls will be sheathed in pine similar to the assembly room. At one end of this room is a bar, at which will be sold the usual golf supplies, soft drinks, candy, cards, smokes, etc.

A combined kitchen and serving room occupies the east end of the building and provides ample facilities for serving directly into the assembly room or into the pine grove. This room is plastered, as are all toilets and shower rooms.

The wing extending to the north on the west side houses the caretaker's suite, the women's lounge and locker room on the first floor and the men's locker room and showers in the basement. This basement, reached by stairs from the west corridor,

provides, in addition to the men's locker room and showers, a bowling alley and billiard room, men's toilet and the boiler room.

The building is to be heated throughout the winter season with oil fuel. Hot water will be provided from a 200 gallon tank, heated during the entire year by an automatic connection with the oil burner.

The whole project is a rather interesting one because of the unusual conditions. Extremely low dues had, naturally, left the club with very little surplus and present business conditions made it impossible to raise the necessary funds for constructing the entire building this year, therefore it was decided to build as much as possible at the present time and the remainder at a future date.

Inasmuch as the building will not be ready for occupancy before spring, there was no need for the installation of the heating system until next year and the boiler room will be used temporarily for a men's locker room. The demand for women's lockers is small and they will be installed when the wing is built, at which time the caretaker, who now lives in the town, will be taken care of in the building.