

Bridlespur Club, Kirkwood, Mo., finds irregular shape of pool fits scenic scheme.

# Swimming Pool Has Major Value to Live Clubs

By H. D. MACKAY

SEVERAL of the foremost country clubs have recently installed swimming pools on their properties adjacent to the clubhouse itself, where the locker rooms are used both by bathers and golfers. The plan is proving highly satisfactory and is resulting in a marked increase in the club attendance.

Among the more interesting of these installations the swimming pool of the Bridlespur Hunt Club of Kirkwood, Mo. This pool is irregular in shape, and the surrounding area is beautifully landscaped. The deck around the pool is of flagstone, affording a non-slip surface for bathers. It is located just a short dis-

## TREKS WATERPROOF PAPER SLIPPERS

For use in Shower and  
Locker Rooms,  
Gymnasiums, etc.

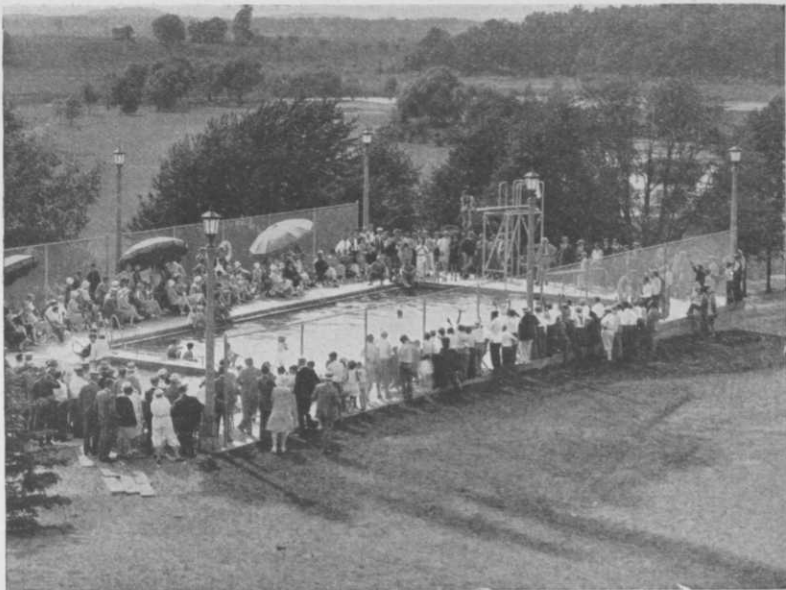
WRITE FOR  
SAMPLES  
AND PRICES



KEEP FEET CLEAN  
AFTER BATH.

GIVE PROTECTION AGAINST  
CONTAGIOUS  
FOOT DISORDERS.

**CHARLES F. HUBBS & CO.**  
389 Lafayette St. New York City



South Bend's Country Club's pool is fine example of modern golf club installation.

tance from the clubhouse. Numerous benches are provided for the comfort of swimmers and spectators and large, colorful sunshades enliven the scene. A photograph of this unique pool is shown herewith. Notice the convenient placing of the four ladders, so that one is easily accessible from any part of the pool despite the unusual shoreline.

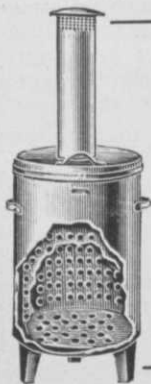
Another attractive pool is that of the South Bend C. C., at South Bend, Ind. This pool, opened August 25, 1929, is highly attractive, though of more conventional design than the Bridlespur pool. Located in a rolling country and naturally landscaped, it has an artistic setting. It is correctly proportioned to accommodate official swimming contests, being 30 ft. wide, 60 ft. long and 9 ft. 6 in. deep at the

deepest point. The photograph reproduced herewith shows this pool on the day of opening.

Other clubs recently including swimming in their available sports are the Hyperion C. C. of Des Moines, Ia., the Onwentsia club of Lake Forest, Ill., the North Shore C. C. of Menasha, Wis., the Winter Club of Lake Forest and the Springfield C. C. of Springfield, O. This last mentioned club has its pool in process of completion, to be opened soon.

**Watch Sanitation.**

Of major importance to country clubs and others considering the installation of swimming pools is the matter of sanitation. The water entering the pool must be free from all contaminating influences, and must remain so. This necessitates an



**“BURN-ALL” INCINERATORS**

**Spark-Proof—Outdoor—Oderless**

For quick and safe disposal of Garbage, Refuse, Rubbish, Leaves, Grass Cuttings, in fact BURN-ALL INCINERATORS burn anything burnable.

- No. A1—Capacity 2¼ Bushels.....\$32.50
- No. 4—Capacity 4½ Bushels..... 52.50
- No. 8—Capacity 8¾ Bushels..... 92.50

MADE AND GUARANTEED BY

**SETH SALES CORPORATION**

62 W. 14th Street

New York City

When you mention GOLFDOM the advertiser knows you mean business.

PATENTED  
**EX-RAY**  
ROLLTEX MODEL  
SPORT HAT



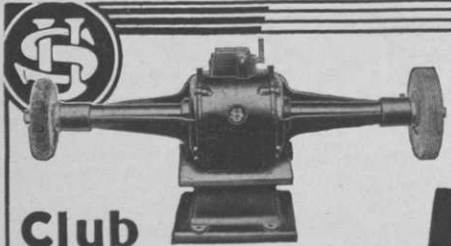
**The Ideal Golf Hat  
PROTECTS THE EYES**

A sensation! Made of fine texture cloth—roll it up, fold it up—carry it in pocket or golf bag—patented one piece brim smooths right back into shape after crumpling. Patented transparent eX-Ray brim gives eye protection and clear vision. Three colors—white, gray and tan. Retail at \$1.50. Price to pros and dealers—\$12.00 per dozen: \$10.50 per dozen in 3 doz. lots. Big Profit—Big Demand! Order Now!

Patented and Controlled Exclusively by  
**SUPERIOR HAT CO. ST. LOUIS**  
World's Largest Manufacturer of Sun and Sport Hats



Springfield C. C. tank under construction, showing openings for installation of underground lights.



**Club  
Polishers**

Rugged U. S. polishers embody powerful motors of 3450 R.P.M.; heavy duty ball bearings in dust-proof, grease-tight boxes, etc. Cable, plug furnished.

(Wheels, as desired, extra.) Specify A.C. or D.C., voltage and cycle when ordering from your jobber or direct from—

**The United States  
Electrical Tool Co.**

2459 West Sixth St.  
Cincinnati, Ohio

**\$99**

efficient filtration plant, and the introduction of an active germicide in the water, to render harmless any exudations from swimmers' bodies. In practically every modern installation, also, the equipment includes the necessary recirculation system for effecting a complete turnover of the pool water every so often. The usual period of turnover is from four to twenty-four hours, but between seven and eight hours is the recommended period. The usual equipment also includes a suction cleaner, which enables the operator to remove the sediment from the bottom of the pool without draining the water.

Chlorine and ozone are the two most popular active germicides, ozone being a more recent development. An electric chlorinator has recently been perfected, and an electric ozonator is now in process of completion, by one of the country's leading swimming pool equipment manufacturers, which, in addition to accuracy of distribution is practically automatic in control.

### Night Lights for Pools.

Another recent innovation in swimming pool construction is the underwater lighting system. This greatly enhances the utility and beauty of any pool, and insures maximum safety at all times. It gives crystal-clear, evenly diffused light throughout the water of the pool at night, and can, by the introduction of colored lenses, be obtained in a multiplicity of color schemes. It increases the enjoyment of the spectator as well as the swimmer, who seems from the shoreline to be moving through light rather than water. The Springfield C. C. will have the first outdoor pool so equipped.

Most of the country clubs installing swimming pools are doing so with the intention of freezing the pool over in winter and so providing an exhilarating winter sport for their members. If the pool is set in a natural or artificial hollow, it is advisable to use enough water to completely freeze over the pool proper, as this will insure an even temperature of 32 deg. F. all winter, thus preventing the action of frost through the structure.

### SCHAVOLITE HAS NEW MEN ON FORCE

New York City.—Schavolite Golf Corp., 16 W. 45th St., announces the appointment of Robert W. Kilpatrick as general manufacturing superintendent of the Schavolite plant. Bob was born at St. Andrews in 1897 and came to the States in 1900 with his father, who is with Spaldings. Bob, per the usual custom, is related to most of the pro golf notables who hail from St. Andrews.



Bob Kilpatrick

Jack Adams. In 1925 he returned to the Spalding organization for the Spalding Springfield plant prior to joining Schavolite.

The Boston office opened at 115 Federal St., with Harold Cosgrove in charge, is doing a good business.



H. J. Cosgrove

## An EVERSON SWIMMING POOL makes a Country Club of any Golf Course

Nothing will be more appreciated by golfers than a good swimming pool right at the Club. Pools that are properly designed, built and managed usually prove an excellent investment for golf clubs. Everson Pools are always popular for the water is always clear, sparkling and of drinking purity.

### Specialists in SWIMMING POOL

Design - Construction - Equipment - Maintenance

- |               |                             |                  |
|---------------|-----------------------------|------------------|
| Filters       |                             | Sterilizers      |
| Heaters       | Chemicals                   | Pumps            |
| Hair Catchers |                             | Suction Cleaners |
| Pool Fittings |                             | Spring Boards    |
| Ladders       |                             | Diving Towers    |
| Toys          | Rafts                       | Floats           |
|               | Underwater Lighting Systems |                  |

Much informative data has been compiled for distribution to officials of golf clubs which will be sent if requested.

EVERSON FILTER CO.

648 No. Green St. Chicago, Ill.

## EVERSON SWIMMING POOLS

## B. R. LEACH RIVERTON, N. J.

### Consulting Turf Specialist

(Originator of the lead arsenate treatment of turf)

for  
GOLF COURSES  
and  
PRIVATE ESTATES

Study, diagnosis and conditioning recommendations. Special attention given to grub, earthworm and weed control.

Write for details of time available and terms.