



1. Material excavated from ditch was placed on corrugated iron sheets to keep turf clean.
2. Placing a 700-foot line of Armo perforated pipe through the affected area
3. Wyes were placed at frequent intervals to provide for placing laterals as needed.

Eliminating a Wet Fairway as a Play Hindrance

By ELTON MARINE

Greenkeeper, Verity Park Golf Club, Middletown, Ohio

THE course of the Verity Park Golf Club at Middletown, Ohio, is an example of a piece of land, previously useless, made available in itself and to surrounding property by well-planned improvements. The course is on a strip of ground once periodically inundated by the Miami river adjoining, but now protected by a levee of the Miami Conservancy district. Thus insured, the property has been built up over a period of ten years until

it is now a garden spot enhanced by an attractive clubhouse and other buildings, and by a turf which represents constant care throughout this period.

However, one problem until recently continued to remain unsolved. That problem was subdrainage. Because of the proximity of the river, ground water rises during wet seasons, and longer time than normal is required after rains for the low spots to pass from the puddle or spongy

The Peerless Lawnmower Sharpener



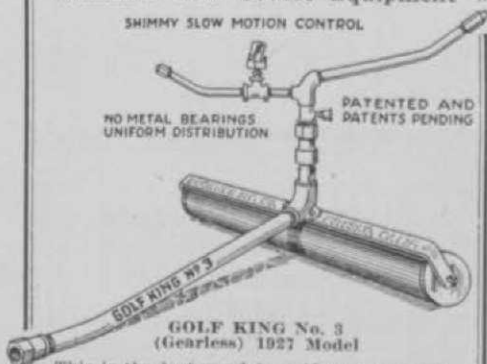
HUNDREDS OF GOLF CLUBS, large and small, now use the Peerless Lawnmower Sharpener.

The Peerless Lawnmower Sharpener is the only machine that sharpens all makes of Power, Horse and Hand Mowers *scientifically—quickly—perfectly*—does the work as nothing else can. Operated by 1/3 H. P. Motor—attach it to your lamp socket. Special Grinding Wheel for sickles, scythes, etc. Skate sharpening attachment included. Will save its cost the first season. Write for catalog and list of users.

THE FATE-ROOT-HEATH CO., 388 Bell St., Plymouth, Ohio

THE GOLF KING SPRINKLERS Standard Golf Course Equipment

SHIMMY SLOW MOTION CONTROL



This is the last word in golf course sprinklers. Guaranteed by the LARGEST AND OLDEST EXCLUSIVE SPRINKLER FACTORY. The pioneers in golf course irrigation, slow motion sprinklers and originators of the HOSELESS SYSTEM of Golf Course watering. We can cut your irrigating cost 50%.

GOLF KING No. 3 will cover greater area more uniformly on the same pressure than any other sprinkler ever made. Nothing to wear out or get out of order. Write for literature. Representative wanted in each district.

BUCKNER MANUFACTURING CO.
Fresno, California

stage to the dry stage suitable to playing.

One end of the course in particular gave trouble. This was due partly to the fact that the fairway is across a flat, low area and partly because it is at the foot of a rise from which comes both surface water and spring seepage.

Strangely enough, the matter of draining this wet area was brought to a head, not because of complaints from members, but because the turf never got quite dry enough to keep it from being rutted by the mower tractor. It seems that while many members were wont to venture over this course when it was still too wet for either its good or their comfort, few thought to report the matter other than by complaints among themselves.

Not until the turf began to get in such a condition that it could not revive between wet spells, and extra expenses for upkeep began to mount up, did the management seriously consider the matter of subdrainage.

Drainage Plan

The scheme finally adopted for the season of 1926 was to install subdrainage consisting of 8-inch Armeo corrugated iron pipe with perforation in the upper half to collect ground water. A line 700 feet long was laid across the middle of the area to be drained, leading from a catchbasin at its upper end to a city storm sewer manhole at the lower end. Possible future extensions of the drainage system were provided for by a number of intermediate catchbasins and wyes.

The pipe was supplied in 12-foot lengths with wye connections welded on and was provided with hook bolts for making field connections. The sod was neatly cut and rolled up in strips 18 inches wide. The trench was then dug to a depth of approximately two feet, the catchbasins placed, and the pipe laid and connected. Backfilling was made and the trench thoroughly watered, and after settling the trench for a few days, the sod was replaced.

The benefits of this line were immediately apparent, but the need for a parallel line was soon seen. An additional line, 200 feet long and approximately 40 feet away, was laid with a diagonal connection leading to a catchbasin on the main line. (Continued on Page 40)

Used Golf Balls Purchased—Highest prices paid. Any quantity, any condition. For full information write, GOLF BALLS, Box 10, GOLFSDOM.

Which of this seasonable equipment do you need

Quick?

FLAGS--FLAG POLES
TEE STANDS--TEE MARKERS
BALL WASHES
MOWERS--ROUGH CUTTERS
DUMP CARTS
COMPOST MIXERS
COMPOST DISTRIBUTORS
SEED--BENT STOLONS
TRACTORS

Wire—Write—Phone

HAL.
BILLIG

LOW COST

POWER!
for Every
Job on the Course



**CENTAUR
TRACTOR**

For every job, on any course—nine or eighteen holes—for mowing fairways, cutting rough, hauling, plowing—any job that requires power, the Centaur is the ideal power unit. Its powerful motor negotiates the hardest tasks, yet this tractor costs but a few cents an hour to operate! Light weight, flexible, works closely around bunkers, etc. Uses 3-unit mowers.—ANY MAKE—attached in a few moments.

Write for Illustrated Literature.
The CENTRAL TRACTOR COMPANY
200 Central Ave. Greenwich, O.



1. Backfill settled and ready for sodding over. Corrugated iron sheets were placed over intermediate catchbasins to carry sod.
2. View of completed installation, taken just after replacing the sod.
3. Verity Park is an example of what can be done with reclaimed waste land.

The end catchbasins were provided with circular iron gratings, and all intermediate catchbasins covered with sheets of corrugated metal and overlaid with sod. The casual observer today will never know a drainage line is there, as the turf over the trench has now grown together.

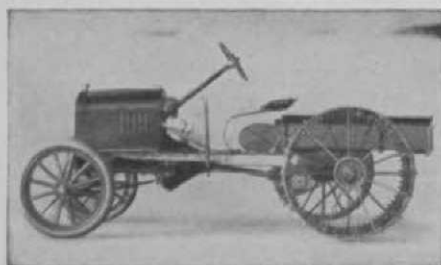
To keep the trench material from working into the turf during the installation of the pipe, corrugated iron sheets were laid along the ditch and all excavated earth piled on them. Because of this precaution, the grass was in perfect condition when the sod was replaced over

was about 39 cents a lineal foot of drain.

The success of the installation from the standpoint of the golfer was proved conclusively recently when a succession of heavy downpours occurred. An excursion over the course the following morning showed that, while elsewhere pools of water were still standing in depressions and a general condition of sponginess prevailed, the area drained by the corrugated pipe was practically solid underfoot, and after a few hours of sunshine would be ready for either player or tractor to negotiate without damage to the turf.

Recent observations it is apparent that the drainage investment will pay for itself in the increased value of the course and in lessened cost of keeping the turf in proper condition. Its success, it may

Recent observations it is apparent that the drainage investment will pay for itself in the increased value of the course and in lessened cost of keeping the turf in proper condition. Its success, it may



**WORLD'S LOWEST PRICED
GOLF COURSE TRACTOR**

**STAUDE GOLF
COURSE TRACTOR**
PRICE ONLY \$420, f. o. b.

Fully Guaranteed

In universal use, weight 1625
pounds, easily pulls mower
cutting 142 in. swath, etc.

Write today for full information

**E. G. STAUDE
MAK-A-TRACTOR CO.**

2696 University Ave. ST. PAUL, MINN.

The first **American**
book on golf course
architecture

THE LINKS

By Robert Hunter

Leading golf architects and players throughout the world pronounce this volume a classic that is bound to have a strong influence in bettering the character of golf course design.

It is illustrated with many illuminating plates showing some of the world's famous holes—and some of the common and expensive faults in course design.

Look at "The Links" before you leap into design or remodeling of a course.

"The Links" is \$4 a copy

Order from Book Department

GOLFDOM
225 North Michigan Avenue
CHICAGO, ILL.

be said, is due to observing two general rules which are of value in connection with any drainage improvement. These are: (1) specify a drain which does not have to be dug up at periodic intervals for repairs or to maintain its drainage efficiency; and (2) make provision for extension of the system, should early experience indicate that this is required. By observing these rules, any course can in time make itself noted for being the first in the neighborhood to become playable after rains.

Crab Grass Treatment

Crab grass, as you know, is an annual grass. Its seed is very strong and grows almost any place. This grass has been found mostly about 200 miles north of the Mason-Dixon line. It puts in its first appearance in a beautiful, light-green growth from the first of June until perhaps the first of July, depending upon the heat conditions of that spring in that particular location. Numerous inexperienced men are under the impression that they are getting a very wonderful putting green grass or the fairways are improving every day, but it is the annual crab grass seed germ which has been deposited the year before. About the middle of July this crab grass is at the point of turning into a brown texture, the seed is maturing very quickly, and toward September the seed has matured, falls from the crab grass into the ground to form the evil that you have had in previous years. In the putting greens and tees there are two practical ways of eliminating this grass; one is having a group weeding the green thoroughly, taking the crab grass out by the roots before seed time comes, but if the green is too

HICKORY

We have engaged in manufacture of hickory products for the past twenty-six years, and can furnish pro finished hickory golf shafts of the very finest quality.

I. R. Longworth Co., Somerset, Ky.

Used Golf Balls Bought

Check sent 48 hours after their receipt. *Any Quantity.*

GOLF BALL SUPPLY

1311 Chestnut St. Louis, Mo.



Detroit Rough Cutter when not in use does not interfere with utility of the Fordson for hauling. Shown here equipped with W. & K. Golf Course wheels.

No More Hoof Marks Cut Your Rough in One Day

With the Detroit Rough Cutter the heaviest grass is quickly and easily cut, the bunkers are trimmed close and the rough along the fence is cleanly cut. The Detroit Rough Cutter is attached to the Fordson without alteration. It has two sickle speeds, is ball bearing equipped and is built to stand most severe usage. This rough cutter is used on Henry Ford's Golf Course and by hundreds of other up-to-date clubs.

For Full Information Write To

DETROIT HARVESTER COMPANY
5450 Jefferson Ave., West, Detroit, Mich.



TRACTOR WHEEL SPUDS

The R. H. (Wear Well) Spud

SQUARE SHOULDER
SPUD EASILY REMOVED

Wears Like Horse Shoe Calks

Send ten cents in postage for sample spud
State Make of Tractor Used

R. S. HORNER
MANUFACTURER
GENEVA OHIO

Don't forget

the Greenkeeper's equipment
for your golf course

CHAS. ERICKSON CO.
2516 Colfax Avenue, South, Minneapolis, Minn.
Write for descriptive literature