

the town soon had a first class golf course for a small community.

I had the pleasure of laying out the course for these people and taking care of its construction. While the regular greens were being built play was on temporary greens which were fairly satisfactory as the course was located in the blue-grass country and had a fine growth when we got the land.

That course always has had all the play it could care for and golf interest grows each year in the town. The house on the place that was purchased was turned into a locker-room and small club room where soft drinks could be purchased. Although it was far from a country club with all of the "ritziness" that term implies, I maintain that it is a good golf club and a worth-while example of the wisdom of a small town building a good golf club rather than a poor country club.

Two Sand Green Cup Ideas Answer Plea

A COUPLE of solutions to the sand green cup difficulties set forth by a greens chairman in the June issue of GOLFDOM were promptly forthcoming. At Anaconda, Mont., the local country club had the good fortune to get W. C. Capron, mechanical superintendent of the Anaconda Copper Mining Co., to work out for it the cup shown in the accompanying sketch. Of this cup Mr. Capron says:

"We originally had single cups, but they were a decided nuisance, as every time the track was swept for putting, the cup had to be cleaned by hand.

"The present cup was adopted several years ago and is in rather general use in Montana today. We find this a most satisfactory cup for sand greens, as the inside cup can easily be pulled and emptied, and very little sand gets into the outside cup. Of course, the outside cup has to be cleaned occasionally, but not often.

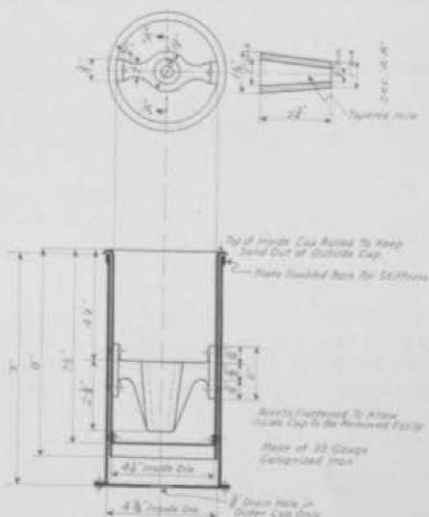
"The flag support in the inside of the cup is a small casting riveted into the inside cup. You will note that the taper on the hole for supporting the flag is rather sharp. We found that a slight taper would allow the ferrule on the flag to bind, whereas the more pronounced taper does away with that.

"In setting this cup, the outside cup is set permanently in the ground with the top $\frac{1}{4}$ inch below the surface of the sand."

At Garden City, Kan., the Garden City

Country Club tried several ways and finally found most satisfactory the following sand green cup idea which is described by W. J. Straup:

"We had cups 24 inches deep made from galvanized iron about 14 gauge. These fit snugly around the regulation cups which are held in place inside of these long



sleeves by four knurls or round-headed rivets ground on one side so that there are shoulders to hold the regulation cup from dropping down. Then we use a prepared auger arrangement for lifting the sand out of the cups about once a week.

"This not only gets away from the sand in the cups but it gives a good position for the regulation cups, making the holes uniform in size and not sloping to the cup as the general rule."

Plan Holding a Golf Show at Detroit

PRELIMINARY plans are being made for holding exposition and convention relating to the business end of golf. The National Greenkeepers' association is making overtures to the Club Managers' organization and to the Professional Golfers' association with the purpose of allying the three bodies in an exposition to be held at Detroit early in March, 1928. It is the suggestion of the greenkeepers that each association hold its annual convention during the time of this meeting and that the affair be strictly confined to the business operations of golf.