

## How Chicago Golf Waters Fairways

BY JOHN MCGREGOR

THE fairway watering system in use at the Chicago Golf Club, which was installed six years ago, was at that time considered the most up-to-date in fairway irrigation. Luckily there was a pond conveniently located on the course, which was enlarged to the extent of a capacity of 3,000,000 gallons, and which, as well as being a source of supply for the course, made two beautiful water holes. A six-inch well, 360 ft. deep, was sunk near the pond to maintain the supply. A shallow waterway was built about 75 feet long, with irregular stones protruding six or eight inches, which break and aerate the water as it flows into the pond. An air compressor is used to lift the water from the well, the capacity of which is 65 gals. per minute. The water is then pumped from the pond by a centrifugal pump (capacity 450 gals. per minute) to an elevated tank, 125 ft. elevation, capacity 50,000 gals. These pumps are driven by electricity.

The water mains are 6-inch cast iron and the extensions are 4-inch cast iron, reduced to 2-inch galvanized pipe for the greens.

There are hydrants placed every 150 ft. in the rough. The openings are 2-inch. The pressure at the hydrants is 75 lbs. A gate valve controls every fairway, which eliminates the necessity of closing down the whole system if anything should go wrong.

The operation of the system is something which requires some study. It was about two years before I perfected this, being too optimistic in expecting the rain which did not come. I waited too long before I started, so that I never did catch up with fairways the first year.

After the first week in June one cannot depend on regular rains. A good soaking rain penetrating about three inches, will hold the fairways for ten days, therefore it is necessary the fourth day after a good rain, to start watering. It takes seven days to completely water our fairways.

### Used Golf Balls Bought

Check sent 48 hours after their receipt. *Any Quantity.*

### GOLF BALL SUPPLY

1311 Chestnut

St. Louis, Mo.

# Making a birdie in Maintenance



WITHOUT danger of damaging the velvety turf, the rubber shod "Caterpillar" pulls a five gang mower or an eight ton roller . . . both at one operation if you will . . . up hill, down hill, or over wet turf or sand.

The heavy jobs, too . . . grading, road building and winter snow removal . . . all are within the scope of "Caterpillar's" range of usefulness. Golf courses make the most of "Caterpillar" surplus power.

## CATERPILLAR TRACTOR CO.

Executive Office: San Leandro, California, U. S. A.

Sales Offices and Factories:

Peoria, Illinois      San Leandro, California

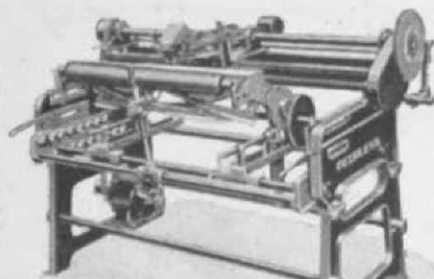
Distributing Warehouse: Albany, N. Y.

New York Office: 50 Church Street.

Successor to

BEST C. L. Best      The Holt Manufacturing Company      HOLT

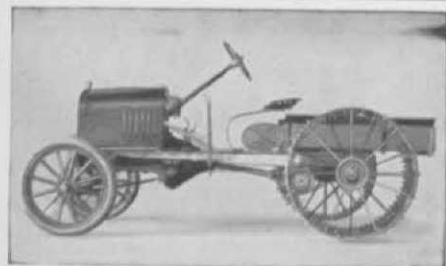
# The Peerless Lawnmower Sharpener



HUNDREDS OF GOLF CLUBS, large and small, now use the Peerless Lawnmower Sharpener.

The Peerless Lawnmower Sharpener is the only machine that sharpens all makes of Power, Horse and Hand Mowers *scientifically*—*quickly*—*perfectly*—does the work as nothing else can. Operated by 1 H. P. Motor—attach it to your lamp socket. Special Grinding Wheel for sickles, scythes, etc. Skate sharpening attachment included. Will save its cost the first season. Write for catalog and list of users.

THE FATE-ROOT-HEATH CO. 888 Bell St., Plymouth, Ohio



WORLD'S LOWEST PRICED  
GOLF COURSE TRACTOR

STAUDE GOLF  
COURSE TRACTOR

PRICE ONLY \$420, f. o. b.

Fully Guaranteed

In universal use, weight 1625 pounds, easily pulls mower cutting 142 in. swath, etc.

Write today for full information

E. G. STAUDE  
MAK-A-TRACTOR CO.

2696 University Ave. ST. PAUL, MINN.

At the Chicago Golf Club the type of sprinkler used throws 590 gals. per minute, and covers an area of 80 ft. in diameter. It usually takes 20 minutes to get a sufficient amount of water to penetrate the required three inches. On high spots which dry out more rapidly, the sprinkler is left 30 minutes. I have found this is sufficient to keep the fairways in good condition.

It requires six men to operate this system; two men handle the sprinklers and one man attends to the pumps. They work twelve hours, when they are relieved by the night men, who also work twelve hours. It is necessary to work twenty-four hours a day to cover the course in seven days.

## Green Section to Meet August 29

THE United States Golf Association Green Section will meet at Washington on August 29, 1927, so that member clubs of the Green Section may send a representative to visit their experimental plots. It is hoped that every member club will find it possible to send their greenkeeper.

Headquarters for visitors to the Green Section meeting will be at Hotel Hamilton, 14th and K streets, N. W. The morning will be spent at the Arlington Turf Gardens. It is planned that the visitors will leave the hotel at 9 o'clock and return at 12 o'clock for luncheon. Through the courtesy of the Green Section several local golf clubs will be open to visitors in the afternoon. The visitors will then return to the hotel where dinner will be served at 7 o'clock, after which there will be an informal discussion on golf course maintenance. Greenkeepers and Green Committee men will be the guests of the Green Section during the day.

for information about—  
**Creeping Bent**

write or call

The Robert F. Leesley  
Grass Co.  
RIVERSIDE, ILL.

Telephone: Riverside 348