





## Featuring METH-EX<sup>®</sup> Slow Release Nitrogen

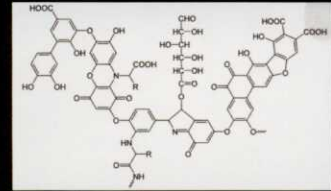
Meth-Ex is a multi-chain length, methylene urea nitrogen source that delivers consistent, extended release nutrition when the turf needs it most. This high-activity nitrogen delivers excellent color response and maximum long-term feeding.

## Stress-Buffering Biostimulants

Country Club MD contains both Sea Plant Kelp Meal and Humic Acid which helps the turf grass plant achieve optimum performance by helping it prepare for the onset of stressful conditions. Turf treated with Sea Plant Kelp Meal and Humic Acid will outperform untreated turf in overall quality and playability during stressful conditions.



*Harvesting Ascophyllum  
Nodosum in the Bay of Fundy*



*Humic Acid*

## See "MD" at Work

When Country Club MD comes into contact with water, the sea plant kelp meal and humic acid quickly release from the particles during dispersion, becoming immediately available to the plant.



## The "MD" Advantages

### Stress Protection

The stress-buffering biostimulants incorporated in Country Club MD fertilizer will assist your greens in preparing for the inevitable periods of stress that come in every growing season. These fertilizer and soil enhancers help maintain the high-quality and playability of your putting greens by aiding the turf plant to achieve optimal performance levels before biotic or abiotic stress conditions occur.

### No Mower Pickup

Country Club MD rapidly disperses into the putting green's canopy after irrigation to virtually eliminate the possibility of being picked up by the greens mower during the next mowing. This delivery system ensures that the exact amount of nutrients you intended to feed your greens with actually become available to the turf.

### No Particle Migration

Due to its maximized dispersion technology, Country Club MD moves into the turf canopy so efficiently that it practically eliminates the threat of particle migration in situations of over-watering or heavy rain events. Ensuring the nutrients reach and stay where they are intended is another MD advantage.

## → Productivity

### Insatiable App-etite?

Looking for more apps? Last month Turf Republic was excited to announce the iTurf Apps Market. We provide an "App Store" experience geared towards the turfgrass industry mixed in with some apps we think are a must. Our App descriptions will explain how these apps will benefit you as a turf manager and how they can be incorporated into your operation or business. The iTurf Apps Market is interactive! Do you use an app we have on our market? Tell us how you use it, give it a rating. Do you have an app you can't live without or are you a business that has an app? Let us know about it, we would be glad to add it to the iTurf Apps Market.



### Reminders

**Where to find it**  
Native to iOS devices.

#### Description

Reminders is a native app for iOS devices that is a simple, yet powerful, way to remember those important to-do's.

#### Assessment

This is an app I believe overlooked by many. Reminders is a very simple app, but sometimes those are the ones that work the best. Quickly add To-Do's into your iPhone or iPad with the very simple interface. Too many To-Do apps on the app store overly complicate this process. Set a time to remind you or use the geofencing ability of the iOS device to remind you when you either arrive at a location or leave a location. I used this app often to remind me when I would arrive at my shop to do something as I was often distracted with other issues before arriving to my next destination.

#### Pros

- Integrates across all iOS and Desktop devices.
- Allows for reminders at a location and not just a time.
- Sharing feature allows you to share your reminder lists with other staff.
- It's free

#### Cons

- Only works in the Apple ecosystem.
- Need Cellular enabled device to use geofencing capabilities.

### Apple iWork Suite

(Pages, Numbers and Keynote)

**Where to find it**  
App Store



#### Description

Pages, Numbers and Keynote were specifically designed for iOS mobile device. These apps allow you to create rich documents, spreadsheets and presentations utilizing the multi touch feature of the devices. The iWork suite of apps uses Apple's iCloud to store your files on the cloud for viewing and editing on any device and soon your desktop.

#### Assessment

Apple suite of Office programs are my work horses. Keynote is the perfect presentation tool for turf managers. This app allows you to create stunning presentations directly from your iPhone or iPad quickly and easily. Using multi touch, users can quickly drop in photos, videos and even music to a presentation. Adding transitions and animations is done with ease. Take your presentation from the course to the board room and connect your iPad directly to a TV or projector and WOW your members, boards, committees or customers. Pages is a great alternative to Word and like Keynote, uses the multi touch feature of

the iPhone and iPad to allow you to create documents with ease. Pages will quickly convert Word files, allowing you to view and/or edit without losing the original formatting. Numbers is another great alternative to Excel on a mobile device. Numbers does lack the ability to handle complicated workbooks and spreadsheets.

#### Pros

- Full-scale office suite takes advantage of Apples touch screen and multi touch gestures. Allows users to create professional looking documents and presentations quickly and easily.
- Integrates with device's media to allow user to quickly add photos, videos and/or music to any document or presentation.
- Apple's iCloud integration allows for editing or viewing a document on any iOS device.

#### Cons

- Only works within the Apple ecosystem
- Price
- Numbers cannot handle complicated workbooks and spreadsheets.

## → Productivity

### RadarScope

#### Where to find it

App Store, Android Market

#### Description

Radarscope is not for the untrained weather person. Designed for meteorologists, Radarscope allows viewing of NEXRAD level 3 and super resolution radar data along with weather warnings issued by The National Weather Service. Offering a variety of viewing radar options, this is a very powerful forecasting tool for turf managers with enough meteorology knowledge to be dangerous. This app utilizes the GPS receiver in your mobile device to provide you radar data for your exact location, not simply a queried zip code.

#### Assessment

This should be the go to radar app for turf managers. With some basic understanding of meteorology, Radarscope is an extremely powerful radar tool for predicting precipitation and other severe weather. This was my go to app for predicting incoming weather. Radarscope does not



use smoothed GIF's or PNG images to reflect what the radar return is. When you

open Radarscope you are seeing raw radar data, the same data professional meteorologists use to predict weather. Radarscope's ability to use the GPS radio in your mobile device to provide you with impending weather at your EXACT location can mean the difference between finishing a spray and heading for the shed.

#### 👍 Pros

- Provides radar return of your current location using your device's location services.
- Full suite of radar products such as storm velocities, precip rates, severe weather alerts.
- Integrates with Spotter Network.

#### 🗨️ Cons

This is a real radar application that outputs raw data. If you are used to viewing radar on the TV or websites like The Weather Channel, this is not the app for you.

### Turfpath

#### Where to find it

App Store, Android Market



#### Description

Turfpath is a powerful turfgrass resource built by turf professionals to be used by anyone from the average weekend lawn warrior to professional turfgrass managers. Turfpath has an extensive library of pests consisting of images, videos and descriptions. The focus of Turfpath are the users, it is the community aspect that makes this app so powerful. See what your peers are dealing with, receive disease updates from the field or submit photos of your turf concerns. Turfpath has brought social media to turf pest problem solving.

#### Assessment

Other industries have turned to crowd sourcing for gathering intel and in an industry so tightly knit, it only made sense to incorporate the community aspect into turf pest problem solving. This app has brought a worldwide network of turf managers and their knowledge to the palm of your hand. I regularly check in on the Turfpath

community and it is easy to see why so many have turned to using this app to help them in their daily grind. Turfpath should be on every turf manager's tool belt.

#### 👍 Pros

- Free
- Extensive library of turf pests that include descriptions, photos and videos.
- Discuss pest issues directly from within the app.
- Post your pest questions to pathologists in the app.
- Integrates with Twitter and Facebook.
- See updates on map of what users are seeing.

#### 🗨️ Cons

I would like the ability to view social media updates on this app from outside this application. Currently, when an update is posted on Twitter or Facebook from within the app, when a user clicks on that update, it prompts them to the app's download page and not the update. I do know the developer is working on this feature.

## → Field Applications



### Ignition and Logmein

#### Where to find it

App Store, Android Market

#### Description

Remote into your work desktop from a golf cart, clubhouse, home or even vacation. Ignition allows you to use your device's WiFi or cellular signal to remote into a desktop, Mac or PC running the Logmein software (which is also free). If you want the ability to transfer files, photos or stream audio, update to Ignition. Ignition is a free app that requires a \$39.99 annual subscription

#### Assessment

Whether you're with Toro, Rain Bird or any other of the companies that offer control systems for your golf course, each of them offer some type of remote access to your control system. Many of these options come at additional costs that maybe is not in the cards for your facility.

Logmein offers a free alternative to industry, by providing you remote access to your work desktop and/or irrigation computer from a mobile device. Initial remote access applications were clunky and weren't worth the time. These applications, specifically Logmein has greatly improved, harnessing the intuitive multi touch gestures these mobile devices offer.

#### 👍 Pros

- Remotely access your desktop (free)
- Transfer files and photos between desktop and iOS device

#### 🗨️ Cons

The need for \$39.99 per year subscription for Ignition



**Overseeders**

**Precision Seeding Technology**



**Ground Quake Sand Injector**

**RotaDairon™ Soil Renovator**



**Turf Surgeon Verticuts and Collects**

**Trenchers**



**Vacuums**



**Topdressers and Spreaders**



**Verticutters**

**Welcome to our Newest Dealers!**

- » A-OK Turf Equipment, Coventry RI
- » Bonneville County Implement, Idaho Falls ID
- » Commercial Turf and Tractor, Chillicothe MO
- » Show Turf, Boynton Beach FL
- » Turf and Industrial, Santa Clara CA
- » G.C. Duke, Ontario Canada
- » Storr Tractor, New Jersey & Long Island



**864.225.3666**  
**www.stecequipment.com**

## → Field Applications

### SunSeeker

#### Where to find it

App Store, Android Market



#### Description

Sunseeker was an app originally designed for companies who install solar panels. It was used to determine the best location for maximum sun exposure. This app is used within the turf industry to identify shade issues on the course. Bring the Sunseeker app to a meeting to show aerial shade coverage; any given day, any given time. Take this app outdoors and use the 3D feature and your device's camera. The 3D Augmentation feature allows you to get a LIVE look at the sun's path.

#### Assessment

This app has become a very powerful tool for turf managers to handle one of the most political issues on their property, tree management. This app will

provide the superintendent with an objective, factual representation on how trees are causing shade issues on their golf course.

#### Pros

- Price - \$6.99
- Ability to see sun's path on any day and time, not just current day.
- 3D "Live" view to see the actually sun's path of the trees you are looking at.

#### Cons

No export feature. You have to take a screen shot of your mobile device to save anything.

### MeasureMap

#### Where to find it

App Store



#### Description

MeasureMap allows you to quickly and more importantly accurately measure distances and areas. Done measuring, save these measurements to your cloud storage service, Evernote or email them. Are you working with Google Maps? Your MeasureMap files can be exported as .kml files and imported into your Google Map.

#### Assessment

This app is really a must have for any turf manger. MeasureMap provides you with a powerful tool to measure both lengths and areas directly from your mobile device with extreme accuracy. The import and export feature is what sets this app apart from others. Not all of us have it in the cards to have our properties mapped. Using MeasureMap and some sweat equity, you can easily map your entire property from your mobile device and export to Google Maps or just continue to view within this app. Bidding out cartpath work or presenting a project to a committee? You can take your measurements in this app, save them to your cloud storage or email them to those who are collaborating on the project.

#### Pros

- Very precise measuring of distances and areas.
- Wide range of units.
- Export and/or share to Email, Excel, Google Earth or Photo Album.
- Import other .kml files into program.
- View multiple measurements at one time.
- See elevations between measurements.
- Integration with iCloud to allow use across multiple iOS devices.

#### Cons

- Functions are hard to find within app. Takes time getting used to.
- No instructions or assistance guide with the app. GCI

Bill Brown, CGCS, is CEO of Turf Republic, the founder of iTurf Apps and author's GCI's new tech column.

### Instagram

#### Where to find it

App Store, Android Market



#### Description

Sharing images with Instagram is as easy as one click. With instant sharing to social media platforms like Facebook and Twitter, Instagram can be a powerful communication device for a turf manager. In the most recent update, Instagram now allows users to create up to 15 second videos and immediately share across your social media platforms. Instagram packs many great filters for both stills and video, but it is the sharing feature that makes this app a must have for turfgrass professionals.

#### Assessment

Turf managers have expanded their communication to Facebook, Twitter, websites and blogs to communicate with members, stakeholders and customers. The Instagram platform allows turf managers to take a picture with one button and have their photos instantly shared and or posted to their social media platforms, websites or blogs. I used Instagram during a recent renovation to document the project with photos. Having Instagram loaded into my blog, project photo albums were updated the instant I took the photo, saving valuable time for what is really important.

#### Pros

- Streamline your media publishing. With a little setup on your blog, website, and/or Facebook page, users can simply take a picture and have their photos publish instantly to their sites or social media platforms.
- Now allows users to take up to 15 seconds of video.
- Add filters to photos and videos.

#### Cons

Read privacy statement carefully. Instagram has the right to use your photographs.

# Is your water living up to its potential?

Water typically makes up 90% of sprayable solutions, and poor water quality can reduce product performance by up to 20%. Maximize your effectiveness using LI700® with Leci-Tech®.



## LI 700 with Leci-Tech

The World's #1 Selling Adjuvant

- Increases pesticide penetration
- Improves spray droplet deposition
- Reduces drift without increasing droplet size
- Corrects pH level for consistent performance
- For use with weak-acid herbicides, insecticides, PGR's, and liquid foliar nutritionals



Leci-Tech is a chemistry derived from the natural emulsifier soy lecithin and it's specially formulated to optimize spray application performance in these key areas:



### Drift Reduction

Leci-Tech products reduce spray drift without increasing the number of large droplets.



### Droplet Retention

Leci-Tech products ensure that more droplets hit the target and stay there, providing more consistent control.



### Penetration

Leci-Tech products provide quicker uptake with no impact on plant safety, maximizing pesticide and nutritional performance.

For more information on LI700 and Leci-Tech contact your local rep or visit us at [www.aatdirectsolutions.com](http://www.aatdirectsolutions.com)



**Tim Moraghan**, principal, ASPIRE Golf (tmoraghan@aspire-golf.com). Follow Tim's blog, Golf Course Confidential at <http://www.aspire-golf.com/buzz.html> or on Twitter @TimMoraghan

## HAVE YOU HUGGED YOUR GOLF PRO TODAY?

It's August, which means the golf world's attention is on the final major, the PGA Championship, and the organization that runs it, the PGA of America. So turn your attention to your local PGA representative – your co-worker, the golf professional.

I know, you're probably jealous of the pro at your club, who gets to sit in the air-conditioned pro shop all day, stacking shirts and joking with members, while you're running around in heat and humidity slinging hoses, whacking weeds, and trying to keep your crew working.

But take a step back. Think about it. Aren't we all in this together? Don't the superintendent and the golf professional have the same goals? Don't we both want to create an environment where golfers want to come and want to return for more? Don't we want to grow the game, since that will ultimately help us keep our jobs?

The days of the super and the pro crossing swords should be over. Where once there was wariness, there should be respect. Competition should be replaced by cooperation.

Which is why our two organizations – the GCSAA and the PGA of America – should work more closely together. We both want the same things, and working together will make us stronger and more effective in achieving them.

Our organizations and their members have the biggest impact on how real golf is played at clubs around the country and around the world. Working in tandem, we can make the game better for golfers and ourselves.

We need to start by understanding each other's jobs. Don't assume the pro has it all that easy. We have more in common than you might think. For starters, we both deal with two forces we can't control – weather and people.

Weather can be the downfall of a superintendent, but it can also have it in for the golf professional, as well. Bad weather can cancel or ruin events that have been in the works for months or years and have significant financial impact on the club. A lousy day also leads to cancelled lessons, rounds, and merchandise sales, taking money out of the pro's pocket.

But where we can really feel each other's pain is as scapegoats. While we get blamed for everything from grass that won't grow to tough pin positions, the pro is criticized for the golf course, tournament formats, the merchandise selection, a bad lesson, lost balls, dying carts, rude valets, lazy caddies, even the wrong beer at the halfway house. He, or she, is the point person for everything "golf" and has to listen to, and respond to, every criticism or complaint with a smile.

But that's just what people see. Behind the scenes, especially at private clubs, we both have to deal with boards of directors: volunteers who get to oversee and manage our budgets and influence what we do, whether or not they understand just exactly what that is.

Be glad we don't have to talk to members or casual golfers about long putters or other Rules issues. I'd rather explain why we are taking down a tree along the sixth fairway than the correct stroke-and-distance procedure.

Look at the golf pro and you'll probably see someone with the same worries and headaches as you. Job security, uncontrollable consequences, poor employees, you name it. We're in the same boat.

So what should we – collectively – do about it? First, communicate. Start talking to your golf pro, and not just about where the water collects on the 11th fairway. Make him or her your friend, a confidante. Share informa-

tion you learn about the club, what's going on, who's really in charge, where the bodies are buried. Be there to help him and he'll help you.

Here's another suggestion: We should piggyback our annual industry meetings so we actually meet, talk, and learn together in a non-threatening environment. Joint educational seminars and roundtables, too.

Together we should be the ones creating plans to promote and grow the game that don't rely on the tour pros. In fact, if the pro and the superintendent are on the same page, maybe we can begin educating the average golfer as to why what he sees on television is not what he wants or needs at his club or in his game.

In teaching the golfer to play better, running events, selling merchandise, and representing the club, the pro is instrumental to the game's growth at the grass level.

Meanwhile, tending to that grass level is the superintendent, who can (and probably should) get more involved setting up and maintaining courses so they are more welcoming and enjoyable for the most golfers. That means widening fairways, picking hole locations, managing green speeds, and maintaining course conditioning that promote a good time. Talk to your pro about this and it's likely he'll feel the same way: He wants golfers happy and coming back, too.

Of all the major organizations in golf, only two – the GCSAA and the PGA of America – are really responsible for growing the game. What we do day in, day out attracts and keeps real golfers playing and having fun. This shared concern for the golfing public – and by extension, our livelihoods – forms the basis for what could be the strongest pairing in the game.

The pro and the superintendent. Now that's a winning team. **GCI**





Groundsmaster® 3500-D



Groundsmaster® 4300-D



Groundsmaster® 4500-D



Groundsmaster® 4700-D

# ASSUME **TOTAL CONTROL** OVER EVERY INCH OF YOUR TURF.

You'll find Toro® Groundsmasters on more of the world's top courses, delivering consistent, clean cuts and breathtaking roughs. But don't take our word for it, see what superintendents are saying. Visit [toro.com/leaderboard](http://toro.com/leaderboard).

**The Leader in Golf.**



**Groundsmaster® Contour Rotaries**  
[toro.com/leaderboard](http://toro.com/leaderboard)

©2013 The Toro Company. All rights reserved.



**Count on it.**

# ROUGHING IT

Keeping rough looking healthy and uniform can be challenging, especially with limited resources. By Jason Stahl

**T**hey don't call it "rough" for nothing. It's rough on golfers whose errant shots nestle deeply into it, and it's rough on golf crews trying to maintain it with limited resources to the liking of linksters.

Adding to the aggravation is last year's extremely hot and dry conditions and recent economic constraints that have forced many superintendents to redirect resources away from rough maintenance.

James E. Skorulski, USGA senior agronomist for the Northeast Region, wrote last summer how courses were pretty banged up from drought, saltwater flooding and gray leaf spot, which impacted mostly perennial ryegrass. Traffic and not-so-perfect irrigation coverage also contributed to

