

FREE PRODUCT INFORMATION

FAST

GO TO
golfcoursenews.com

CHECK OFF
the reader service numbers that
you're interested in. It's fast and
convenient or mail in this card.

Signature _____
Date _____
Name _____
Title _____
Company _____
Address _____
City _____ State _____ Zip _____
Phone _____
Fax _____ E-mail Address _____

GIE Media will only use your e-mail address to contact you with relevant industry or subscription information.

1	2	3	4	5	6	7	8	9	10	11	12	13	14	15	16	17	18	19	20
21	22	23	24	25	26	27	28	29	30	31	32	33	34	35	36	37	38	39	40
41	42	43	44	45	46	47	48	49	50	51	52	53	54	55	56	57	58	59	60
61	62	63	64	65	66	67	68	69	70	71	72	73	74	75	76	77	78	79	80
81	82	83	84	85	86	87	88	89	90	91	92	93	94	95	96	97	98	99	100
101	102	103	104	105	106	107	108	109	110	111	112	113	114	115	116	117	118	119	120
121	122	123	124	125	126	127	128	129	130	131	132	133	134	135	136	137	138	139	140
141	142	143	144	145	146	147	148	149	150	151	152	153	154	155	156	157	158	159	160
161	162	163	164	165	166	167	168	169	170	171	172	173	174	175	176	177	178	179	180
181	182	183	184	185	186	187	188	189	190	191	192	193	194	195	196	197	198	199	200
201	202	203	204	205	206	207	208	209	210	211	212	213	214	215	216	217	218	219	220
221	222	223	224	225	226	227	228	229	230	231	232	233	234	235	236	237	238	239	240
241	242	243	244	245	246	247	248	249	250	251	252	253	254	255	256	257	258	259	260
261	262	263	264	265	266	267	268	269	270	271	272	273	274	275	276	277	278	279	280
281	282	283	284	285	286	287	288	289	290	291	292	293	294	295	296	297	298	299	300

JUNE 2004

GOLF COURSE NEWS

Do you wish to receive/continue to receive a
FREE subscription to *Golf Course News*?
_____ Yes ___ No

Signature _____
Date _____
Name _____
Title _____
Company _____
Address _____
City _____
State _____ Zip _____
Phone _____
Fax _____
E-mail _____

GIE Media Inc will only use your email address to contact you with relevant industry or subscription information.

If you do not want to receive email from trusted 3rd parties, please check here _____

1. What is your primary business at this location? (check one)

- 21-Public Golf Course
- 22-Private Golf Course
- 23-Semi Private Golf Course
- 24-Municipal/City/State Golf Course
- 25-Hotel/Resort
- 26-Par3/Executive Golf Course
- 27-Practice Facility
- 29-Other Golf Course
- 30-Golf Course Management Company
- 31-Golf Course Architect
- 32-Golf Course Developer
- 33-Golf Course Builder
- 39-Supplier/Sales
- 99- Others (please describe) _____

2. What best describes your title?

- A-Golf Course Superintendent
- B-Green Chairman
- C-Director of Golf/Head Pro
- D-Club President
- E-General Manager
- F-Golf Course Owner
- G-Builder/Developer
- H-Architect/Engineer
- I-Research Professional
- K-Assistant Superintendent
- L-Golf Course Management Company Executive
- Z-Others (please describe) _____

3. Number of Holes: (check one)

- A-9 Holes
- B-18 Holes
- C-27 Holes
- D-36 Holes
- E-Other

4. Purchase Involvement: (check all that apply)

- 1-Recommend equipment for purchase
- 2-Specify equipment for purchase
- 3-Approve equipment for purchase

5. Total Annual Maintenance Budget: (check one)

- 1-Less than \$50,000
- 2-\$50,000-\$99,999
- 3-\$100,000-\$249,999
- 4-\$250,000-\$499,999
- 5-\$500,000-\$749,999
- 6-\$750,000-\$1,000,000
- 7-\$1,000,000+

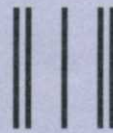
What is the best way to contact you for future renewals?

_____email _____fax _____telephone

To request your Free subscription to *Golf Course News* please fill out this form completely and fax back to:
216-961-0364 or 216-961-0594

or mail to:
Golf Course News
PO Box 5817
Cleveland, OH 44101-0817.

Please allow 4-6 weeks for delivery of first issue. Incomplete forms will not be processed. Publisher reserves the right to reject all non-qualified subscription requests.

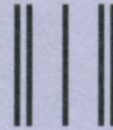
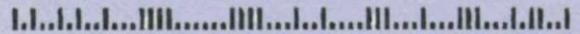


PLACE
POSTAGE
HERE

GOLF

COURSE NEWS

PO BOX 5817
CLEVELAND, OH 44101-0817

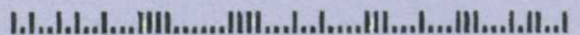


PLACE
POSTAGE
HERE

GOLF

COURSE NEWS

PO BOX 5817
CLEVELAND, OH 44101-0817

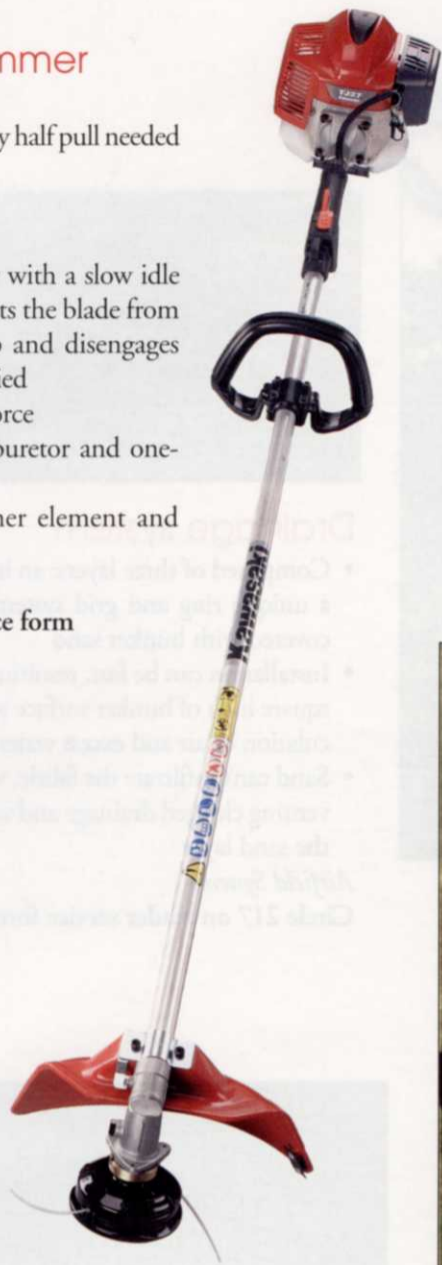


KTR27A string trimmer

- 26.3 cc engine
- Easy starting feature — only half pull needed to start
- Lightweight
- Low noise levels
- Engine uses a carburetor with a slow idle starter device that prevents the blade from running during start-up and disengages when the throttle is applied
- Reduced recoil pulling force
- Completely covered carburetor and one-piece fan housing
- Easy-to-service air cleaner element and muffler screen

Kawasaki Motors Corp.

Circle 211 on reader service form



Gas-powered, zero-turn mower

- ZG23 model features a 54-inch mower deck
- Economical gas unit
- Kohler Command Pro, 23-hp, two-cylinder, air-cooled engine
- External air intake system
- One-piece, integral hydrostatic transmission operates on a shaft drive with no belts
- Wet multi-plate disc brakes produce a reliable brake force
- Deep 10-gauge steel deck allows more airflow circulation through the blades enabling a quality cut at a fast rate
- Attach/detach deck has quarter-inch cutting height adjustment dial allowing increments on 1-inch to 5-inch heights

Kubota Tractor Corp.

Circle 212 on reader service form



Slice n' Seed walk-behind overseeder

- Repairs or re-establishes grass in worn areas, or establishes new grass varieties
- 8-hp Honda engine with centrifugal clutch
- Capable of covering 22,000 square feet per hour
- 9-inch, heat-treated slicing blades on 2-inch centers
- Stainless-steel bottom with internal rotor driven by front wheel drive
- Cam gauge sets opening size to meter all types of grass seed; hand lever is used to shut off seed flow
- Internal rotor bar and metering bottom are removed easily for servicing
- 0.83-cubic-foot seed box can be ordered with traditional 10-inch disks to hold open the slit to allow a higher percentage of seed into the ground

Gandy Co.

Circle 213 on reader service form

ATM-72LC all-terrain mower

- Versatile with sleek hood and cowling design that allows easier access for maintenance and service
- 30-hp diesel engine powers hydraulic deck drives, steering, propulsion, auto-leveling and deck lift
- Split 72-inch deck design follows contours efficiently and allows cutting V-ditches and crowns

DewEze

Circle 214 on reader service form



Z Master Z597-D diesel mid-mount ZRT mower

- Top-mounted radiator draws cool, clean air, allowing efficient engine cooling and longer engine life
- 12-gallon fuel capacity in tanks with large fill-neck openings
- 26-inch drive tires with wide wheel stance optimize traction and stability
- Z Stand provides quick and easy access to the underside of the deck
- Deluxe suspension seat provides operator comfort through lumbar support and adjustable suspension, position, armrests and seat-back angle
- Heavy-duty, two-stage canister air cleaner improves engine life and reduces maintenance
- Dual anti-scalp wheel brackets are less susceptible to bending
- 5 1/2-inch-deep deck provides the capacity to handle the challenging conditions

The Toro Co.

Circle 215 on reader service form



Underground rake caddie

- Reduces cost of moving bunker rakes by maintenance crews so traps can be raked and the grass mowed
- Doesn't interfere with play and is aesthetically pleasing
- Maintained underground out of the way of maintenance crews
- Keeps the rake clean and dry
- Push lid to open, and rake pops out of the ground about 24 inches
- After use, golfer puts rake back into caddie and pushes it down with a golf club until the rake locks in place; then golfer kicks the lid shut and the rake is out of the way
- Rake handle won't erode in the sun
- Spaced no more than every 16 yards around the bunker

Underground Rake Caddie

Circle 216 on reader service form



Drainage system

- Composed of three layers: an impervious liner membrane, a unique ring and grid system, and a geotextile that are covered with bunker sand
- Installation can be fast, resulting in drainage beneath every square inch of bunker surface with a void space for the circulation of air and excess water
- Sand can't infiltrate the fabric, while water flows freely, preventing clogged drainage and water collection in and above the sand layer

Airfield Systems

Circle 217 on reader service form

Bunker pumper

- Pumping rate capability of 240 gpm
- 6-hp Briggs & Stratton engine
- Triple protection grease-filled seal prevents water and debris from coming into contact with engine components
- Floating pump weighs less than 90 pounds and is used for draining pools, sand traps, construction ditches and low-lying field areas
- Self-priming and can be operated at full throttle for about 45 minutes on one tank of fuel and can run dry with no harm to the engine
- Centrifugal pump offers submerged suction without additional hoses or priming systems
- Can operate in less than 3 inches of water
- Removable float makes it easier to handle, maneuver and store
- One-year limited warranty on the entire unit



Otterbine Barebo

Circle 218 on reader service form



Sandstorm screen

- Lightweight mobile unit enables removal of undesirables from bunkers
- Remixing the different sieve sizes renews bunkers' ability to rid itself of excess moisture by allowing the water, formerly trapped by compaction, to get to the drainage system
- Powered by a 12-volt DC vibratory motor
- Provides the ability to revive bunkers' current status and maintain them

Z Screen

Circle 220 on reader service form



Sandmat geosynthetic bunker liner

- Combines manufacturing, geotechnical and geosynthetics expertise for improved bunker management techniques
- Engineered blend of high tenacity polyester fibers bonded to form a thick blanket-like matrix designed to enhance bunker drainage, minimize sand washouts, prevent infiltration of contaminating fine or coarse subgrade particles and improve course aesthetics and playability
- Available directly from the manufacturer and locally through a national network of regional representative organizations

Western Nonwovens

Circle 219 on reader service form

AFTER 40 YEARS OF EXPERIENCE, OUR TOP DRESSER TECHNOLOGY IS UNMATCHED.



THE WIDESPIN™ 1530 IS A GOOD EXAMPLE:

- **Guaranteed 3-year warranty.** Unmatched in the industry!
- **Patented 3-position switch.** Guarantees even application every time.
- **Patented WideSpin technology.** Top dressing that ranges from 15' heavy to 30' light—no different attachments required.
- **Adjustable angle of spinners from 0-15°.** Allows for broadcast applications or to drive the sand into the turf.
- **Galvanized hopper.** No rust or flaking paint means no-stick action.
- **A manufacturer with 40 years of turf experience.** Our knowledge brings you cutting-edge equipment.



30 Feet Light



15 Feet Heavy



When it comes to top dressing, we have been—and still are—the industry leader. If you want unparalleled performance in any top dressing application, choose the WideSpin 1530. For a demo or to

request product information, call 1-800-679-8201 or visit turfco.com.

USE READER SERVICE #33



THE LEADER. SINCE 1961.

1655 101st Avenue NE • Minneapolis, MN 55449-4420 U.S.A.
(763) 785-1000 • Fax (763) 785-0556 • www.turfco.com

Greensron 5000 turf roller

- Tightens thatch layer to increase durability of the green, reduces spike marks on sand-based greens and reduces heal marks during wet weather
- Used to squeegee greens after heavy rain during tournaments to get players back on the course quickly
- Removes standing water in low areas due to rain or broken sprinkler heads
- Smooths green surface after aerifying or top dressing; ironing will maintain smoothness, trueness and putting speed
- Puts dew into greens for water conservation
- Irons rough areas on tees, range and fairways
- Allows for increased mowing heights during stressful parts of summer
- Decreases and eliminates the need for double cutting

Wood Bay Enterprises

Circle 221 on reader service form



TerraRoller dual-purpose roller/spiker

- Uses three gang rollers alone to speed up greens
- Integrated spiker can be lowered to help greens breathe and speed water absorption with almost no surface disruption
- Hydraulic lift provides easy operation and ample ground clearance during transport

Broyhill

Circle 222 on reader service form

SR72 roll 'n' spike golf and sports field roller

- Features the patented triple offset smoothing roller configuration
- Trues the surface by design, not weight
- Ideal for all golf courses
- Reduces ankle and knee injuries
- Three-point linkage, set-up, cat 2 or 3 fittings
- Minimum 50-hp tractor required
- Spiker has three depth settings: 1 inch, 1½ inches and 2¼ inches
- Spikers set apart 1½ inches
- 72-inch roll width
- Weighs 1,650 pounds - extra weight can be added
- Can roll and spike at high speed

True-Turf Equipment

Circle 223 on reader service form



KTR 30 turf roller

- Walk behind with traction drum and rounded edges
- Gentle on turf
- Maneuvers around tight spaces
- Handle folds for easy storage
- Water-filled 30-inch-wide roller
- Heavy-duty design
- Fingertip controls for speed, forward, reverse and on/off
- Hydrostatic drive
- 5.5 hp Honda engine

Kesmac

Circle 224 on reader service form



Groundhog roller frame design

- Available in 45-inch, 60-inch, 75-inch, and 90-inch widths
- Pull-type or three-point hitch tractor mounted; 12-foot and 15-foot pull-type
- Any frame can be fitted with any of the AerWay family of tines
- New designs can be fitted with an adjustable height smoothing roller
- Roller can be varied through over 10-inch of lift in ½-inch increments, which allows user to fine tune maintenance program from roller use exclusively, to venting aeration at various tine penetration depths, to tine openings without rolling
- Possible to roll and/or aerate 18 fairways in one day

AerWay

Circle 225 on reader service form



SitePro 2.0 central control system

- Ability to manage irrigation demand automatically to meet available pump station capacity
- Can determine changes of pump-station volume and recalculate irrigation based on a predetermined set of rules established by the user
- Ability to model different irrigation solutions to anticipate outcome
- Reporting features provide details on any problems that occurred, as well as confirmation of what areas were irrigated
- Saves hours of work required to recharge an irrigation system after downtime
- Allows the integration of multiple pump stations and offers the ability to disable integration and/or responses

The Toro Co.

Circle 226 on reader service form



200RSDB200 professional 2-inch valve

- Manually operated
- Solid brass construction
- 300 Series stainless steel components
- Pressure activated seals on each bell
- Newly designed one-piece top bonnet with new O-ring seal that eliminates leakage
- Accepts current commercial pipe restraints
- Solid brass cross handle (can be ordered with wheel handle); both handles can be used with model 30-30, 30-6 sprinkler keys
- Weighs 10 pounds, 11.9-inches high, 7.1-inches wide
- Eliminates need for thrust blocks

Champion Irrigation Products

Circle 227 on reader service form

PAR+ES decoder controller

- Ability to program and control decoders from a satellite interface
- Combines features and benefits of a controller system with those of a decoder system, resulting in an easier and less costly installation
- Offers the opportunity for easier expansions as the course's irrigation system changes
- Can be used in stand alone mode or with a company's central control system through a two-wire or wireless interface
- As many as 72 decoder addresses and two valves per address can be added
- Can operate 16 valves or solenoids simultaneously
- Provides three troubleshooting tests to facilitate maintenance of the decoder installation, plus four two-wire decoder line outputs each with its own on/off switch.
- Addition of new decoders to wire paths results in lower labor and material costs

Rain Bird Corp.'s Golf Division

Circle 228 on reader service form

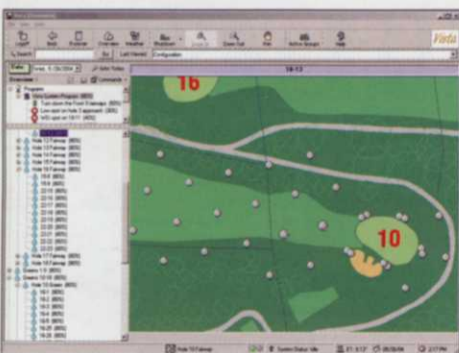


FloMax variable frequency drive pump station

- Designed for indoor installation
- Offers flow rates from 200 to 1,200 gpm at pressures from 50 to 150 psi
- Optional skid-mounted aluminum and steel enclosure makes

Flowtronex

Circle 229 on reader service form



Vista visual central control system

- Uses AutoCAD design coupled with GPS technology
- Automatically creates base irrigation program, saving time and money
- Optimizes pump efficiency and minimizes watering window automatically
- Monitors and senses problems in the field, then reacts in real-time, making programming and flow balancing adjustments on-the-fly
- Can see vital statistics with mouse clicks down to the individual rotor level
- Can save water while preventing plant disease and enhancing playability
- Flexibility to offset troublesome or unique areas for special treatment
- Automatic scheduling and balancing from start or end of water window
- Set-and-forget irrigation therapy handles temporary situations, then returns to normal

Hunter Industries

Circle 230 on reader service form



Brush chipper

- Model 65 features 6-inch-diameter capacity disc style
- 12-inch-wide chipper opening
- Hydraulic, right-angle feed
- Low profile, slanted infeed tray
- Infeed hopper is 25 inches off the ground
- Hinged feed wheel closes to within 5½ inches of chipper disc
- Reversible control bar at infeed with forward, reverse and stop
- 24-cubic-inch, 1,500 psi motor that pulls and crushes material

Bandit Industries

Circle 231 on reader service form



Bushmaster PTO-driven chipper

- Variable speed power feed 70 fpm or 45 fpm
- Drum-style chipping wheel
- Continuous chipping capacity as wide as 6 inches
- Power feed on/off control bar
- Heavy-duty shielded PTO shaft
- Built-in, high-volume blower with optional 15-inch extension
- Two knives modified A8 tool steel
- Easy access to belts and chipper knives

Befco

Circle 232 on reader service form



Towable chipper

- Can handle branches as wide as 6 inches in diameter
- Live hydraulic feed system with a variable speed feed roller with instant reverse
- "Try again" feed system automatically retries feeding limbs three times
- 15-inch-diameter feed roller
- 13-inch-wide opening contains 10 knife blades for enhanced ease of feeding
- 360-degree-rotating, 6.7-inch discharge chute

Crary Bear Cat

Circle 233 on reader service form

"Call a Mouse to your House," be the "Home Town Exterminator," become a Truly Nolen Franchisee and say; "Nite, Nite Termite!"[®] and "Adios Cucaracha!"[®]



Offer Tru-Guard[®], Truly Care[®], Monitored Defense System[®]; Join the friendliest system and say, "We get the bugs out."[™]

New and established protected franchise territories **800-458-3664**
Usa.franchise@trulymail.net

Employment 800-282-4062
National Accounts 877-568-3868

3636 E. Speedway • Tucson, AZ 85716

GOLF COURSE NEWS

**DRIVE YOUR SALES BY
ADDING REPRINTS TO YOUR
MARKETING CAMPAIGN.**

Article Reprint Service
Call Annemarie Dunchack at 800-456-0707

EMPLOYMENT WANTED

Project Manager seeks position with owners and developers of new and renovation golf course construction, club house and maintenance buildings. Well versed in all aspects in the golf course industry, from plans to opening of operations worldwide. 888/310-6524.

FOR SALE

TURBO TURF
HYDRO SEEDING SYSTEMS



Prices Start @ \$1295.00
For a FREE hydro seeding info pack & video call:
TURBO TECHNOLOGIES, INC.
1500 FIRST AVE., BEAVER FALLS, PA 15010
1-800-822-3437 www.turboturf.com

Fairway Feel PLUS
Natural Fiber Range Mats with a Surface that hits and feels like grass...



GCSAA #4720
Reliable Golf Course Supplies
1-800-274-6815
www.reliablegolf.com

Stroke & Distance
We Take The Guess Work Out Of Golf



GPS Work • Laser Measuring
Distance Tags • Sprinkler Head
Lids • Signs • Yardage Markers
Yardage Books

To Order Call: (800) 523-7853
Mike Donovan
www.strokeanddistance.com
Charlotte NC 28105

EAGLE GOLF & LANDSCAPE PRODUCTS
EAGLE INTERFACE FOR GREENS AND BUNKER CONSTRUCTION



ADS, NDS, Eureka, EnkaTrap, EnkaPath, EnkaShoreline, Nyloplast, JM SPUNBOND

GREEN INTERFACE

PLEASE CALL FOR A COMPLETE CATALOG
1-800-21-EAGLE
WWW.EAGLEGOLFANDLANDSCAPE.COM

Work Smarter



Reel & Trailer
Hose Caddy

800-444-3134
reelcraft.com **REELCRAFT**

Temprotect™
Technology ... Applied

- Increased Revenue
- Eliminate Chronic Frost Areas
- Maintain Consistent Tee-Times

FROST PREVENTION
TEMPROTECT™



For More Information
CALL
800-369-3878
www.envirotechservices.com
Distributor Inquires Accepted
ENVIROTECH SERVICES, INC.

GOLF COURSES FOR SALE

Tucked away in the Tehachapi Mountains at over 4,000 feet in elevation is the The Horse Thief Country Club and Golf Course. A full 18 holes with a par 72 and a SCGA slope rating of 131 to 127, covered with oak trees, lakes and natural beauty. Offered at \$3.9 million. Call Scott at 661-822-5400. Horse Thief Country Club & Golf Course also includes a restaurant, driving range and pro shop.

HELP WANTED

**Construction Supervisor,
Shaper, Assistant Supervisor,
Irrigation Foreman,
Finish Laborer**
needed for projects
in the northeast and others.

Fax resume to **914-693-9506**
or e-mail to **john@intergolfinc.com**.

United Golf, LLC

Is currently interviewing qualified construction Superintendents, Asst. Superintendents and Irrigation Superintendents for immediate hire. Please send resume to jeffe@unitedgolfllc.com or fax to 918/250-7049, attention Jeff. Resume should include desired salary range; list of projects as Superintendent; Architect's name and phone number that you've worked with as construction Superintendent.

Irrigation Superintendent/Supervisor, Foreman, Equipment Operators, Pipe Fitters and Laborers needed for projects in the southwest and throughout the United States. Fax resume to 909/822-7007 or call 909/822-7000. Resumes also can be e-mailed to sales@soltisgolf.com.

To place your classified ad,
call Jennifer Halas at 800-456-0707
or email jhalas@gje.net.

COMPANY	PAGE	RS
The Andersons www.andersongolfproducts.com	71	36
Bobcat www.bobcat.com	15	14
Cleary Chemical www.clearychemical.com	7	11
Exide Technologies www.exidetechnologies.com	21	21
Golf Greens Fore U www.golfgreensforeu.com	23	24
Jacobsen www.jacobsen.com	19	18
Lebanon www.lebanonturf.com	35	29

COMPANY	PAGE	RS
Miltona www.miltona.com	20	19
NGK www.ngksparkplugs.com	17	16
Nufarm www.riverdalecc.com	47	30
PBI Gordon www.pbigordon.com	9	12
Plant Heath Care www.planthealthcare.com	18	17
Project Evergreen www.projectevergreen.com	59	32

COMPANY	PAGE	RS
Rainbird www.rainbird.com	29	27
Regal www.regalchem.com	31	28
Redexim Charterhouse www.redexim.com	16	15
RISE www.pestfacts.org	53	31
Roots www.rootsinc.com	25	25
SGD Golf Co. www.sgdgolf.com	22	22

COMPANY	PAGE	RS
Smithco www.smithco.com	2-3	10
Syngenta Professional Products www.syngentaprofessionalproducts.com	72	37
TifSport Growers www.tifsport.com	14	13
Truly Nolen www.trulynolen.com	68	34
Turfco www.turfco.com	65	33
Vitamin Institute www.vitamininstitute.com	20	20
Wellmark www.wellmarkinternational.com	27	26

Making the game more affordable and accessible

The United States Golf Association (USGA) is promoting a good cause through golf. Through its grants initiative, the USGA empowers organizations that introduce golf to individuals—specifically economically disadvantaged youth and those with disabilities—who otherwise would not have the opportunity. Grant awards are directed to instructional programs and the construction of facilities that make the game more affordable and accessible.

During 2003, \$5.75 million was awarded to 222 organizations that demonstrate quality operations and fiscal planning. These programs plan to reach more than 200,000 people with disabilities with the assistance of USGA grants. Since 1997,

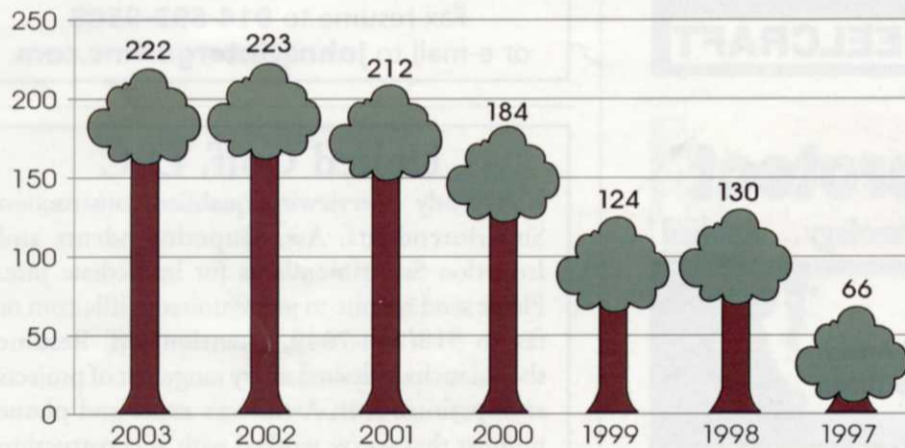
when the USGA committed \$50 million throughout 10 years to this grants initiative, more than \$38 million has been awarded throughout the nation aimed at teaching individuals about golf and the life lessons inherent in the game.

The USGA assists supported programs with public relations, obtaining equipment and fiscal planning. Grant recipients receive in-kind donations of USGA merchandise for fundraising and rules publications for use in educating their participants. In 2003, the USGA hosted the first Pikes Peak Summit—a gathering of 300 grant recipients that helped promote and exchange best practices for operating quality golf programs and facilities.

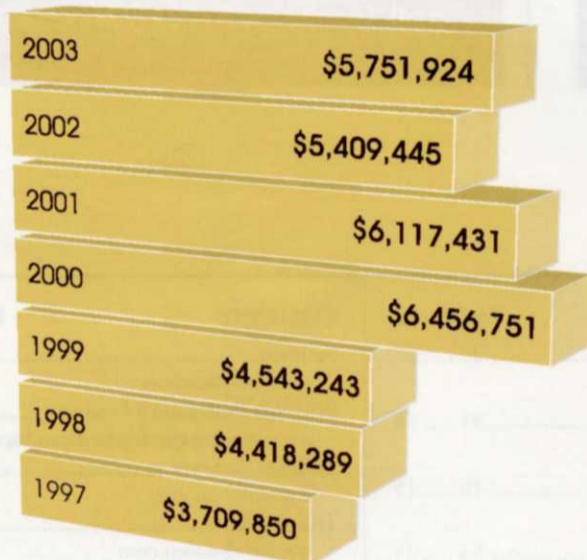
In 2003, the USGA conducted a survey of past grant recipients to assess the level of success they've achieved throughout the past seven years. Many of the more than 600 organizations that have received grants from the USGA responded. The results showed these programs improved in areas such as fundraising, participant reach, program length and providing increased amounts of golf course access at lower costs.

Below are charts that show the numbers of grants, the amount of annual awards and grant distribution.

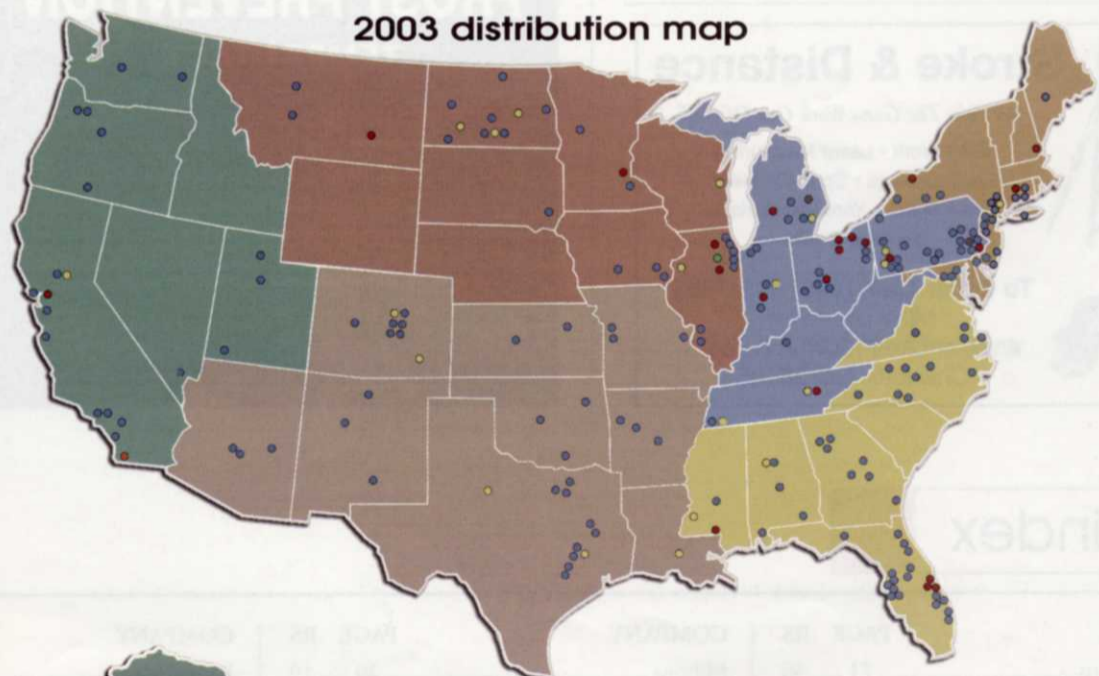
Number of grants by year 1997-2003



Dollar amount of annual awards 1997-2003



2003 distribution map



- West region**
• 23 grants totaling \$532,410
- Southwest region**
• 37 grants totaling \$799,578
- Great Plains region**
• 35 grants totaling \$11,407
- North Central region**
• 48 grants totaling \$1,263,550
- Northeast region**
• 27 grants totaling \$490,400
- Southeast region**
• 46 grants totaling \$1,158,100

KEY

- Junior golf programs
- Golf facilities
- Golf programs for individuals with disabilities
- School-operated programs
- Caddie/occupational programs
- Other

Source: All information provided by the United States Golf Association

