

WS PRO LT weather station

- Designed to help eliminate the guesswork when determining accurate sprinkler run times
- Sensors collect weather data—temperature, relative humidity, wind speed, solar radiation and rainfall amounts—throughout a 24-hour period
- Data is used to calculate an evapotranspiration value, which determines the precise amount of water that must be replaced to maintain soil moisture at a desired level
- Central control will automatically program the sprinkler run times without overwatering or leaving areas of turf too dry
- Offers a cost-efficient option for smaller-budget golf courses
- Ability to connect as many as five weather stations to a central control system
- Allows rainfall from one day to be carried over to the following day for accurate run-time calculations

Rain Bird Corp.

Circle 200 on reader service form



Futerra flexible revegetation blankets

- Promotes fast vegetation growth
- Weighs 50 percent less than comparable blankets and absorbs three times the amount of water
- Features a combination of thermally processed wood fibers and crimped, interlocking synthetic fibers that provides a high seed-germination rate
- Netting degrades in three months; no messy nets remain to entangle in mowers

Profile Products LLC

Circle 201 on reader service form

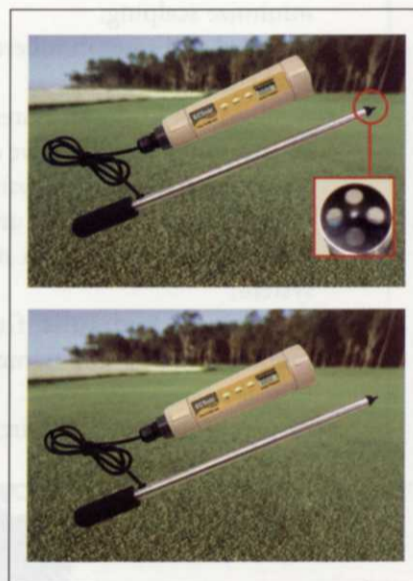


Electric pump driver

- Controls the rate of flow by regulating the speed of a 12-volt pump
- Replaces a electric servo valve
- Controls most 12-volt pumps as high as a maximum rating of 20 amps
- Installation is clean and simple
- Accurate and effective control of application rate
- Designed to work in conjunction with company's controllers
- Can be purchased as part of a customized kit with control console, speed sensor and flow meter, or just the EPD kit

Micro-Trak Systems

Circle 204 on reader service form



Field scout direct soil EC probe/meter

- Portable meter permits instant, accurate measurement of nutrient salts in soil media, as well as water or nutrient solutions
- Measures soil conductivity on the spot without tedious soil sampling and preparation methods
- Resolution of 0.01 mS/cm and an accuracy reading of +/- 2 percent

Spectrum Technologies

Circle 203 on reader service form



Mete-R-Matic self-propelled top dresser

- Controls thatch layers
- Decreases compaction by improving the growing medium and leveling uneven turf
- Controls are in easy, fingertip reach of the walk-behind operator
- Easy to maneuver in tight places
- Patented chevron belt provides a uniform application regardless of moisture content or material
- Light footprint prevents turf damage.
- 31½-inch spreading width
- 11.5-cubic-foot hopper and 2.5-mph operating speed
- Available with a special patent-pending overseeder attachment
- F-15 model available for factory-direct purchase

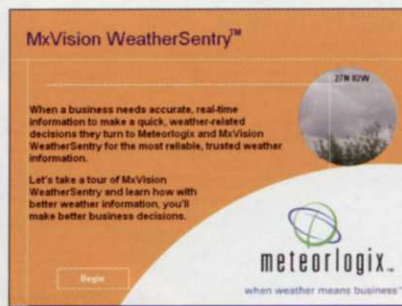
Turfco

Circle 205 on reader service form

Ionization system and electronic descaler

- Releases a controlled amount of electrically charged copper and silver ions into water for algae and disease control
- System includes microprocessor control box and a pair of scientifically formulated electrodes composed of copper and silver
- Control box works by generating a low-voltage DC current to the electrodes
- Descaler eliminates scale formation in water lines, misters, sprinkler system nozzles without chemicals or maintenance
- Integrated circuitry system produces a modulating frequency waveform to an induction coil that's wrapped around the outside of an incoming water line; this hits the resonant frequency of the calcium carbonate molecules causing them to lose their adhesive properties

ClearWater Enviro Technologies
Circle 206 on reader service form



MxVision WeatherSentry Turf Edition weather service

- Designed to help superintendents make operational decisions about crew scheduling, chemical applications and course maintenance
- Provides up-to-the-minute weather information, including the ability to accurately gauge rainfall, check wind speed and heat indexes
- Allows user to look 10 days into the future and know when to expect major pattern changes
- Customized visuals show when temperatures and high dew points might encourage disease or when winds exceed spraying thresholds

Meteorlogix
Circle 207 on reader service form

Premier and Medalist ball washers

- Sharp-looking design
- Easy-to-use agitator
- Durable cast aluminum case and top
- Premier model features spiral plunger for quick ball washing
- Premier model holds seven pints of washer fluid
- Drain plug flushes quickly and is tamper resistant and leak proof
- Medalist model mounts inside a 2 3/8-inch post

Standard Golf Co.
Circle 208 on reader service form



Verti-Drain deep-tine aerators

- 7215 model features 61-inch width and can aerate to 10-inch-deep maximum, making for greater productivity when fitted to a 23-hp tractor
- 7215 model offers reinforced front and rear rollers and a lighter frame than the 73 series, and has lower horsepower requirements
- 7416 model has a 63-inch width and weighs less than the 7516 model and can be used with smaller tractors
- Cranks of the 7416 model are supported on each end
- 7416 model can be fitted with solid and coring tines to a maximum depth of 14 inches.
- Both models are equipped with maintenance free, self-lubricated sealed bearings on all pivot points and a three-speed gearbox

Redexim Charterhouse
Circle 209 on reader service form



Hydration Pellet wetting agent

- 100-percent active blend of nonionic surfactants
- For spot treatment of dry areas on greens, tees, bunker banks and fairways
- Provides consistent playing conditions by allowing even distribution of water to root zone
- Each pellet should be suitable to treat a 15,000-square-foot to 20,000-square-foot area
- Effective for three to four weeks; can be applied as often as needed
- Are non-phytotoxic

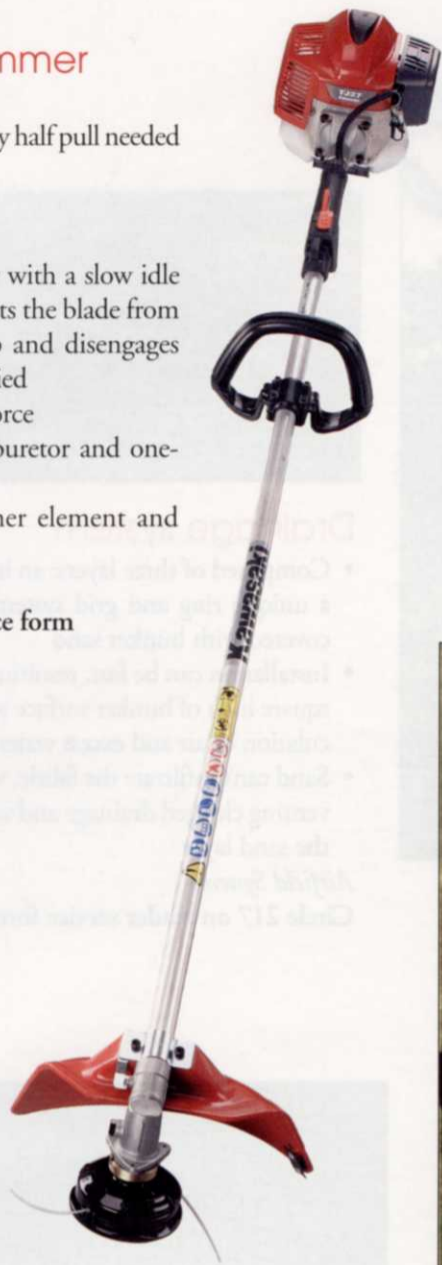
Jada Corp.
Circle 210 on reader service form

KTR27A string trimmer

- 26.3 cc engine
- Easy starting feature — only half pull needed to start
- Lightweight
- Low noise levels
- Engine uses a carburetor with a slow idle starter device that prevents the blade from running during start-up and disengages when the throttle is applied
- Reduced recoil pulling force
- Completely covered carburetor and one-piece fan housing
- Easy-to-service air cleaner element and muffler screen

Kawasaki Motors Corp.

Circle 211 on reader service form



Gas-powered, zero-turn mower

- ZG23 model features a 54-inch mower deck
- Economical gas unit
- Kohler Command Pro, 23-hp, two-cylinder, air-cooled engine
- External air intake system
- One-piece, integral hydrostatic transmission operates on a shaft drive with no belts
- Wet multi-plate disc brakes produce a reliable brake force
- Deep 10-gauge steel deck allows more airflow circulation through the blades enabling a quality cut at a fast rate
- Attach/detach deck has quarter-inch cutting height adjustment dial allowing increments on 1-inch to 5-inch heights

Kubota Tractor Corp.

Circle 212 on reader service form



Slice n' Seed walk-behind overseeder

- Repairs or re-establishes grass in worn areas, or establishes new grass varieties
- 8-hp Honda engine with centrifugal clutch
- Capable of covering 22,000 square feet per hour
- 9-inch, heat-treated slicing blades on 2-inch centers
- Stainless-steel bottom with internal rotor driven by front wheel drive
- Cam gauge sets opening size to meter all types of grass seed; hand lever is used to shut off seed flow
- Internal rotor bar and metering bottom are removed easily for servicing
- 0.83-cubic-foot seed box can be ordered with traditional 10-inch disks to hold open the slit to allow a higher percentage of seed into the ground

Gandy Co.

Circle 213 on reader service form

ATM-72LC all-terrain mower

- Versatile with sleek hood and cowling design that allows easier access for maintenance and service
- 30-hp diesel engine powers hydraulic deck drives, steering, propulsion, auto-leveling and deck lift
- Split 72-inch deck design follows contours efficiently and allows cutting V-ditches and crowns

DewEze

Circle 214 on reader service form



Z Master Z597-D diesel mid-mount ZRT mower

- Top-mounted radiator draws cool, clean air, allowing efficient engine cooling and longer engine life
- 12-gallon fuel capacity in tanks with large fill-neck openings
- 26-inch drive tires with wide wheel stance optimize traction and stability
- Z Stand provides quick and easy access to the underside of the deck
- Deluxe suspension seat provides operator comfort through lumbar support and adjustable suspension, position, armrests and seat-back angle
- Heavy-duty, two-stage canister air cleaner improves engine life and reduces maintenance
- Dual anti-scalp wheel brackets are less susceptible to bending
- 5 1/2-inch-deep deck provides the capacity to handle the challenging conditions

The Toro Co.

Circle 215 on reader service form



Underground rake caddie

- Reduces cost of moving bunker rakes by maintenance crews so traps can be raked and the grass mowed
- Doesn't interfere with play and is aesthetically pleasing
- Maintained underground out of the way of maintenance crews
- Keeps the rake clean and dry
- Push lid to open, and rake pops out of the ground about 24 inches
- After use, golfer puts rake back into caddie and pushes it down with a golf club until the rake locks in place; then golfer kicks the lid shut and the rake is out of the way
- Rake handle won't erode in the sun
- Spaced no more than every 16 yards around the bunker

Underground Rake Caddie

Circle 216 on reader service form



Drainage system

- Composed of three layers: an impervious liner membrane, a unique ring and grid system, and a geotextile that are covered with bunker sand
- Installation can be fast, resulting in drainage beneath every square inch of bunker surface with a void space for the circulation of air and excess water
- Sand can't infiltrate the fabric, while water flows freely, preventing clogged drainage and water collection in and above the sand layer

Airfield Systems

Circle 217 on reader service form

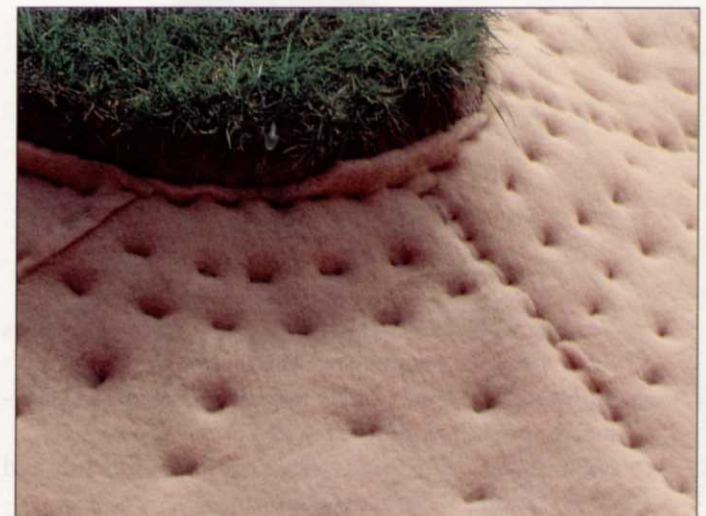
Bunker pumper

- Pumping rate capability of 240 gpm
- 6-hp Briggs & Stratton engine
- Triple protection grease-filled seal prevents water and debris from coming into contact with engine components
- Floating pump weighs less than 90 pounds and is used for draining pools, sand traps, construction ditches and low-lying field areas
- Self-priming and can be operated at full throttle for about 45 minutes on one tank of fuel and can run dry with no harm to the engine
- Centrifugal pump offers submerged suction without additional hoses or priming systems
- Can operate in less than 3 inches of water
- Removable float makes it easier to handle, maneuver and store
- One-year limited warranty on the entire unit



Otterbine Barebo

Circle 218 on reader service form



Sandstorm screen

- Lightweight mobile unit enables removal of undesirables from bunkers
- Remixing the different sieve sizes renews bunkers' ability to rid itself of excess moisture by allowing the water, formerly trapped by compaction, to get to the drainage system
- Powered by a 12-volt DC vibratory motor
- Provides the ability to revive bunkers' current status and maintain them

Z Screen

Circle 220 on reader service form



Sandmat geosynthetic bunker liner

- Combines manufacturing, geotechnical and geosynthetics expertise for improved bunker management techniques
- Engineered blend of high tenacity polyester fibers bonded to form a thick blanket-like matrix designed to enhance bunker drainage, minimize sand washouts, prevent infiltration of contaminating fine or coarse subgrade particles and improve course aesthetics and playability
- Available directly from the manufacturer and locally through a national network of regional representative organizations

Western Nonwovens

Circle 219 on reader service form

Greensron 5000 turf roller

- Tightens thatch layer to increase durability of the green, reduces spike marks on sand-based greens and reduces heal marks during wet weather
- Used to squeegee greens after heavy rain during tournaments to get players back on the course quickly
- Removes standing water in low areas due to rain or broken sprinkler heads
- Smooths green surface after aerifying or top dressing; ironing will maintain smoothness, trueness and putting speed
- Puts dew into greens for water conservation
- Irons rough areas on tees, range and fairways
- Allows for increased mowing heights during stressful parts of summer
- Decreases and eliminates the need for double cutting

Wood Bay Enterprises

Circle 221 on reader service form



TerraRoller dual-purpose roller/spiker

- Uses three gang rollers alone to speed up greens
- Integrated spiker can be lowered to help greens breathe and speed water absorption with almost no surface disruption
- Hydraulic lift provides easy operation and ample ground clearance during transport

Broyhill

Circle 222 on reader service form

SR72 roll 'n' spike golf and sports field roller

- Features the patented triple offset smoothing roller configuration
- Trues the surface by design, not weight
- Ideal for all golf courses
- Reduces ankle and knee injuries
- Three-point linkage, set-up, cat 2 or 3 fittings
- Minimum 50-hp tractor required
- Spiker has three depth settings: 1 inch, 1½ inches and 2¼ inches
- Spikers set apart 1½ inches
- 72-inch roll width
- Weighs 1,650 pounds - extra weight can be added
- Can roll and spike at high speed

True-Turf Equipment

Circle 223 on reader service form



KTR 30 turf roller

- Walk behind with traction drum and rounded edges
- Gentle on turf
- Maneuvers around tight spaces
- Handle folds for easy storage
- Water-filled 30-inch-wide roller
- Heavy-duty design
- Fingertip controls for speed, forward, reverse and on/off
- Hydrostatic drive
- 5.5 hp Honda engine

Kesmac

Circle 224 on reader service form



Groundhog roller frame design

- Available in 45-inch, 60-inch, 75-inch, and 90-inch widths
- Pull-type or three-point hitch tractor mounted; 12-foot and 15-foot pull-type
- Any frame can be fitted with any of the AerWay family of tines
- New designs can be fitted with an adjustable height smoothing roller
- Roller can be varied through over 10-inch of lift in ½-inch increments, which allows user to fine tune maintenance program from roller use exclusively, to venting aeration at various tine penetration depths, to tine openings without rolling
- Possible to roll and/or aerate 18 fairways in one day

AerWay

Circle 225 on reader service form



SitePro 2.0 central control system

- Ability to manage irrigation demand automatically to meet available pump station capacity
- Can determine changes of pump-station volume and recalculate irrigation based on a predetermined set of rules established by the user
- Ability to model different irrigation solutions to anticipate outcome
- Reporting features provide details on any problems that occurred, as well as confirmation of what areas were irrigated
- Saves hours of work required to recharge an irrigation system after downtime
- Allows the integration of multiple pump stations and offers the ability to disable integration and/or responses

The Toro Co.

Circle 226 on reader service form



200RSDB200 professional 2-inch valve

- Manually operated
- Solid brass construction
- 300 Series stainless steel components
- Pressure activated seals on each bell
- Newly designed one-piece top bonnet with new O-ring seal that eliminates leakage
- Accepts current commercial pipe restraints
- Solid brass cross handle (can be ordered with wheel handle); both handles can be used with model 30-30, 30-6 sprinkler keys
- Weighs 10 pounds, 11.9-inches high, 7.1-inches wide
- Eliminates need for thrust blocks

Champion Irrigation Products

Circle 227 on reader service form

PAR+ES decoder controller

- Ability to program and control decoders from a satellite interface
- Combines features and benefits of a controller system with those of a decoder system, resulting in an easier and less costly installation
- Offers the opportunity for easier expansions as the course's irrigation system changes
- Can be used in stand alone mode or with a company's central control system through a two-wire or wireless interface
- As many as 72 decoder addresses and two valves per address can be added
- Can operate 16 valves or solenoids simultaneously
- Provides three troubleshooting tests to facilitate maintenance of the decoder installation, plus four two-wire decoder line outputs each with its own on/off switch.
- Addition of new decoders to wire paths results in lower labor and material costs

Rain Bird Corp.'s Golf Division

Circle 228 on reader service form

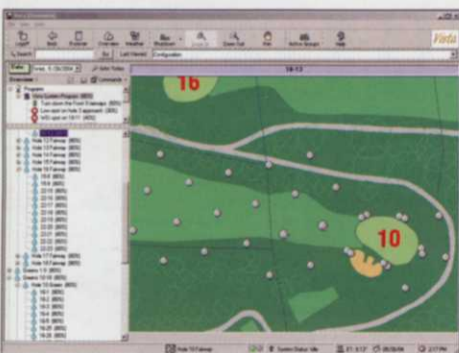


FloMax variable frequency drive pump station

- Designed for indoor installation
- Offers flow rates from 200 to 1,200 gpm at pressures from 50 to 150 psi
- Optional skid-mounted aluminum and steel enclosure makes

Flowtronex

Circle 229 on reader service form



Vista visual central control system

- Uses AutoCAD design coupled with GPS technology
- Automatically creates base irrigation program, saving time and money
- Optimizes pump efficiency and minimizes watering window automatically
- Monitors and senses problems in the field, then reacts in real-time, making programming and flow balancing adjustments on-the-fly
- Can see vital statistics with mouse clicks down to the individual rotor level
- Can save water while preventing plant disease and enhancing playability
- Flexibility to offset troublesome or unique areas for special treatment
- Automatic scheduling and balancing from start or end of water window
- Set-and-forget irrigation therapy handles temporary situations, then returns to normal

Hunter Industries

Circle 230 on reader service form



Brush chipper

- Model 65 features 6-inch-diameter capacity disc style
- 12-inch-wide chipper opening
- Hydraulic, right-angle feed
- Low profile, slanted infeed tray
- Infeed hopper is 25 inches off the ground
- Hinged feed wheel closes to within 5½ inches of chipper disc
- Reversible control bar at infeed with forward, reverse and stop
- 24-cubic-inch, 1,500 psi motor that pulls and crushes material

Bandit Industries

Circle 231 on reader service form



Bushmaster PTO-driven chipper

- Variable speed power feed 70 fpm or 45 fpm
- Drum-style chipping wheel
- Continuous chipping capacity as wide as 6 inches
- Power feed on/off control bar
- Heavy-duty shielded PTO shaft
- Built-in, high-volume blower with optional 15-inch extension
- Two knives modified A8 tool steel
- Easy access to belts and chipper knives

Befco

Circle 232 on reader service form



Towable chipper

- Can handle branches as wide as 6 inches in diameter
- Live hydraulic feed system with a variable speed feed roller with instant reverse
- "Try again" feed system automatically retries feeding limbs three times
- 15-inch-diameter feed roller
- 13-inch-wide opening contains 10 knife blades for enhanced ease of feeding
- 360-degree-rotating, 6.7-inch discharge chute

Crary Bear Cat

Circle 233 on reader service form

"Call a Mouse to your House," be the "Home Town Exterminator," become a Truly Nolen Franchisee and say; "Nite, Nite Termite!"[®] and "Adios Cucaracha!"[®]



Offer Tru-Guard[®], Truly Care[®], Monitored Defense System[®]; Join the friendliest system and say, "We get the bugs out."[™]

New and established protected franchise territories **800-458-3664**
Usa.franchise@trulymail.net

Employment 800-282-4062

National Accounts 877-568-3868

3636 E. Speedway • Tucson, AZ 85716

GOLF COURSE NEWS

DRIVE YOUR SALES BY ADDING REPRINTS TO YOUR MARKETING CAMPAIGN.

Article Reprint Service
Call Annemarie Dunchack at 800-456-0707