

Distinguishing the levels of the Signature Program

By RON DODSON

Nothing in life stays the same. In fact, change is good, especially if it's based on reflection and review and helps us to move forward. At Audubon International, we are dedicated to reviewing our programs to ensure they are meeting the environmental education needs of our members and our environmental standards. In light of that, we thought we would take this opportunity to clarify the various levels of Audubon International's Signature Program.

We created the Audubon Cooperative Sanctuary Program (ACSP) in 1991 with support from the U.S. Golf Association. The ACSP was designed to educate golf course superintendents about environmental aspects of managing existing courses. As more people learned about the program, landowners and others wanted to know how we could help them during the planning stages of developing new courses. So in 1993 Audubon International launched a program called the Audubon Signature Cooperative Sanctu-

Ron Dodson is president of Audubon International headquartered in Selkirk, N.Y.

ary Program.

THE SIGNATURE PROGRAM

The Audubon Signature Program provides environmental planning assistance to landowners with projects in the design and development stages. Audubon International staff works with owners, architects, consultants, project managers and superintendents from the design stages through construction and helps them develop strategies to address environmental issues of a proposed development.

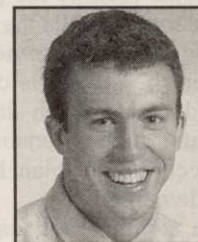
The Signature Program focuses on wildlife habitat management, waste reduction and management, energy efficiency, water conservation and water-quality management, as well as environmental issues relative to building and maintaining the maintenance facility. The goal of the Signature Program is to develop an environmental approach for planning and maintaining proposed developments that cause them to be environmentally and economically sustainable.

THE BRONZE SIGNATURE DESIGNATION

In the basic Signature Program, the landowner or developer, with the assistance of project consultants, conducts a comprehensive site assessment and de-

Overbeck moves up to managing editor

YARMOUTH, Maine — Along with other changes in the editorial offices of *Golf Course News*, associate editor Andrew Overbeck has been promoted to managing editor, succeeding Peter Blais, who is leaving to pursue a career in public relations.



Andrew Overbeck

Overbeck joined *GCN* as an international correspondent shortly after graduating from Earlham College in Richmond, Ind. in 1997. He covered the collapse of the Asian economy and golf course industry while on a yearlong Thomas J. Watson Fellowship studying the economic, social and environmental impact of golf course development in Southeast Asia.

"Spending time in China, the Philippines, Vietnam, Thailand, Singapore, Malaysia and Japan was not only a great learning experience and introduction to the golf course industry," said Overbeck. "But it also gave me the opportunity to compare Asian and American development strategies. I also got to play a lot of golf."

Overbeck returned stateside in August 1998 and continued to contribute to *GCN* while working for two of United Publication's other business newspapers. He became associate editor of *GCN* in June 1999.

As managing editor, Overbeck will continue to cover international business and golf course development as well as the supplier business and new product beats.

velops a Natural Resource Management Plan that serves as a guidance document for everyone who is involved in developing and constructing the project and for those who will manage the property after it is developed. Although we have refined the process and requirements of the Signature Program over the years, the Natural Resource Management Plan still forms its foundation, and members who suc-

cessfully complete and implement the plan and all of the requirements of the program are eligible to receive the Bronze Signature designation.

The Natural Resource Management Plan includes strategies for the planning, construction and management of a project consistent with Audubon International's environmental standards. Audubon Inter-

Continued on page 10

WATERTRONICS®

ELECTRONICALLY CONTROLLED PUMPING SYSTEMS

Time Tested Quality Assured

Over 25 years of pump station manufacturing experience.

At Watertronics, all of our pumping stations are custom designed for each individual application. Every station is factory tested before shipment at actual operating flow and pressure. Watertronics is the industry leader in other innovations including:

- Patented (E)lectronic (B)utterfly (V)alve pressure regulation for constant speed stations
- (V)ariable (F)requency (D)rive regulated pump stations with EBV backup in case of VFD failure
- Touchscreen operator interface
- Watervision® remote monitoring software
- Pumplink™ central irrigation control interface
- U.L. complete pump station registration
- Self contained, enclosed sports turf and golf course pump stations.

Make an informed decision! Call today and learn how a Watertronics proven system can accommodate all of your irrigation pumping needs.

Call us at: 800-356-6686 • Fax: 262-367-5551 • Or visit our website at: www.watertronics.com